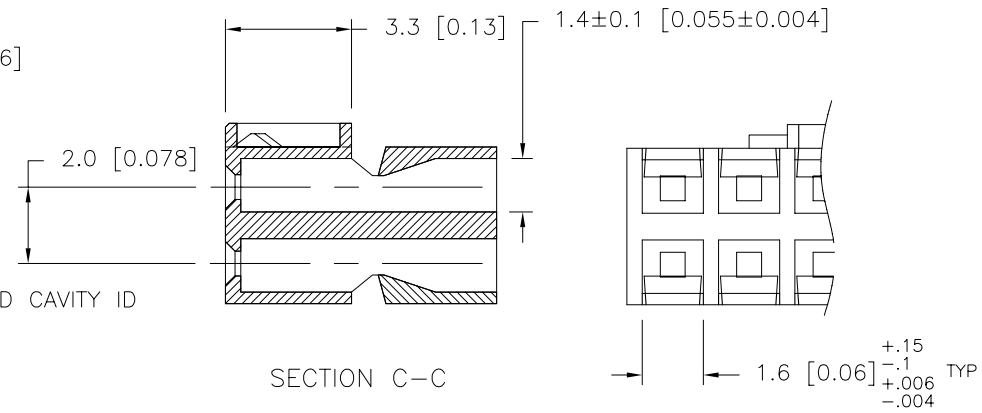
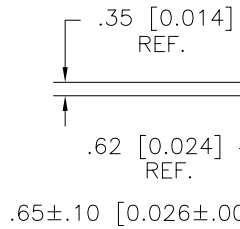
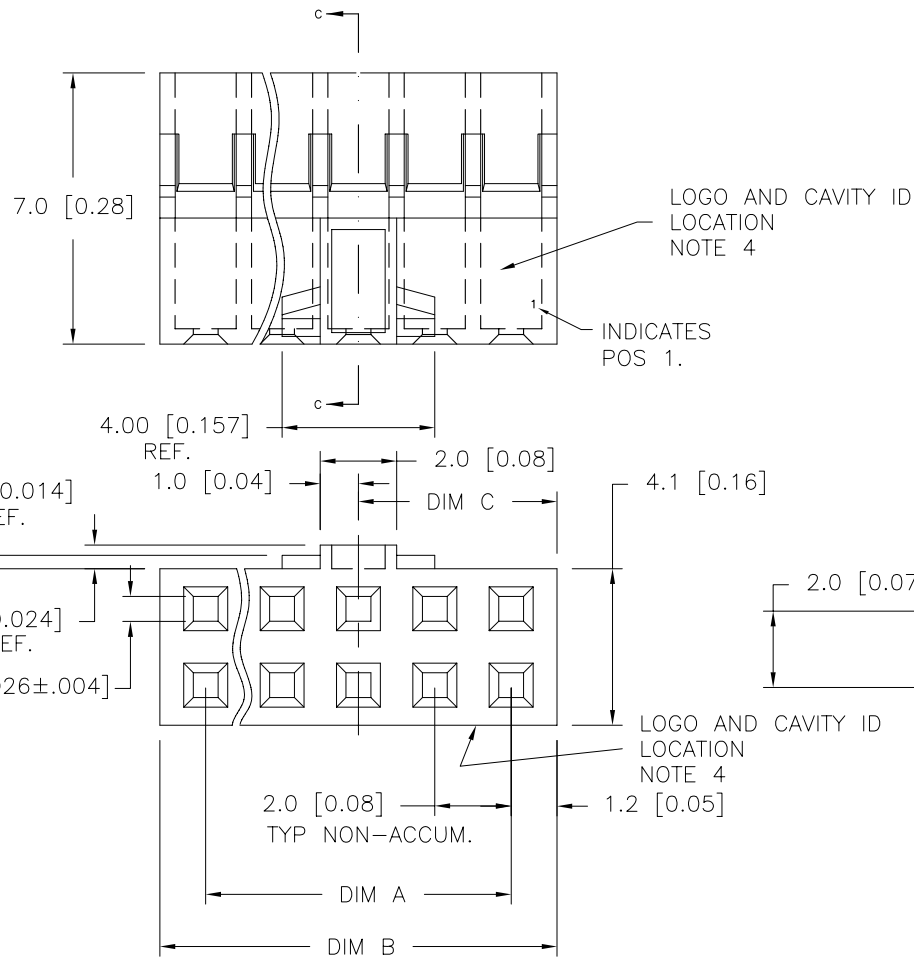


PRODUCT NUMBER
SEE TABLE



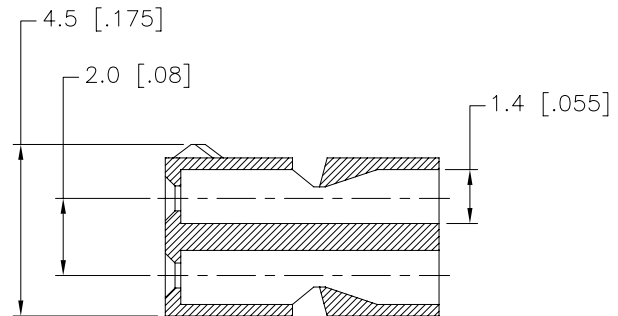
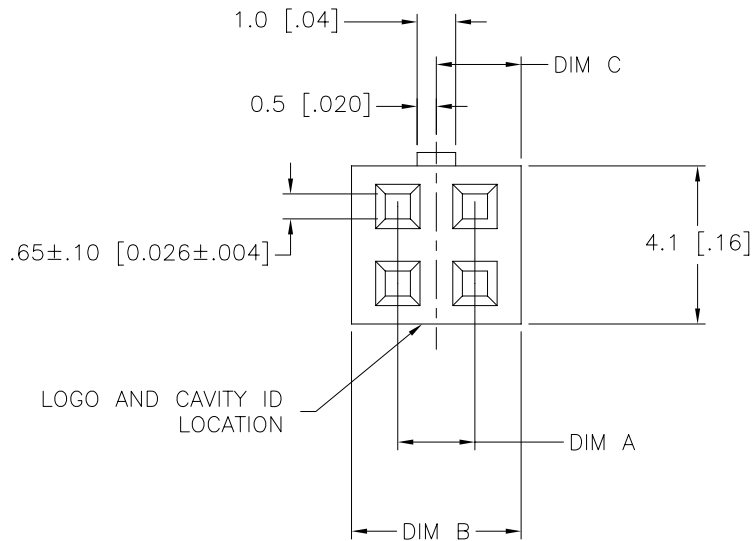
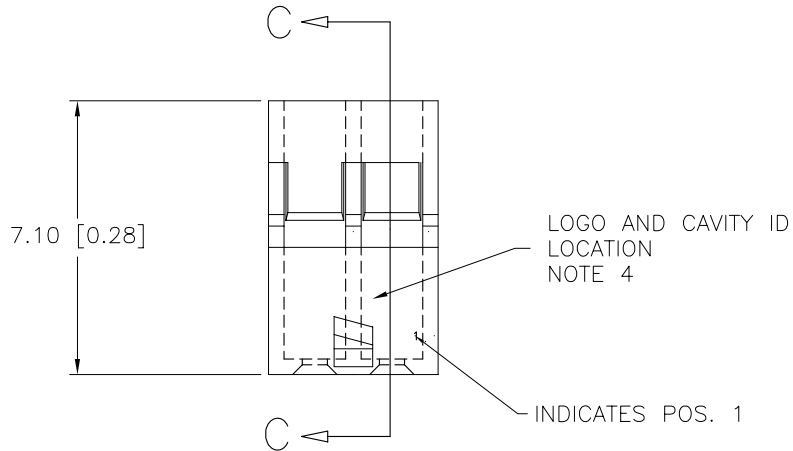
Copyright FCJ

mat'l. code SEE NOTE 1				surface <input checked="" type="checkbox"/> tolerance		projection		product family MINITEK HOUSINGS	
ltr	ecr no	dr	date	tolerances unless otherwise specified		title		MINITEK C.T.W. HOUSING DOUBLE ROW	
A	v08-0103	HTB	2008-02-29	angles	linear	MM/INCH		POLARIZED WITH LATCH, HIGH-TEMP	
B	v08-0393	HTB	2008-09-12	0°±2'	xxx+051/xxxx+0020	scale 5:1		dwg no 10087010 sheet 1 of 3 size A3	
				dr	T. BREWBAKER	2008-02-29		type Product Customer Drawing	
				engr	T. BREWBAKER	2008-02-29			
				chr	T. BREWBAKER	2008-02-29			
				appd	T. BREWBAKER	2008-02-29			
sheet index	revision sheet	B	B	B					
		1	2	3					

PRODUCT NUMBER

10087010-004LF

SEE NOTE 2




mat'l. code SEE NOTE 1				surface <input checked="" type="checkbox"/> tolerance		projection		product family MINITEK HOUSINGS	
tolerances unless otherwise specified				linear		MM/INCH		title	
B				.X+3/XX+.01		5:1		MINITEK C.T.W. HOUSING DOUBLE ROW POLARIZED WITH LATCH, HIGH-TEMP	
				XX+13/XXX+.005				dwg no 10087010	
				XXX+.051/XXXX+.0020				sheet 2 of 3 size A3	
				0°±2'				type Product Customer Drawing	
sheet index		revision sheet		dr T. BREWBAKER 2008-02-29		FCJ			
				enrg T. BREWBAKER 2008-02-29					
				chr T. BREWBAKER 2008-02-29					
				appd T. BREWBAKER 2008-02-29					

PRODUCT NUMBER	POS.	DIM A	DIM B	DIM C	LATCHING FEATURES	EQUIVALENT STANDARD P/N
10087010-004LF	2 x 2	2.0/.08	4.4/.17	2.2/.09	1 (SHEET 2)	90311-004LF
10087010-006LF	2 x 3	4.0/.16	6.4/.25	3.2/.13	2 (SHEET 1)	90311-006LF
10087010-008LF	2 x 4	6.0/.24	8.4/.33	4.2/.17	2 (SHEET 1)	90311-008LF
10087010-010LF	2 x 5	8.0/.32	10.4/.41	5.2/.21	2 (SHEET 1)	90311-010LF
10087010-012LF	2 x 6	10.0/.39	12.4/.49	6.2/.24	2 (SHEET 1)	90311-012LF
10087010-014LF	2 x 7	12.0/.47	14.4/.57	7.2/.28	2 (SHEET 1)	90311-014LF
10087010-016LF	2 x 8	14.0/.55	16.4/.65	8.2/.32	2 (SHEET 1)	90311-016LF
10087010-018LF	2 x 9	16.0/.63	18.4/.72	9.2/.36	2 (SHEET 1)	90311-018LF
10087010-020LF	2 x 10	18.0/.71	20.4/.80	10.2/.40	2 (SHEET 1)	90311-020LF
10087010-022LF	2 x 11	20.0/.79	22.4/.88	11.2/.44	2 (SHEET 1)	90311-022LF
10087010-024LF	2 x 12	22.0/.87	24.4/.96	12.2/.48	2 (SHEET 1)	90311-024LF
10087010-026LF	2 x 13	24.0/.95	26.4/1.04	13.2/.52	2 (SHEET 1)	90311-026LF
10087010-028LF	2 x 14	26.0/1.02	28.4/1.12	14.2/.56	2 (SHEET 1)	90311-028LF
10087010-030LF	2 x 15	28.0/1.10	30.4/1.20	15.2/.60	2 (SHEET 1)	90311-030LF
10087010-032LF	2 x 16	30.0/1.18	32.4/1.28	16.2/.64	2 (SHEET 1)	90311-032LF
10087010-034LF	2 x 17	32.0/1.26	34.4/1.35	17.2/.68	2 (SHEET 1)	90311-034LF
10087010-036LF	2 x 18	34.0/1.34	36.4/1.43	18.2/.72	2 (SHEET 1)	90311-036LF
10087010-038LF	2 x 19	36.0/1.42	38.4/1.51	19.2/.76	2 (SHEET 1)	90311-038LF
10087010-040LF	2 x 20	38.0/1.50	40.4/1.59	20.2/.80	2 (SHEET 1)	90311-040LF
10087010-042LF	2 x 21	40.0/1.58	42.4/1.67	21.2/.83	2 (SHEET 1)	90311-042LF
10087010-044LF	2 x 22	42.0/1.65	44.4/1.75	22.2/.87	2 (SHEET 1)	90311-044LF
10087010-046LF	2 x 23	44.0/1.73	46.4/1.83	23.2/.91	2 (SHEET 1)	90311-046LF
10087010-048LF	2 x 24	46.0/1.81	48.4/1.91	24.2/.95	2 (SHEET 1)	90311-048LF
10087010-050LF	2 x 25	48.0/1.89	50.4/1.98	25.2/.99	2 (SHEET 1)	90311-050LF

NOTE:

- ① MATERIAL: UNFILLED FLAME RETARDANT NYLON, FLAME RETARDANT PER UL94V-0, COLOR: BLACK
OPERATING TEMPERATURE: -40°C TO +130°C
- ② SHEET 2 SHOWS THE SINGULAR LATCHING FEATURE CONFINED TO THE 2 X 2.
3. FOR USE WITH MINITEK LATCHING HEADERS WHEN MATING AND UNMATING THE FORCES WILL BE APPROX. 2.2LBS/1Kg GREATER THAN THE FORCES DETAILED IN 110-036, PAR. 3.5.3.5
- ④ LOGO AND CAVITY ID LOCATION ARE TO BE DETERMINED BY MANUFACTURER.
5. PRODUCT MEETS EUROPEAN UNION DIRECTIVES AND OTHER COUNTRY REGULATIONS AS DESCRIBED IN GS-22-008.
6. THIS PRODUCT IS NOT INTENDED TO BE EXPOSED TO MANUFACTURING SOLDER PROCESSES.

mat'l. code SEE NOTE 1				surface <input checked="" type="checkbox"/> tolerance		projection 		product family MINITEK HOUSINGS	
ltr	ecrn no	dr	date	tolerances unless otherwise specified		MM/INCH		title	
B				angles	linear	X*3/XX*01 XX*13/XXX*005 XXX*051/XXXX*0020		MINITEK C.T.W. HOUSING DOUBLE ROW POLARIZED WITH LATCH, HIGH-TEMP	
				0°±2'		scale 5:1		dwg no 10087010	
				dr	T. BREWBAKER	2008-02-29		sheet 3 of 3 size A3	
				engr	T. BREWBAKER	2008-02-29		type Product Customer Drawing	
				chr	T. BREWBAKER	2008-02-29			
				appd	T. BREWBAKER	2008-02-29			
sheet index	revision sheet								



Copyright FCI