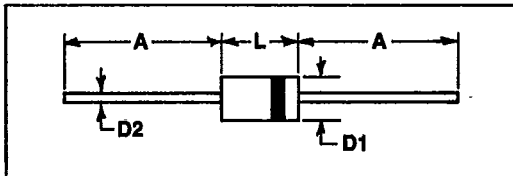


General Purpose Plastic Silicon Rectifiers

- Axial lead
- Low cost, reliable construction
- Low leakage
- Underwriters Laboratories flammability classification 94V-O
- Excellent thermal characteristics
- Applications include Linear and Switching Power Supplies, Audio Equipment, Instrumentation and Industrial Equipment

Case Dimensions



Case	Inch	A	L	D1	D2
DO-41	Min.	1.00	0.166	0.10	0.028
	Max.		0.205	0.11	0.034
DO-27A	Min.	1.00	0.285	0.190	0.048
	Max.		0.375	0.210	0.052
PX-64	Min.	1.00	0.34	0.34	0.048
	Max.		0.36	0.36	0.052

Operating and Storage Temperature -65°C to +175°C

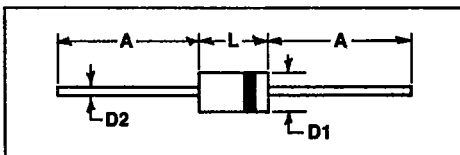
Ampere	Case	Type	PRV Vpk	Max Avg* Rectified Current @Half-Wave R or L Load 60Hz		Peak Forward Surge Current 1~60Hz Ifm Apk	Max Rev Current @PRV @25°C		Max Forward Voltage @25°C		Typical Junction Cap. pF
				Io	Ta		Ir	Vfm	Ifm		
				Aav	°C		μAdc	Vpk	Apk		
1.0	DO-41	1N4001	50	1.0	75	50	5.0	1.1	1.0	20	
		1N4002	100								
		1N4003	200								
		1N4004	400								
		1N4005	600								
		1N4006	800								
1N4007	1000										
1.5	DO-41	1N5391	50	1.5	50	50	5.0	1.1	1.5	30	
		1N5392	100								
		1N5393	200								
		1N5394	300								
		1N5395	400								
		1N5396	500								
1N5397	600										
1N5398	800										
1N5399	1000										
3.0	DO-27A	1N5400	50	3.0	55	200	10	1.0	3.0	70	
		1N5401	100								
		1N5402	200								
		1N5403	300								
		1N5404	400								
		1N5405	500								
1N5406	600										
1N5407	800										
1N5408	1000										
6.0	PX-64	ICC6401	50	6.0	55	400	25	1.0	6.0	100	
		ICC6402	100								
		ICC6403	200								
		ICC6404	400								
		ICC6405	600								
		ICC6406	800								
ICC6407	1000										

*Derate 20% for Capacitive Load

Fast Recovery Plastic Silicon Rectifiers

- Ideal for P.C. board use
- Low cost, reliable molded plastic construction
- Underwriters Laboratories flammability classification 94V-O
- Exceeds environment standards
- For Switching Power Supplies, Instrumentation and Industrial Applications

Case Dimensions



Case	Inch	A	L	D1	D2
DO-41	Min.	1.00	0.166	0.10	0.028
	Max.		0.205	0.11	0.034
DO-27A	Min.	1.00	0.285	0.190	0.048
	Max.		0.375	0.210	0.052
PX-64	Min.	1.00	0.34	0.34	0.048
	Max.		0.36	0.36	0.052

Operating and Storage Temperature -65°C to +175°C

Ampere	Case	Type	PRV Vpk	Max Avg* Rectified Current @Half-Wave R or L Load 60Hz		Peak Forward Surge Current 1~60Hz Ifm Apk	Max Rev Current @PRV @25°C		Max Forward Voltage @25°C		Typical Junction Cap. pF	Max Rev Recovery Time ns
				Io	Ta		Ir	Vfm	Ifm			
				Aav	°C		μAdc	Vpk	Apk			
1.0	DO-41	ICR1001	50	1.0	75	50	5.0	1.1	1.0	20	150	
		ICR1002	100									
		ICR1003	200									
		ICR1004	400									
		ICR1005	600									
		ICR1006	800									
ICR1007	1000											
1.0	DO-41	1N4933	50	1.0	75	30	5.0	1.2	1.0	20	200	
		1N4934	100									
		1N4935	200									
		1N4936	400									
		1N4937	600									
			800									
	1000											
1.5	DO-41	ICR1501	50	1.5	75	50	5.0	1.2	1.5	30	150	
		ICR1502	100									
		ICR1503	200									
		ICR1504	400									
		ICR1505	600									
		ICR1506	800									
ICR1507	1000											
3.0	DO-27A	ICR3001	50	3.0	105	200	10	1.1	3.0	70	150	
		ICR3002	100									
		ICR3003	200									
		ICR3004	400									
		ICR3005	600									
		ICR3006	800									
ICR3007	1000											
6.0	PX-64	ICR6001	50	6.0	60	400	25	1.1	6.0	100	150	
		ICR6002	100									
		ICR6003	200									
		ICR6004	400									
		ICR6005	600									
		ICR6006	800									
ICR6007	1000											

*Derate 20% for Capacitive Load