

F

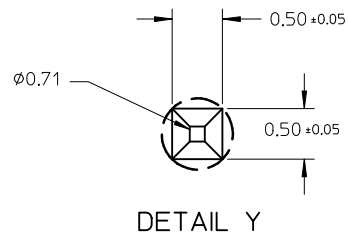
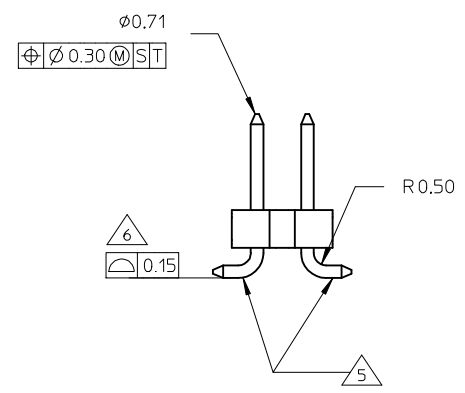
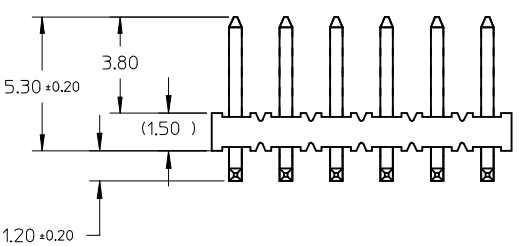
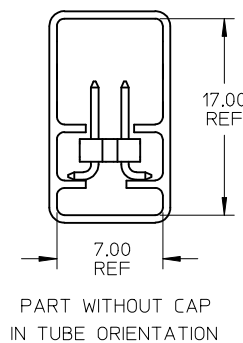
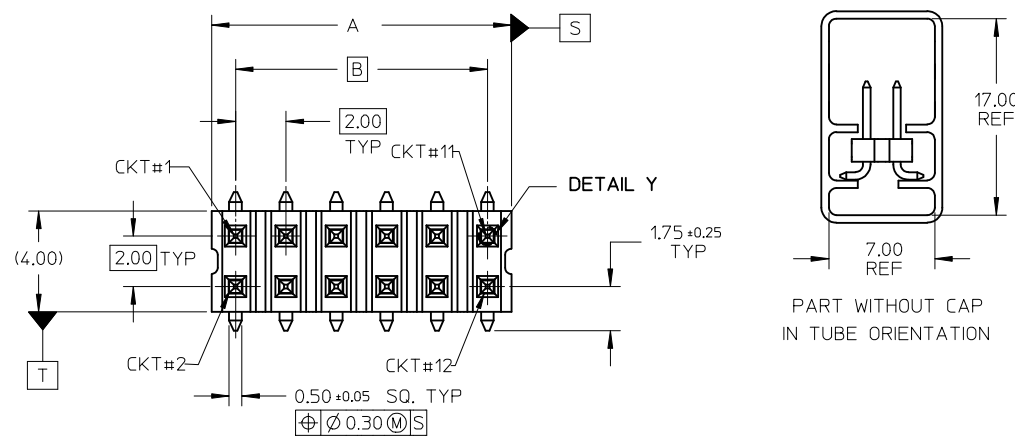
E

D

C

B

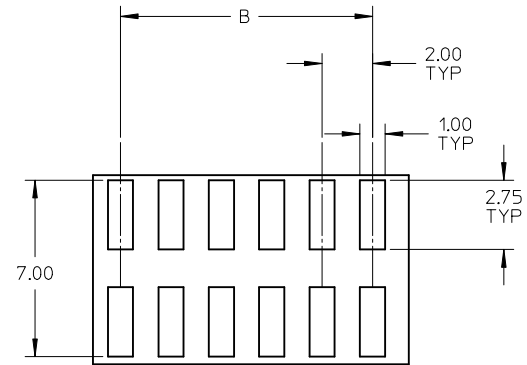
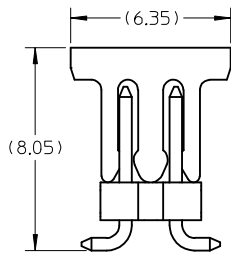
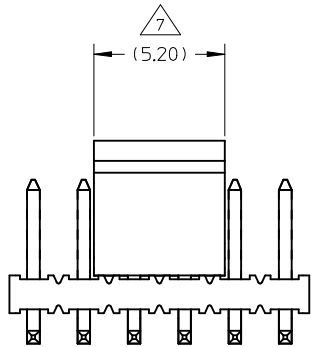
A



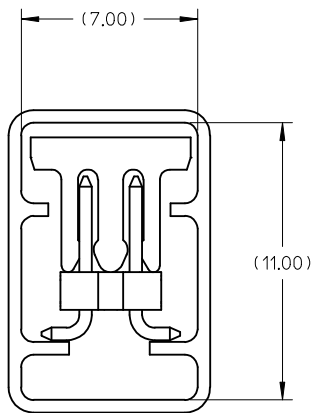
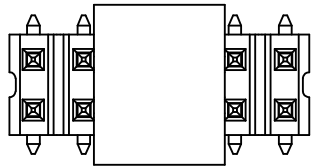
NOTE:

1. MATERIAL:
HSG & CAP - NYLON, GLASS FILLED
UL 94V-0, COLOUR BLACK
- PIN - 0.50 SQ PHOSPHOR BRONZE
2. PLATING OPTION:
 - (1) 0.76um MIN GOLD PLATE AT CONTACT AREA,
TIN PLATE AT SOLDER AREA,
BOTH OVER NICKEL UNDERPLATE
 - (2) 0.38um MIN GOLD PLATE AT CONTACT AREA,
TIN PLATE AT SOLDER AREA,
BOTH OVER NICKEL UNDERPLATE
 - (3) 0.05 - 0.25um GOLD PLATE AT CONTACT AREA,
TIN PLATE AT SOLDER AREA,
BOTH OVER NICKEL UNDERPLATE
3. PIN PUSHOUT FORCE: 1KG MIN IN EITHER DIRECTION
4. PRODUCT SPEC PS-87761-100 APPLIES.
- 5 BEND DEPRESSION IS ACCEPTABLE SO LONG AS IT DOES NOT AFFECT THE OVERALL COPLANARITY OF TAIL.
- 6 COPLANARITY IS TO BE MEASURED BY RESTING THE SOLDER TAIL ON A FLAT SURFACE.
- 7 CAP TO BE LOCATED AS CENTRAL OF PART AS POSSIBLE
TOP SURFACE OF CAP TO BE FLAT FOR THE PURPOSE OF PICK & PLACE BY VACUUM SUCTION NOZZLE.
8. FOR ILLUSTRATION PURPOSES, 12CKT IS SHOWN.
- 9 CKT 4 & 6 IS CUT FROM CKT 8 & 12 RESPECTIVELY
ROUGH EDGES ARE EXPECTED ALONG THE CUTTING EDGES.
10. PACKAGING SPECIFICATION:
 - FOR TRAY: PK-89990-487
 - FOR TUBE: PK-89990-476/ PK-89990-474/ PK-89990-475
 - FOR T&R: PK-89990-484/ 485

| | | | | | | | | |
|--|-------------------------------|---------------------------------------|---------|---|--------------------|---|------------------------------|---------------------|
| CORRECT -04/14/5 PK EC NO: S2018-0096 DRWN:FC500 CHKD:CGOH APPR:KLL JM 2017/08/31 2017/10/01 2017/10/02 | QUALITY SYMBOLS ▽=0 ◻=0 | GENERAL TOLERANCES (UNLESS SPECIFIED) | | DIMENSION STYLE MM ONLY | SCALE NTS | DESIGN UNITS METRIC | THIRD ANGLE PROJECTION | |
| | | 4 PLACES ± --- ± --- | mm INCH | DRAWN BY KSEE | DATE 2003/12/12 | TITLE CUSTOM HEADER MGRID, 2MM DUAL ROW HDR. SMT | | |
| | | 3 PLACES ± --- ± --- | | CHECKED BY KCL ING | DATE 2004/01/12 | MOLEX INCORPORATED | | |
| | | 2 PLACES ± 0.2 ± --- | | APPROVED BY SKTOH | DATE 2004/01/12 | MATERIAL NO. SEE TABLE | DOCUMENT NO. SD-87759-117 | SHEET NO. 1 OF 8 |
| 1 PLACE ± --- ± --- | | ANGULAR ± 3 ° | | THIS DRAWING CONTAINS INFORMATION THAT IS PROPRIETARY TO MOLEX INCORPORATED AND SHOULD NOT BE USED WITHOUT WRITTEN PERMISSION | | | | |
| DRAFT WHERE APPLICABLE MUST REMAIN WITHIN DIMENSIONS | | | | | | | | |

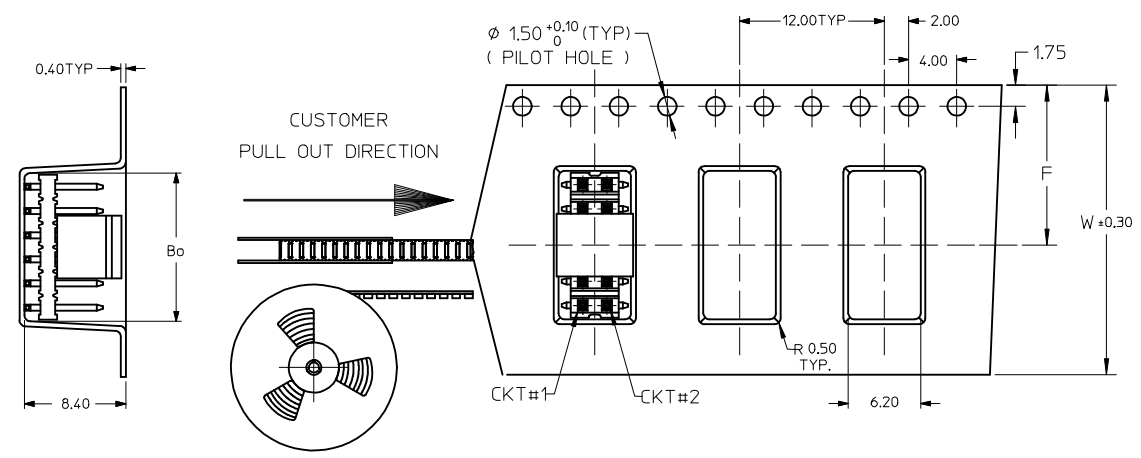


RECOMMENDED SOLDER PAD LAYOUT



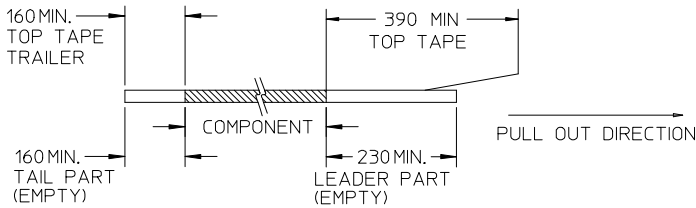
| | | | | | | | | | |
|---|-------------------------------|--|-------------------|----------------------------|---|------------------------|---|------------------------------|---------------------|
| CORRECT -04/14/5 PK EC NO: S2018-0096 DRWN:FC500 2017/08/31 CHKD:CGOH 2017/10/01 APPR:KLL JM 2017/10/02 | QUALITY SYMBOLS ▽=0 ◻=0 | GENERAL TOLERANCES (UNLESS SPECIFIED) | | DIMENSION STYLE MM ONLY | SCALE NTS | DESIGN UNITS METRIC | THIRD ANGLE PROJECTION | | |
| | | | mm | INCH | DRAWN BY KSEE | DATE 2003/12/12 | TITLE CUSTOM HEADER MGRID, 2MM DUAL ROW HDR. SMT | | |
| | | 4 PLACES | ± --- | ± --- | CHECKED BY KCL ING | DATE 2004/01/12 | MOLEX INCORPORATED | | |
| | | 3 PLACES | ± --- | ± --- | APPROVED BY SKTOH | DATE 2004/01/12 | MATERIAL NO. SEE TABLE | DOCUMENT NO. SD-87759-117 | SHEET NO. 2 OF 8 |
| | | | 2 PLACES ± 0.2 | ± --- | THIS DRAWING CONTAINS INFORMATION THAT IS PROPRIETARY TO MOLEX INCORPORATED AND SHOULD NOT BE USED WITHOUT WRITTEN PERMISSION | | | | |
| | | | 1 PLACE ± --- | ± --- | | | | | |
| | | | ANGULAR ± 3 ° | | | | | | |
| | | DRAFT WHERE APPLICABLE MUST REMAIN WITHIN DIMENSIONS | | | | | | | |
| B9 | REV | | | SIZE | | | | | |
| | | | | A3 | | | | | |

EMBOSSED CARRIER TAPE TYPE "A"

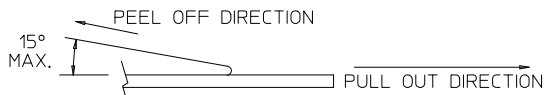


NOTES:

12. LEADER AND TRAILER TAPE



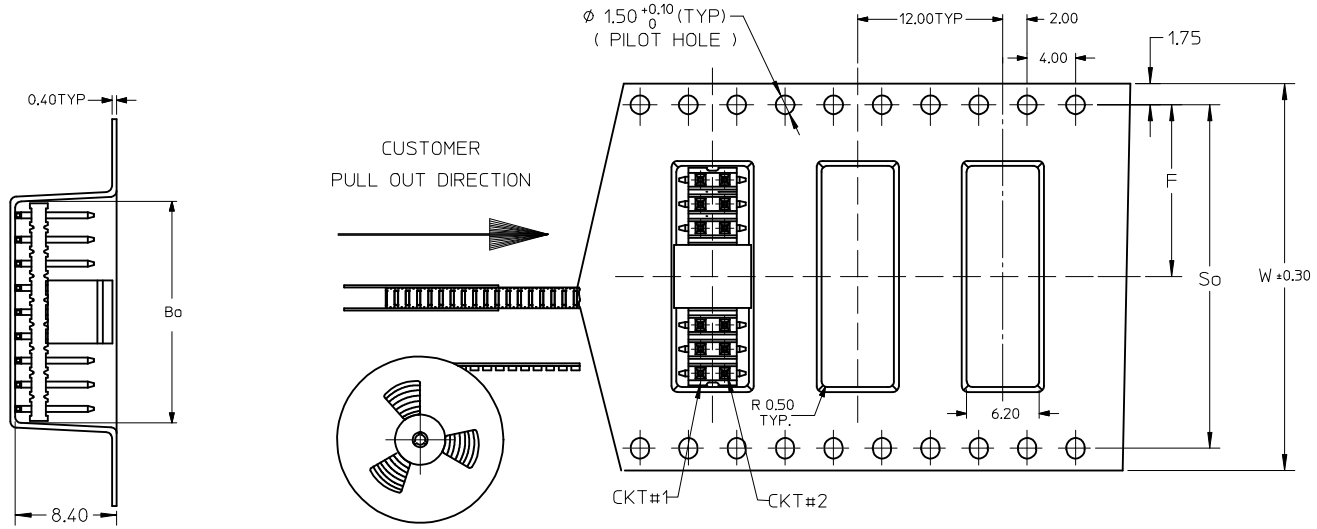
13. PEELING OFF FORCE OF THE TOP TAPE: 20-80gf.
(PEELING DIRECTION AS SHOWN IN FOLLOWING FIGURE)



- 14. PACKAGING STANDARD IS AS PER EIA-481.
- 15. TAPE & REEL QUANTITY = SEE TABLE
- 16. THE TAPE IS TREATED FOR ANTI-STATIC

| | | | | | | | | |
|---|-------------------|---|--|--|---|--------------|---|-------|
| CORRECT -04/14/5 PK EC NO: S2018-0096 DRWN: FCS00 CHKD: CG0H APPR: KHL IM 2017/08/31 2017/10/01 2017/10/02 | DESCRIPTION B9 | QUALITY SYMBOLS | GENERAL TOLERANCES (UNLESS SPECIFIED) | DIMENSION STYLE | SCALE | DESIGN UNITS | THIRD ANGLE PROJECTION | |
| | | $\nabla = 0$ $\sphericalangle = 0$ | mm INCH 4 PLACES ± --- ± --- 3 PLACES ± --- ± --- 2 PLACES ± 0.2 ± --- 1 PLACE ± --- ± --- ANGULAR ± 3 ° | MM ONLY | NTS | METRIC | DRAWN BY: KSEE DATE: 2003/12/12 CHECKED BY: DATE: 2004/01/12 APPROVED BY: SKTOH DATE: 2004/01/12 | TITLE |
| | | DRAFT WHERE APPLICABLE MUST REMAIN WITHIN DIMENSIONS | SEE TABLE | CUSTOM HEADER MGRID, 2MM DUAL ROW HDR. SMT | MOLEX INCORPORATED DOCUMENT NO. SD-87759-117 | SHEET NO. | | |
| | | THIS DRAWING CONTAINS INFORMATION THAT IS PROPRIETARY TO MOLEX INCORPORATED AND SHOULD NOT BE USED WITHOUT WRITTEN PERMISSION | | 3 OF 8 | | | | |

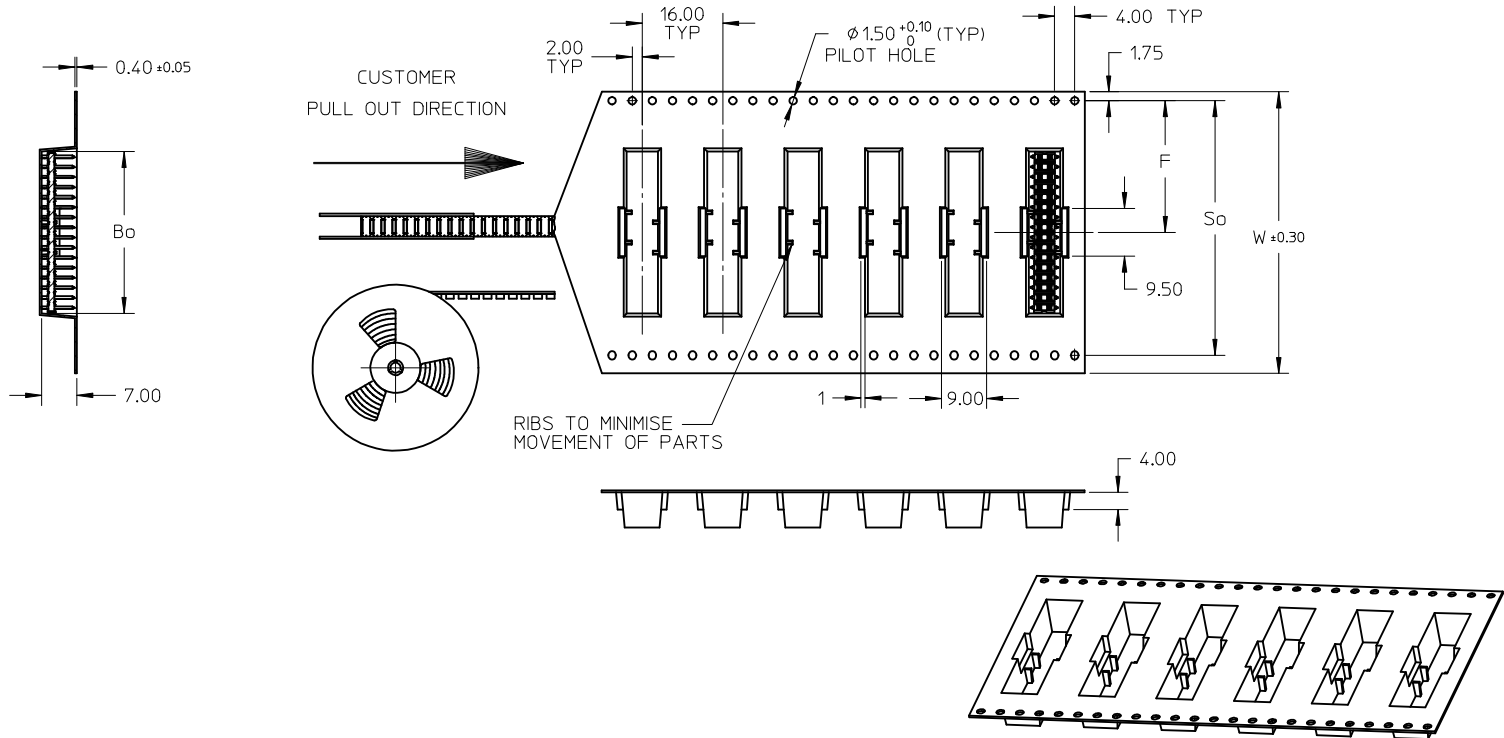
EMBOSSED CARRIER TAPE TYPE "B"



| | | | | | | |
|---|-----------------|---|---|--------------|--|------------------------|
| CORRECT -04/14/15 PK EC NO: S2018-0096 DRWN:FC500 CHKD:CGOH APPR:KLL JM 2017/08/31 2017/10/01 2017/10/02 | QUALITY SYMBOLS | GENERAL TOLERANCES (UNLESS SPECIFIED) | DIMENSION STYLE | SCALE | DESIGN UNITS | THIRD ANGLE PROJECTION |
| | ▼=0 □=0 | mm INCH 4 PLACES ± --- ± --- 3 PLACES ± --- ± --- 2 PLACES ± 0.2 ± --- 1 PLACE ± --- ± --- ANGULAR ± 3 ° | MM ONLY | NTS | METRIC | |
| | DESCRIPTION | DRAFT WHERE APPLICABLE MUST REMAIN WITHIN DIMENSIONS | DRAWN BY DATE KSEE 2003/12/12 CHECKED BY DATE KCL ING 2004/01/12 APPROVED BY DATE SKTOH 2004/01/12 | TITLE | CUSTOM HEADER MGRID, 2MM DUAL ROW HDR. SMT | |
| | REV | | SEE TABLE | MATERIAL NO. | DOCUMENT NO. | SHEET NO. |

MOLEX INCORPORATED
 SD-87759-117
 4 OF 8
 THIS DRAWING CONTAINS INFORMATION THAT IS PROPRIETARY TO MOLEX INCORPORATED AND SHOULD NOT BE USED WITHOUT WRITTEN PERMISSION

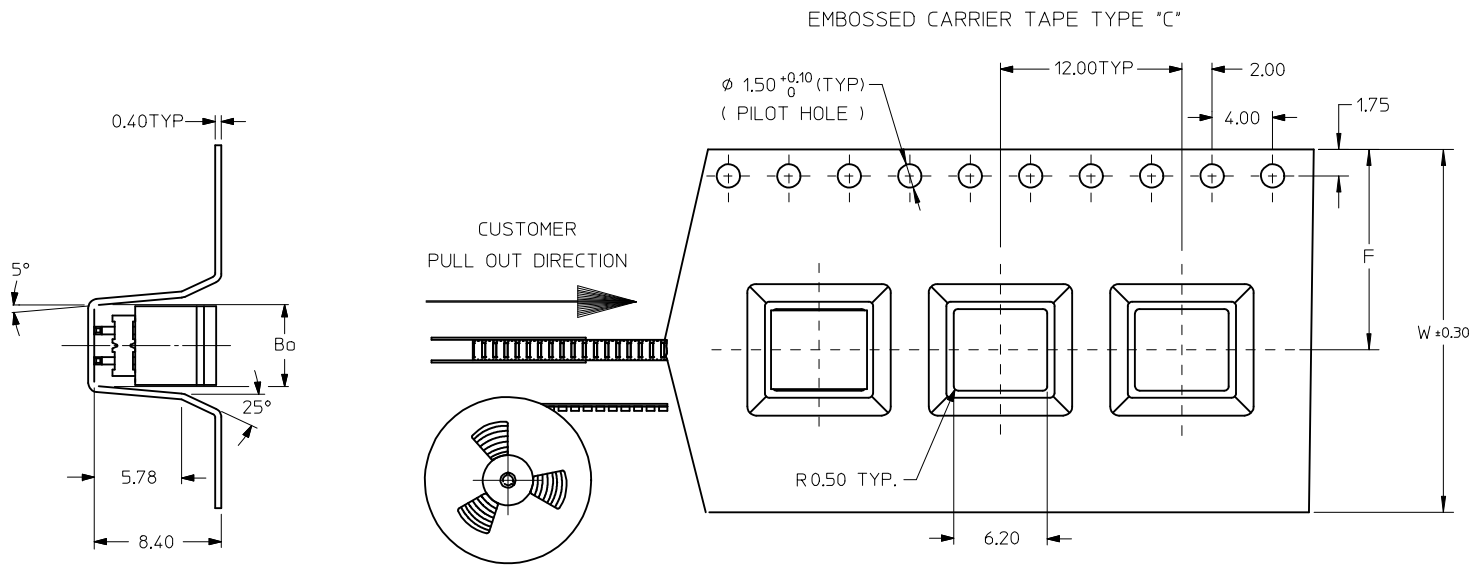
EMBOSSED CARRIER TAPE TYPE 'B1'



| | | | | | | | | | |
|---|---|---------------------------------------|--|----------------------------|--|--------------------|---|------------------------|--|
| CORRECT -0414/5 PK EC NO: S2018-0096 DRW: FCS00 CHKD: LGOH APPR: KHL IM 2017/08/31 2017/10/01 2017/10/02 | QUALITY SYMBOLS $\nabla_F = 0$ $\nabla_E = 0$ $\nabla_B = 0$ | GENERAL TOLERANCES (UNLESS SPECIFIED) | | DIMENSION STYLE MM ONLY | | SCALE NTS | DESIGN UNITS METRIC | THIRD ANGLE PROJECTION | |
| | | | mm | INCH | DRAWN BY KSEE | DATE 2003/12/12 | TITLE CUSTOM HEADER MGRID, 2MM DUAL ROW HDR. SMT | | |
| | | 4 PLACES | \pm --- | \pm --- | CHECKED BY KCLING | DATE 2004/01/12 | molex DOCUMENT NO. SD-87759-117 SHEET NO. 5 OF 8 | | |
| | | 3 PLACES | \pm --- | \pm --- | APPROVED BY SKTOH | DATE 2004/01/12 | | | |
| 2 PLACES | ± 0.2 | \pm --- | MATERIAL NO. SEE TABLE | | | | | | |
| 1 PLACE | \pm --- | \pm --- | DRAFT WHERE APPLICABLE MUST REMAIN WITHIN DIMENSIONS | | THIS DRAWING CONTAINS INFORMATION THAT IS PROPRIETARY TO MOLEX INCORPORATED AND SHOULD NOT BE USED WITHOUT WRITTEN PERMISSION | | | | |
| 0 PLACE | \pm | \pm | ANGULAR $\pm 3^\circ$ | | | | | | |

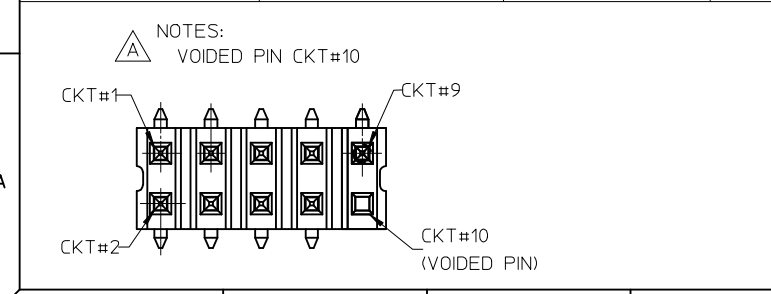
EMBOSSED CARRIER TAPE TYPE "C"

THIS TYPE OF CARRIER IS FOR CKT SIZE 8 AND BELOW.



| | | | | | | |
|---|--|--|---|--|---|---------------------|
| CORRECT -04/14/15 PK EC NO: S2018-0096 DRWN:FC500 CHKD:CGOH APPR:KHL JM 2017/08/31 2017/10/01 2017/10/02 | QUALITY SYMBOLS ▽=0 ◻=0 | GENERAL TOLERANCES (UNLESS SPECIFIED) mm INCH 4 PLACES ± --- ± --- 3 PLACES ± --- ± --- 2 PLACES ± 0.2 ± --- 1 PLACE ± --- ± --- ANGULAR ± 3 ° | DIMENSION STYLE MM ONLY DRAWN BY DATE KSEE 2003/12/12 CHECKED BY DATE KCL ING 2004/01/12 APPROVED BY DATE SKTOH 2004/01/12 MATERIAL NO. | SCALE NTS DESIGN UNITS METRIC THIRD ANGLE PROJECTION | TITLE CUSTOM HEADER MGRID, 2MM DUAL ROW HDR. SMT MOLEX INCORPORATED DOCUMENT NO. SD-87759-117 | SHEET NO. 6 OF 8 |
| | DRAFT WHERE APPLICABLE MUST REMAIN WITHIN DIMENSIONS | SIZE A3 THIS DRAWING CONTAINS INFORMATION THAT IS PROPRIETARY TO MOLEX INCORPORATED AND SHOULD NOT BE USED WITHOUT WRITTEN PERMISSION | | | | |
| | B9 | DESCRIPTION | | | | |
| | | | | | | |

| | 10 | 9 | 8 | 7 | 6 | 5 | 4 | 3 | 2 | 1 | | | | | | |
|---|---------------------------------|---------------------------------|------------------------------|--|---|----------------|-----------|-------|-------|-------|-------|-------|-------|---------------|-----------|----------------|
| | PART NUMBER WITHOUT CAP IN TRAY | PART NUMBER WITHOUT CAP IN TUBE | PART NUMBER WITH CAP IN TUBE | PART NUMBER WITH CAP IN TAPE AND REEL. | PART NUMBER WITHOUT CAP IN TAPE AND REEL. | CKT SIZE | VOID CKTS | A | B | Bo | F | So | W | EMBOSSED TYPE | QTY/ REEL | PLATING OPTION |
| F | 87759-0414 | - | 87759-0464 | 87759-0474 | - | 4 \triangle | -- | NA | 2.00 | 5.40 | 11.50 | - | 24.00 | C | 750 | 2 |
| | - | 87759-0614 | 87759-0664 | 87759-0674 | - | 6 \triangle | -- | NA | 4.00 | 7.20 | 11.50 | - | 24.00 | C | | |
| | - | 87759-0814 | 87759-0864 | 87759-0874 | - | 8 | -- | 7.90 | 6.00 | 8.20 | 11.50 | - | 24.00 | C | | |
| | - | 87759-1014 | 87759-1064 | 87759-1074 | - | 10 | -- | 9.90 | 8.00 | 10.20 | 11.50 | - | 24.00 | A | | |
| | - | 87759-1002 | 87759-1003 | 87759-1004 | - | 10 \triangle | -- | 9.90 | 8.00 | 10.20 | 11.50 | - | 24.00 | A | | |
| | - | 87759-1214 | 87759-1264 | 87759-1274 | - | 12 | -- | 11.90 | 10.00 | 12.20 | 11.50 | - | 24.00 | A | | |
| E | - | 87759-1414 | 87759-1464 | 87759-1474 | - | 14 | -- | 13.90 | 12.00 | 14.20 | 11.50 | - | 24.00 | A | | |
| | - | 87759-1614 | 87759-1664 | 87759-1674 | - | 16 | -- | 15.90 | 14.00 | 16.20 | 14.20 | 28.40 | 32.00 | B | | |
| | - | 87759-1814 | 87759-1864 | 87759-1874 | - | 18 | -- | 17.90 | 16.00 | 18.20 | 14.20 | 28.40 | 32.00 | B | | |
| | - | 87759-2014 | 87759-2064 | 87759-2074 | - | 20 | -- | 19.90 | 18.00 | 20.20 | 14.20 | 28.40 | 32.00 | B | | |
| D | - | 87759-2214 | 87759-2264 | 87759-2274 | - | 22 | -- | 21.90 | 20.00 | 22.20 | 20.20 | 40.40 | 44.00 | B | | |
| | - | 87759-2414 | 87759-2464 | 87759-2474 | - | 24 | -- | 23.90 | 22.00 | 24.20 | 20.20 | 40.40 | 44.00 | B | | |
| | - | 87759-2614 | 87759-2664 | 87759-2674 | - | 26 | -- | 25.90 | 24.00 | 26.20 | 20.20 | 40.40 | 44.00 | B | | |
| | - | 87759-2814 | 87759-2864 | 87759-2874 | - | 28 | -- | 27.90 | 26.00 | 28.20 | 20.20 | 40.40 | 44.00 | B | | |
| | - | 87759-3014 | 87759-3064 | 87759-3074 | - | 30 | -- | 29.90 | 28.00 | 30.20 | 20.20 | 40.40 | 44.00 | B | | |
| | - | 87759-3214 | 87759-3264 | 87759-3274 | - | 32 | -- | 31.90 | 30.00 | 32.20 | 20.20 | 40.40 | 56.00 | B | | |
| | - | 87759-3414 | 87759-3464 | 87759-3474 | - | 34 | -- | 33.90 | 32.00 | 34.20 | 26.20 | 52.40 | 56.00 | B | | |
| | - | 87759-3614 | 87759-3664 | 87759-3674 | - | 36 | -- | 35.90 | 34.00 | 36.20 | 26.20 | 52.40 | 56.00 | B | | |
| C | - | - | - | - | 87759-3679 | 36 | -- | 35.90 | 34.00 | 36.20 | 26.20 | 52.40 | 56.00 | B1 | 500 | |
| | - | 87759-3814 | 87759-3864 | 87759-3874 | - | 38 | -- | 37.90 | 36.00 | 38.20 | 26.20 | 52.40 | 56.00 | B | | |
| | - | 87759-4014 | 87759-4064 | 87759-4074 | - | 40 | -- | 39.90 | 38.00 | 40.20 | 26.20 | 52.40 | 56.00 | B | | |
| | - | 87759-4214 | 87759-4264 | 87759-4274 | - | 42 | -- | 41.90 | 40.00 | 42.20 | 26.20 | 52.40 | 56.00 | B | | |
| | - | 87759-4414 | 87759-4464 | 87759-4474 | - | 44 | -- | 43.90 | 42.00 | 44.20 | 26.20 | 52.40 | 56.00 | B | | |
| | - | 87759-4614 | 87759-4664 | 87759-4674 | - | 46 | -- | 45.90 | 44.00 | 46.20 | 26.20 | 52.40 | 56.00 | B | | |
| | - | 87759-4814 | 87759-4864 | 87759-4874 | - | 48 | -- | 47.90 | 46.00 | 48.20 | 26.20 | 52.40 | 56.00 | B | | |
| B | - | 87759-5014 | 87759-5064 | 87759-5074 | - | 50 | -- | 49.90 | 48.00 | 50.20 | 34.20 | 68.40 | 72.00 | B | | |
| | - | 87759-6814 | 87759-6864 | 87759-6874 | - | 8 | -- | 7.90 | 6.00 | 8.20 | 11.50 | - | 24.00 | C | 3 | |



CORRECT -0414/5 PK
 EC NO: S2018-0096
 DRWN:FCS00
 CHKD:CGOH
 APPR:KLL JM
 2017/08/31
 2017/10/01
 2017/10/02

QUALITY SYMBOLS
 $\nabla=0$
 $\triangle=0$

GENERAL TOLERANCES (UNLESS SPECIFIED)

| | mm | INCH |
|----------|-----------|-----------|
| 4 PLACES | \pm --- | \pm --- |
| 3 PLACES | \pm --- | \pm --- |
| 2 PLACES | \pm 0.2 | \pm --- |
| 1 PLACE | \pm --- | \pm --- |

ANGULAR \pm 3°

DRAFT WHERE APPLICABLE
 MUST REMAIN WITHIN DIMENSIONS

DIMENSION STYLE
MM ONLY

SCALE
NTS

DESIGN UNITS
METRIC

THIRD ANGLE PROJECTION

DRAWN BY: KSEE
 DATE: 2003/12/12

CHECKED BY: KCL ING
 DATE: 2004/01/12

APPROVED BY: SKTOH
 DATE: 2004/01/12

MATERIAL NO. SEE TABLE

SIZE: A3

TITLE
**CUSTOM HEADER
 MGRID, 2MM DUAL ROW HDR.
 SMT**

MOLEX INCORPORATED

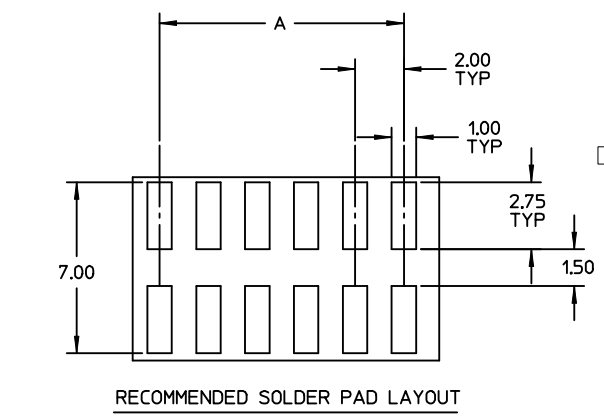
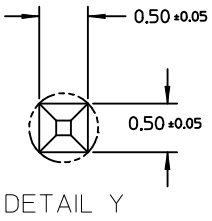
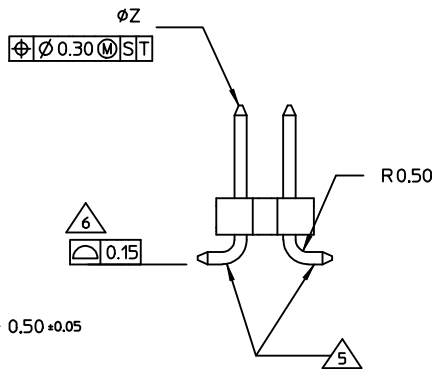
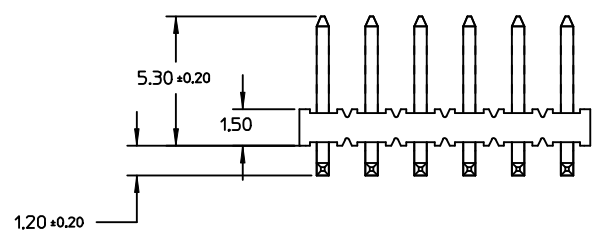
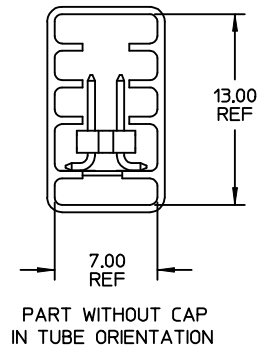
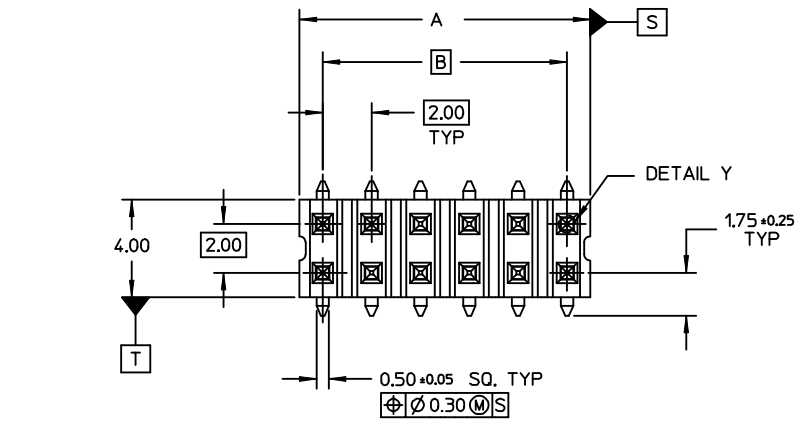
DOCUMENT NO. SD-87759-117

SHEET NO. 7 OF 8

THIS DRAWING CONTAINS INFORMATION THAT IS PROPRIETARY TO MOLEX INCORPORATED AND SHOULD NOT BE USED WITHOUT WRITTEN PERMISSION

| | 10 | 9 | 8 | 7 | 6 | 5 | 4 | 3 | 2 | 1 | | | | | | |
|---|---------------------------------|---------------------------------|------------------------------|--|---|-----------------|-----------|---------------|-------|-------|-------|-------|-------|---------------|-----------|----------------|
| | PART NUMBER WITHOUT CAP IN TRAY | PART NUMBER WITHOUT CAP IN TUBE | PART NUMBER WITH CAP IN TUBE | PART NUMBER WITH CAP IN TAPE AND REEL. | PART NUMBER WITHOUT CAP IN TAPE AND REEL. | CKT SIZE | VOID CKTS | A | B | Bo | F | So | W | EMBOSSED TYPE | QTY/ REEL | PLATING OPTION |
| F | 87759-0415 | -- | 87759-0465 | 87759-0475 | -- | 4 \triangle 9 | -- | 3.90 ±0.38 | 2.00 | 5.40 | 11.50 | - | 24.00 | C | 750 | 1 |
| | -- | 87759-0615 | 87759-0665 | 87759-0675 | -- | 6 \triangle 9 | -- | 5.90 ±0.38 | 4.00 | 7.20 | 11.50 | - | 24.00 | C | | |
| | -- | 87759-0815 | 87759-0865 | 87759-0875 | -- | 8 | -- | 7.90 | 6.00 | 8.20 | 11.50 | - | 24.00 | C | | |
| | -- | 87759-1015 | 87759-1065 | 87759-1075 | -- | 10 | -- | 9.90 | 8.00 | 10.20 | 11.50 | - | 24.00 | A | | |
| | -- | 87759-1215 | 87759-1265 | 87759-1275 | -- | 12 | -- | 11.90 | 10.00 | 12.20 | 11.50 | - | 24.00 | A | | |
| | -- | 87759-1415 | 87759-1465 | 87759-1475 | -- | 14 | -- | 13.90 | 12.00 | 14.20 | 11.50 | - | 24.00 | A | | |
| E | -- | 87759-1615 | 87759-1665 | 87759-1675 | -- | 16 | -- | 15.90 | 14.00 | 16.20 | 14.20 | 28.40 | 32.00 | B | | |
| | -- | 87759-1815 | 87759-1865 | 87759-1875 | -- | 18 | -- | 17.90 | 16.00 | 18.20 | 14.20 | 28.40 | 32.00 | B | | |
| | -- | 87759-2015 | 87759-2065 | 87759-2075 | -- | 20 | -- | 19.90 | 18.00 | 20.20 | 14.20 | 28.40 | 32.00 | B | | |
| | -- | 87759-2215 | 87759-2265 | 87759-2275 | -- | 22 | -- | 21.90 | 20.00 | 22.20 | 20.20 | 40.40 | 44.00 | B | | |
| | -- | 87759-2415 | 87759-2465 | 87759-2475 | -- | 24 | -- | 23.90 | 22.00 | 24.20 | 20.20 | 40.40 | 44.00 | B | | |
| | -- | 87759-2615 | 87759-2665 | 87759-2675 | -- | 26 | -- | 25.90 | 24.00 | 26.20 | 20.20 | 40.40 | 44.00 | B | | |
| D | -- | 87759-2815 | 87759-2865 | 87759-2875 | -- | 28 | -- | 27.90 | 26.00 | 28.20 | 20.20 | 40.40 | 44.00 | B | | |
| | -- | 87759-3015 | 87759-3065 | 87759-3075 | -- | 30 | -- | 29.90 | 28.00 | 30.20 | 20.20 | 40.40 | 44.00 | B | | |
| | -- | 87759-3215 | 87759-3265 | 87759-3275 | -- | 32 | -- | 31.90 | 30.00 | 32.20 | 20.20 | 40.40 | 44.00 | B | | |
| | -- | 87759-3415 | 87759-3465 | 87759-3475 | -- | 34 | -- | 33.90 | 32.00 | 34.20 | 26.20 | 52.40 | 56.00 | B | | |
| | -- | 87759-3615 | 87759-3665 | 87759-3675 | -- | 36 | -- | 35.90 | 34.00 | 36.20 | 26.20 | 52.40 | 56.00 | B | | |
| | -- | 87759-3815 | 87759-3865 | 87759-3875 | -- | 38 | -- | 37.90 | 36.00 | 38.20 | 26.20 | 52.40 | 56.00 | B | | |
| C | -- | 87759-4015 | 87759-4065 | 87759-4075 | -- | 40 | -- | 39.90 | 38.00 | 40.20 | 26.20 | 52.40 | 56.00 | B | | |
| | -- | 87759-4215 | 87759-4265 | 87759-4275 | -- | 42 | -- | 41.90 | 40.00 | 42.20 | 26.20 | 52.40 | 56.00 | B | | |
| | -- | 87759-4415 | 87759-4465 | 87759-4475 | -- | 44 | -- | 43.90 | 42.00 | 44.20 | 26.20 | 52.40 | 56.00 | B | | |
| | -- | 87759-4615 | 87759-4665 | 87759-4675 | -- | 46 | -- | 45.90 | 44.00 | 46.20 | 26.20 | 52.40 | 56.00 | B | | |
| | -- | 87759-4815 | 87759-4865 | 87759-4875 | -- | 48 | -- | 47.90 | 46.00 | 48.20 | 26.20 | 52.40 | 56.00 | B | | |
| | -- | 87759-5015 | 87759-5065 | 87759-5075 | -- | 50 | -- | 49.90 | 48.00 | 50.20 | 34.20 | 68.40 | 72.00 | B | | |
| B | | | | | | | | | | | | | | | | |

| | | | | | | | | | |
|---|--|-------------------|---|---------------------------------------|-----------------|---------------|--------------|------------------------|--|
| CORRECT -0414/5 PK EC NO: S2018-0096 DRWN:FC500 CHKD:CGOH APPR:KLLIM | 2017/08/31 2017/10/01 2017/10/02 | REV DESCRIPTION | QUALITY SYMBOLS | GENERAL TOLERANCES (UNLESS SPECIFIED) | DIMENSION STYLE | SCALE | DESIGN UNITS | THIRD ANGLE PROJECTION | |
| | | | $F_A=0$ | mm INCH | MM ONLY | NTS | METRIC | | |
| | | | $F_G=0$ | 4 PLACES ± --- ± --- | DRAWN BY DATE | TITLE | | | |
| | | | $F_P=0$ | 3 PLACES ± --- ± --- | KSEE 2003/12/12 | CUSTOM HEADER | | | |
| | 2 PLACES ± 0.2 ± --- | CHECKED BY DATE | MGRID, 2MM DUAL ROW HDR. | | | | | | |
| | 1 PLACE ± --- ± --- | KCLING 2004/01/12 | SMT | | | | | | |
| | 0 PLACE ± ± | APPROVED BY DATE | | | | | | | |
| | ANGULAR ± 3° | SKTOH 2004/01/12 | | | | | | | |
| | DRAFT WHERE APPLICABLE MUST REMAIN WITHIN DIMENSIONS | MATERIAL NO. | SEE TABLE | | DOCUMENT NO. | SD-87759-117 | | | |
| | | SIZE | THIS DRAWING CONTAINS INFORMATION THAT IS PROPRIETARY TO MOLEX INCORPORATED AND SHOULD NOT BE USED WITHOUT WRITTEN PERMISSION | | | | SHEET NO. | 8 OF 8 | |

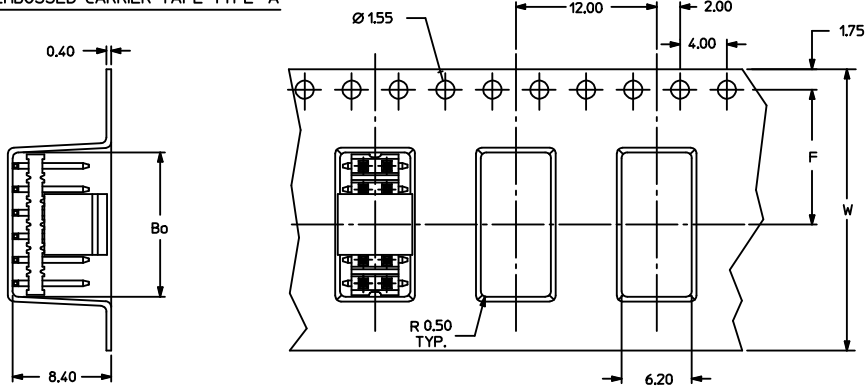


- NOTE:
- MATERIAL:
HSG & CAP - HIGH TEMPERATURE THERMOPLASTIC, UL 94V-0, COLOUR BLACK
PIN - 0.50 SQ PHOSPHOR BRONZE
 - PLATING:
**84 - 0.38um MIN GOLD PLATE AT CONTACT AREA, TIN PLATE AT SOLDER AREA, BOTH OVER NICKEL UNDERPLATE
**85 - 0.76um MIN GOLD PLATE AT CONTACT AREA, TIN PLATE AT SOLDER AREA, BOTH OVER NICKEL UNDERPLATE
(** - REPRESENTS DIFFERENT CKT SIZE , SEE TABLE AT SHT 3)
 - PIN PUSHOUT FORCE: 1KG MIN IN EITHER DIRECTION
 - PRODUCT SPEC PS-87761-100 APPLIES.
 - BEND DEPRESSION IS ACCEPTABLE SO LONG AS IT DOES NOT AFFECT THE OVERALL COPLANARITY OF TAIL.
 - COPLANARITY IS TO BE MEASURED BY RESTING THE SOLDER TAIL ON A GAUGE SURFACE.
 - CAP TO BE LOCATED AS CENTRAL OF PART AS POSSIBLE
TOP SURFACE OF CAP TO BE FLAT FOR THE PURPOSE OF PICK & PLACE BY VACUUM SUCTION NOZZLE.
 - FOR ILLUSTRATION PURPOSES, 12CKT IS SHOWN.
18CKT IS SHOWN ON SHT 2 FOR TAPE & REEL.
 - TUBE LENGTH IS 560MM REF STANDARD.

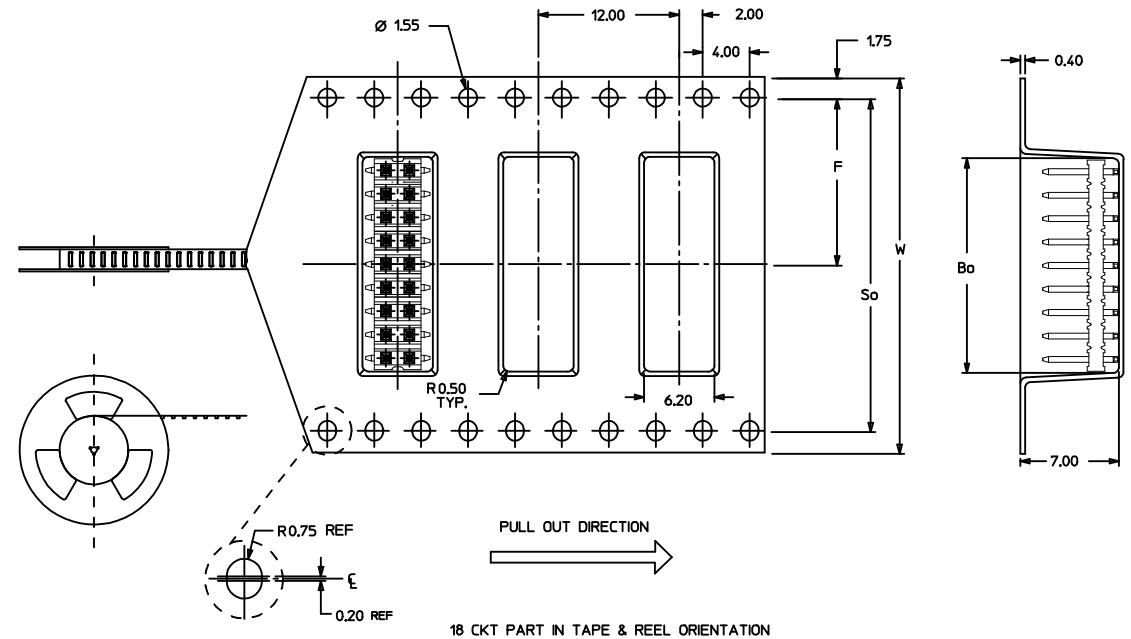
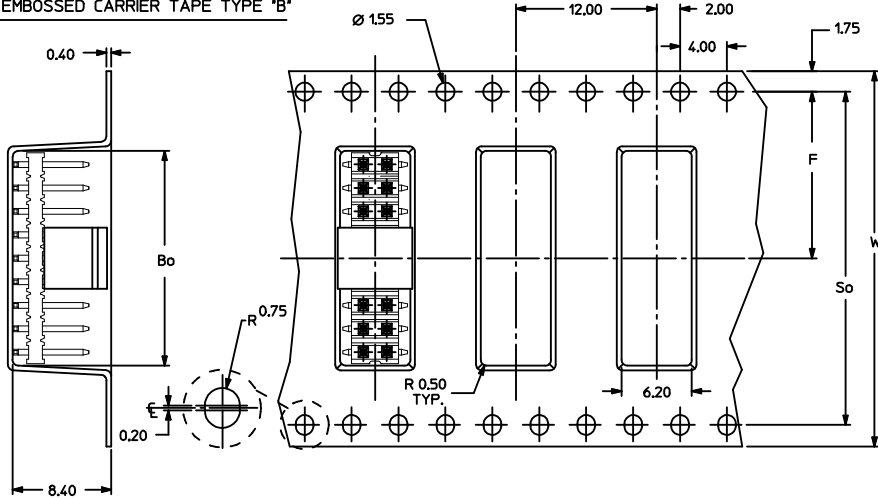
| | | | | | | | | | |
|--|-----------------------------------|--|--|-------------------|---------------------|--|---------------------------|------------------|--|
| EC NO: S2004-0293 DRWN:KSEE 2004/01/30 CHKD:KCLING 2004/01/30 APPR:SKTOH 2004/02/05 | QUALITY SYMBOLS ▽ - 0 ∇ - 0 | GENERAL TOLERANCES (UNLESS SPECIFIED) | | SCALE NTS | DESIGN UNITS METRIC | THIRD ANGLE PROJECTION | REVISE ON CAD ONLY | | |
| | | DIMENSION STYLE MM ONLY | | DRAWN BY KSEE | DATE 2003/12/23 | TITLE SALES DRAWING MGRID 2MM DUAL ROW SMT HDR | | | |
| | | ANGULAR ± 3 ° | | CHECKED BY KCLING | DATE 2004/01/12 | MOLEX INCORPORATED | | | |
| | | DRAFT WHERE APPLICABLE MUST REMAIN WITHIN DIMENSIONS | | APPROVED BY SKTOH | DATE 2004/01/12 | MATERIAL NO. SEE TABLE | DOCUMENT NO. SD-87759-215 | SHEET NO. 1 OF 3 | |

THIS DRAWING CONTAINS INFORMATION THAT IS PROPRIETARY TO MOLEX INCORPORATED AND SHOULD NOT BE USED WITHOUT WRITTEN PERMISSION

EMBOSSED CARRIER TAPE TYPE "A"



EMBOSSED CARRIER TAPE TYPE "B"



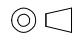



18 CKT PART IN TAPE & REEL ORIENTATION

| | | | | | | |
|--|-----------------|---------------------------------------|---|----------------------------|------------------------|---|
| EC NO: S2004-0293 DRWN:KSEE 2004/01/30 CHKD:KCLING 2004/01/30 APPR:SKTOH 2004/02/05 | QUALITY SYMBOLS | GENERAL TOLERANCES (UNLESS SPECIFIED) | SCALE NTS | DESIGN UNITS METRIC | THIRD ANGLE PROJECTION | REVISE ON CAD ONLY |
| | ▽ = 0 ∇ = 0 | mm | INCH | DIMENSION STYLE MM ONLY | | TITLE SALES DRAWING MGRID 2MM DUAL ROW SMT HDR |
| | | 4 PLACES ± --- ± --- | 3 PLACES ± --- ± --- | DRAWN BY KSEE | DATE 2003/12/23 | |
| | | 2 PLACES ± 0.2 ± --- | 1 PLACE ± --- ± --- | CHECKED BY KCLING | DATE 2004/01/12 | MOLEX INCORPORATED MATERIAL NO. SEE TABLE DOCUMENT NO. SD-87759-215 |
| A | DESCRIPTION | ANGULAR ± 3° | DRAFT WHERE APPLICABLE | APPROVED BY SKTOH | DATE 2004/01/12 | SHEET NO. 2 OF 3 |
| MUST REMAIN WITHIN DIMENSIONS | | | THIS DRAWING CONTAINS INFORMATION THAT IS PROPRIETARY TO MOLEX INCORPORATED AND SHOULD NOT BE USED WITHOUT WRITTEN PERMISSION | | | |

87759

| 10 | 9 | 8 | 7 | 6 | 5 | 4 | 3 | 2 | 1 |
|---------------------------------|---|----------|-------|-------|-------|-------|-------|-------|----------------|
| PART NUMBER WITHOUT CAP IN TUBE | PART NUMBER WITHOUT CAP IN TAPE & REEL. | CKT SIZE | A | B | Bo | F | So | W | EMBOSSSED TYPE |
| 87759-4014 | 87759-4084 | 40 | 39.90 | 38.00 | 40.20 | 26.20 | 52.40 | 56.00 | B |
| 87759-4015 | 87759-4085 | 40 | 39.90 | 38.00 | 40.20 | 26.20 | 52.40 | 56.00 | B |

| | | | | | | | |
|--|---|---|--|---|-------------------------------------|--|--------------------|
| EC NO: S2004-0293 DRWN:KSEE 2004/01/30 CHKD:KCLING 2004/01/30 APPR:SKTOH 2004/02/05 | QUALITY SYMBOLS  = 0  = 0 | GENERAL TOLERANCES (UNLESS SPECIFIED) | | SCALE NTS | DESIGN UNITS METRIC |  THIRD ANGLE PROJECTION | REVISE ON CAD ONLY |
| | | DIMENSION STYLE MM ONLY | TITLE SALES DRAWING MGRID 2MM DUAL ROW SMT HDR | | | | |
| | | DRAWN BY KSEE | DATE 2003/12/23 |  MOLEX INCORPORATED | | | |
| | | CHECKED BY KCLING | DATE 2004/01/12 | MATERIAL NO. SEE TABLE | DOCUMENT NO. SD-87759-215 | SHEET NO. 3 OF 3 | |
| APPROVED BY SKTOH | DATE 2004/01/12 | THIS DRAWING CONTAINS INFORMATION THAT IS PROPRIETARY TO MOLEX INCORPORATED AND SHOULD NOT BE USED WITHOUT WRITTEN PERMISSION | | B | | | |