

FEATURES AND SPECIFICATIONS

Features and Benefits

- Sizes 2 to 20 circuits
- Staggered solder tails: 2.50 x 2.50mm
- Board retention pegs
- Polarized to header and to PCB

Reference Information

Product Specification: 99020-0018
 Packaging: Tray
 Mates With: [90648](#)
 Designed In: Millimeters

Electrical

Voltage: 250V DC max.
 Current: 3.0A
 Contact Resistance: 8mΩ max.
 Insulation Resistance: 500 MΩ min.

Mechanical

Contact Retention to Housing: 15N per contact min.
 Mating Force: 5N max.
 Unmating Force: 3N min.
 Durability: 15 cycles

Physical

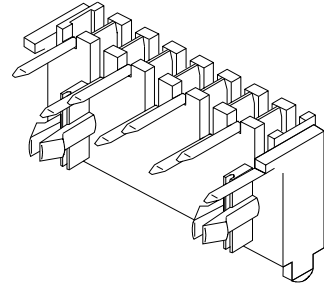
Housing: Polyester, UL 94V-0
 Contact: Phosphor Bronze
 Plating: 3μm Tin/Lead
 Operating Temperature: -25 to +85°C



2.50mm (.098") Pitch User Friendly Board-To-Board Receptacle

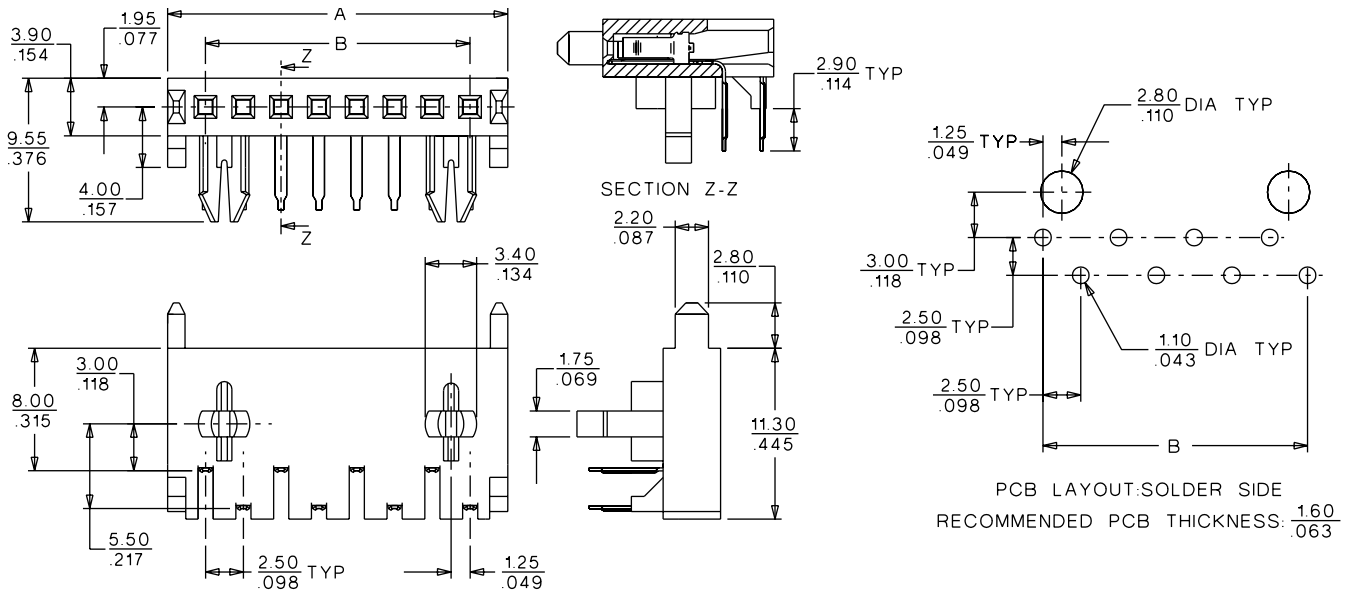
90651

Right Angle, Unlatched



B 2.00 to 2.50mm (.079 to .098") Pitch

CATALOG DRAWING (FOR REFERENCE ONLY)



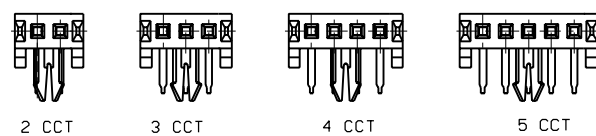
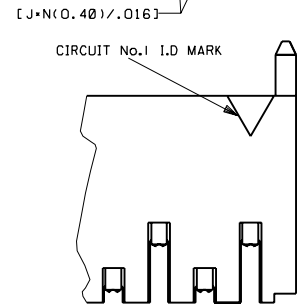
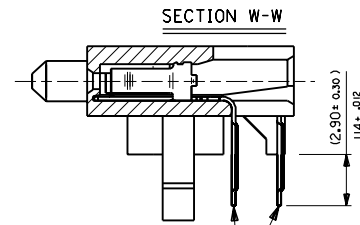
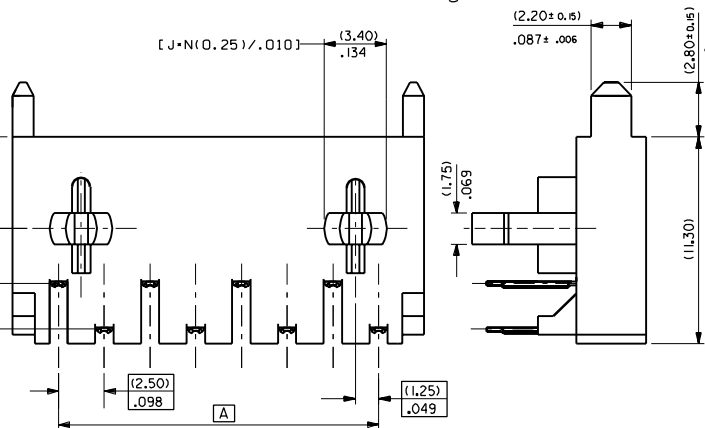
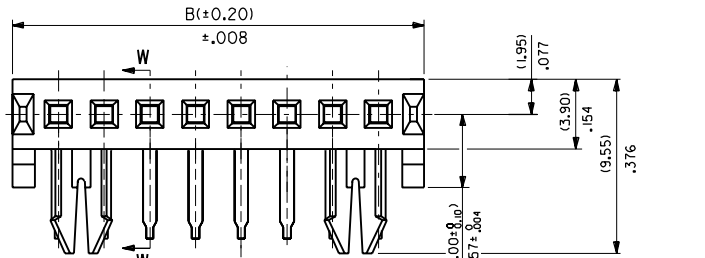
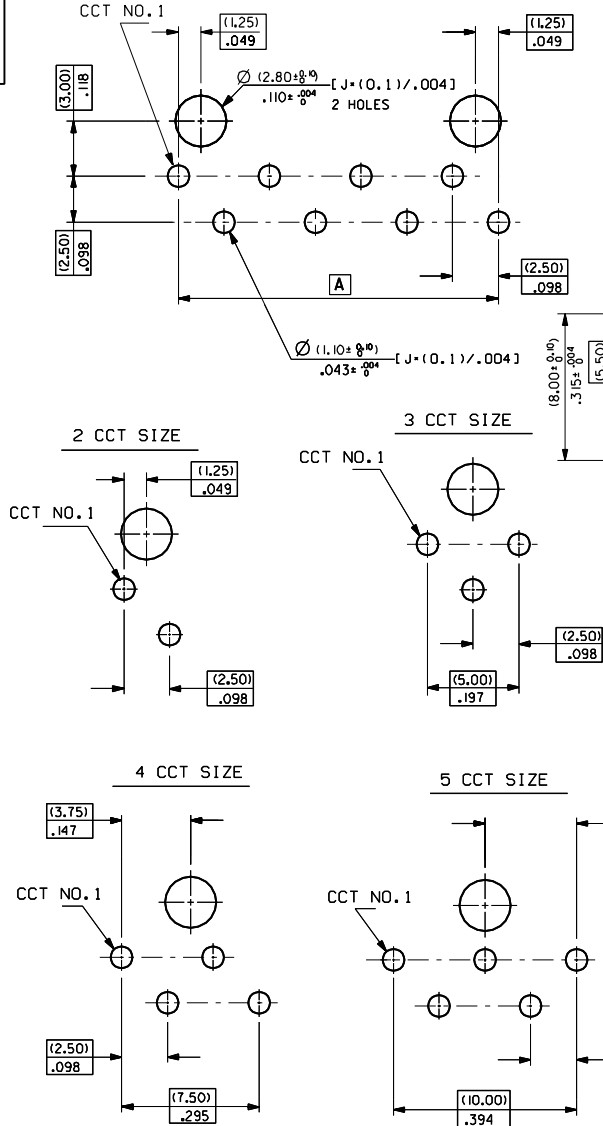
ORDERING INFORMATION AND DIMENSIONS

Circuits	Order No.	Dimension	
		A	B
2	90651-0002	7.50 (.295)	2.50 (.098)
3	90651-0003	10.00 (.394)	5.00 (.197)
4	90651-0004	12.50 (.492)	7.50 (.295)
5	90651-0005	15.00 (.591)	10.00 (.394)
6	90651-0006	17.50 (.689)	12.50 (.492)
7	90651-0007	20.00 (.787)	15.00 (.591)
8	90651-0008	22.50 (.886)	17.50 (.689)
9	90651-0009	25.00 (.984)	20.00 (.787)
10	90651-0010	27.50 (1.083)	22.50 (.886)
11	90651-0011	30.00 (1.181)	25.00 (.984)

Circuits	Order No.	Dimension	
		A	B
12	90651-0012	32.50 (1.280)	27.50 (1.083)
13	90651-0013	35.00 (1.378)	30.00 (1.181)
14	90651-0014	37.50 (1.476)	32.50 (1.280)
15	90651-0015	40.00 (1.575)	35.00 (1.378)
16	90651-0016	42.50 (1.673)	37.50 (1.476)
17	90651-0017	45.00 (1.772)	40.00 (1.575)
18	90651-0018	47.50 (1.878)	42.50 (1.673)
19	90651-0019	50.00 (1.969)	45.00 (1.772)
20	90651-0020	52.50 (2.067)	47.50 (1.870)

PART NO. SEE CHART
 DWG. NO. SDA-9065IE

RECOMMENDED P.C.B. HOLE LAYOUT
 SEEN FROM SOLDER SIDE OF P.C.B.
 P.C.B. THICKNESS 1.45 TO 1.74

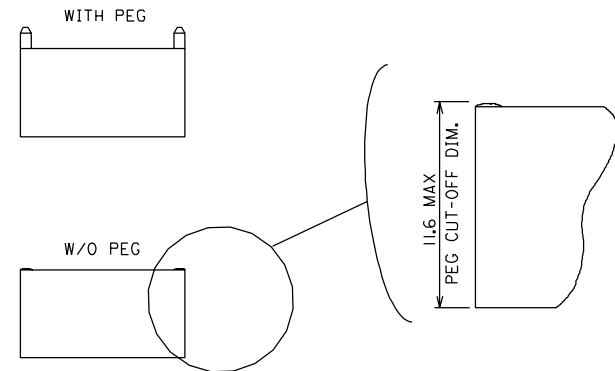


NEW BORDER EC NO. E2001-0528 DRWN: SF 2000/11/09 CHK: CHK: APPR:	DESCRIPTION MAJOR CRITICAL C	GENERAL TOLERANCES: (UNLESS SPECIFIED)		SCALE 4 : 1	DESIGN UNITS <input checked="" type="checkbox"/> mm <input type="checkbox"/> INCH	THIRD ANGLE PROJECTION <input checked="" type="checkbox"/> mm <input type="checkbox"/> INCH	TITLE: 2.5mm UF Rcpt B-To-B RA NLtc	
		2 PLACES ± 0.20	3 PLACES ± 0.008	4 PLACES $\pm 0.$	5 PLACES $\pm 0.$	CHECKED BY & DATE EFOLAN 2000/11/09	APPROVED BY & DATE MWILHITE 2000/11/09	MOLEX INCORPORATED
REV		DRAFT WHERE APPLICABLE MUST REMAIN WITHIN DIMENSIONS		CAD FILENAME S9065I.XI DGN		MATERIAL NO. SEE CHART	DRAWING NO. SDA-9065IE	SHEET NO. 10F2

PART NO. SEE CHART
 DWG. NO. SDA-9065 IE

CCT SIZE	ENG. NUMBER	DIM mm	DIM inch
0	90651-X002	(2.50)/.098	(.750)/.295
1	-X003	(5.00)/.197	(10.00)/.394
2	-X004	(7.50)/.295	(12.50)/.492
3	-X005	(10.00)/.394	(15.00)/.591
4	-X006	(12.50)/.492	(17.50)/.689
5	-X007	(15.00)/.591	(20.00)/.787
6	-X008	(17.50)/.689	(22.50)/.886
7	-X009	(20.00)/.787	(25.00)/.984
8	-X010	(22.50)/.886	(27.50)/1.083
9	-X011	(25.00)/.984	(30.00)/1.181
10	-X012	(27.50)/1.083	(32.50)/1.280
11	-X013	(30.00)/1.181	(35.00)/1.378
12	-X014	(32.50)/1.280	(37.50)/1.476
13	-X015	(35.00)/1.378	(40.00)/1.575
14	-X016	(37.50)/1.476	(42.50)/1.673
15	-X017	(40.00)/1.575	(45.00)/1.772
16	-X018	(42.50)/1.673	(47.50)/1.870
17	-X019	(45.00)/1.772	(50.00)/1.969
18	90651-X020	(47.50)/1.870	(52.50)/2.067

E.G. 90651-X020
 0 = WITH PEG
 1 = W/O PEG
 CCT SIZE



SEE SHEET 1. P.C. NO. DRWN: CHK: APPR:	QUALITY SYMBOLS MAJOR = CRITICAL =	GENERAL TOLERANCES: (UNLESS SPECIFIED)		SCALE	DESIGN UNITS	THIRD ANGLE PROJECTION	DIMENSIONS:	SHT	REV
		mm INCH		<input checked="" type="checkbox"/> mm <input type="checkbox"/> INCH	<input type="checkbox"/> mm <input type="checkbox"/> INCH <input type="checkbox"/> mm ONLY	REVISE ON CAD ONLY			
		4 PLACES ±0. ±. 3 PLACES ±0. ±. 2 PLACES ±0. ±. 1 PLACE ±0. ±.	DRAWN BY & DATE SFARKAS 2000/11/09	TITLE: 2.5mm UF Rcpt B-To-B RA NLtc					
		ANGULAR: ± °	CHECKED BY & DATE EFOLAN 2000/11/09	APPROVED BY & DATE MWILHITE 2000/11/09		MOLEX INCORPORATED			
DRAFT WHERE APPLICABLE MUST REMAIN WITHIN DIMENSIONS	CAD FILENAME s9065 ix2.dgn	MATERIAL NO. SEE CHART	DRAWING NO. SDA-9065 IE	SHEET NO. 20F	SIZE B				

THIS DRAWING CONTAINS INFORMATION THAT IS PROPRIETARY TO MOLEX INCORPORATED AND SHOULD NOT BE USED WITHOUT WRITTEN PERMISSION.