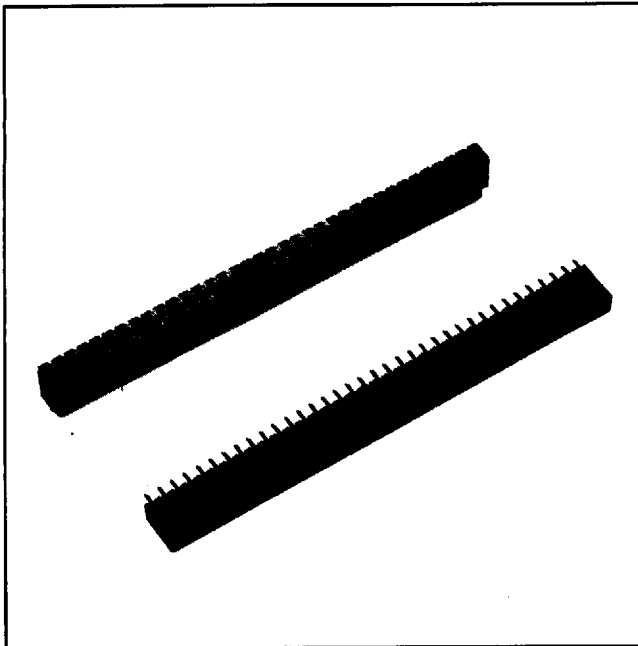


.100" × .100" Boardmount Socket

.100" × .150" Straight Solder Tails

929 Series



- 2–80 contacts
- Tuning fork contact design
- Gold or tin lead plating
- .100" × .100" mating interface — .100" × .150" solder tail matrix
- Solder stand-offs facilitate production wave soldering
- Optional board retention feature

TS-0213-09
Sheet 1 of 2

24

Physical

Insulation

Material: Glass Filled Polyester (PBT)

Flammability: UL 94V-0

Color: Black

Contact

Material: Copper Alloy

Plating Options:

Gold

Underplating: 100 μ " [2.54 μ m] Nickel — QQ-N-290, Class 2

Wiping Area: See ordering information options for thickness

Solder Tails: Tin Lead (4 Sided) — Mil-P-81728

Tin Lead

Underplating: 100 μ " [2.54 μ m] Nickel — QQ-N-290, Class 2 (2 sided Pre-Plated)

Wiping Area: Copper Alloy

Solder Tails: Tin Lead (2 Sided Pre-Plate) — Mil-P-81728

Electrical

Current Rating: 1 A

Insulation Resistance: $> 5 \times 10^9 \Omega$ at 500 Vdc

Withstanding Voltage: 1500 Vrms at Sea Level

Environmental

Temperature Rating: -40°C to 105°C

UL File No.: E68080

3M Electronic Products Division **D 19F ■ 9035312 0004254 65T ■**

<http://www.3M.com/interconnects/>

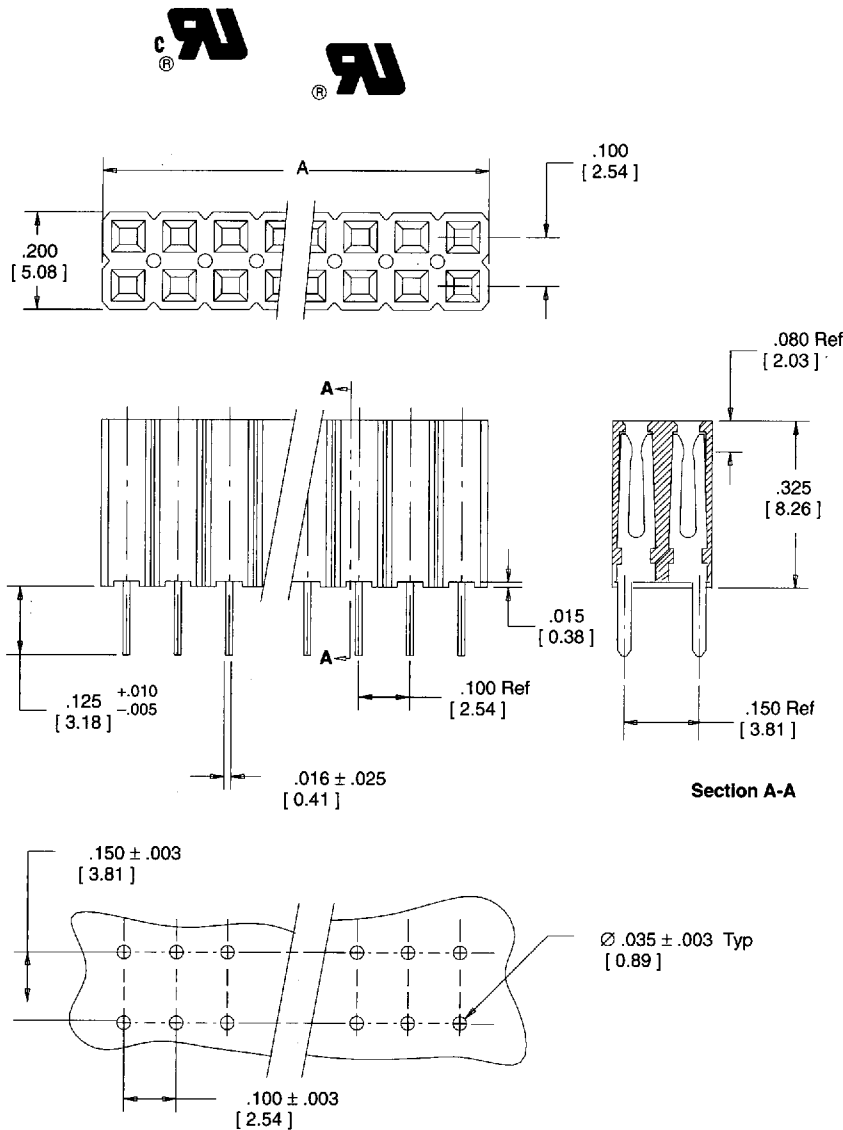
56

For technical, sales or ordering information call
800-225-5373

.100" × .100" Boardmount Socket

.100" × .150" Straight Solder Tails

929 Series



Recommended Mounting Hole Pattern
(Shown for Mounting Side of Board)

| Contact Quantity | Contact Code | Dimension A |
|------------------|--------------|-----------------|
| 02 | 01 | 0.10 [2.54] |
| 04 | 02 | 0.20 [5.08] |
| 06 | 03 | 0.30 [7.62] |
| 08 | 04 | 0.40 [10.16] |
| 10 | 05 | 0.50 [12.70] |
| 12 | 06 | 0.60 [15.24] |
| 14 | 07 | 0.70 [17.78] |
| 16 | 08 | 0.80 [20.32] |
| 18 | 09 | 0.90 [22.86] |
| 20 | 10 | 1.00 [25.40] |
| 22 | 11 | 1.10 [27.94] |
| 24 | 12 | 1.20 [30.48] |
| 26 | 13 | 1.30 [33.02] |
| 28 | 14 | 1.40 [35.56] |
| 30 | 15 | 1.50 [38.10] |
| 32 | 16 | 1.60 [40.64] |
| 34 | 17 | 1.70 [43.18] |
| 36 | 18 | 1.80 [45.72] |
| 38 | 19 | 1.90 [48.26] |
| 40 | 20 | 2.00 [50.80] |
| 42 | 21 | 2.10 [53.34] |
| 44 | 22 | 2.20 [55.88] |
| 46 | 23 | 2.30 [58.42] |
| 48 | 24 | 2.40 [60.96] |
| 50 | 25 | 2.50 [63.50] |
| 52 | 26 | 2.60 [66.04] |
| 54 | 27 | 2.70 [68.58] |
| 56 | 28 | 2.80 [71.12] |
| 58 | 29 | 2.90 [73.66] |
| 60 | 30 | 3.00 [76.20] |
| 62 | 31 | 3.10 [78.74] |
| 64 | 32 | 3.20 [81.28] |
| 66 | 33 | 3.30 [83.82] |
| 68 | 34 | 3.40 [86.36] |
| 70 | 35 | 3.50 [88.90] |
| 72 | 36 | 3.60 [91.44] |
| 80 | 40 | 4.00 [101.60] |

Notes:

1. Maximum recommended mating header pin length is .25 [6.4].
2. Recommended to be mated to the .100 [2.54] X .100 [2.54] pin strip headers: 2400 series, 929 series, and 2300 series.

| | Inch [mm] | | |
|------|------------------------|------|-------|
| | Tolerance Unless Noted | | |
| | .0 | .00 | .000 |
| Inch | ±.1 | ±.01 | ±.005 |

[] Dimensions for Reference only

Ordering Information

9X9XXX-01-XX-XX

Board Mounting Option:
2 = Standard Product without Kinked Tail
R = with Kinked Tail Board Retention Feature

Plating Options:
855 = Gold
977 = 100 μ" [2.54 μm] Tin Lead

Contact Code:
See Table

Gold Plating Thickness on Wiping Area:
10 = 10 μ" [0.25 μm]
30 = 30 μ" [0.76 μm]

(No entry required for Tin Lead plating)

TS-0213-09
Sheet 2 of 2