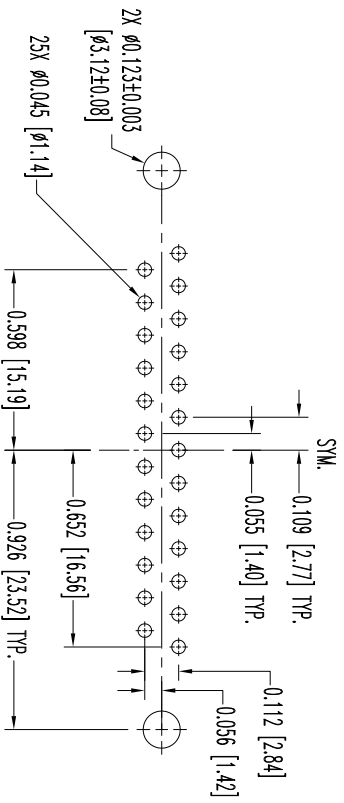
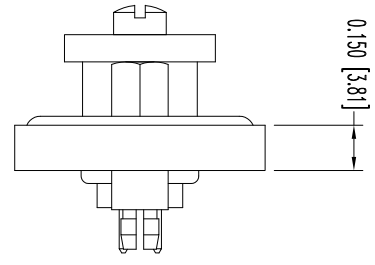
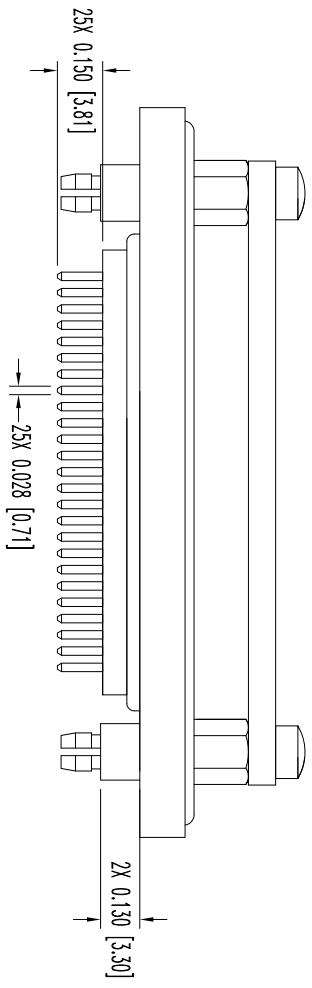
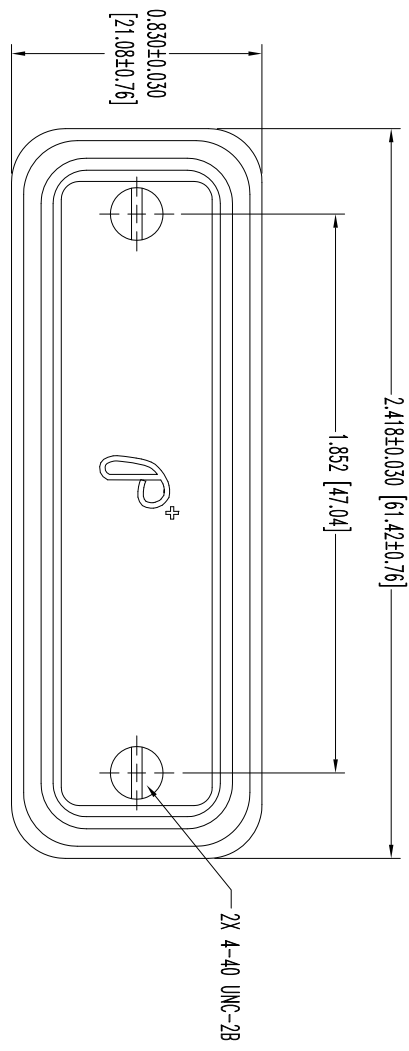


THIS DRAWING CONTAINS INFORMATION PROPRIETARY TO POSITRONIC AND ITS SUBSIDIARIES. POSITRONIC BELIEVES THE DATA ON THIS DRAWING TO BE RELIABLE, SINCE THE TECHNICAL DRAWING PERSONNEL HAVE REVIEWED THE DRAWING FOR CONFORMANCE WITH THE DRAWING STANDARDS AND RISK. POSITRONIC ASSUMES NO RESPONSIBILITY FOR RESULTS OBTAINED OR DAMAGES INCURRED FROM USE OF SUCH INFORMATION IN WHOLE OR IN PART.




CONTACT HOLE PATTERN

NOTES:

1. MATERIALS AND FINISHES:
INSULATOR/PANEL MOUNTING PLATE: NYLON RESIN, UL 94V-0, COLOR: BLACK.
CONTACTS: PRECISION MACHINED COPPER ALLOY, GOLD FLASH OVER NICKEL PLATE.
SHELLS AND JACKSCREW SYSTEMS: STEEL, ZINC PLATE WITH CHROMATE SEAL.
DUST COVER: CONDUCTIVE POLYESTER, COLOR: BLACK.
PUSH FASTENERS: PHOSPHOR BRONZE WITH TIN PLATE.
SCREWS AND WASHERS: BRASS, ZINC PLATE WITH CHROMATE SEAL.
O-RING: NITRILE, COLOR: BLACK.
2. DETAILED PRODUCT, MECHANICAL, AND ELECTRICAL INFORMATION IS AVAILABLE IN THE LATEST ENVIRONMENTAL D-SUB PRODUCT PUBLICATION. VISIT CONNECTPOSITRONIC.COM/PRODUCTS/61/ENVIRONMENTALLYSEALED-OR-CONNECTPOSITRONIC.COM.
3. CONNECTORS ARE COMPLIANT TO THE CURRENT ROHS DIRECTIVE.
4. DIMENSIONS ARE IN INCHES [MILLIMETERS].

DATE	REV	REVISION/RECORD	APP	DR	CK
10-26-11	NC	ECO 34636	COLM	BE	COLM
6-13-13	A	ECO 39760	COLM	BE	COLM

SK12790



POSITRONIC INDUSTRIES INC.
www.connectpositronic.com

FSCM 28198

DECIMAL TOL.	± 0.015 [0.38]
ANGULAR TOL.	± 5°
DATE	10-26-11
DRAWING NUMBER	WD25F3CG8AT7U/AA
SCALE	N.T.S.
DRAWN BY	B. EVANS
APPROVED BY	COLE
REV.	A