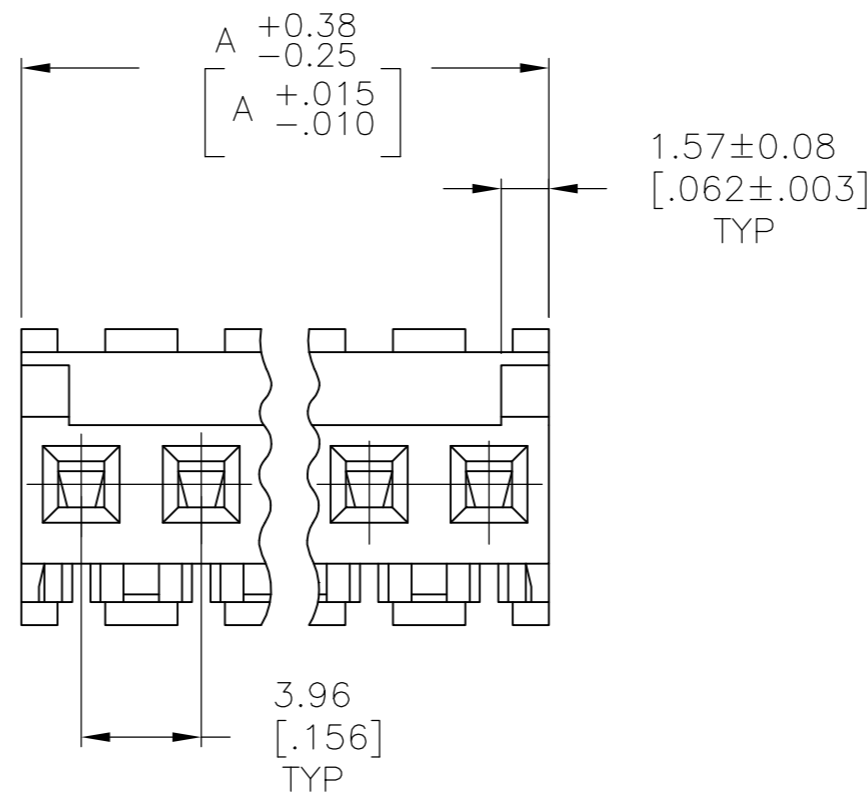
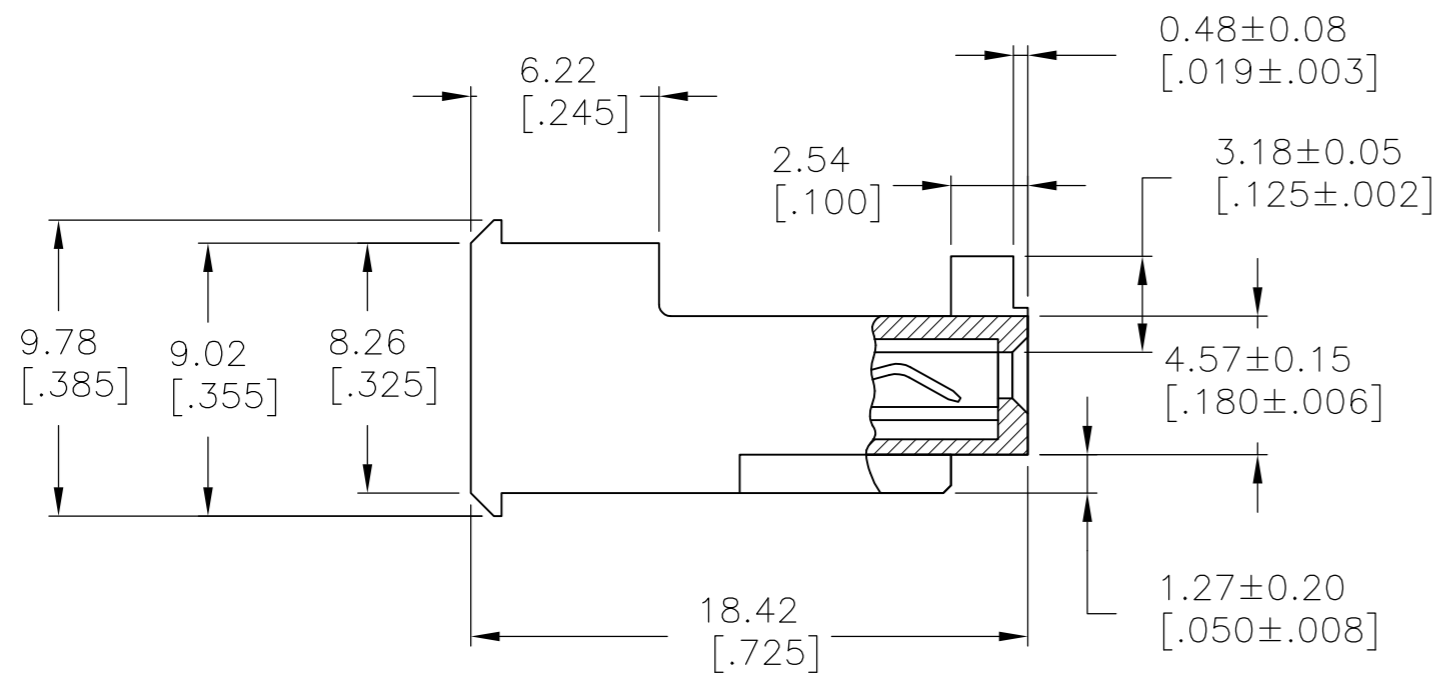
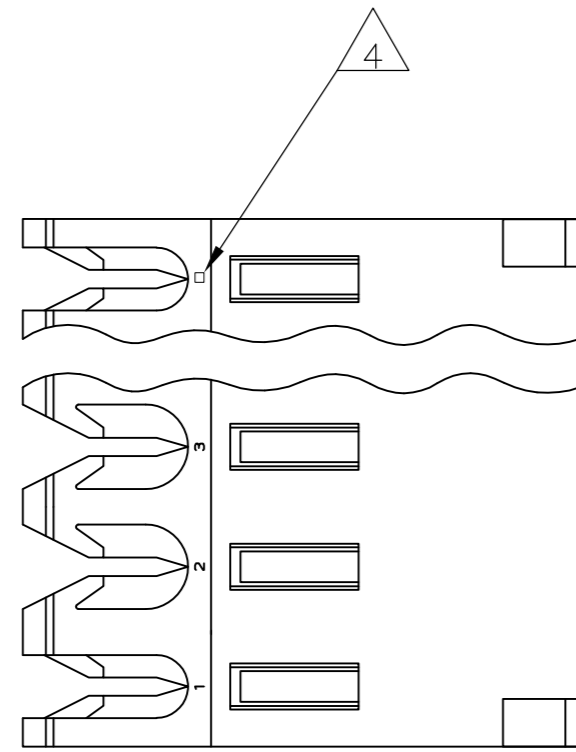


THIS DRAWING IS UNPUBLISHED. RELEASED FOR PUBLICATION
 © COPYRIGHT BY TYCO ELECTRONICS CORPORATION. ALL RIGHTS RESERVED.

| LOC | DIST | REVISIONS | | | | | |
|-----|------|-----------|-----|---------------|---------|-----|------|
| | | P | LTR | DESCRIPTION | DATE | DWN | APVD |
| CM | 54 | | C | ECO-07-012855 | 06JUN07 | KW | DB |



1 MATERIAL: CONNECTOR - NYLON UL94V-2 (YELLOW).
 CONTACTS - 0.30[.012] THICK COPPER ALLOY
 BRIGHT TIN-LEAD 0.00203[.000080] MIN THICK FOR
 CONTACTS 644470-2 THRU 1-644470-4
 MATTE WHISKER MITIGATED TIN 0.00203[.000080] MIN
 THICKNESS OVER NICKEL UNDERPLATE FOR
 3-644470-2 THRU 4-644470-4

- 2. CONTACTS ACCEPT 20 AWG WIRE WITH 2.41[.095] MAX INSULATION DIAMETER.
- 3. CONTACTS MUST ACCEPT 1.14±0.03 [.045±.001] SQUARE POST AND REMAIN LOCKED IN POSITION.
- 4 IDENTIFICATION NUMBER FOR LAST CIRCUIT MAY NOT APPEAR ON ALL ASSEMBLIES.
- 5. DIMENSIONS IN BRACKETS ARE IN INCHES.
- 6. HOUSING FEATURES ARE: FEED-THRU WITHOUT LOCKING RAMP AND WITH POLARIZING TAB.

| | | |
|---------------|----------------|------------|
| 55.47 [2.184] | 14 | 4-644470-4 |
| 51.51 [2.028] | 13 | 4-644470-3 |
| 47.55 [1.872] | 12 | 4-644470-2 |
| 43.59 [1.716] | 11 | 4-644470-1 |
| 39.62 [1.560] | 10 | 4-644470-0 |
| 35.66 [1.404] | 9 | 3-644470-9 |
| 31.70 [1.248] | 8 | 3-644470-8 |
| 27.74 [1.092] | 7 | 3-644470-7 |
| 23.77 [.936] | 6 | 3-644470-6 |
| 19.81 [.780] | 5 | 3-644470-5 |
| 15.85 [.624] | 4 | 3-644470-4 |
| 11.89 [.468] | 3 | 3-644470-3 |
| 7.92 [.312] | 2 | 3-644470-2 |
| 55.47 [2.184] | 14 | 1-644470-4 |
| 51.51 [2.028] | 13 | 1-644470-3 |
| 47.55 [1.872] | 12 | 1-644470-2 |
| 43.59 [1.716] | 11 | 1-644470-1 |
| 39.62 [1.560] | 10 | 1-644470-0 |
| 35.66 [1.404] | 9 | 644470-9 |
| 31.70 [1.248] | 8 | 644470-8 |
| 27.74 [1.092] | 7 | 644470-7 |
| 23.77 [.936] | 6 | 644470-6 |
| 19.81 [.780] | 5 | 644470-5 |
| 15.85 [.624] | 4 | 644470-4 |
| 11.89 [.468] | 3 | 644470-3 |
| 7.92 [.312] | 2 | 644470-2 |
| DIM A | NO OF CIRCUITS | PART NO |

644470

B

A

METRIC

| | | | | |
|---|--|---------------------------------|---|--------------------|
| THIS DRAWING IS A CONTROLLED DOCUMENT. | | DWN B. LEWIS 12 FEB 91 | Tyco Electronics Corporation Harrisburg, Pa 17105-3608 | |
| DIMENSIONS: mm [INCHES] | | CHK R. SWING 12 FEB 91 | NAME D.R. CLARK | |
| TOLERANCES UNLESS OTHERWISE SPECIFIED: 0 PLC ± - 1 PLC ± - 2 PLC ± - 3 PLC ± - 4 PLC ± - ANGLES ± - | | APVD D.R. CLARK 20 FEB 91 | PRODUCT SPEC 108-1051 | |
| MATERIAL 1 | | FINISH 1 | APPLICATION SPEC 114-1020 | RESTRICTED TO - |
| CUSTOMER DRAWING | | WEIGHT - | SIZE A2 | CAGE CODE 00779 |
| | | DRAWING NO C=644470 | | SCALE 4:1 |
| | | SHEET 1 OF 1 | | REV C |