

HERMETIC POWER MOSFETs

N-CHANNEL, (TO-254, TO-257)									
TYPE NUMBER	DRAIN TO SOURCE BREAKDOWN VOLTAGE $V_{(BR)DSS}$	CONTINUOUS DRAIN CURRENT I_D		MAXIMUM POWER DISSIPATION P_D	STATIC DRAIN TO SOURCE ON RESISTANCE $R_{DS(on)}$		MAXIMUM THERMAL RESISTANCE $R_{\theta JC}$	SIMILAR PART TYPE	PKG. STYLE
		25°C	100°C	25°C	Ohms	Amps			
SHD2261	60	20	20	60	.04	20	2.1	IRFY044	TO-257
SHD2262	100	18	12	60	.11	18	2.1	IRFY140	
SHD2263	200	12	7.8	60	.22	12	2.1	IRFY240	
SHD2264	400	6.9	4.4	60	.63	6.9	2.1	IRFY340	
SHD2265	500	5.5	3.5	60	.98	5.5	2.1	IRFY440	
SHD2266	800	4.8	3.0	60	2.0	3.0	2.1	IRFYE40	
SHD2267	900	4.3	2.7	60	2.5	2.7	2.1	IRFYF40	
SHD2268	1000	3.9	2.5	60	3.5	2.5	2.1	IRFYG40	
2N7218	100	28	20	125	.077	20	1.0	IRFM140	TO-254
2N7224	100	34	21	150	.07	21	0.83	IRFM150	
SHD2254	100	75	50	200	.025	37.5	0.7	75N10	
2N7219	200	18	1	125	.18	11	1.0	IRFM240	
2N7225	200	27.4	17	150	.100	17	0.83	IRFM250	
SHD2251	200	50	30	200	.05	25	0.7	50N20	
2N7221	400	10	6	125	.55	6	1.0	IRFM340	
2N7227	400	14	9	150	.315	9	0.83	IRFM350	
2N7222	500	8	5	125	.85	5	1.0	IRFM440	
2N7228	500	12	8	150	.415	8	0.83	IRFM450	
SHD2253	500	24	18	200	.23	12	0.7	24N50	
SHD2255	600	20	12	200	.35	10	0.7	20N60	
SHD2256	800	13	8	200	.80	6.5	0.7	13N80	
SHD2257	900	12	7.2	200	.90	6.0	0.7	12N90	
SHD2258	1000	12	7.2	200	1.05	6.0	0.7	12N100	

P-CHANNEL, (TO-254, TO-257)									
SHD2269	-100	-13	-8.2	60	.24	-13	2.1	IRFY9140	TO-257
SHD22610	-200	-7.7	-4.9	60	.58	-7.7	2.1	IRFY9240	
2N7236	-100	-18	-11	125	.20	-11	1.0	IRFM9140	TO-254
2N7237	-200	-11	-7	125	.51	-7	1.0	IRFM9240	

Note: Ceramic seals and GlidCop® leads available. See page 54 for ordering instructions.
 (Hermetic Power MOSFETs, Continued on Next Page.)

HERMETIC POWER MOSFETs (Continued)

N-CHANNEL, SURFACE MOUNT

TYPE NUMBER	DRAIN TO SOURCE BREAKDOWN VOLTAGE $V_{(BR)DSS}$	CONTINUOUS DRAIN CURRENT I_D		MAXIMUM POWER DISSIPATION P_D	STATIC DRAIN TO SOURCE ON RESISTANCE $R_{DS(on)}$		MAXIMUM THERMAL RESISTANCE $R_{\theta JC}$	SIMILAR PART TYPE	PKG. STYLE
		25°C	100°C	25°C	Ohms	Amps			
SHD2181	60	45	31	150	.02	21	0.6	IRF054	SHD-5
SHD2182	100	38	24	150	.055	24	0.6	IRF150	
SHD2183	200	30	19	150	.85	19	0.6	IRF250	
SHD2184	400	14	9	150	.30	9	0.6	IRF350	
SHD2185	500	12	7.75	150	.40	7.75	0.6	IRF450	
SHD2186	800	7.1	4.5	150	1.2	4.5	0.6	IRFAE50	
SHD2187	900	6.2	4.0	150	1.6	4.0	0.6	IRFAF50	
SHD2188	1000	5.6	3.5	150	2.0	3.5	0.6	IRFAG50	
SHD2181A	60	45	31	150	.02	21	0.6	IRF054	SHD-5A
SHD2182A	100	38	24	150	.055	24	0.6	IRF150	
SHD2183A	200	30	19	150	.085	19	0.6	IRF250	
SHD2184A	400	14	9	150	.30	9	0.6	IRF350	
SHD2185A	500	12	7.75	150	.40	7.75	0.6	IRF450	
SHD2186A	800	7.1	4.5	150	1.2	4.5	0.6	IRFAE50	
SHD2187A	900	6.2	4.0	150	1.6	4.0	0.6	IRFAF50	
SHD2188A	1000	5.6	3.5	150	2.0	3.5	0.6	IRFAG50	
SHD2181B	60	45	31	150	.02	21	0.6	IRF054	SHD-5B
SHD2182B	100	38	24	150	.055	24	0.6	IRF150	
SHD2183B	200	30	19	150	.085	19	0.6	IRF250	
SHD2184B	400	14	9	150	.30	9	0.6	IRF350	
SHD2185B	500	12	7.75	150	.40	7.75	0.6	IRF450	
SHD2186B	800	7.1	4.5	150	1.2	4.5	0.6	IRFAE50	
SHD2187B	900	6.2	4.0	150	1.6	4.0	0.6	IRFAF50	
SHD2188B	1000	5.6	3.5	150	2.0	3.5	0.6	IRFAG50	
SHD2301	60	33	21	50	.045	21	2.5	IRF054	LCC-28T
SHD2302	100	25	16	50	.075	16	2.5	IRF150	
SHD2303	200	21	14	50	.105	19	2.5	IRF250	
SHD2304	400	12	7.9	50	.32	9	2.5	IRF350	
SHD2305	500	10	6.9	50	.42	7.75	2.5	IRF450	
SHD2306	800	6.4	3.8	50	1.2	4.5	2.5	IRFAE50	
SHD2307	900	5.5	3.3	50	1.6	4.0	2.5	IRFAF50	
SHD2308	1000	5.0	3.0	50	2.0	3.5	2.5	IRFAG50	
SHD2191	60	35	21	125	.02	21	1.0	IRF054	LCC-3P
SHD2192	100	30	24	125	.055	20	1.0	IRF150	
SHD2193	200	30	19	125	.085	19	1.0	IRF250	
SHD2194	400	14	9	125	.30	9	1.0	IRF350	
SHD2195	500	12	7.75	125	.40	7.75	1.0	IRF450	
SHD2196	800	7.1	4.5	125	1.2	4.5	1.0	IRFAE50	
SHD2197	900	6.2	4.0	125	1.6	4.0	1.0	IRFAF50	
SHD2198	1000	5.6	3.5	125	2.0	3.5	1.0	IRFAG50	

(Hermetic Power MOSFETs, Continued on Next Page)

HERMETIC POWER MOSFETs (Continued)

P-CHANNEL, SURFACE MOUNT

TYPE NUMBER	DRAIN TO SOURCE BREAKDOWN VOLTAGE $V_{(BR)DSS}$	CONTINUOUS DRAIN CURRENT I_D		MAXIMUM POWER DISSIPATION P_D	STATIC DRAIN TO SOURCE ON RESISTANCE $R_{DS(on)}$		MAXIMUM THERMAL RESISTANCE $R_{\theta JC}$	SIMILAR PART TYPE	PKG. STYLE
		25°C	100°C		25°C	Ohms			
SHD2189	-100	-18	-11	125	.20	-11	1.0	IRF9140	SHD-5
SHD21810	-200	-11	-7	125	.50	-7	1.0	IRF9240	
SHD2189A	-100	-18	-11	125	.20	-11	1.0	IRF9140	SHD-5A
SHD21810A	-200	-11	-7	125	.50	-7	1.0	IRF9240	
SHD2189B	-100	-18	-11	125	.20	-11	1.0	IRF9140	SHD-5B
SHD21810B	-200	-11	-7	125	.50	-7	1.0	IRF9240	
SHD2309	-100	-13	-7.8	36	.22	-11	3.5	IRF9140	LCC-28T
SHD23010	-200	-8.5	-5.1	36	.52	-6	3.5	IRF9240	
SHD2199	-100	-18	-11	74	.20	-11	1.7	IRF9140	LCC-3P
SHD21910	-200	-11	-7	74	.50	-7	1.7	IRF9240	

Notes:

-All ratings are at $T_A = 25^\circ\text{C}$ unless otherwise specified.

-Maximum operating and storage temperature -55°C to $+150^\circ\text{C}$.

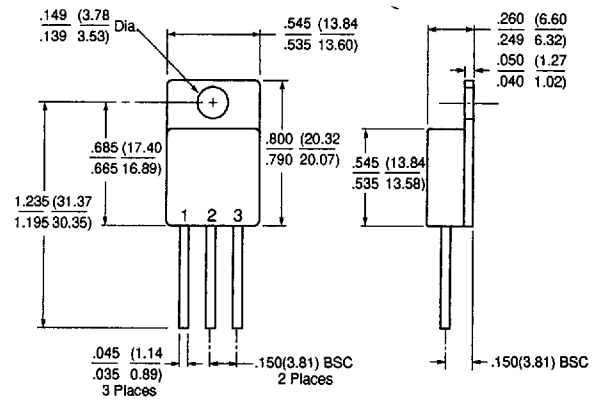
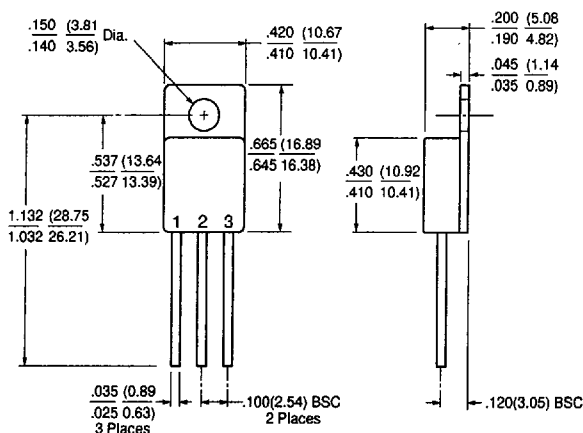
PINOUTS

DEVICE TYPE	PIN 1	PIN 2	PIN 3
MOSFET TO-257, TO-254	DRAIN	SOURCE	GATE

DEVICE TYPE	PIN 1	PIN 2	PIN 3
MOSFET SHD-5, SHD-5A, SHD-5B	DRAIN	SOURCE	GATE

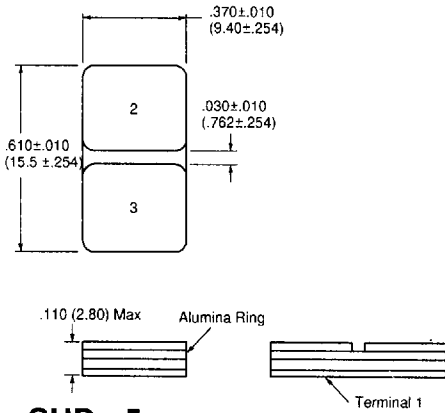
DEVICE TYPE	PIN(S) 1 & 15-28	PINS 5-11	PINS 2, 3, 13, 14
MOSFET LCC-28T	SOURCE	DRAIN	GATE

DEVICE TYPE	PIN 1	PIN 2	PIN 3
MOSFET LCC-3P	DRAIN	SOURCE	GATE

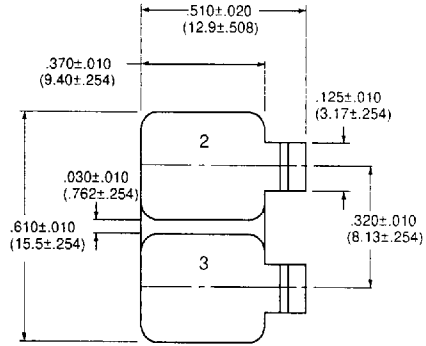


Note: Ceramic seals and GlidCop® leads available. See page 54 for ordering instructions.

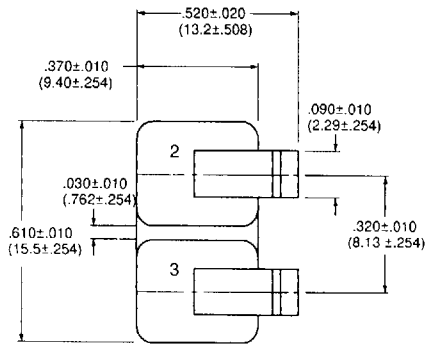
7503650 0001050 168



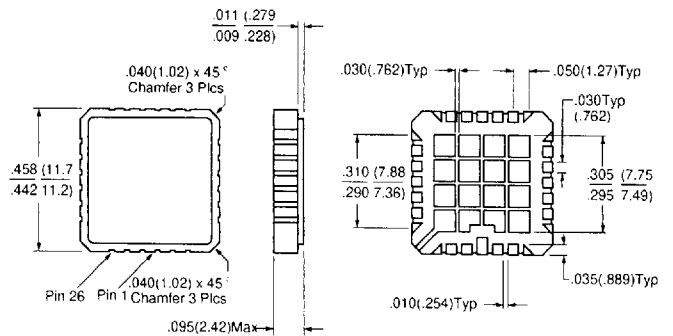
SHD - 5



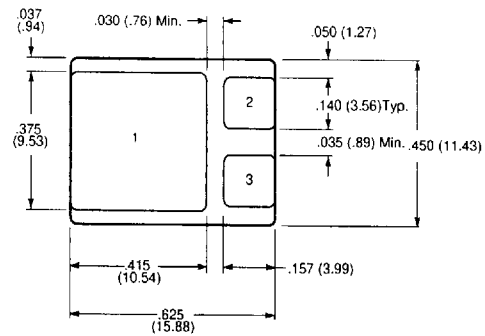
SHD - 5A



SHD - 5B



LCC - 28T



LCC - 3P