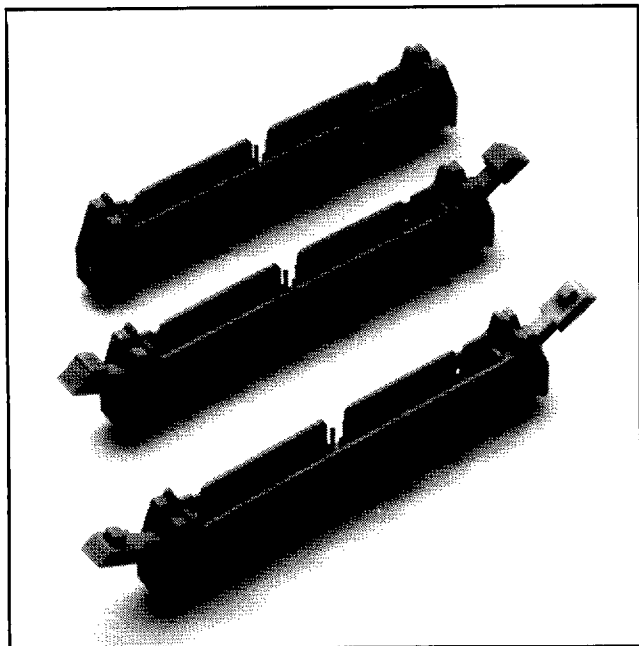


# .100" x .100" Latch/Ejector Header

Straight, 4 Wall, High Temp



- Optional ejector latches
- Mounting holes for securing header to board
- Shrouded to protect against physical and chemical pin damage
- Solder tail and wrap tail options
- High temperature

82

TS-0491-05  
Sheet 1 of 4

## Physical

### Insulation

Material: Glass Filled Polyester (PBT)  
Flammability: UL 94V-0  
Color: Beige

### Contact

Material: Phosphor Bronze (C510)  
Plating  
Underplate: 100  $\mu$ " [ 2.54  $\mu$ m ] Nickel — QQ-N-290, Class 2  
Wiping Area: 30  $\mu$ " [ 0.76  $\mu$ m ] Gold — MIL-G-45204, Type II, Grade C  
Solder Tails: 200  $\mu$ " [ 5.08  $\mu$ m ] 60/40 Tin Lead — MIL-P-81728  
Marking: 3M Logo, Part Identification Number and Orientation Triangle

## Electrical

Current Rating: 1 A  
Insulation Resistance:  $>1 \times 10^9 \Omega$  at 500 Vdc  
Withstanding Voltage: 1000 Vrms at Sea Level

## Environmental

Temperature Rating:  $-55^\circ\text{C}$  to  $+105^\circ\text{C}$   
Processing: Maximum  $235^\circ\text{C}$ , with 90 seconds over  $215^\circ\text{C}$

UL File No.: E68080  
CSA File No.: LR 40971

3M Electronic Products Division

6801 River Place Blvd.  
Austin, TX 78726-9000

9005413 0000221 686

# .100" x .100" Latch/Ejector Header

Straight, 4 Wall, High Temp

Sheet 2 of 4

Pin Qty	3M Part Number	Dimensions						Polarization Notches Provided		
		A	B	C	D		H			
10	3446-60XX	1.26 [32.0]	.71 [18.0]	1.105 [28.07]	2.00	50.8	.90 [22.9]	C		
	-62XX				2.18	55.4			1.08	27.4
	-63XX				2.10	53.3			1.00	25.4
	-64XX									
10	3662-60XX	1.26 [32.0]	.71 [18.0]	1.105 [28.07]	2.00	50.8	.90 [22.9]	B		
	-62XX				2.18	55.4			1.08	27.4
	-63XX				2.10	53.3			1.00	25.4
	-64XX									
14	3314-60XX	1.46 [37.1]	.91 [23.1]	1.305 [33.15]	2.20	55.9	.90 [22.9]	B C		
	-62XX				2.38	60.5			1.08	27.4
	-63XX				2.30	58.4			1.00	25.4
	-64XX									
16	3408-60XX	1.56 [39.6]	1.01 [25.7]	1.405 [35.69]	2.30	58.4	.90 [22.9]	A B C		
	-62XX				2.48	63.0			1.08	27.4
	-63XX				2.40	61.0			1.00	25.4
	-64XX									
20	3428-60XX	1.76 [44.7]	1.21 [30.7]	1.605 [40.77]	2.50	63.5	.90 [22.9]	A B C		
	-62XX				2.68	68.1			1.08	27.4
	-63XX				2.60	66.0			1.00	25.4
	-64XX									
24	3627-60XX	1.96 [49.8]	1.41 [35.8]	1.805 [45.85]	2.70	68.6	.90 [22.9]	A B C		
	-62XX				2.88	73.2			1.08	27.4
	-63XX				2.80	71.1			1.00	25.4
	-64XX									
26	3429-60XX	2.06 [52.3]	1.51 [38.4]	1.905 [48.39]	2.80	71.1	.90 [22.9]	A B C		
	-62XX				2.98	75.7			1.08	27.4
	-63XX				2.90	73.7			1.00	25.4
	-64XX									
30	3440-60XX	2.26 [57.4]	1.71 [43.4]	2.105 [53.47]	3.00	76.2	.90 [22.9]	A B C		
	-62XX				3.18	80.8			1.08	27.4
	-63XX				3.10	78.7			1.00	25.4
	-64XX									
34	3431-60XX	2.46 [62.5]	1.91 [48.5]	2.305 [58.55]	3.20	81.3	.90 [22.9]	A B C		
	-62XX				3.38	85.9			1.08	27.4
	-63XX				3.30	83.8			1.00	25.4
	-64XX									
40	3432-60XX	2.76 [70.1]	2.21 [56.1]	2.605 [66.17]	3.50	88.9	.90 [22.9]	A B C		
	-62XX				3.68	93.5			1.08	27.4
	-63XX				3.60	91.4			1.00	25.4
	-64XX									
50	3433-60XX	3.26 [82.8]	2.71 [68.8]	3.105 [78.87]	4.00	101.6	.90 [22.9]	A B C		
	-62XX				4.18	106.2			1.08	27.4
	-63XX				4.10	104.1			1.00	25.4
	-64XX									
60	3372-60XX	3.76 [96.5]	3.21 [81.5]	3.605 [91.57]	4.50	114.3	.90 [22.9]	A B C		
	-62XX				4.68	118.9			1.08	27.4
	-63XX				4.60	116.8			1.00	25.4
	-64XX									
64	3764-60XX	3.96 [100.7]	3.41 [86.6]	3.805 [96.65]	4.70	119.4	.90 [22.9]	A B C		
	-62XX				4.88	124.0			1.08	27.4
	-63XX				4.80	121.9			1.00	25.4
	-64XX									

3M Part No. Suffix	Contact Tail	Dim E	Dim F		
-6XX2	Solder Tail for .062 [ 1.57 ] Thick PC Board	.112 [ 2.84 ]	.0245 ± .0005 [ 0.622 ]	with	.028 ± .001 [ 0.71 ] diagonals
-6X03	Solder Tail for .094 to .125 [ 2.39 to 3.18 ] Thick PC Board	.155 [ 3.94 ]	.0245 ± .0005 [ 0.622 ]	with	.028 ± .001 [ 0.71 ] diagonals

**Notes:**

- Notches A & C will accommodate 3M Polarizing Keys (3M Part Number 3518 or M3518).
- Accepts rear and front entry: mounting hardware: #4-24 thread cutting screw, 3M Part #3341-5 (.116 [ 2.95 ] dia mounting hole). Front Entry (prior to installation of Latch): #2-56 bolt and nut, 3M Part #3341-6 (.106 [ 2.69 ] dia mounting hole).
- The recommended PCB hole size for the kinked tail positions on the .112" solder tail connector is .035" ± .002.

**Inch**  
[mm]

Tolerance Unless Noted			
	.0	.00	.000
Inch	± .1	± .01	± .005

[ ] Dimensions for Reference Only

## Ordering Information

N XXXX-6XXX

3M Part Number

Ejector/Latch System

- 0 = No Ejector/Latch
- 2 = Short Ejector/Latch (when non-strain relief socket is used.)
- 3 = Long Ejector/Latch (when socket with strain relief is used.)
- 4 = Ejector Only

Tail

- 02 = Solder Tails for .062 [ 1.57 ] Thick Board.
- K2 = Kinked Solder Tails for .062 [ 1.57 ] Thick Board.
- 03 = Solder Tails for .094 to .125 [ 2.39 to 3.18 ] Thick Board.

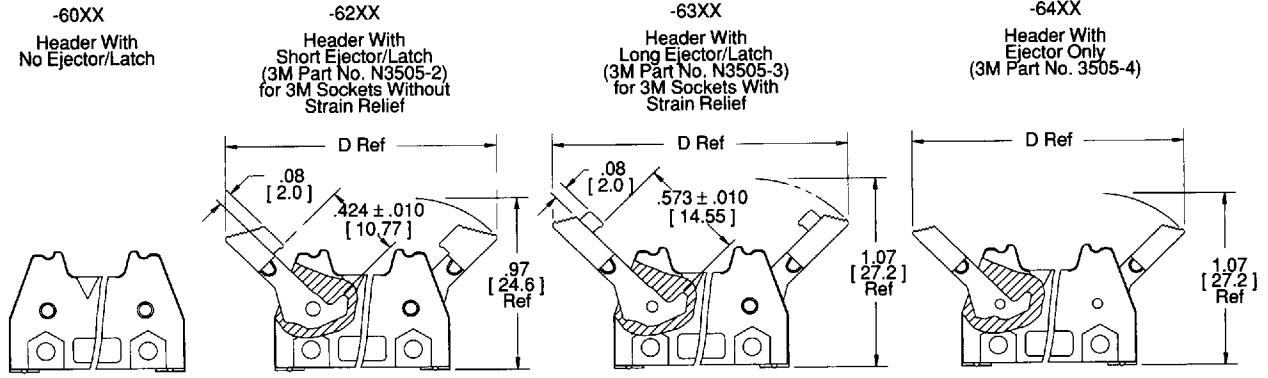
3M Electronic Products Division

6801 River Place Blvd.  
Austin, TX 78726-9000

9005413 0000222 512

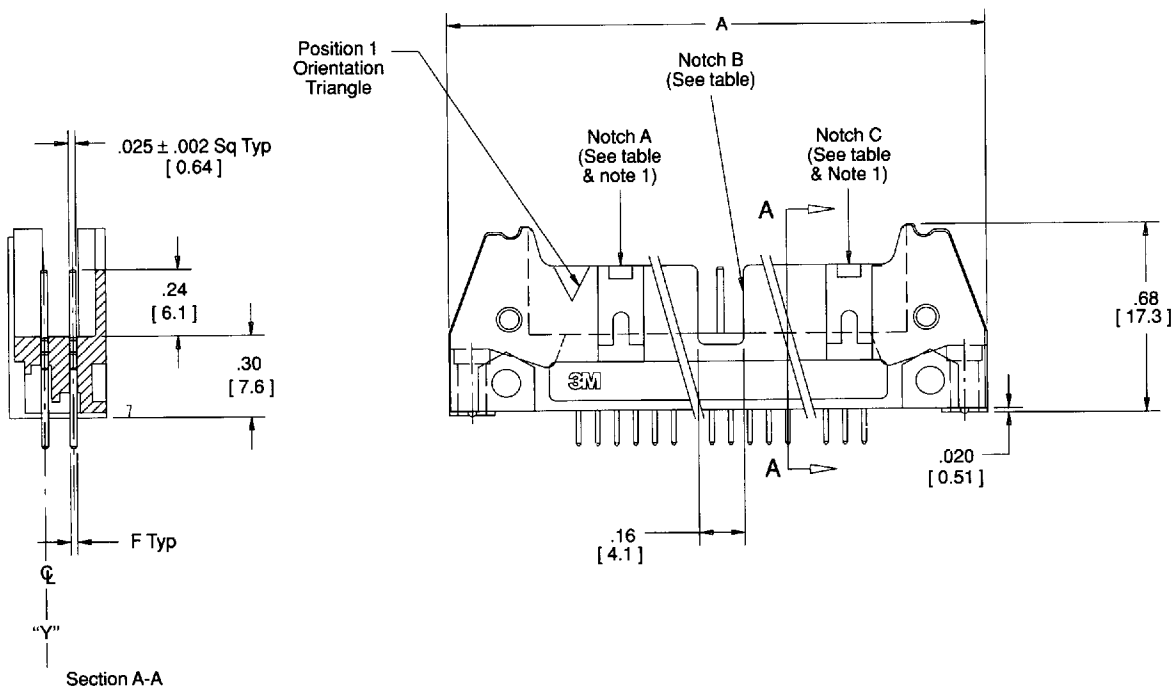
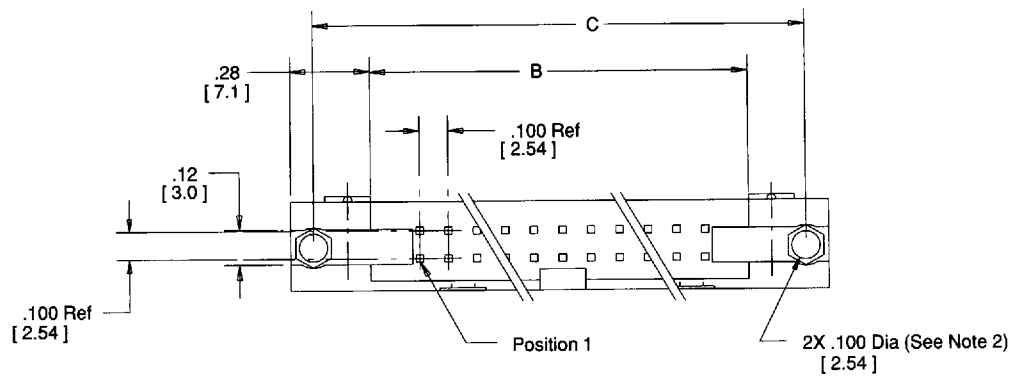
# .100" x .100" Latch/Ejector Header

Straight, 4 Wall, High Temp



Note - This Ejector is a Nickel Plated Zinc Alloy Casting.

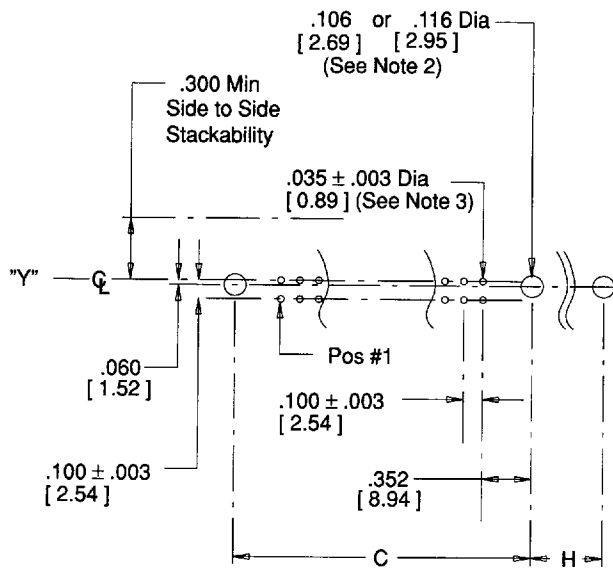
Sheet 3 of 4



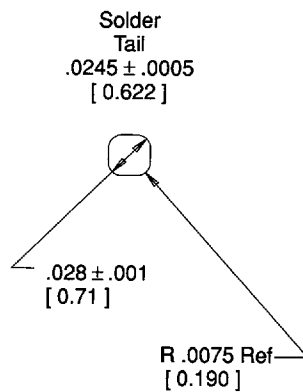
TS-0491-05

# .100" x .100" Latch/Ejector Header

Straight, 4 Wall, High Temp



Recommended Mounting Hold Pattern



Pin Cross Section

Sheet 4 of 4

TS-0491-05