

No. of Pins	Dimension(mm)		
	L1	L2	L3
004	1.27	2.54	
006	2.54	3.81	
008	3.81	5.08	2.54
010	5.08	6.35	3.81
012	6.35	7.62	5.08
014	7.62	8.89	6.35
016	8.89	10.16	7.62
018	10.16	11.43	8.89
020	11.43	12.70	10.16
022	12.70	13.97	11.43
024	13.97	15.24	12.70
026	15.24	16.51	13.97
028	16.51	17.78	15.24
030	17.78	19.05	16.51
032	19.05	20.32	17.78
034	20.32	21.59	19.05
036	21.59	22.86	20.32
038	22.86	24.13	21.59
040	24.13	25.40	22.86
042	25.40	26.67	24.13
044	26.67	27.94	25.40
046	27.94	29.21	26.67
048	29.21	30.48	27.94
050	30.48	31.75	29.21
052	31.75	33.02	30.48
054	33.02	34.29	31.75
056	34.29	35.56	33.02
058	35.56	36.83	34.29
060	36.83	38.10	35.56
062	38.10	39.37	36.83
064	39.37	40.64	38.10
066	40.64	41.91	39.37
068	41.91	43.18	40.64
070	43.18	44.45	41.91
072	44.45	45.72	43.18
074	45.72	46.99	44.45
076	46.99	48.26	45.72
078	48.26	49.53	46.99
080	49.53	50.80	48.26
082	50.80	52.07	49.53
084	52.07	53.34	50.80
086	53.34	54.61	52.07
088	54.61	55.88	53.34
090	55.88	57.15	54.61
092	57.15	58.42	55.88
094	58.42	59.69	57.15
096	59.69	60.96	58.42
098	60.96	62.23	59.69
100	62.23	63.50	60.96

REV.	DESCRIPTION	DRAWN	DATE
A	Release	Lyndon Lin	2008/03/27
L	Added Pin code "23/2"	Ryan Chou	2012/03/14

Order Code SP2-xxx-H xx/x - xx/11X

No. of Pins
Without locating pegs = **004 to 100**
With locating pegs = **008 to 100**

Packing
without "locating pegs"
A = tube; with pick & place pad
B = reel; with pick & place pad

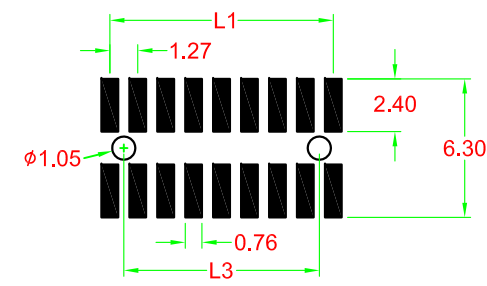
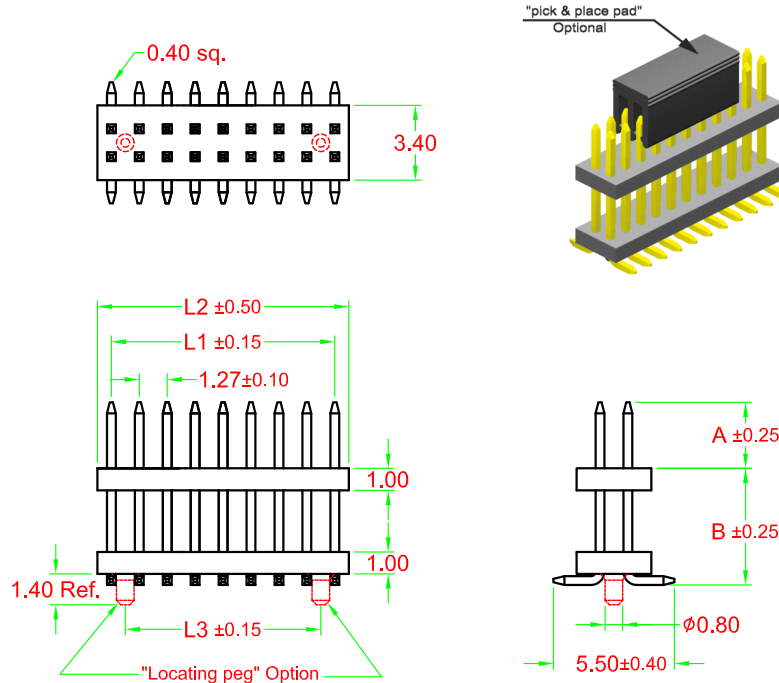
with "locating pegs"
C = tube; without pick & place pad
D = tube; with pick & place pad
E = reel; with pick & place pad

Pin Code	Dim."A" (mm)	Dim."B" (mm)	Pin Code	Dim.A (mm)	Dim.B (mm)
21/9	4.10	2.90	21/3	5.60	8.00
22/9	5.20	3.80	21/7	4.00	8.30
21/1	3.00	4.00	21/5	3.00	9.00
22/8	1.50	4.40	21/4	3.80	9.65
22/3	5.00	4.50	22/1	5.10	10.20
23/2	5.08	5.08	22/6	3.00	11.50
21/2	3.00	5.50	23/1	5.00	13.00
22/5	6.00	5.50	22/7	3.00	14.00
21/0	3.00	6.00	21/6	3.00	16.00
22/0	3.00	7.00			
22/2	4.70	7.10			
21/8	4.80	7.50			
22/4	4.00	7.50			
23/0	6.10	7.50			

Other dimensions on request

Plating
55 = Gold flash (Standard)
66 = 10μ" Gold
77 = 15μ" Gold
88 = 30μ" Gold
99 = Tin

Duplex plating
95 = Tin/Gold flash
96 = Tin/10μ" Gold
97 = Tin/15μ" Gold
98 = Tin/30μ" Gold

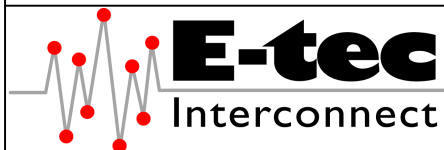


Recommended PCB SMT Layout
(PCB TOLERANCE ±0.05)



SPECIFICATIONS

Current Rating : 1A
Insulator resistance : 1000 MΩ min.
Contact Resistance : 20 mΩ max.
Dielectric Withstanding : AC 500V/Minute
Operating Temperature : -40° ~ +105°C
Processing Temperature : +250°C⁺⁰₋₅°C for 5 seconds
Insulator Material: Nylon-6T ,UL 94V-0
Color : Black
Contact Material: Brass
Plating: Gold, Tin or Duplex
*Duplex = Gold plated on contact area, Tin on solder area



UNIT mm	GENERAL TOLERANCE		DRAWN Lyndon Lin	DATE Mar 27 2008	DWG. NO. SP2-Hxx/x/11	SHEET 1/1	
	X.° ± 3°	.X° ±					
	SCALE Free	X. ±	.X0 ± 0.38	CHECK Lyndon Lin	DATE Mar 14 2012	Series NO.	REV. L
		XX. ±	.XX ± 0.25	APPROVE Selena Hong	DATE Mar 14 2012	SP2-xxx-Hxx/x-xx/11X	

1.27mm Pitch Board Spacer
-SMT- Dual Row