

### DESCRIPTION

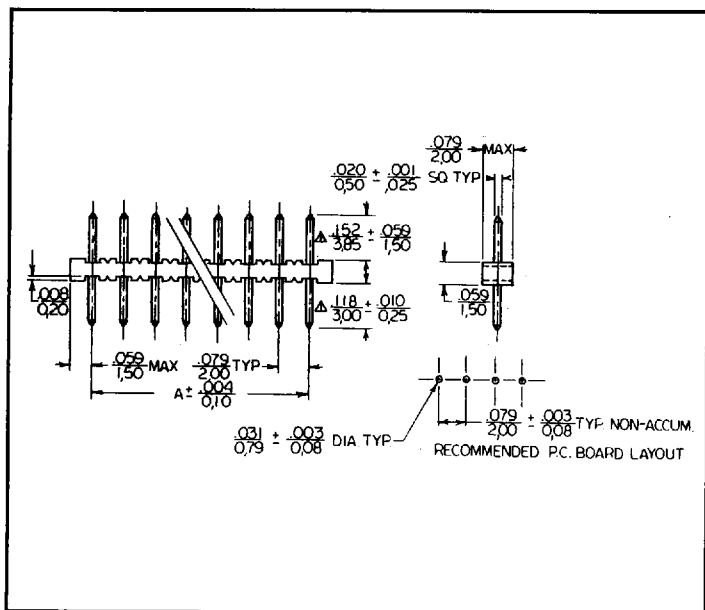
- 2mm (.079") spacing
- Single and Dual Row Offerings
- Three plating options
  - Tin
  - 15 microinches selective gold
  - 30 microinches selective gold

### SPECIFICATIONS

- Insulator is glass filled thermoplastic  
UL Rating 94VO
- Color: Black
- Contact material is phosphor bronze

Contacts are "post-plated", therefore there are no bare edges

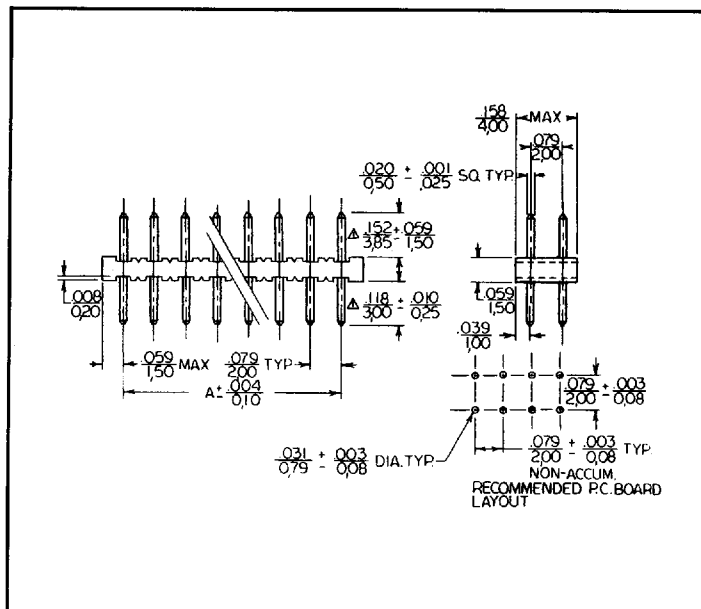
**0.5 mm (.020") Square, Single Row  
2 mm (.079") centers**



**1-36 POSITIONS**

A = No. of Positions  $\times \frac{.079}{2.00} - \frac{.079}{2.00}$

**0.5 mm (.020") Square, Dual Row  
2 mm (.079") centers**



Note: Drawings show dimensions in inches over millimeters

**2-72 POSITIONS**

### PART NUMBER

