



Micro Commercial Components

Micro Commercial Components
 20736 Marilla Street Chatsworth
 CA 91311
 Phone: (818) 701-4933
 Fax: (818) 701-4939

KBP005M THRU KBP10M

Features

- Glass Passivated Die Construction
- High Surge Current Capability
- Case Material: Molded Plastic. UL Flammability Classification Rating 94V-0
- Marking : type number
- UL Recognized File # E165989

Maximum Ratings

- Operating Temperature: -55°C to +150°C
- Storage Temperature: -55°C to +150°C

MCC Part Number	Maximum Recurrent Peak Reverse Voltage	Maximum RMS Voltage	Maximum DC Blocking Voltage
KBP005M	50V	35V	50V
KBP01M	100V	70V	100V
KBP02M	200V	140V	200V
KBP04M	400V	280V	400V
KBP06M	600V	420V	600V
KBP08M	800V	560V	800V
KBP10M	1000V	700V	1000V

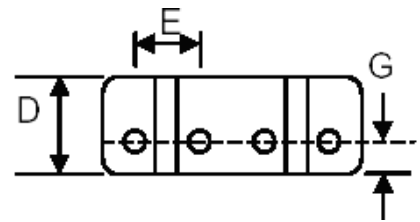
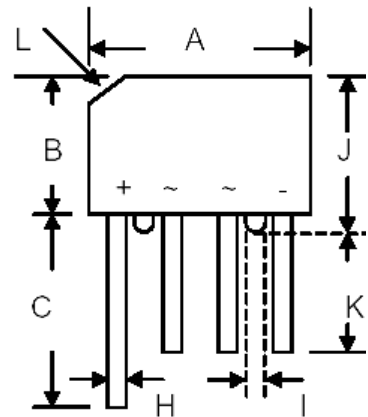
Electrical Characteristics @ 25°C Unless Otherwise Specified

Average Forward Current	$I_{F(AV)}$	1.5A	$T_a = 50^\circ\text{C}$ Note1
Peak Forward Surge Current	I_{FSM}	50A	8.3ms, half sine
Maximum Forward Voltage Drop Per Element	V_F	1.1V	$I_F = 1.5\text{A}$ per element; $T_J = 25^\circ\text{C}$
Maximum DC Reverse Current At Rated DC Blocking Voltage	I_R	10 μA 0.5mA	$T_a = 25^\circ\text{C}$ $T_a = 100^\circ\text{C}$
Typical Junction Capacitance per element	C_j	15PF	Measured at 1MHZ, VR=4V(DC)
Typical Thermal Resistance	Rthja	28 K/W	Note2

- Note: 1. Leads maintained at ambient temp. at a distance of 9.5mm from the case
 2. Mounted on PC board with 12mm² copper pad

1.5 Amp Glass Passivated Bridge Rectifier 50 to 1000 Volts

KBPM



DIM	DIMENSIONS			
	INCHES		MM	
	MIN	MAX	MIN	MAX
A	.559	.60	14.22	15.24
B	.42	.46	10.67	11.68
C	.60	---	15.2	---
D	.179	.20	4.57	5.08
E	.142	.161	3.60	4.10
G	.085	.105	2.16	2.67
H	.028	.034	0.71	0.86
I	.06	---	1.52	---
J	.46	.50	11.68	12.70
K	.50	---	12.7	---
L	3.2*45° Typ.		3.2*45° Typ.	

www.mccsemi.com

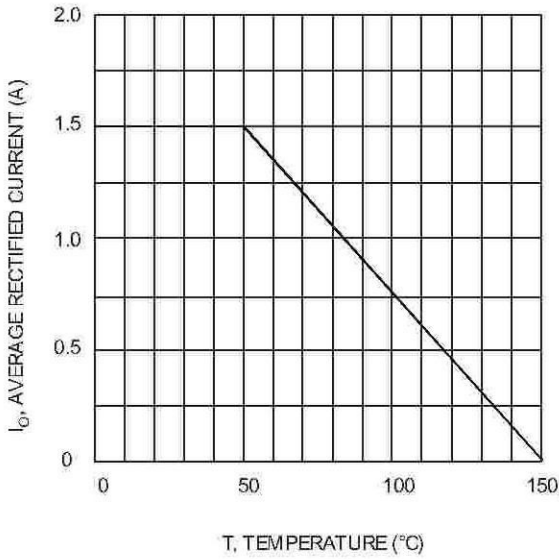


Fig. 1 Forward Current Derating Curve

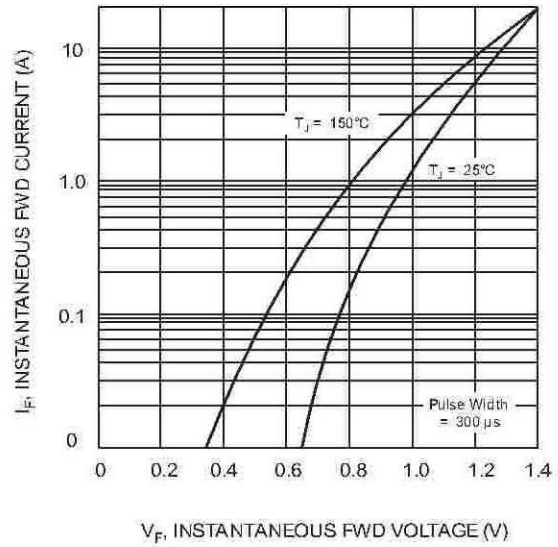


Fig. 2 Typical Fwd Characteristics

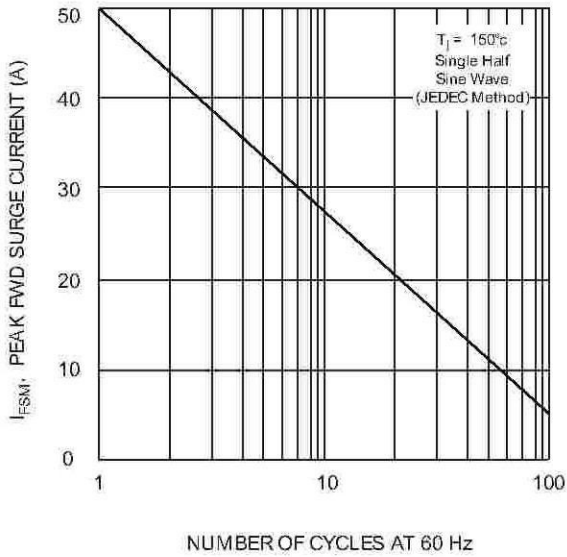


Fig. 3 Max Non-Repetitive Peak Fwd Surge Current

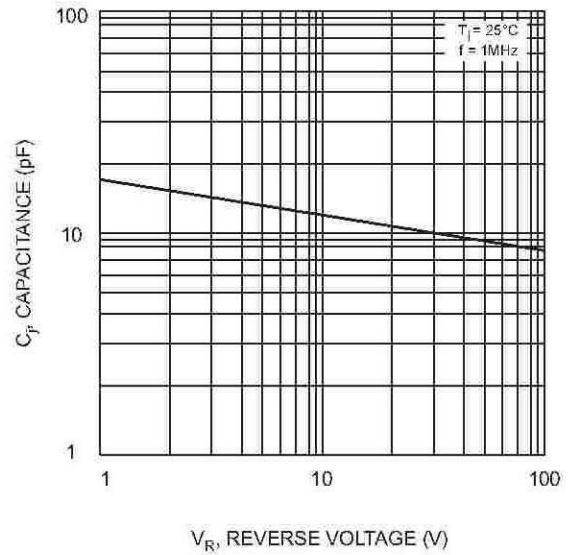


Fig. 4 Typical Junction Capacitance

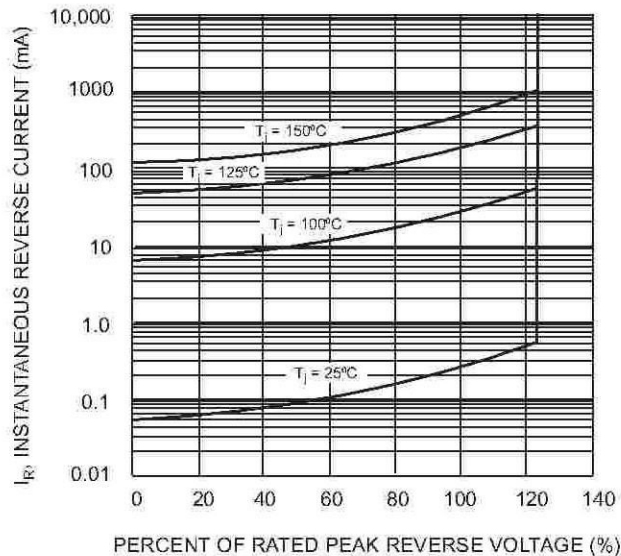


Fig. 5 Typical Reverse Characteristics



Micro Commercial Components

*****IMPORTANT NOTICE*****

Micro Commercial Components Corp. reserves the right to make changes without further notice to any product herein to make corrections, modifications, enhancements, improvements, or other changes. *Micro Commercial Components Corp.* does not assume any liability arising out of the application or use of any product described herein; neither does it convey any license under its patent rights, nor the rights of others. The user of products in such applications shall assume all risks of such use and will agree to hold *Micro Commercial Components Corp.* and all the companies whose products are represented on our website, harmless against all damages.

*****APPLICATIONS DISCLAIMER*****

Products offer by *Micro Commercial Components Corp.* are not intended for use in Medical, Aerospace or Military Applications.