

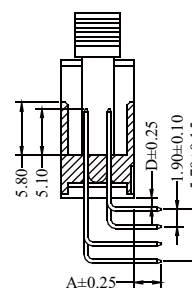
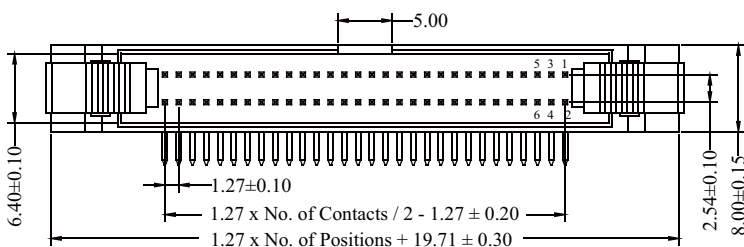
Ejector Header 1.27x2.54mm Right Angle / Straight Type

Specifications

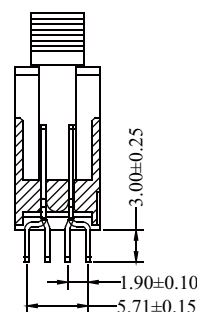
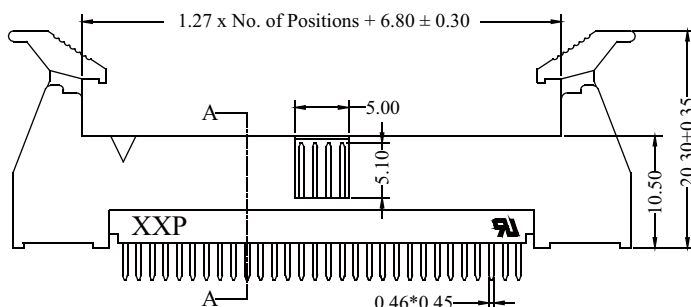
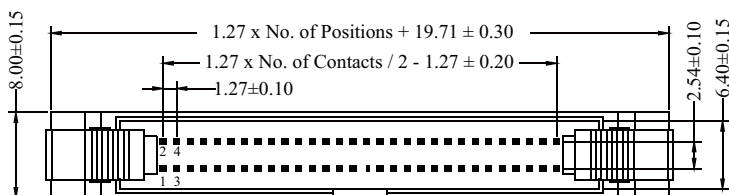
Current Rate: 1 AMP
 Insulation Resistance: 1000MΩ Min.
 Contact Resistance: 20mΩ Max.
 Dielectric Voltage: 500V AC for one minute
 Operation Temperature: -40°C to +105°C

Material

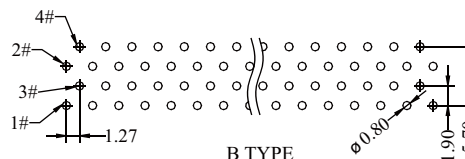
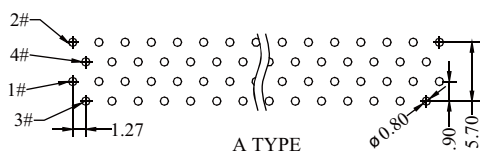
Insulator: Polyester, UL 94V-0
 ©Standard: Nylon 6T
 Terminal: Copper Alloy
 Plating: Gold Plated



SECTION A-A



SECTION A-A



Recommended P.C.B Layout(Top Side)
 (PCB BOARD TOLERANCE±0.05)

ORDER INFORMATION

