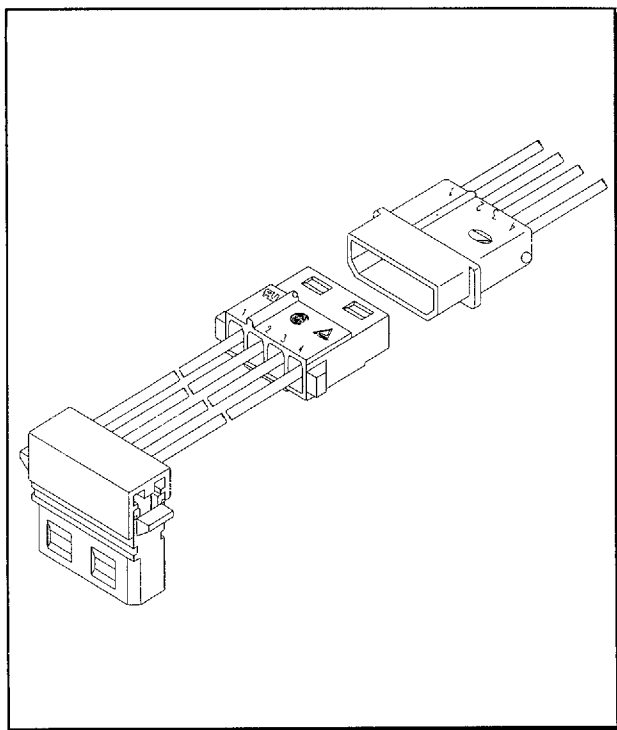


## Features

- ◆ Can be used Leoco 5213 and 5214 crimp terminal
- ◆ Material: Nylon 6/6 UL94V-2
- ◆ 4 circuits
- ◆ Natural color



## Specifications

- ◆ Current rating: 5A AC
- ◆ Voltage rating: 250V DC
- ◆ Temperature rating: -25°C ~ +105°C
- ◆ Contact resistance:
  - Initial: 20mΩ max.
  - After environmental test: 40mΩ max.
- ◆ Insulation resistance:
  - Initial: 1,000MΩ min.
  - After humidity and thermal shock test: 500MΩ min
- ◆ Withstanding voltage: 1,500V AC /minute
- ◆ Applicable wire: AWG 18 to 24

## Standards

- Recognized No. E82349(5200)
- Certified No. LR65731
- Licensed No. R9052134(5200)

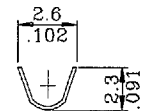
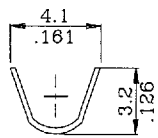
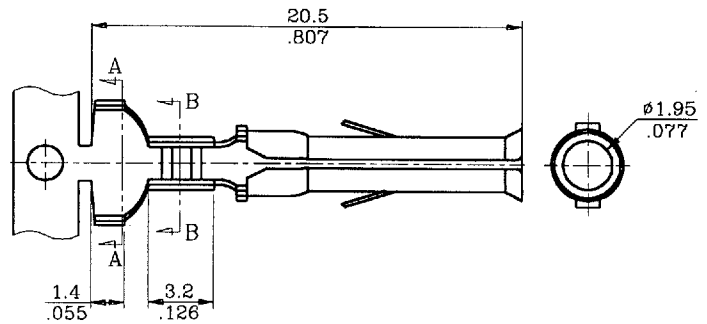
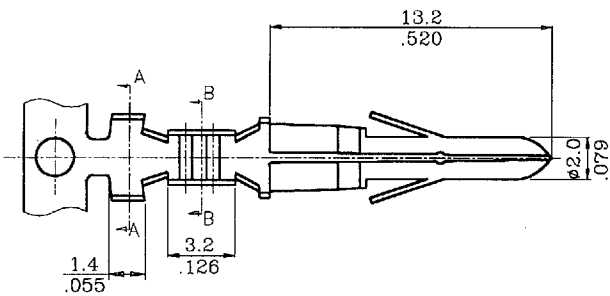
# 6703/6704 2.00mm(.079") Diameter Crimp Terminal



Unit :  $\frac{\text{mm}}{\text{inch}}$

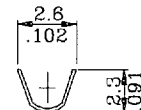
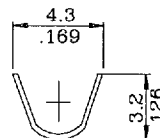
6703TCB0000

6704TCB0000



SECTION A-A

SECTION B-B



SECTION A-A

SECTION B-B

## Specifications & Ordering Information:

Part No.	Wire Ranges	Contact	Material	Insulation Diameter	Reel Q'ty	Application	Tooling
6703TCB0000	AWG 20-24	Male	Brass, Tin Plated	2.48(.098) MAX	5,000PCS	CCD-6703R01	
6704TCB0000	AWG 20-24	Female	Brass, Tin Plated	2.48(.098) MAX	5,000PCS	CCD-6704R01	

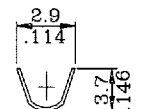
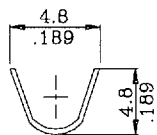
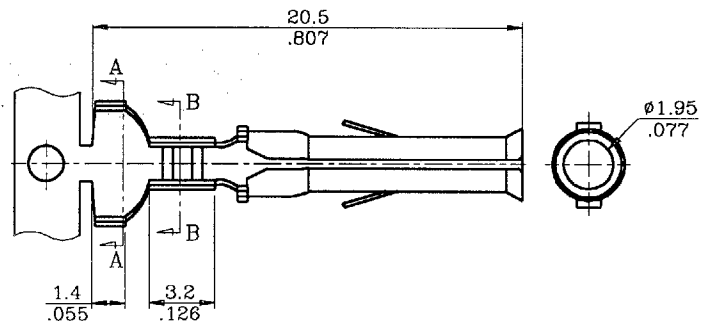
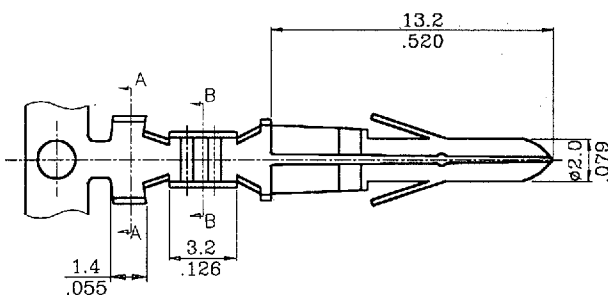
# 6713/6714 2.00mm(.079") Diameter Crimp Terminal



Unit :  $\frac{\text{mm}}{\text{inch}}$

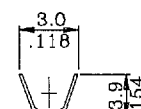
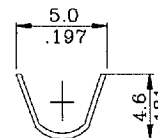
6713TCB0000

6714TCB0000



SECTION A-A

SECTION B-B



SECTION A-A

SECTION B-B

## Specifications & Ordering Information:

Part No.	Wire Ranges	Contact	Material	Insulation Diameter	Reel Q'ty	Application	Tooling
6713TCB0000	AWG 16-20	Male	Brass, Tin Plated	3.50(.138) MAX	3,500PCS	CCD-6713R01	
6714TCB0000	AWG 16-20	Female	Brass, Tin Plated	3.30(.130) MAX	3,500PCS	CCD-6714R01	