

PRODUCT DESCRIPTION

HOLMBERG® D-Subminiature connectors are all plastic or metal-shielded for printed circuit board applications in the telecommunications, data processing, instrumentation, industrial control and other industries where low cost and high performance are required. They are fully intermatable with all D-Subminiature connectors – including crimp, solder and insulation displacement types.

The connector housing is molded in black glass-filled polyester, UL rates 94V-0. Contacts are high strength copper alloy and are selectively plated-gold-over-nickel in the contact area with solder plating on the tails. This assures contact reliability, superior solderability and long shelf life at a lower cost.

The metal shielded connector is designed specifically for mating with EMI-RFI qualified cables, the H4 metal shell connectors incorporate a grounding bulkhead mount, or can be supplied with a grounding strap for grounding to the topside, underside or both, of PC boards. The bright tin-plated steel metal shell provides a cost-effective medium for grounding – which can also be accomplished through the mounting hardware.

Available in 9, 15, 25 and 37 positions, the unique design of the HOLMBERG® D-Subminiature connectors ensures excellent contact retention and precisely located, rigid contact tails for easy assembly.

DESIGN FEATURES

LARGE LEAD-IN PROVIDES EASY MATING. Allows male plug to be off true position as much as $\pm .040$ " and still mate. Corner radii around "D" outline also aids pin alignment. **SMOOTH LEAD ON TIP OF PINS.** Allows easy mating and low insertion force with mating receptacle.

RIGID TAILS NEED NO SUPPORT. Right angle tails have channel cross-section for exceptional strength and rigidity. They are precisely positioned for easy mounting. Since no plastic inserts or spacers are required for alignment or support, nothing obstructs cleaning after soldering.

60/40 TIN/LEAD SELECTIVE PLATING ON THE TAIL ENHANCES SOLDERABILITY. Nickel-plated tail surface above the board forms effective solder mask. Large cross-section of the above board tail portion provides good heat sink to further control solder application.

METAL SHELL provides electrical ground path continuity and magnetic shielding, from the mating receptacle metal shell through the grounding bumps on the male shell. The steel shell with bright tin-plating also provides for grounding through the factory installed mounting hardware.

PERFORMANCE CHARACTERISTICS

Operating voltage:	600VDC (sea level)
Current rating:	5 Amperes
Operating temperature:	-55° C to +125° C
Contact resistance:	10 milliohms max @ rated current
Insulation resistance:	5000 megohms minimum
Dielectric withstanding voltage:	1000 VAC minimum
Durability:	up to 500 insertions and withdrawals without degradation of performance, dependent upon contact plating thickness selected

MATERIALS

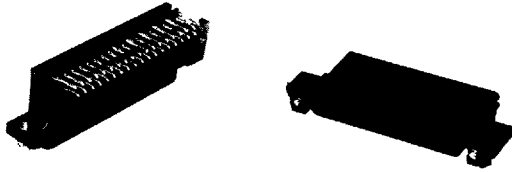
Insulator body:	Glass filled polyester, UL rating 94V-0, color-black
Contact:	High yield strength copper alloy
Metal Shell:	Steel, bright tin plate

UL Recognized and CSA Certified

PART NUMBER DESCRIPTION AND ORDERING INFORMATION

	H2	R	25	RA	29	A	P	M
SERIES DESIGNATOR	<ul style="list-style-type: none"> H2 — All Plastic H3 — All Plastic H4 — Metal Shell H5 — Metal Shell H9 — Metal Shell — High Profile HD Series, Metal Shell High Density 							
CONTACT TYPE	<ul style="list-style-type: none"> R — Female Receptacle M — Male Pins 							
NUMBER OF CONTACTS	<ul style="list-style-type: none"> 09, 15, 25, 37 							
PC TERMINATION TYPE	<ul style="list-style-type: none"> RA — Right Angle ST — Straight Tail 							
CONTACT PLATING	<ul style="list-style-type: none"> 29 — Selective .000030" gold over .000050" nickel in the contact area with .0001" to .0003" 60/40 tin/lead on the contact tails Other platings available (consult factory) 							
MOUNTING STYLE	<ul style="list-style-type: none"> Right Angle <ul style="list-style-type: none"> A — Basic Connector with Thru Holes B — Round Standoff, 4-40 Thread C — Flush insert, 4-40 Thread D — Plastic Standoff, with 4-40 Threaded Insert F — Locking Post J — Latch with Standoff and 4-40 Threaded Insert (RS 449 & 232) Straight Tail <ul style="list-style-type: none"> A — Basic Connector with Thru Holes B — Round Standoff, # 4-40 Thread C — Flush Insert, # 4-40 Thread D — Flush board mounting with Thru Holes J — Latch with Standoff and # 4-40 Threaded insert (for RS 449 and RS 232 cable assemblies) 							
PCB OPTIONS	<ul style="list-style-type: none"> F — Snap Latch/ 062 PCB S — Metal Snap Latch/ 062 PCB See page 45 for right angle PCB options 							
SPECIAL MODIFICATIONS	<ul style="list-style-type: none"> M30 — Metric Thread Size M3 M33 — Metric Thread with inside ground strap M35 — Metric Thread with outside/inside ground strap M43 — Inside Ground Strap M44 — Solder Ground M45 — Outside/Inside Ground Strap M50 — Back Board Mounting Hole M53 — Back Board Mounting Hole with inside ground strap M55 — Back Board Mounting Hole with outside/inside ground strap M60 — Back Board Mounting Hole M63 — Metric Thread with inside ground strap Back Mounting M65 — Metric Thread with outside/inside ground strap Back Board Mounting See page 58 for right angle modification options Consult factory for grounding options on straight tail connectors 							

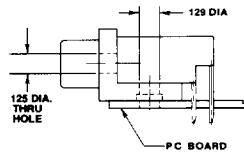
H2 SERIES 9, 15, 25 AND 37 POSITIONS ALL PLASTIC RIGHT ANGLE FEMALE RECEPTACLES FOR PRINTED CIRCUIT BOARD MOUNTING



MOUNTING STYLES

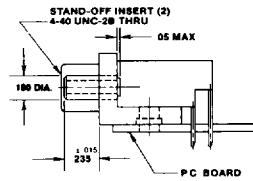
STYLE A

This configuration is the basic connector with mounting holes only. It comes with no permanent hardware, but a separate hardware kit (part number 98039) is available



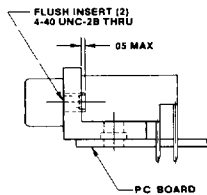
STYLE B

This configuration includes a #4-40 threaded standoff which provides 6 in-lb torque retention, for mating to RS 232 cable assemblies. One-piece construction of the factory-installed insert eliminates need for separate hardware



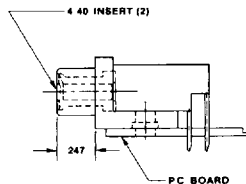
STYLE C

Style C mounting provides a flush, #4-40 threaded insert of nickel-plated brass. The insert has rows of knurling that capture it in the plastic, preventing rotation or push-out. It provides 6 in-lb torque retention.

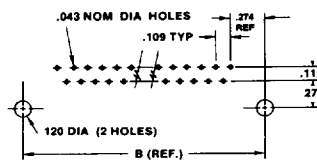
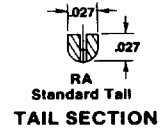
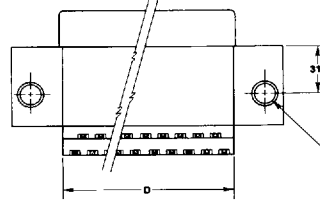
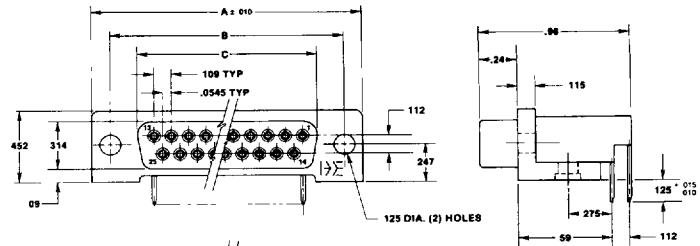


STYLE D

Unique Style D configuration has molded-in plastic standoff with factory-installed nickel-plated brass hex-headed, #4-40 threaded insert. Specifically designed for RS 232 cable assemblies. Insert is threaded all the way through. Hexagonal shape positively locks insert in place to provide 6 in-lb torque retention and eliminate rotation. Style D is functionally equivalent to Style B



DIMENSIONS (Shown In Inches)



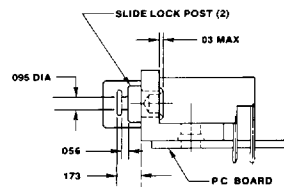
NOTE:

1. Receptacle position numbers begin top row, RIGHT to LEFT, continue bottom row, RIGHT to LEFT.
2. Maximum tail will fit .038" diameter gauge hole.
3. Maximum recommended board thickness is .093".

NUMBER OF CONTACTS	A	B	C	D
9	1.224	.984	.646	.624
15	1.552	1.312	.974	.952
25	2.092	1.852	1.514	1.492
37	2.740	2.500	2.162	2.140

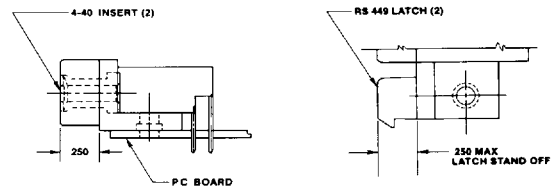
STYLE F

Style F has brass locking posts designed to mate with AMP's slide-latch clip assembly, Positronic's slide-lock assembly and equivalent connectors

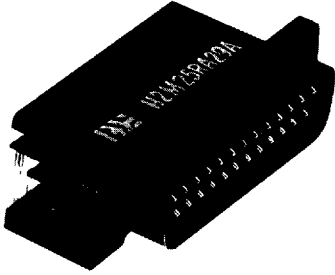


STYLE J

Style J provides a unique connector which mates to both RS 232 and RS 449 cable assemblies



H2 SERIES 9, 15, 25 AND 37 POSITIONS ALL PLASTIC RIGHT ANGLE MALE PINS FOR PRINTED CIRCUIT BOARD MOUNTING



- NOTE:**
1. Pin position numbers begin top row, LEFT to RIGHT, continue bottom row, LEFT to RIGHT.
 2. Maximum tail will fit .038" diameter gauge hole.
 3. Maximum recommended board thickness is .093".

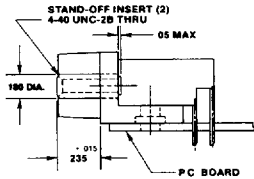
MOUNTING STYLES

STYLE A

This configuration is the basic connector with mounting holes only. It comes with no permanent hardware, but a separate hardware kit (part number 98039) is available. Style A is a new design which is produced in a cammed mold, eliminating top and bottom grooves around board mounting holes. This style is easier to rivet to the board because the rivet head is completely supported by solid plastic. It is also recommended for installations having board traces running under the connector — since there are no sharp edges to damage traces.

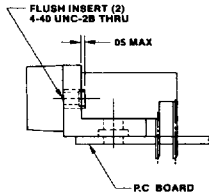
STYLE B

This configuration includes a #4-40 threaded standoff which provides 6 in-lb torque retention, for mating to RS 232 cable assemblies. One-piece construction of the factory-installed insert eliminates need for separate hardware.



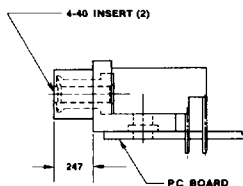
STYLE C

Style C mounting provides a flush, molded-in, #4-40 threaded insert of nickel-plated brass. The insert has rows of knurling that capture it in the plastic, preventing rotation or push-out.



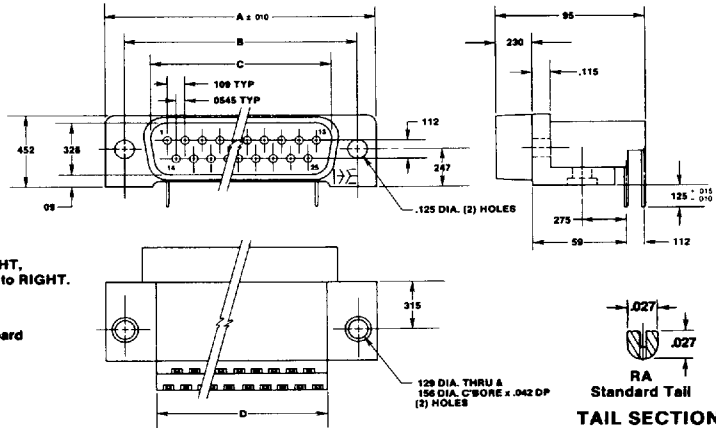
STYLE D

Unique Style D configuration has molded-in plastic standoff with factory-installed tin-plated brass hex-headed, #4-40 threaded insert. Specifically designed for RS 232 cable assemblies. Insert is threaded all the way through. Hexagonal shape positively locks insert in place providing 6 in-lb torque retention. Style D is functionally equivalent to Style B.

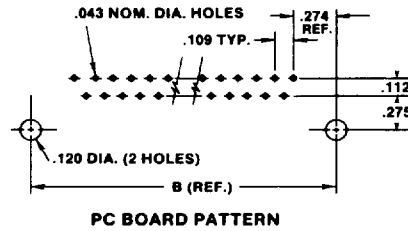


DIMENSIONS (Shown In Inches)

MOUNTING STYLE A

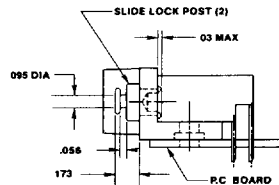


NUMBER OF CONTACTS	A	B	C	D
9	1.224	.984	.666	.624
15	1.552	1.312	.994	.952
25	2.092	1.852	1.534	1.492
37	2.740	2.500	2.183	2.140



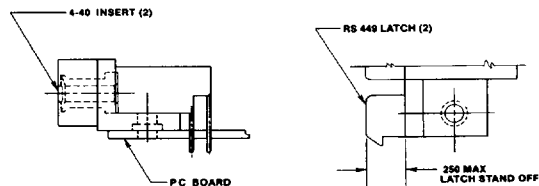
STYLE F

This configuration has brass locking posts designed to mate with AMP's slide-latch assembly, Positronics' slide-lock assembly and equivalent connectors.



STYLE J

Style J provides a unique connector which mates to both RS 232 and RS 449 cable assemblies.

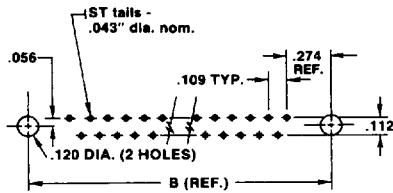


**H2 SERIES
9, 15, 25 AND 37 POSITIONS
STRAIGHT TAIL ALL PLASTIC
MALE PINS FOR
PRINTED CIRCUIT BOARD MOUNTING**



DIMENSIONS (Shown In Inches)

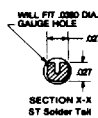
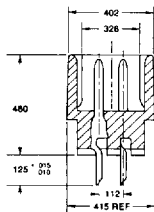
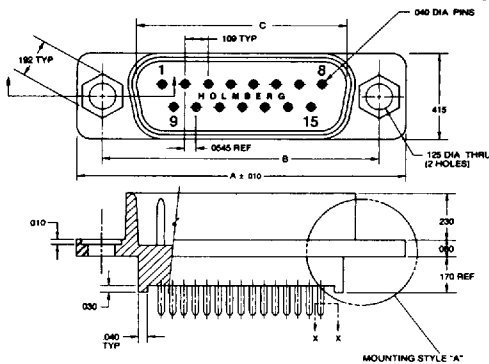
NUMBER OF CONTACTS	A	B	C
9	1.224	.984	.666
15	1.552	1.312	.994
25	2.092	1.852	1.534
37	2.740	2.500	2.183



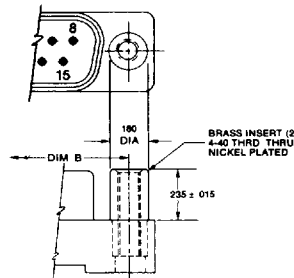
PC BOARD PATTERN

DIMENSIONS (Shown In Inches)

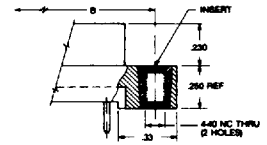
MOUNTING STYLE A



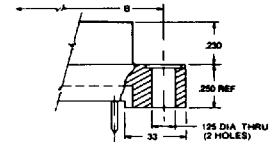
MOUNTING STYLE B



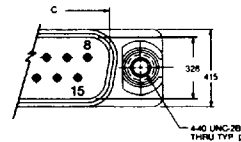
MOUNTING STYLE C



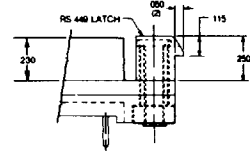
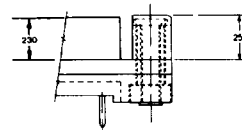
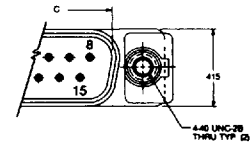
MOUNTING STYLE D



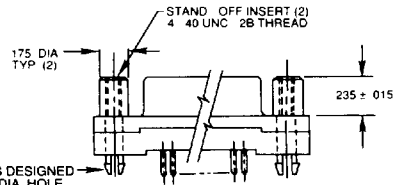
MOUNTING STYLE H



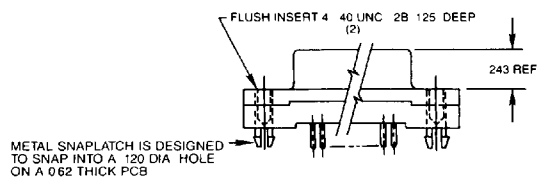
MOUNTING STYLE J



MOUNTING STYLE BS

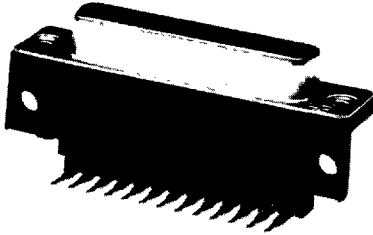


MOUNTING STYLE CS

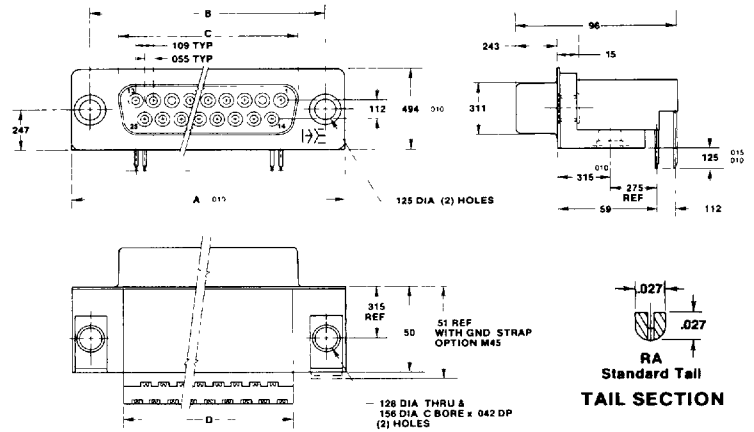


C

H4 SERIES 9, 15, 25 AND 37 POSITIONS METAL SHELL RIGHT ANGLE FEMALE RECEPTACLES FOR PRINTED CIRCUIT BOARD MOUNTING



DIMENSIONS (Shown in Inches)

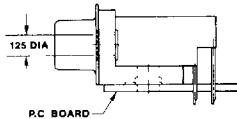


NUMBER OF CONTACTS	A	B	C	D
9	1.224	.984	646	624
15	1.552	1.312	974	.952
25	2.092	1.852	1.514	1.492
37	2.740	2.500	2.162	2.140

MOUNTING STYLES

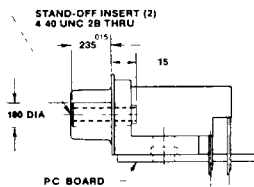
STYLE A

This configuration is the basic connector with mounting holes only. It comes with no permanent hardware, but a separate hardware kit (part number 98039-01) is available. For grounding to the PC board there are outside and inside grounding straps available, factory installed (see part number description for ordering). Grounding straps are copper alloy tin plate.



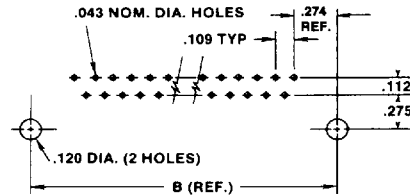
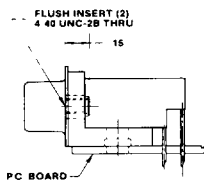
STYLE B

Style B designates a round standoff which has #4-40 threads. This provides 6 in-lb torque retention, for mating to RS 232 cable assemblies. One-piece construction of the factory installed insert eliminates need for separate hardware. Also, outside or inside grounding straps are available, factory installed, for grounding to the PC board (see part number description for ordering).



STYLE C

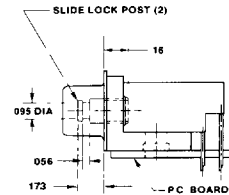
Style C mounting provides a flush #4-40 threaded insert with 6 in-lb torque retention for bulkhead mounting. The factory installed inserts eliminates the need to install jamb nuts in back of the panel. Also, available with inside or outside grounding straps.



PC BOARD PATTERN

STYLE F

Style F designates locking posts. This configuration has factory installed brass locking posts, designed to mate with AMP's slide-lock assembly and equivalent connectors. Also, available with outside or inside grounding straps.



STYLE J

Style J provides a unique connector which mates to both RS 232 and RS 449 cable assemblies.

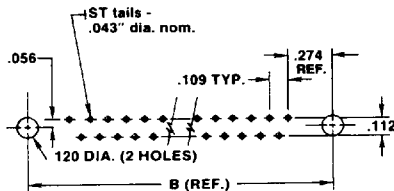


**H4 SERIES
9, 15, 25 AND 37 POSITIONS
STRAIGHT TAIL METAL SHELL
FEMALE RECEPTACLES FOR
PRINTED CIRCUIT BOARD MOUNTING**



DIMENSIONS (Shown In Inches)

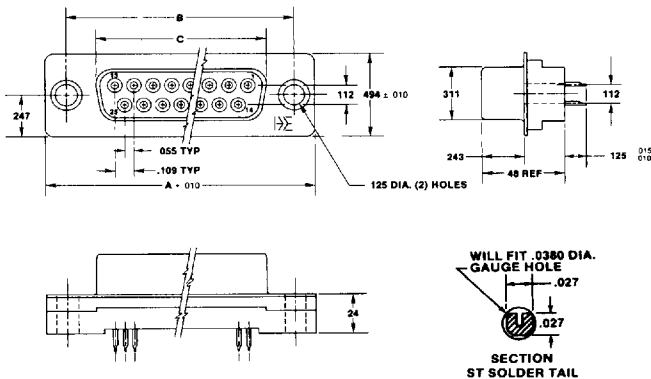
NUMBER OF CONTACTS	A	B	C
9	1.224	.984	.646
15	1.552	1.312	.974
25	2.092	1.852	1.514
37	2.740	2.500	2.162



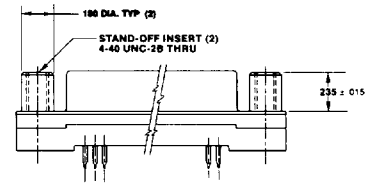
PC BOARD PATTERN

DIMENSIONS (Shown In Inches)

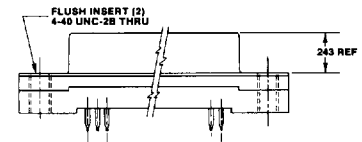
MOUNTING STYLE A



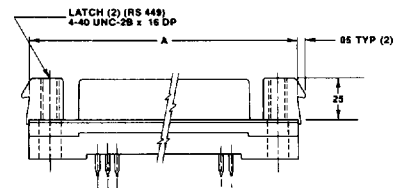
MOUNTING STYLE B



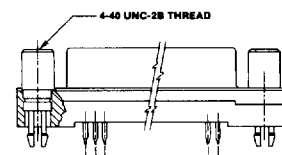
MOUNTING STYLE C



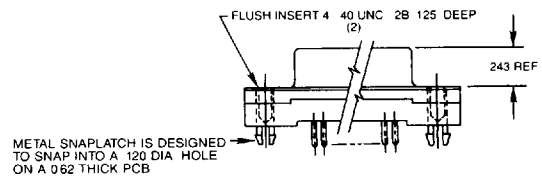
MOUNTING STYLE J



MOUNTING STYLE BS

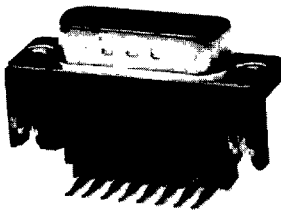


MOUNTING STYLE CS

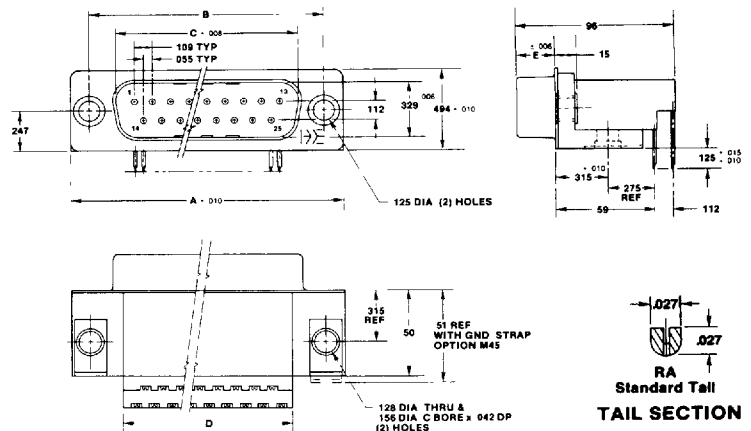


C

H4 SERIES 9, 15, 25 AND 37 POSITIONS METAL SHELL RIGHT ANGLE MALE PINS FOR PRINTED CIRCUIT BOARD MOUNTING



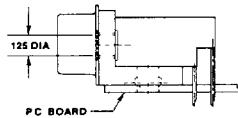
DIMENSIONS (Shown In Inches)



MOUNTING STYLES

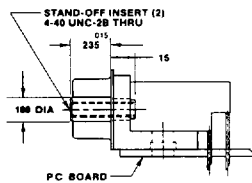
STYLE A

This configuration is the basic connector with mounting holes only. It comes with no permanent hardware, but a separate hardware kit (part number 98039-01) is available. For grounding to the PC board there are outside and inside grounding straps available, factory installed (see part number description for ordering). Grounding straps are copper alloy tin plate.



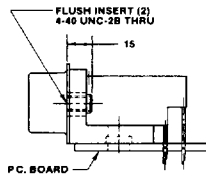
STYLE B

Style B designates a round standoff which has #4-40 threads. This provides 6 in-lb torque retention, for mating to R S. 232 cable assemblies. One-piece construction of the factory installed insert eliminates need for separate hardware. Also, outside or inside grounding straps are available, factory installed, for grounding to the PC board (see part number description for ordering).

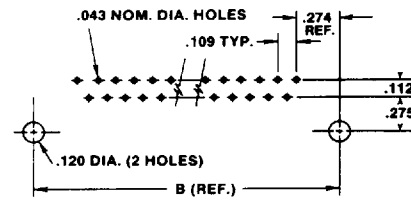


STYLE C

Style C mounting provides a flush #4-40 threaded insert with 6 in-lb torque retention for bulkhead mounting. The factory installed inserts eliminates the need to install jamb nuts in back of the panel. Also, available with inside or outside grounding straps.



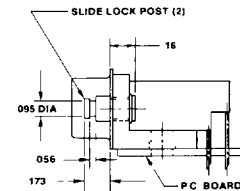
NUMBER OF CONTACTS	A	B	C	D	E
9	1.224	.984	.666	.624	.235
15	1.552	1.312	.994	.952	.235
25	2.092	1.852	1.534	1.492	.230
37	2.740	2.500	2.183	2.140	.230



PC BOARD PATTERN

STYLE F

Style F designates locking posts. This configuration has factory installed brass locking posts, designed to mate with AMP's slide-lock assembly and equivalent connectors. Also, available with outside or inside grounding straps.

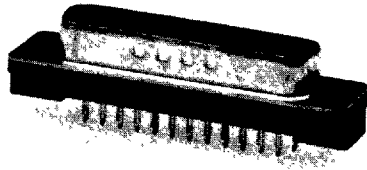


STYLE J

Style J provides a unique connector which mates to both RS 232 and RS 449 cable assemblies.

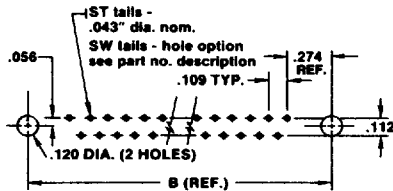


**H4 SERIES
9, 15, 25 AND 37 POSITIONS
STRAIGHT TAIL METAL SHELL
MALE PINS FOR
PRINTED CIRCUIT BOARD MOUNTING**



DIMENSIONS (Shown In Inches)

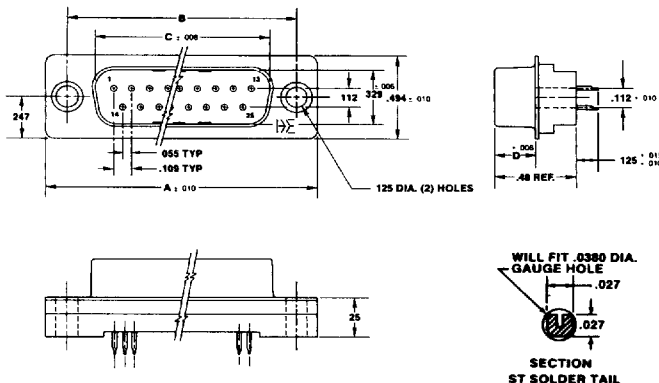
NUMBER OF CONTACTS	A	B	C	D
9	1.224	.984	.666	.235
15	1.552	1.312	.994	.235
25	2.092	1.852	1.534	.230
37	2.740	2.500	2.182	.230



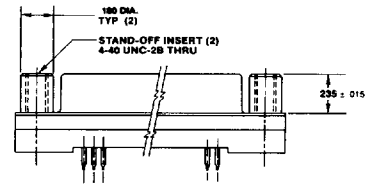
PC BOARD PATTERN

DIMENSIONS (Shown In Inches)

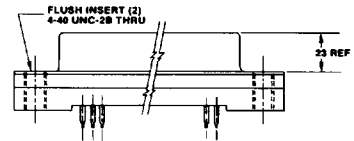
MOUNTING STYLE A



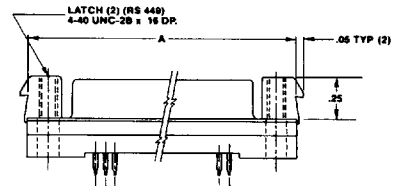
MOUNTING STYLE B



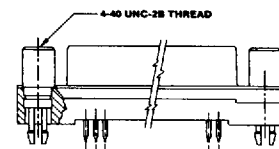
MOUNTING STYLE C



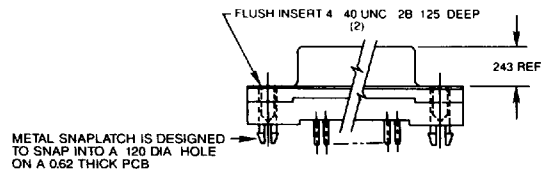
MOUNTING STYLE J



MOUNTING STYLE BS

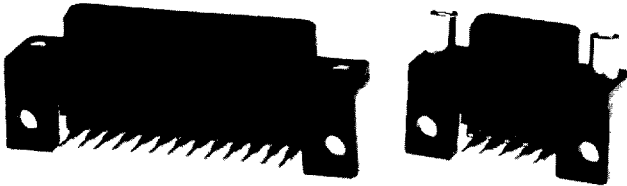


MOUNTING STYLE CS



C

H3 SERIES, .318 FOOTPRINT
9, 15, 25 AND 37 POSITIONS
ALL PLASTIC RIGHT ANGLE
FEMALE RECEPTACLES FOR
PRINTED CIRCUIT BOARD MOUNTING



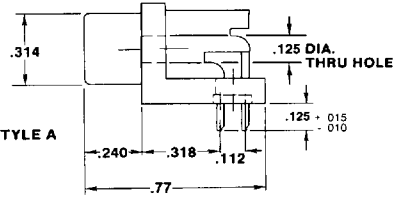
DIMENSIONS (Shown In Inches)

NUMBER OF CONTACTS	A	B	C	D
9	1.224	.984	.646	.624
15	1.552	1.312	.974	.952
25	2.092	1.852	1.514	1.492
37	2.740	2.500	2.162	2.140

MOUNTING STYLES

STYLE A

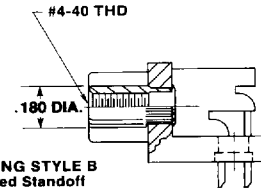
This configuration is the basic connector with mounting holes only. It comes with no permanent hardware but a separate hardware kit (part number 98039-01) is available.



MOUNTING STYLE A

STYLE B

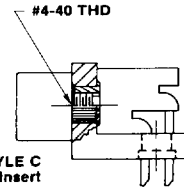
This configuration includes a #4-40 threaded standoff which provides 6 in.-lb torque retention, for mating to RS 232 cable assemblies. One-piece construction of the factory-installed insert eliminates need for separate hardware.



MOUNTING STYLE B
 Threaded Standoff

STYLE C

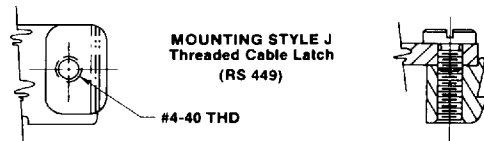
Style C mounting provides a flush #4-40 threaded insert. The insert has rows of knurling that capture it in the plastic, preventing rotation or push-out.



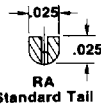
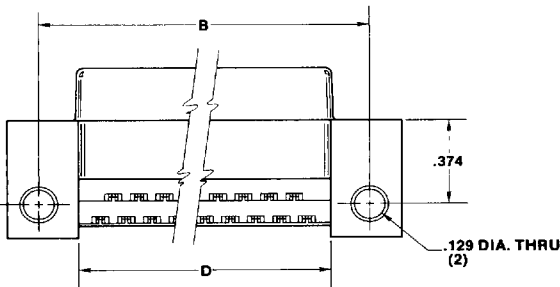
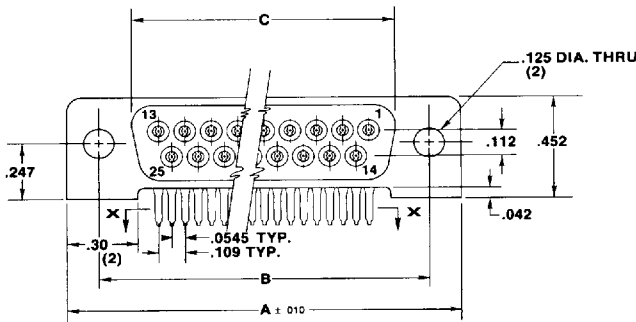
MOUNTING STYLE C
 Flush Threaded Insert

STYLE J

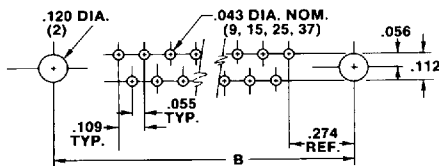
Style J provides a unique connector which mates to both RS 232 and RS 449 cable assemblies.



MOUNTING STYLE J
 Threaded Cable Latch
 (RS 449)

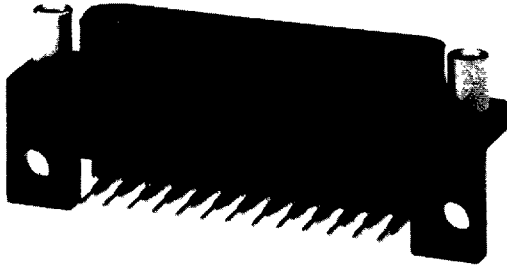


TAIL SECTION (X-X)



PC BOARD HOLE PATTERN

H3 SERIES, .318 FOOTPRINT 9, 15, 25 AND 37 POSITIONS ALL PLASTIC RIGHT ANGLE MALE PINS FOR PRINTED CIRCUIT BOARD MOUNTING



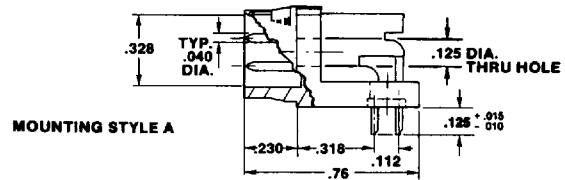
DIMENSIONS (Shown in Inches)

NUMBER OF CONTACTS	A	B	C	D
9	1.224	.984	.666	.624
15	1.552	1.312	.994	.952
25	2.092	1.852	1.534	1.492
37	2.740	2.500	2.183	2.140

MOUNTING STYLES

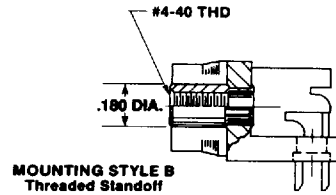
STYLE A

This configuration is the basic connector with mounting holes only. It comes with no permanent hardware, but a separate hardware kit (part number 98039-01) is available.



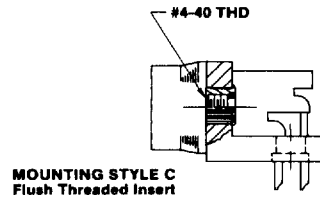
STYLE B

This configuration includes a #4-40 threaded standoff which provides 6 in-lb torque retention, for mating to RS 232 cable assemblies. One-piece construction of the factory-installed insert eliminates need for separate hardware.



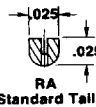
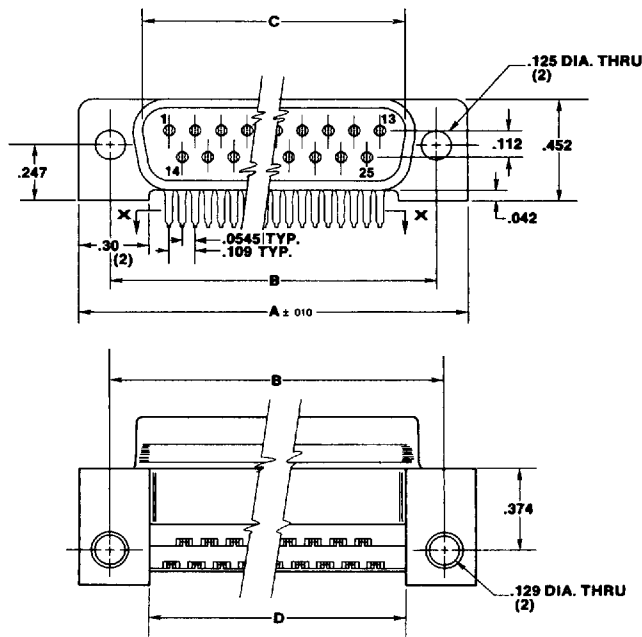
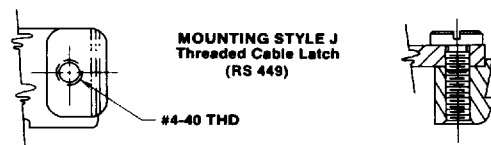
STYLE C

Style C mounting provides a flush, #4-40 threaded insert. The insert has rows of knurling that capture it in the plastic, preventing rotation or push-out.

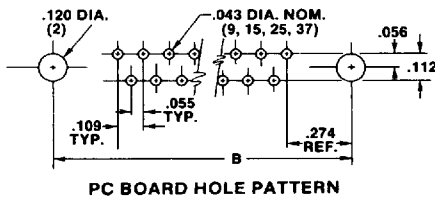


STYLE J

Style J provides a unique connector which mates to both RS 232 and RS 449 cable assemblies.



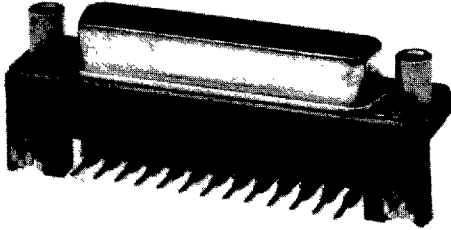
TAIL SECTION (X-X)



PC BOARD HOLE PATTERN

C

H5 SERIES, .318 FOOTPRINT 9, 15, 25 AND 37 POSITIONS METAL SHELL RIGHT ANGLE FEMALE RECEPTACLES FOR PRINTED CIRCUIT BOARD MOUNTING



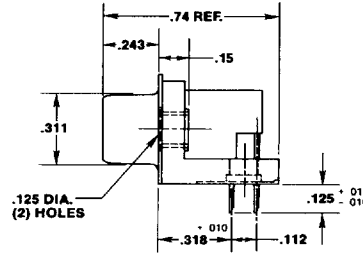
DIMENSIONS (Shown in Inches)

NUMBER OF CONTACTS	A	B	C	D
9	1.224	.984	.646	.624
15	1.552	1.312	.974	.952
25	2.092	1.852	1.514	1.492
37	2.740	2.500	2.162	2.140

MOUNTING STYLES

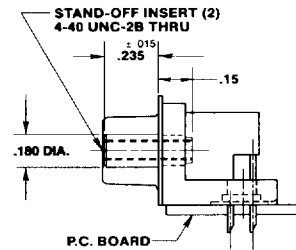
STYLE A

This configuration is the basic connector with mounting holes only. It comes with no permanent hardware, but a separate hardware kit (part number 98039-01) is available.



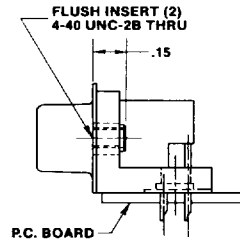
STYLE B

Style B designates a round standoff which has #4-40 threads. This provides 6 in-lb torque retention, for mating to RS 232 cable assemblies. One-piece construction of the factory installed insert eliminates need for separate hardware. Also, outside or inside grounding straps are available, factory installed, for grounding to the P.C. board (see part number description for ordering).



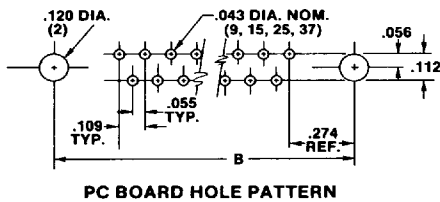
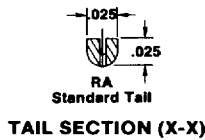
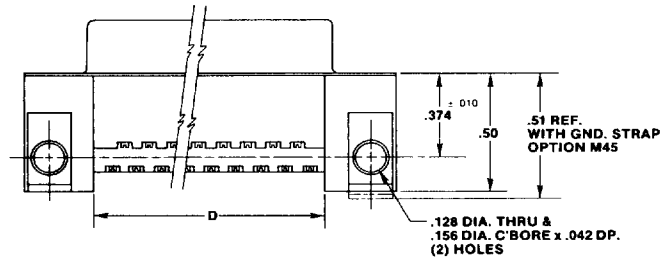
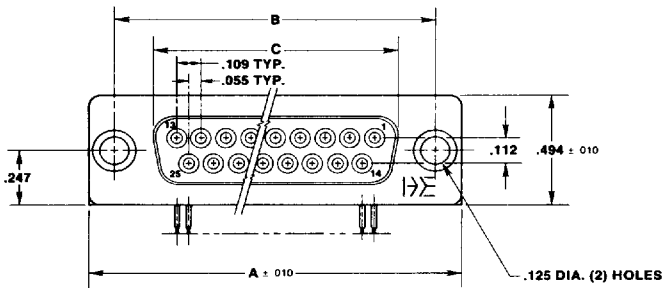
STYLE C

Style C mounting provides a flush #4-40 threaded insert with 6 in-lb torque retention for bulkhead mounting. The factory installed inserts eliminates the need to install jamb nuts in back of the panel. Also, available with inside or outside grounding straps.



STYLE J

Style J provides a unique connector which mates to both RS 232 and RS 449 cable assemblies.

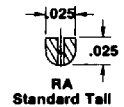
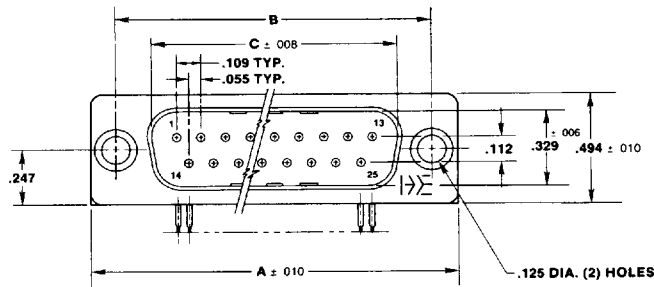


**H5 SERIES, .318 FOOTPRINT
9, 15, 25 AND 37 POSITIONS
METAL SHELL RIGHT ANGLE
MALE PINS FOR
PRINTED CIRCUIT BOARD MOUNTING**

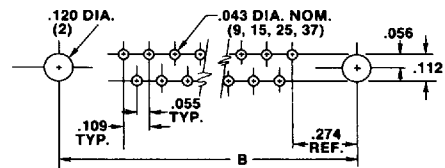
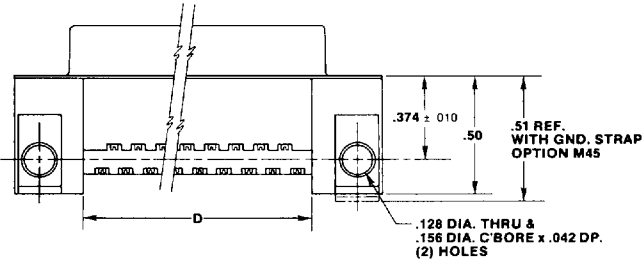
DIMENSIONS (Shown In Inches)

NUMBER OF CONTACTS	A	B	C	D	E*
9	1 224	984	666	624	235
15	1 552	1 312	.994	952	235
25	2 092	1 852	1 534	1 492	230
37	2 740	2 500	2 183	2 140	.230

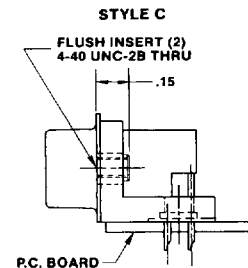
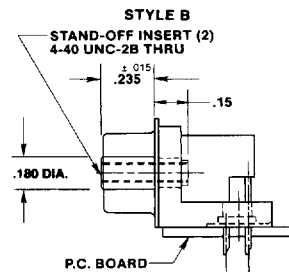
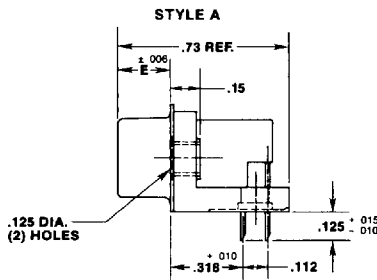
*E Dimension — See pg 56



TAIL SECTION (X-X)



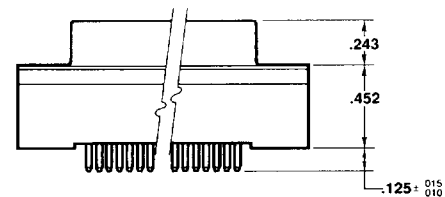
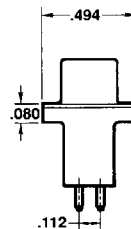
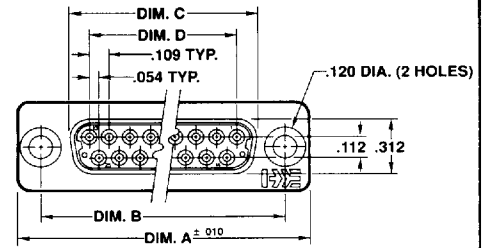
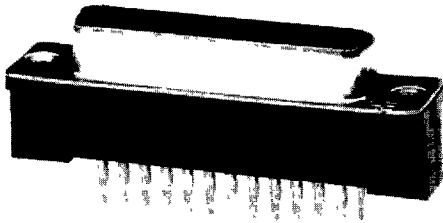
PC BOARD HOLE PATTERN



MOUNTING STYLE J
Threaded Cable Latch
(RS 449)

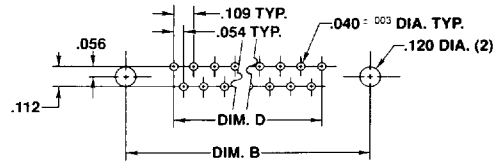
C

H9 SERIES RECEPTACLE
9, 15, 25 and 37 POSITIONS
HIGH PROFILE STRAIGHT TAIL
METAL SHELL
FEMALE RECEPTACLES FOR
PRINTED CIRCUIT BOARD MOUNTING

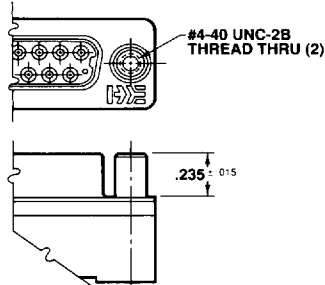


DIMENSIONS (Shown In Inches)

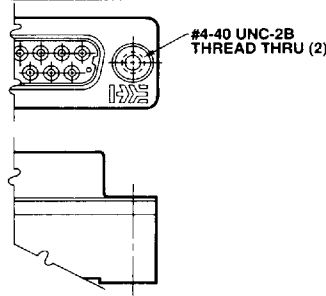
NUMBER OF CONTACTS	A	B	C	D
9	1 224	984	646	436
15	1 552	1 312	974	763
25	2 092	1 852	1 514	1 308
37	2 740	2 500	2 162	1 962



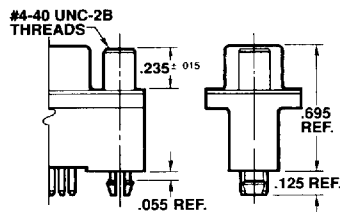
MOUNTING STYLE B



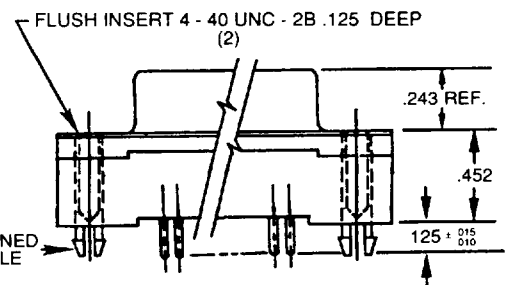
MOUNTING STYLE C



MOUNTING STYLE BS

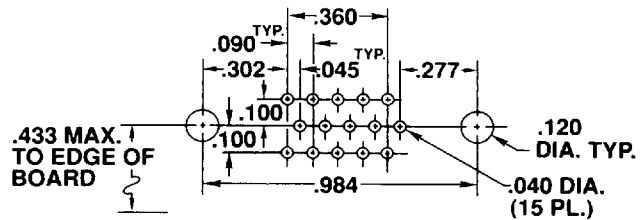
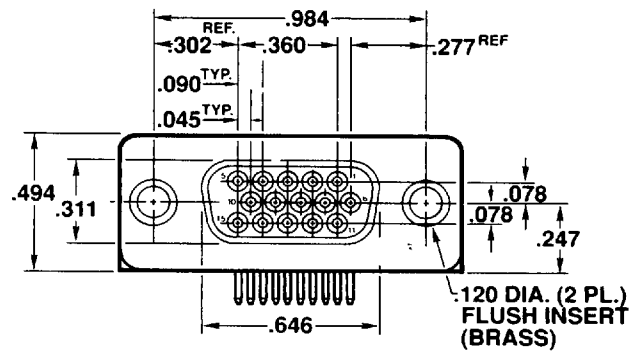
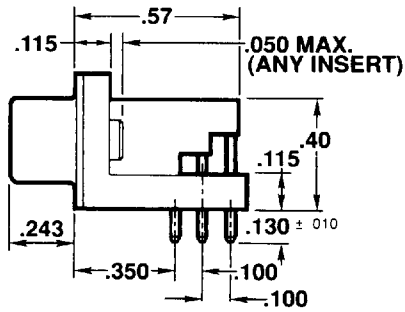
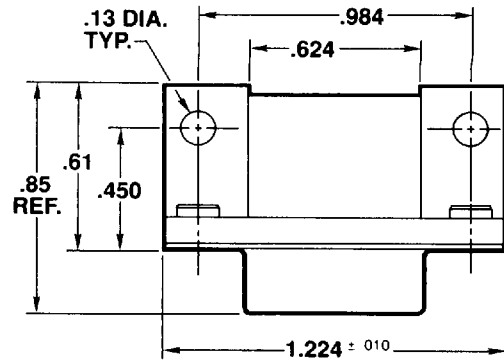


MOUNTING STYLE CS



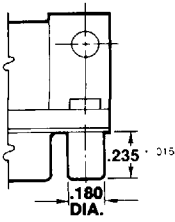
METAL SNAPLATCH IS DESIGNED TO SNAP INTO A .120 DIA HOLE AND A .062 THICK PCB

**HD SERIES (HIGH DENSITY)
15 POSITIONS
METAL SHELL RIGHT ANGLE
FEMALE RECEPTACLES FOR
PRINTED CIRCUIT BOARD MOUNTING**

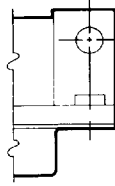


C

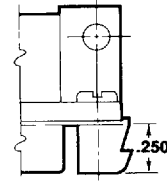
HD SERIES (HIGH DENSITY)



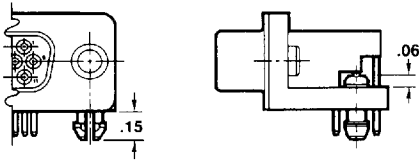
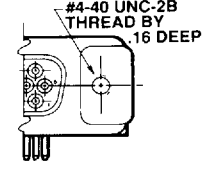
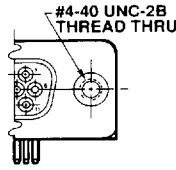
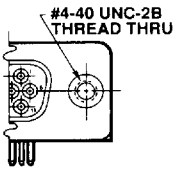
**MOUNTING STYLE B
THREADED STANDOFF**



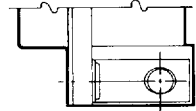
**MOUNTING STYLE C
FLUSH INSERT**



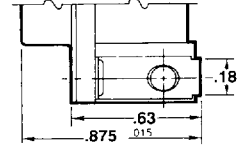
**MOUNTING STYLE J
THREADED CABLE LATCH**



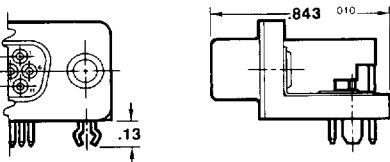
**PLASTIC SNAP LATCH
STYLE P**



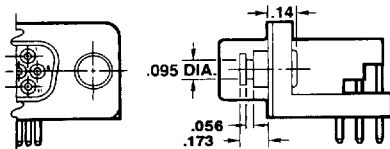
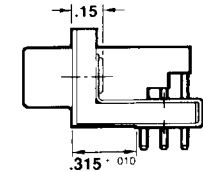
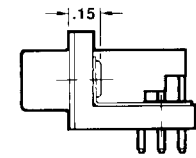
**SPECIAL MOD M43
INSIDE GROUND STRAP**



**SPECIAL MOD M45
OUTSIDE/INSIDE GROUND STRAP**



**METAL SNAP LATCH
STYLE S**



**MOUNTING STYLE F
SLIDE LOCK POST**

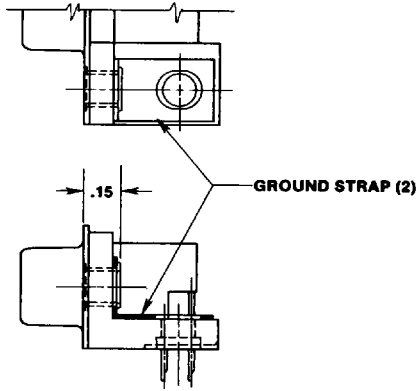
OTHER SPECIAL MODS

M30 - MOUNTING STYLE B, C, OR J WITH METRIC THREAD M3 RATHER THAN #4-40 UNC-2B.

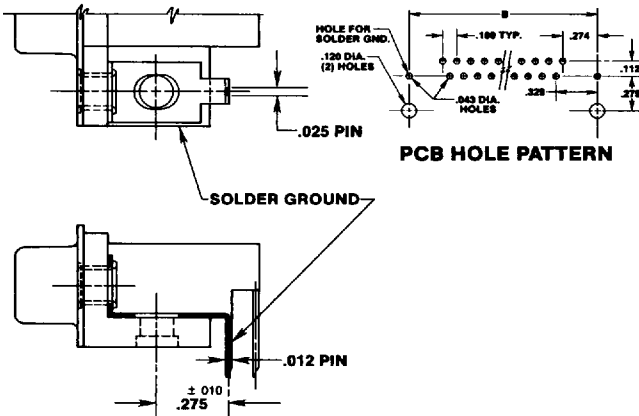
M33 - METRIC THREAD INSERT AND INSIDE GROUND STRAP.

M35 - METRIC THREAD INSERT AND OUTSIDE/INSIDE GROUND STRAP.

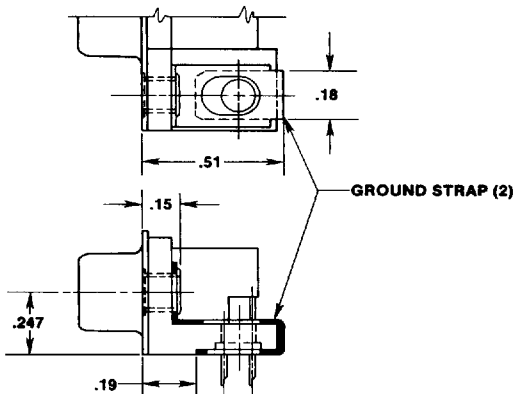
- M30** — Metric thread size M3.
- M33** — Metric thread with inside ground strap.
- M34** — Metric thread with solder ground.
- M35** — Metric thread with outside/inside ground strap.
- M43** — Inside ground strap.



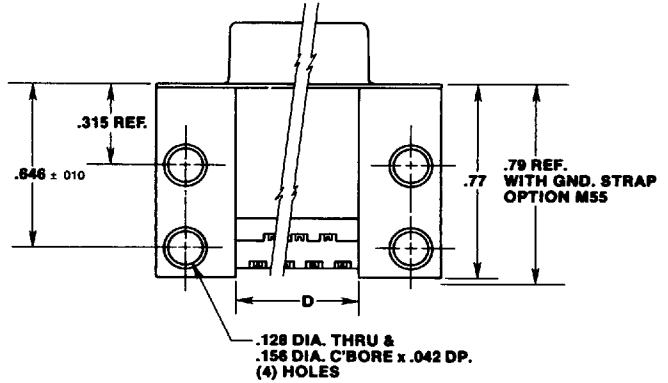
- M44** — Solder ground.



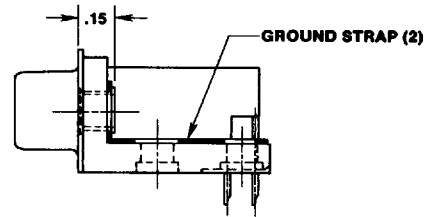
- M45** — Outside/inside ground strap.



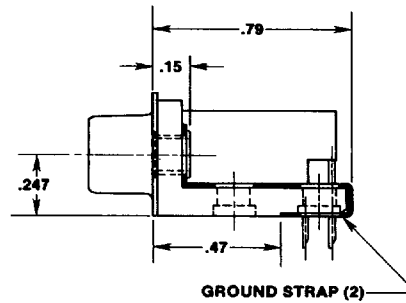
- M50** — Back mounting hole.



- M53** — Back mounting hole with inside ground strap.



- M55** — Back mounting hole with outside/inside ground strap.



- M60** — Back mounting hole, metric thread.

- M63** — Back mounting hole, metric thread with inside ground strap.

- M65** — Back mounting hole, metric thread with outside/inside ground strap.

C