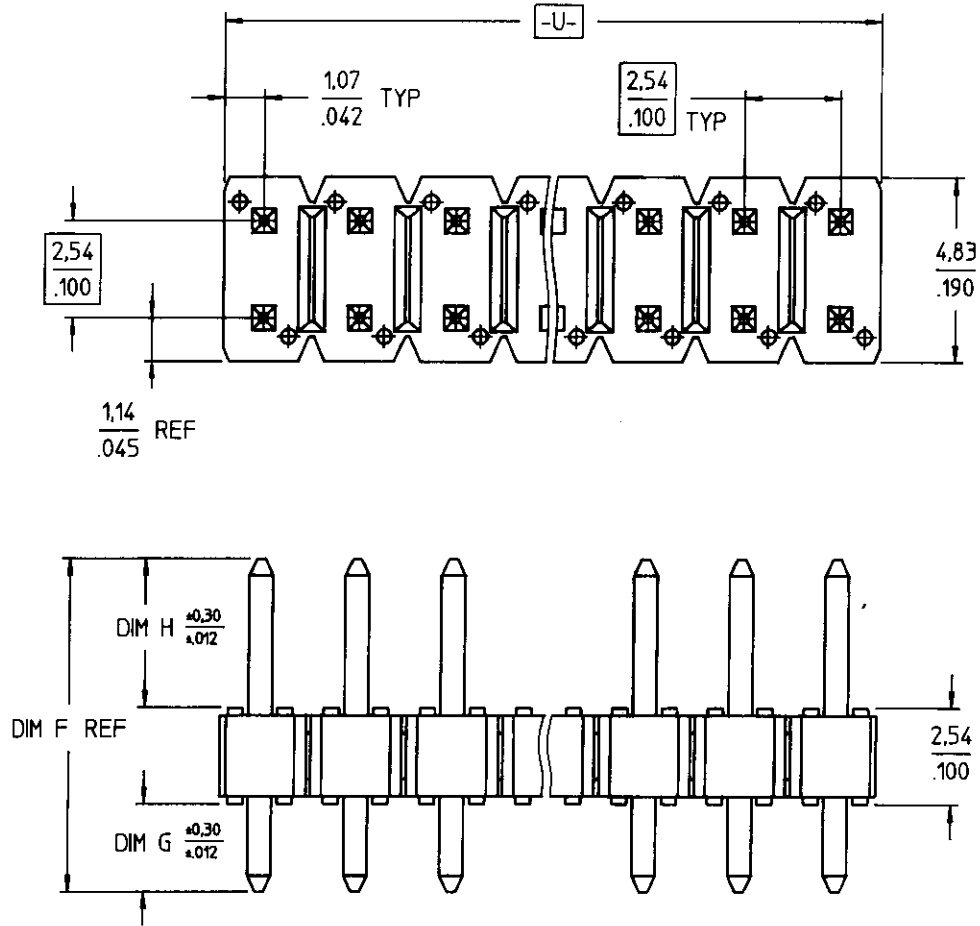


PRODUCT NO

SEE TABLE

REV	DESCRIPTION	REV'D BY	DATE
E	ECR K40044	WW LEE	07NOV94
F	ECR K50039	WW LEE	07NOV95
G	ECR S60431	J.M.COM.	05JUL96



NOTE 4

NOTE 1

CUSTOMER COPY

GEN. TOLERANCES XX±0.3/XX±.01 XXX±0.13/XXX±.005 XXXX±0.051/XXXX±.0020 ANGLES = ±2°		DO NOT SCALE DWG. 		
DRAWN BK CHUA CHECKED <i>[Signature]</i> APPROVED <i>[Signature]</i>		DATE 05JUL96 8.7.96		
DESCRIPTION ECON-STIK HEADER .100/2.54 cc D/R STRAIGHT				PRODUCT NO. 92849 SCALE SHT 1 OF 2
NAME BK CHUA DATE 05JUL96				

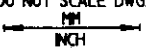

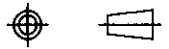
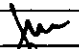
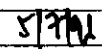

PRODUCT NO	NO. OF POS.	TOTAL LENGTH	TAIL LENGTH	MATING LENGTH	PLATING TYPE
		DIM. F	DIM. G	DIM. H	
92849-001-XX	2 THRU 72	10,80 / .425	2,41 / .095	5,84 / .230	2u" Au OVER 50u" Ni
92849-002-XX	2 THRU 72	13,03 / .513	2,41 / .095	8,08 / .318	2u" Au OVER 50u" Ni
92849-003-XX	2 THRU 72	11,59 / .456	3,05 / .120	6,00 / .236	2u" Au OVER 50u" Ni

REV
E
F
G

NOTES :

- ① BODY MATERIAL : 20% MIN. GLASS FILLED NYLON.
FLAME RETARDANT PER UL-94V-0.
COLOR : BLACK.
- 2 PIN MATERIAL : BRASS.
- 3 TWO SIDES OF PIN TIPS NOT PLATED. TYPICAL BOTH ENDS.
- ④ 2 LBS / 0,9 KG MIN PIN RETENTION IN EITHER DIRECTION.
- 5 PACKAGE IN POLY BAGS PER BUS-14-099.
- 6 PART NO CONSIST OF;

92849-XXX-XX	└─ NO OF POSITION
	└─ BASE P/NO
- 7 FOR EUROPEAN SOURCING , SEE DWG 95266

GEN. TOLERANCES XX±0,3/XX±,01 X,XX±0,13/XXX±,005 XXXX±0,05/XXXX±,0020 ANGLES = ±2°	DO NOT SCALE DWG. 		
			
DRAWN	NAME BK CHUA	DATE 05JUL.96	PRODUCT NO. 92849
CHECKED			SCALE SHT_2 OF 2
APPROVED		8.7.96	

CUSTOMER COPY