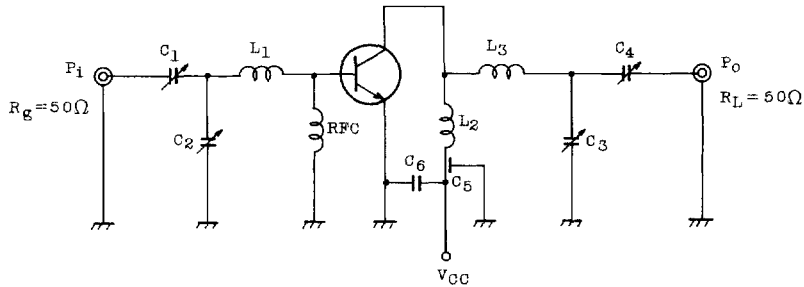


Fig. P_O TEST CIRCUIT



- C₁ : 5 ~ 20pF
- C₂, C₃, C₄ : 3.5 ~ 30pF
- C₅ : 1000pF FEED THROUGH
- C₆ : 0.01μF CERAMIC CONDENSER
- L₁, L₃ : φ1 SILVER PLATED COPPER WIRE, 6ID, 1T
- L₂ : φ1 SILVER PLATED COPPER WIRE, 6ID, 2T
- RFC : φ1 ENAMEL COATED COPPER WIRE, 6ID, 3T

