



SCHOTTKY DIODE MODULE TYPES 600A

Features

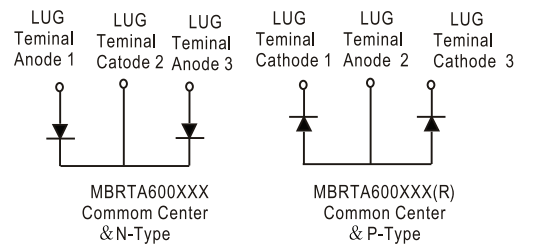
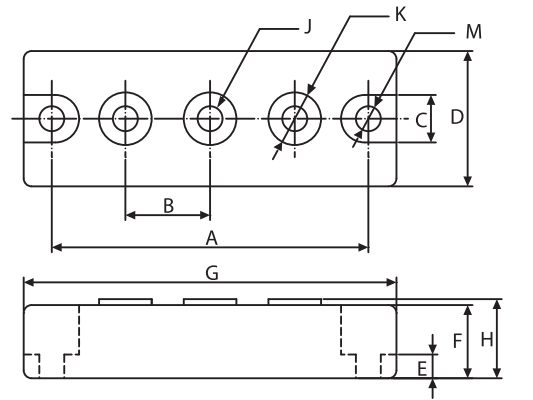
- High Surge Capability
- Types Up to 200V V_{RRM}
- Isolation Type Package
- Electrically Isolation Baseplate

**600Amp Rectifier
150-200 Volts**

HEAVY THREE TOWER

Maximum Ratings

Operating Temperature: -55°C to+150 °C
Storage Temperature: -55°C to+150 °C



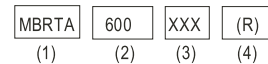
Part Number	Maximum Recurrent Peak Reverse Voltage	Maximum RMS Voltage	Maximum DC Blocking Voltage
MBRTA600150(R)	150V	106V	150V
MBRTA600200(R)	200V	141V	200V

Electrical Characteristics @ 25°C Unless Otherwise Specified

Average Forward Current (Per pkg)	$I_{F(AV)}$	600A	$T_c = 100^\circ C$
Peak Forward Surge Current (Per leg)	I_{FSM}	4000A	8.3ms, half sine
Maximum Instantaneous Forward Voltage (Per leg) 150V 200V	V_F	0.88V 0.92V	$I_{FM}=300A ; T_J=25^\circ C$
Maximum Instantaneous Reverse Current At Rated DC Blocking Voltage (Per leg) NOTE (1)	I_R	1 mA 10 mA 50 mA	$T_J = 25^\circ C$ $T_J = 100^\circ C$ $T_J = 150^\circ C$
Maximum Thermal Resistance Junction To Case (Per leg)	$R_{\theta jc}$	0.28°C/W	

NOTE :
(1) Pulse Test: Pulse Width 300 μ sec, Duty < 2%

Ordering code



- (1) MBRTA for Schottky diode modules & Isolation
- (2) Maximum average current, Ampere
- (3) Voltage code, V_{RRM}

DIM	DIMENSIONS				NOTE
	INCHES		MM		
	MIN	MAX	MIN	MAX	
A	3.150	NOM	80.01	NOM	
B	.872	.892	22.15	22.65	
C	.465	.479	11.82	12.18	
D	1.337	1.356	33.95	34.45	
E	.230	.234	5.84	6.16	
F	.725	REF	18.42	REF	
G	3.668	3.768	93.17	95.71	
H	---	.791	---	20.10	
J	1/4-20 UNC FULL				
K	.509	.538	12.92	13.68	\emptyset
M	.238	.258	6.05	6.55	\emptyset



Figure.1-Typical Forward Characteristics

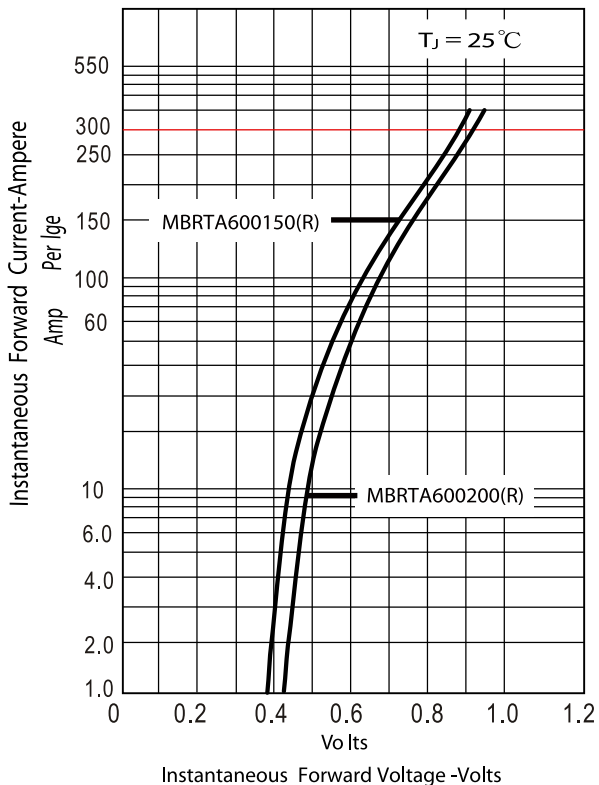


Figure.2-Forward Derating Curve

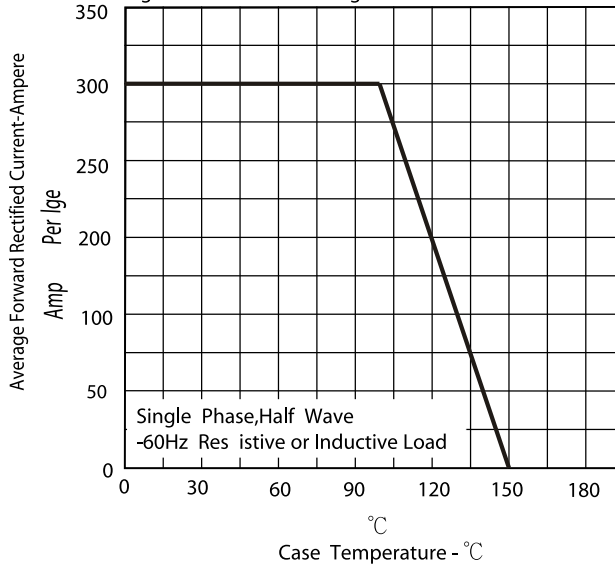


Figure.3-Peak Forward Surge Current

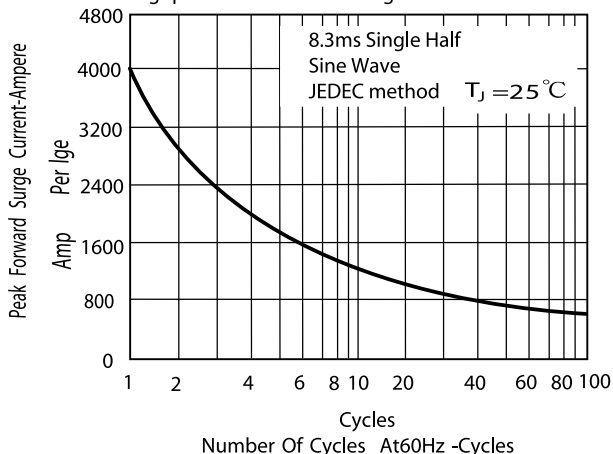


Figure.4-Typical Reverse Characteristics

