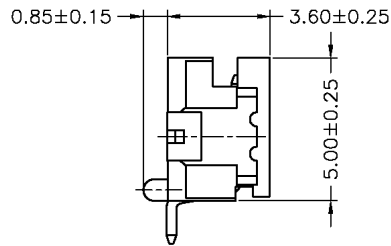
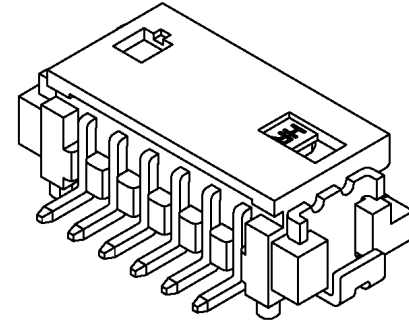


P.C.B. LAYOUT



SPECIFICATIONS

- Current Rating: 1A AC,DC
- Voltage Rating: 150V AC,DC
- Contact Material: Brass/Gold—Flash
- Contact Resistance: 30mΩ max.
- Insulation Material: Nylon 6T,UL94V-0
- Insulation Resistance: 500MΩ Min.
- Solder Tabs: Phosphor Bronze/Gold Flash
- Withstanding: 500V AC/minute
- Operating Temp: -25°C ~ +85°C



Series	Series	Positions	Mounting	Options
JS	J-1252	XX	XX	XX
Pluggable Connector	1.25 Pitch mini connector	02-15	ST=Vertical RA=Side Entry	Blank=Dip Type SM=Surface Mount

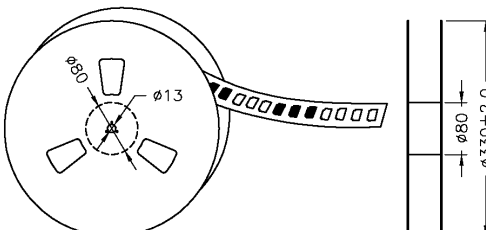
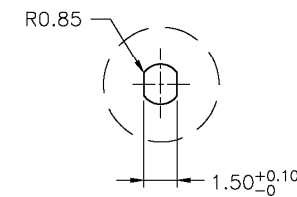
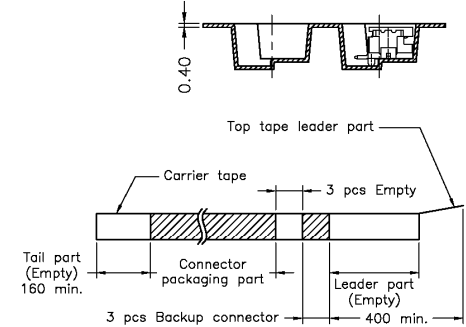
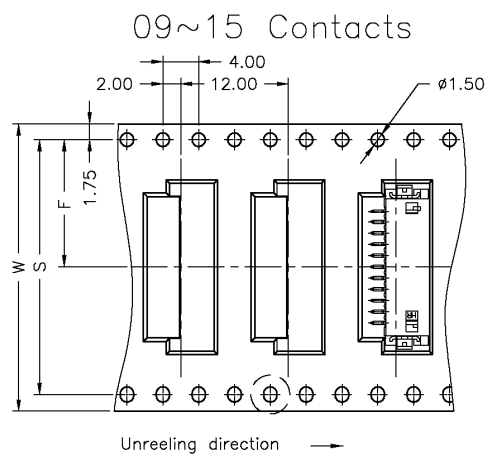
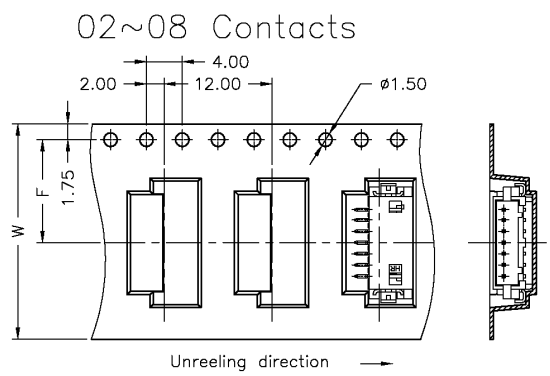
RoHS compliant

Rev.	Description	Date	Approved	Drawing	Name	Date
				Approved	Howard	8/01/06
				Checked	Lizzy	8/01/06
				Drawn	Tina	8/01/06
				0.0 ± 0.35	0.00 ± 0.20	Angles ± 3'
				UNIT: mm		

Central Components Manufacturing
 440 Lincoln Blvd., Middlesex, New Jersey 08846
 Phone 732 469-5720 888 288-5152 Fax 732 469-1919

Part No.: **JS-J-1252-XX-RA-SM**

Description: 1.25mm Single Row Side Entry Surface Mount Wafer



Dimensions			
# Contacts	W±0.3	F±0.1	S±0.1
02	16	7.50	X
03	16	7.50	
04	24	11.50	
05	24	11.50	
06	24	11.50	
07	24	11.50	
08	24	11.50	
09	32	14.20	
10	32	14.20	28.40
11	32	14.20	28.40
12	32	14.20	28.40
13	32	14.20	28.40
14	44	20.20	40.40
15	44	20.20	40.40

RoHS compliant

Rev.	Description	Date	Approved	Drawing	Name	Date
				Approved	Howard	8/01/06
				Checked	Lizzy	8/01/06
				Drawn	Tina	8/01/06
				0.0 ± 0.35	0.00 ± 0.20	Angles ± 3'
				UNIT: mm		

Central Components Manufacturing
 440 Lincoln Blvd., Middlesex, New Jersey 08846
 Phone 732 469-5720 888 288-5152 Fax 732 469-1919

Part No.: **JS-JT-1252-XX-RA-SM**

Description: 1.25mm Single Row Side Entry Surface Mount Wafer