

Used for TATUNG

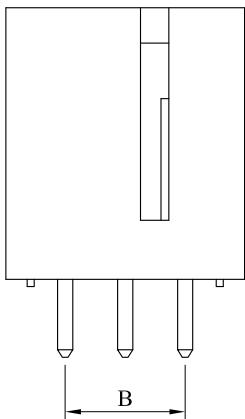
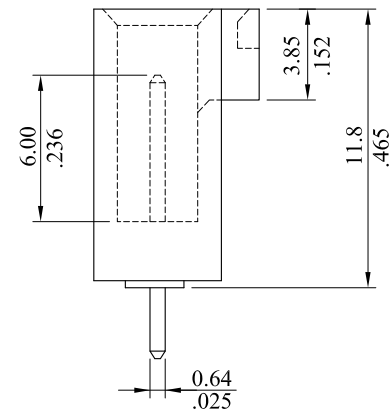
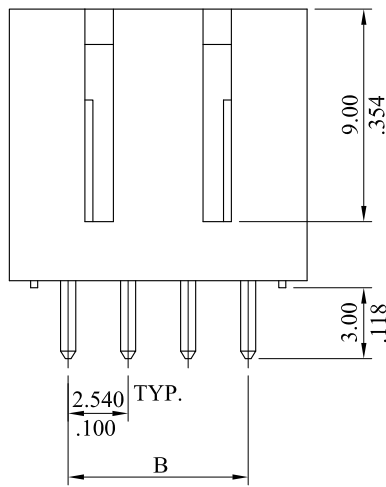
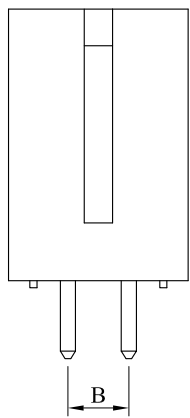
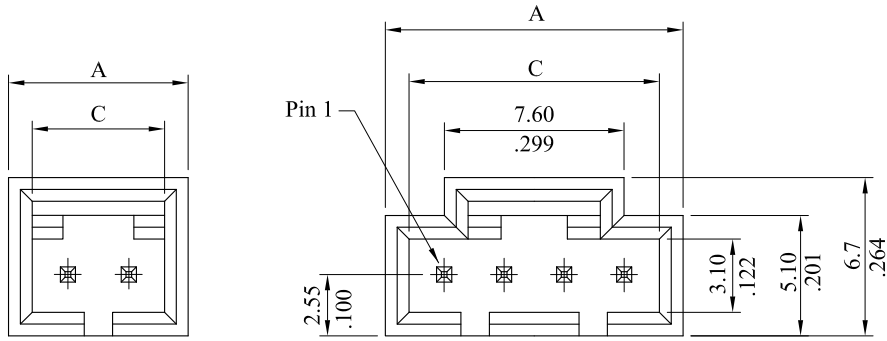
*** 2550 V SERIES ***

Material :

* Insulator : PBT+30%GF UL94V-0

* Contact : Brass

RoHS COMPLIANT



For 3 , 4,5,6 Circuits

Circuits	Dim.A	Dim.B	Dim.C
2	7.6(.299)	2.540(.100)	5.60(.220)
3	10.1(.398)	5.08(.200)	8.10(.319)
4	12.6(.496)	7.62(.300)	10.60(.417)
5	15.1(.594)	10.16(.400)	13.10(.516)
6	17.6(.693)	12.70(.500)	15.60(.614)

D	ES101242		
C	ES071009		
B	ES050417		
A	DWG REL		
REV.	ECO. NO.	CHG.	APP.

leoco LEOCO CORPORATION

GENERAL TOLERANCES:
(UNLESS SPECIFIED)

	mm	inch
1 PLACE	± 0.30	± --
2 PLACES	± 0.20	± .012
3 PLACES	± 0.10	± .008
4 PLACES	± --	± .004

ANGULAR ± (1°)

APPROVED:

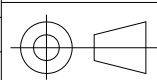
DATE:

CHECKED:

DATE:

DRAWN:

DATE:



UNITS
mm
inch

PART NO.:
2550P**V*0*

TITLE:
2.54mm(.100") Pitch
Shrouded Header

DRAWING NO.:
255010S

SCALE	SIZE	SHEET	REV.
3:1	A4	1/2	D

RoHS COMPLIANT

Used for TATUNG
 *** 2550 V SERIES ***

Ordering Information:

$$2550 P \frac{**}{1} \frac{V}{2} \frac{*}{3} \frac{0}{4}$$

1. No. of circuits

2. Plating :

T=Tin plated 120μ ” min over 30μ ” min. nickel overall

U=Gold flash over 30μ ”min. nickel overall

3. Packing:

0= Plastic Bag

N= Tray

4. Color options:

0= Black

Packing for Tray:

* Material name: Tray

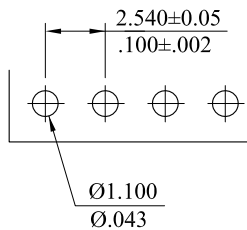
* Q'TY per tray:

2P: 200pcs.

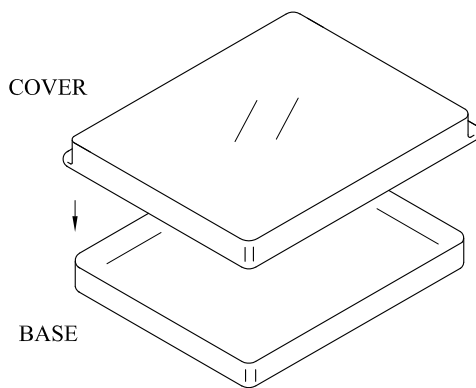
3P: 150pcs.

4P: 100pcs.

* Dimension: 128.2mm × 101.5mm



Recommended Hole Pattern



				LEOCO CORPORATION	APPROVED:	PART NO.:						
D	ES101242				GENERAL TOLERANCES: (UNLESS SPECIFIED)	DATE:	2550P**V*0*					
C	ES071009			mm		inch	CHECKED:	TITLE:				
B	ES050417			1 PLACE	± 0.30	± --	DATE:	2.54mm(.100") Pitch				
A	DWG REL			2 PLACES	± 0.20	± .012	DRAWN:	Shrouded Header				
REV.	ECO. NO.	CHG.	APP.	3 PLACES	± 0.10	± .008	DATE:	DRAWING NO.:				
				4 PLACES	± --	± .004		UNITS	SCALE	SIZE	SHEET	REV.
				ANGULAR ± (1°)				mm/inch	3:1	A4	2/2	D