

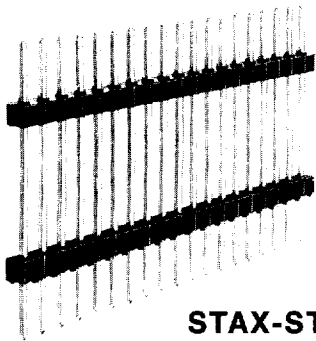
ARIES ELECTRONICS INC
STAX-STIX
SERIES BV & BH
FEMALE BOX CONNECTORS

54E D ■ 0923053 0001005 539 ■

P.O. Box 130, Frenchtown, NJ 08825
 Phone 1-908-996-6841
 FAX 1-908-996-3891

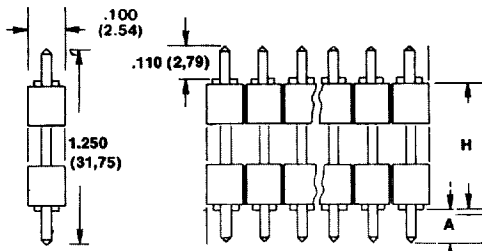


A-61-05-07
 A-61-05-07

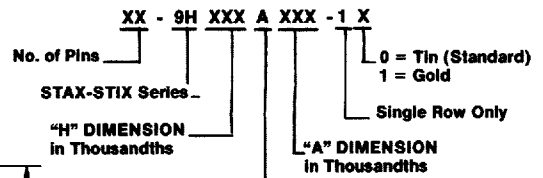


STAX-STIX

Stax-Stix are p.c. board spacers. The plastic is UL94V0 rated. Pins are standard .025 (0,63) square.



HOW TO ORDER

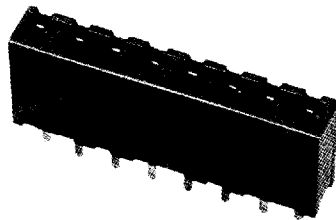


CONSULT FACTORY FOR 2 ROW STAX-STIX

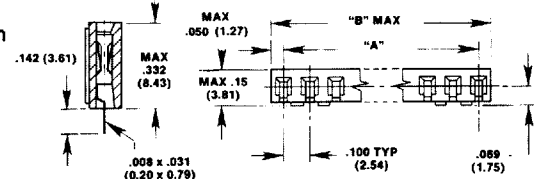
*Note "A" Dimension plus "H" Dimension cannot exceed 1.140 (28,95).

FEATURES

- Connector assemblies mate with .025" (0.635) square or round posts.
- Dual beam contacts provide optimum insertion and withdrawal cycling.
- Phenolic insulator has the ability of withstanding high soldering temperatures without distortion.
- Contacts are available with either selective gold plating or tin-lead plating.
- Connectors are end-to-end stackable.
- Solder standoffs facilitate flux removal.



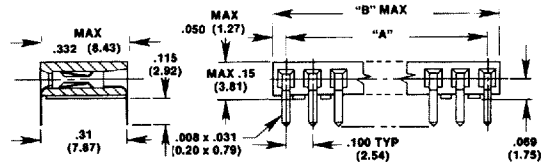
SERIES BV
FEMALE BOX
CONNECTOR
 4 thru 40 Positions



SERIES BV

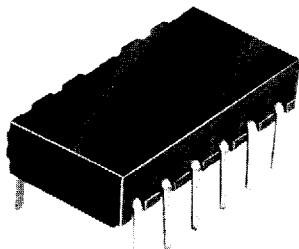
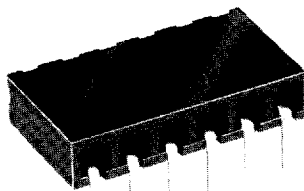
SPECIFICATIONS

Current Rating: 3 Amperes
Contact Resistance: 15 Milliohms Max.
Dielectric Withstanding Voltage: 1000 VAC RMS (Sea Level)
Insulation Resistance: 5000 Megohms Min.
Operating Temperature: -85°C to +105°C
Insertion Force: 5 oz. Max.
Withdrawal Force: 1 oz. Min.
Insulator Material: Glass Filled Thermoplastic, UL Rated 94 V0
Contact Material & Finish: See Ordering Code



SERIES BH

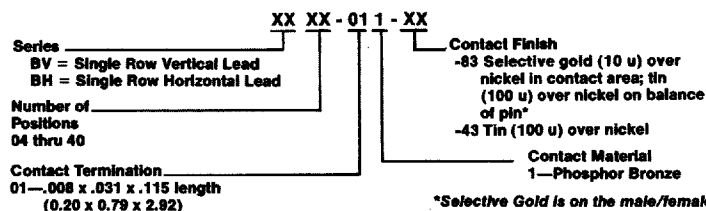
For special requirements, consult factory.



SERIES BH
FEMALE BOX
CONNECTOR
 4 thru 40 Positions

No. of Contact Positions	A	B Max.	No. of Contact Positions	A	B Max.	No. of Contact Positions	A	B Max.	No. of Contact Positions	A	B Max.
4	.300 (7.62)	.400 (10.16)	12	1.100 (27.94)	1.200 (30.48)	20	1.900 (48.26)	2.000 (50.80)	28	2.700 (68.58)	2.800 (71.12)
5	.400 (10.16)	.500 (12.70)	13	1.200 (30.48)	1.300 (33.02)	21	2.000 (50.80)	2.100 (53.34)	29	2.800 (71.12)	2.900 (73.66)
6	.500 (12.70)	.600 (15.24)	14	1.300 (33.02)	1.400 (35.56)	22	2.100 (53.34)	2.200 (55.88)	30	2.900 (73.66)	3.000 (76.20)
7	.600 (15.24)	.700 (17.78)	15	1.400 (35.56)	1.500 (38.10)	23	2.200 (55.88)	2.300 (58.42)	31	3.000 (76.20)	3.100 (78.74)
8	.700 (17.78)	.800 (20.32)	16	1.500 (38.10)	1.600 (40.64)	24	2.300 (58.42)	2.400 (60.96)	32	3.100 (78.74)	3.200 (81.28)
9	.800 (20.32)	.900 (22.86)	17	1.600 (40.64)	1.700 (43.18)	25	2.400 (60.96)	2.500 (63.50)	33	3.200 (81.28)	3.300 (83.83)
10	.900 (22.86)	1.000 (25.40)	18	1.700 (43.18)	1.800 (45.72)	26	2.500 (63.50)	2.600 (66.04)	34	3.300 (83.83)	3.400 (86.36)
11	1.000 (25.40)	1.100 (27.94)	19	1.800 (45.72)	1.900 (48.26)	27	2.600 (66.04)	2.700 (68.58)	35	3.400 (86.36)	3.500 (88.90)

HOW TO ORDER



*Selective Gold is on the male/female engaging area.