

FEATURES AND SPECIFICATIONS

Features and Benefits

- Sizes 4 to 80 circuits
- Low profile: .250" high
- Designed for parallel and perpendicular stacking; also for PCB-to-harness and PCB-to-chassis connections
- Stackable end-to-end and side-to-side on .100" grid
- Dual beam box contact
- Standoffs facilitate post solder cleaning

Reference Information

Product Specification: PS-70181
 Packaging: Tray
 UL File No.: E29179 (G)
 CSA File No.: LR19980A
 Designed In: Inches

Electrical

Voltage: 250V
 Current: 2.5A
 Contact Resistance: 15mΩ
 Dielectric Withstanding Voltage: 1500V
 Insulation Resistance: 100K MΩ min.

Mechanical

Contact Insertion Force: 227g (0.5 lb)
 Contact Retention to Housing: 1.8kg (4 lb)
 Normal Force: 150g (0.3 lb)
 Durability: 25 cycles Tin/Lead and 50 cycles Gold

Physical

Housing: Black glass-filled polyester, UL 94V-0
 Contact: Phosphor Bronze
 Plating: See Table
 Temperature: -40 to +105°C
 PCB Thickness: .120" tail for .062" thick PCB; .050" tail ideal for thinner substrates: membrane switch and flex circuitry

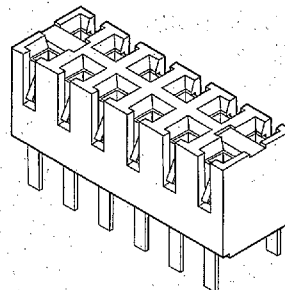


**2.54mm (.100") Pitch
C-Grid®
PCB Connector**

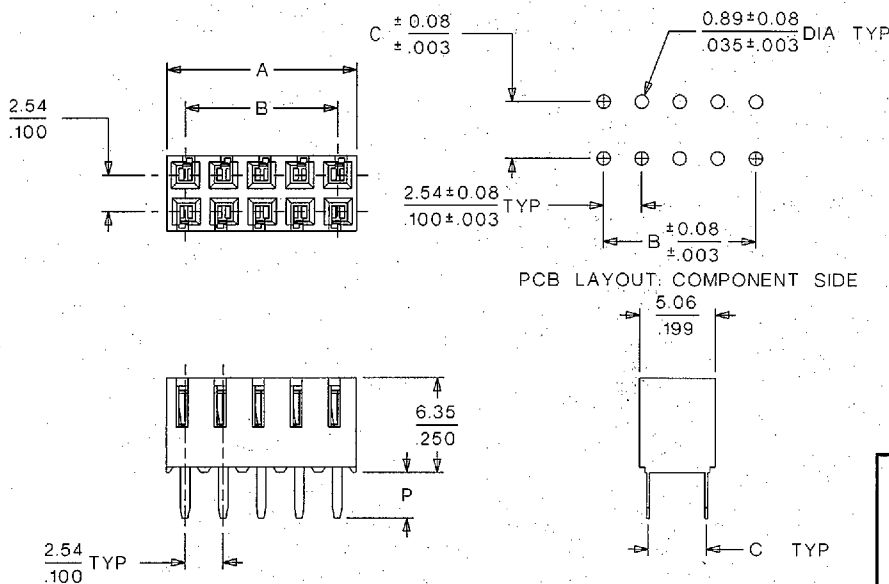
70181/70851 .100 x .150" Grid

70182/70852 .100 x .100" Grid

**Low Profile, Dual Row
Vertical**



Not For Use With C-Grid III® Components



Delivered on a carrier with 20 pieces per strip.
Actual Size **Universal Polarizing Pin 40713-1**
 Order No. 15-04-0292

ORDERING INFORMATION AND DIMENSIONS

	70181	70182	70851	70852
PC Tail Grid	2.54 x 3.81mm (.100 x .150")	2.54 x 2.54mm (.100 x .100")	2.54 x 3.81mm (.100 x .150")	2.54 x 2.54mm (.100 x .100")
PC Tail Length Dimension P	3.50mm (.120")	3.50mm (.120")	1.27mm (.050")	1.27mm (.050")
Plating Option	Order No.	Order No.	Order No.	Order No.
15µ" min. select Gold	• 15-44-37XX	• 15-44-36XX	15-47-60XX	15-47-61XX
30µ" select Gold	• 15-44-40XX	• 15-44-41XX	15-47-67XX	15-47-68XX
150µ" Tin/Lead	• 15-45-08XX	• 15-45-09XX	15-45-40XX	15-45-41XX
	Replace XX with no. of circuits per row (02-40), example: 20 circuit = 15-44-3710		Replace XX with total no. of circuits (04-80), example: 20 circuit = 15-47-6020	

Circuits	Dimension	
	A	B
4	5.05 (1.99)	2.54 (1.00)
6	7.59 (2.99)	5.08 (2.00)
8	10.13 (3.99)	7.62 (3.00)
10	12.67 (4.99)	10.16 (4.00)
12	15.21 (5.99)	12.70 (5.00)
14	17.75 (6.99)	15.24 (6.00)
16	20.29 (7.99)	17.78 (7.00)
18	22.83 (8.99)	20.32 (8.00)
20	25.37 (9.99)	22.86 (9.00)
22	27.91 (10.99)	25.40 (10.00)

Circuits	Dimension	
	A	B
24	30.45 (1.199)	27.94 (1.100)
26	32.99 (1.299)	30.48 (1.200)
28	35.53 (1.399)	33.02 (1.300)
30	38.07 (1.499)	35.56 (1.400)
32	40.61 (1.599)	38.10 (1.500)
34	43.15 (1.699)	40.64 (1.600)
36	45.69 (1.799)	43.18 (1.700)
38	48.23 (1.899)	45.72 (1.800)
40	50.77 (1.999)	48.26 (1.900)
42	53.31 (2.099)	50.80 (2.000)

Circuits	Dimension	
	A	B
44	55.85 (2.199)	53.34 (2.100)
46	58.39 (2.299)	55.88 (2.200)
48	60.93 (2.399)	58.42 (2.300)
50	63.47 (2.499)	60.96 (2.400)
52	66.01 (2.599)	63.50 (2.500)
54	68.55 (2.699)	66.04 (2.600)
56	71.09 (2.799)	68.58 (2.700)
58	73.63 (2.899)	71.12 (2.800)
60	76.17 (2.999)	73.66 (2.900)
62	78.71 (3.099)	76.20 (3.000)

Circuits	Dimension	
	A	B
64	81.25 (3.199)	78.74 (3.100)
66	83.79 (3.299)	81.28 (3.200)
68	86.33 (3.399)	83.82 (3.300)
70	88.87 (3.499)	86.36 (3.400)
72	91.41 (3.599)	88.90 (3.500)
74	93.95 (3.699)	91.44 (3.600)
76	96.49 (3.799)	93.98 (3.700)
78	99.03 (3.899)	96.52 (3.800)
80	101.57 (3.999)	99.06 (3.900)

• US Standard Product, available through Molex franchised distributors