

**SPECIFICATIONS**

**Mechanical**

Contact Retention Force: 1.36Kgf min.

**Electrical**

Voltage Rating: 250V

Current Rating: 3.0A max.per pin

Dielectric Withstanding Voltage: 1000V AC

Insulation Resistance: 1000MΩ min.

**Physical**

Housing: High Temperature Nylon, UL 94V-0 Rating

Contact: Copper alloy

Plating: See "ORDERING INFORMATION"

Operating Temperature: -40 to +85

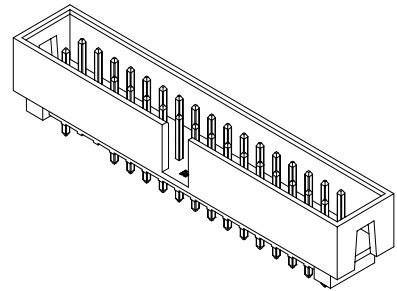
**Header Connector**

HL29 Series

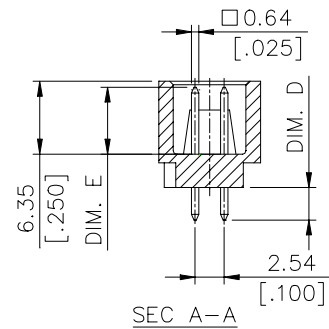
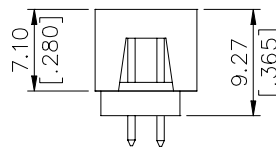
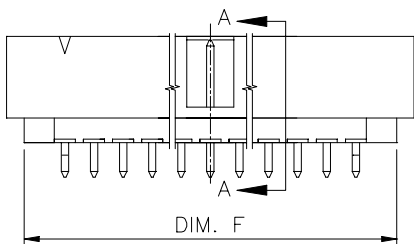
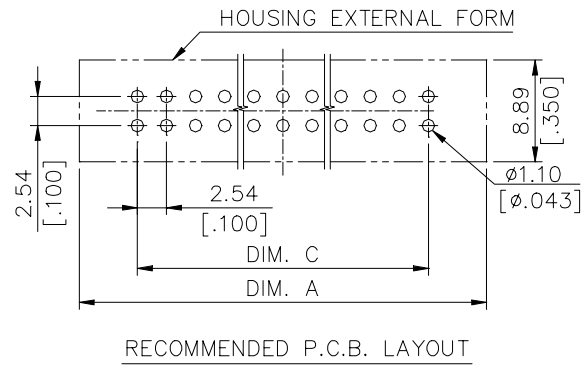
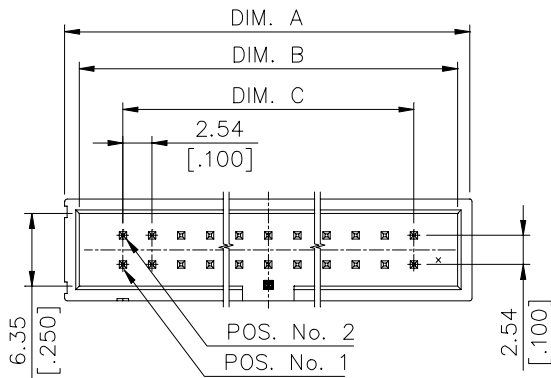
Vertical, T/H Type

Plug

2.54mm [.100"] Pitch



**DRAWING**



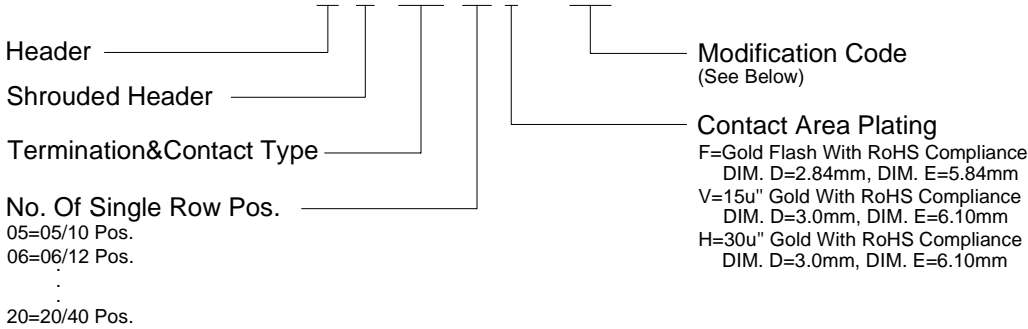
**ORDERING INFORMATION**

See The Attachment I

See The Attachment II

## The Attachment I

PRODUCT No. : H L 2 9 \*\* \* - \*\*\*



### Modification Code

CODE	REMOVED PINS	CODE	REMOVED PINS	CODE	REMOVED PINS	CODE	REMOVED PINS
NONE	FULL PIN	NONE	FULL PIN	NONE	FULL PIN	NONE	FULL PIN
D0	POS. NO. 1	E5	POS. NO. 9 & 10	L6	POS. NO. 14	T9	POS. NO. 25, 27 & 28
D1	LAST PIN	P0	POS. NO. 4	L7	POS. NO. 16	U0	POS. NO. 3, 5, 7 & 9
D2	POS. NO. 20	P1	POS. NO. 6	L8	POS. NO. 1,2,3,4,14,15&16	U1	POS. NO. 3 & 5
D3	POS. NO. 21	P3	POS. NO. 7	L9	POS. NO. 25	U2	POS. NO. 11
D4	POS. NO. 8	P4	POS. NO. 5	T0	POS. NO. 1,2,10,11&12	U3	POS. NO. 19
D6	POS. NO. 25	P5	POS. NO. 10	T1	POS. NO. 7 & 8	U4	POS. NO. 13
D7	POS. NO. 26	P6	POS. NO. 2	T2	POS. NO. 3, 25 & 26	U5	POS. NO. 13,15 & 16
D8	POS. NO. 28	P7	POS. NO. 3	T3	POS. NO. 8 & N	U6	POS. NO. 4 & 7
D9	POS. NO. 15	P8	POS. NO. 17	T4	POS. NO. 3, 19, 20 & 29	U7	POS. NO. 8 & 13
E1	POS. NO. 24	P9	POS. NO. 9	T5	POS. NO. 8 & 9	U8	POS. NO. 4, 5 & 6
E2	POS. NO. 22	L1	POS. NO. 12	T6	POS. NO. 3 & LAST PIN	U9	POS. NO. 1 & 11
E3	POS. NO. 30	L3	POS. NO. 32	T7	POS. NO. 8 & 19		
E4	POS. NO. 38	L5	POS. NO. 18	T8	POS. NO. 30 & 32		

#### REMARK:

- (1) NONE: STANDARD PRODUCT  
(X): TO BE SPECIFIED ON CORRELATIVE CUSTOMER DRAWING
- (2) NONE: STANDARD PRODUCT (COLOR BLACK)
  - K: THE FIRST & LAST PAIRS OF TERMINALS ARE DEFORMED WITH KINKS
  - W: HOUSING COLOR IVORY, PANTONE WARM GRAY 1C
  - U: HOUSING COLOR BLUE, PANTONE 661C
  - R: HOUSING COLOR RED, PANTONE 199C
  - Y: HOUSING COLOR YELLOW, PANTONE 123C
  - G: HOUSING COLOR GREEN, PANTONE 346U
  - KW: THE FIRST & LAST PAIRS OF TERMINALS ARE DEFORMED WITH KINKS, HOUSING COLOR IVORY
  - K3: THE FIRST & LAST PAIRS OF TERMINALS ARE DEFORMED WITH KINKS (SPECIAL MODIFICATION CODE)
- (3) FOR REMOVED PIN(S) LOCATED AT FIRST OR LAST PAIR, KINKED POSITION(S) SHOULD BE CHANGED TO THE NEAREST PAIR.

## The Attachment II

HL2920*~***	40	58.42 [2.300]	55.88 [2.200]	48.26 [1.900]	55.37 [2.180]
HL2917*~***	34	50.80 [2.000]	48.26 [1.900]	40.64 [1.600]	47.75 [1.880]
HL2910*~***	20	33.02 [1.300]	30.48 [1.200]	22.86 [.900]	29.97 [1.180]
HL2907*~***	14	25.40 [1.000]	22.86 [.900]	15.24 [.600]	22.35 [.880]
HL2906*~***	12	22.86 [.900]	20.32 [.800]	12.70 [.500]	19.81 [.780]
HL2905*~***	10	20.32 [.800]	17.78 [.700]	10.16 [.400]	17.27 [.680]
P/N	POS.	DIM. A	DIM. B	DIM. C	DIM. F