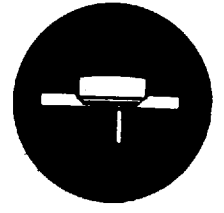


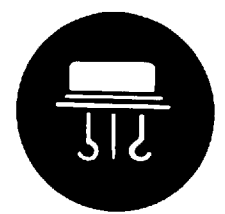
POWER TRANSISTORS

TYPE NO.	PT @ 25°C Watts	MAXIMUM RATINGS				hfe @				Sat Voltages		Test Conditions		
		BVCBO	BVCEO	BVEBO	Ic	hfe		Ic	VCE	VCE	VBE	Ic	Ib	IEBO
		V	V	V	A	MIN	MAX	A	V	V	V	A	A	ma
2N5067	88	40	40	5	5	20	80	1	2	.4	1.2	1.0	.1	1
2N5068	88	60	60	5	5	20	80	1	2	.4	1.2	1.0	.1	1
2N5069	88	80	80	5	5	20	80	1	2	.4	1.2	1.0	.1	1
2N5629	200	100	100	7	16	25	100	8	2	1.0	1.8	10.0	1.0	1
2N5630	200	120	120	7	16	20	80	8	2	1.0	1.8	10.0	1.0	1
2N5631	200	140	140	7	16	15	60	8	2	1.0	1.8	10.0	1.0	1
2N5632	150	100	100	7	10	25	100	5	2	1.0	2.0	7.5	.75	1
2N5633	150	120	120	7	10	20	80	5	2	1.0	2.0	7.5	.75	1
2N5634	150	140	140	7	10	15	60	5	2	1.0	2.0	7.5	.75	1



TO-3

TYPE NO.	PT @ 25°C Watts	MAXIMUM RATINGS				hfe @				Sat Voltages		Test Conditions		
		BVCBO	BVCEO	BVEBO	Ic	hfe		Ic	VCE	VCE	VBE	Ic	Ib	IEBO
		V	V	V	A	MIN	MAX	A	V	V	V	A	A	ma
2N389	85	60	60	10	3	12	60	1	15	5.0	8.0	1	.2	10
2N389A	85	60	60	10	3	12	60	1	4	.75	1.7	1	.2	10
2N424	85	80	80	10	3	12	60	1	15	10.0	8.0	1	.2	10
2N424A	85	80	80	10	3	12	60	1	4	.75	1.7	1	.2	10
2N1210	60	60	60	8	7.5	15	75	2	12	2.0	3.0	2	.25	1
2N1211	60	80	80	8	7.5	15	75	2	12	2.0	3.0	2	.25	1
2N1250	85	60	60	10	5	15	60	2	12	5.0	4.0	2	.25	10
2N1620	60	80	80	8	5	15	75	2	12	2.0	3.0	2	.25	1
*2N1722	50	175	80	10	5	30	90	2	15	.6	1.2	2	.2	.4
2N2032	85	45	45	5	5			2	12	5.0	4.0	2	.25	10
2N2383	85	80	60	8	2	20	60	1.5	4	1	2	1.5	.2	.050



TO-53

TYPE NO.	PT @ 25°C Watts	MAXIMUM RATINGS				hfe @				Sat Voltages		Test Conditions		
		BVCBO	BVCEO	BVEBO	Ic	hfe		Ic	VCE	VCE	VBE	Ic	Ib	IEBO
		V	V	V	A	MIN	MAX	A	V	V	V	A	A	ma
2N1647	40	80	60	6	3	15	45	.5	10	3.0	3.5	1	.1	.250
2N1648	40	120	80	6	3	15	45	.5	10	3.0	3.5	1	.1	.250
2N1649	40	80	60	6	3	30	90	.5	10	3.0	3.5	1	.1	.250
2N1650	40	120	80	6	3	30	90	.5	10	3.0	3.5	1	.1	.250
2N1886	40	60	60	6	3	20	80	.5	10	2.5	3.0	1	.1	.250
2N2828	40	80	60	10	3	20	60	.5	4	.4	1.2	.5	.05	.050
2N2829	40	80	60	10	3	20	60	1.0	4	.3	1.2	1	.1	.050

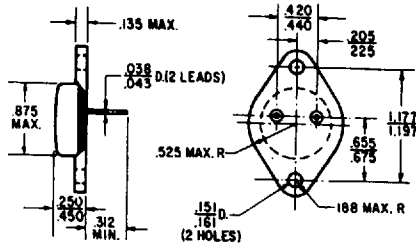


TO-59

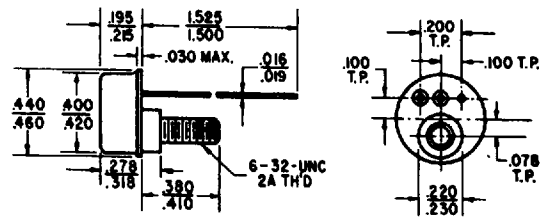
* JAN and JANTX

CASE OUTLINES

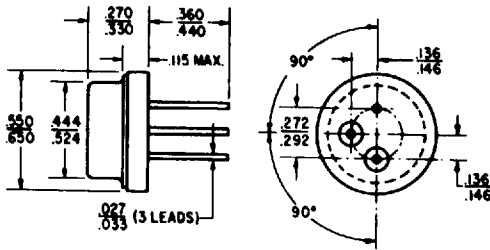
TO-3



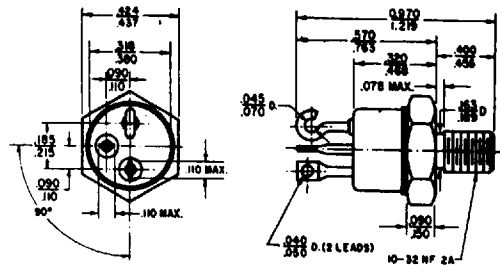
TO-57



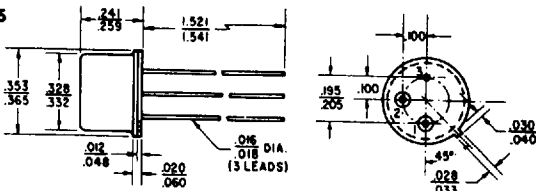
TO-8



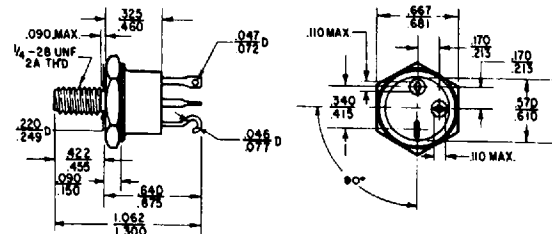
TO-59



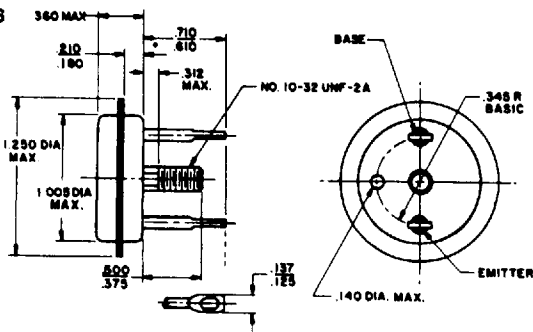
TO-5



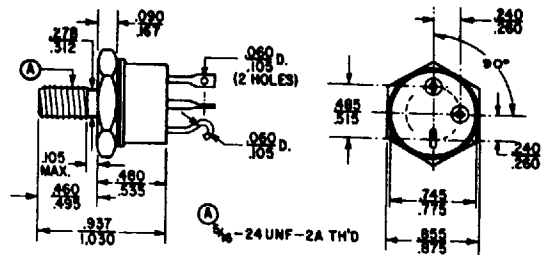
TO-81



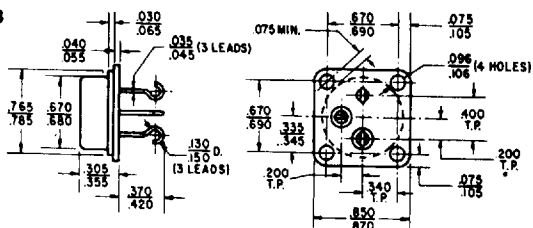
TO-36



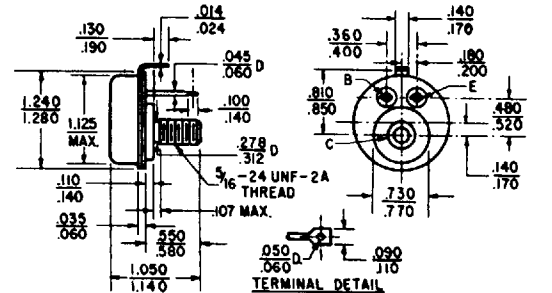
TO-63



TO-53



TO-82



TO-114

