

D

MATERIAL AND FINISH

Insulator: PBT, 30% glass-filled, UL-94V-0 rated, color black

Contacts: Phosphor bronze, Selective Gold plated (see chart) over Nickel

ELECTRICAL SPECIFICATIONS:

Rated current: 1A

Insulation resistance: 1000 Mohm min. at 500VDC

Contact resistance: 12 Mohm max. @ 6VDC 0.3A

Dielectric withstanding voltage: 500VAC for one minute

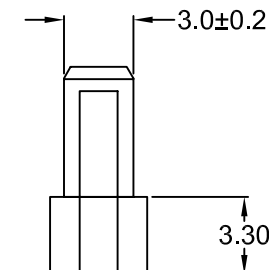
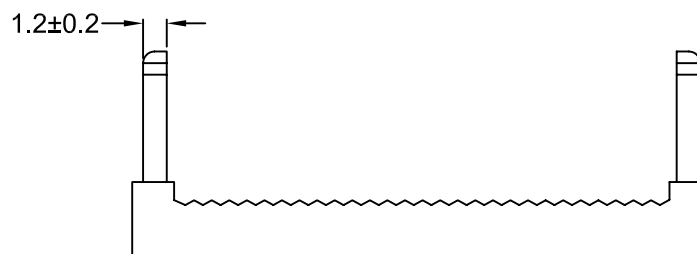
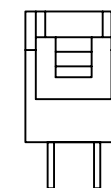
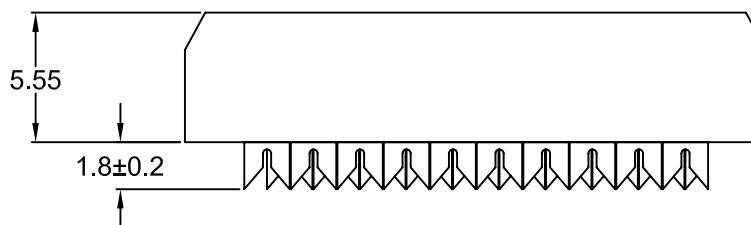
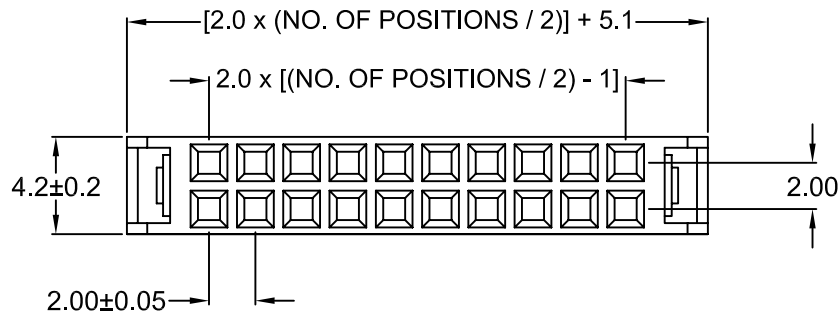
Operating temperature: -55°C to +105°C

NOTE: USE IDC FLAT CABLE. 1.0mm PITCH
28AWG STRANDED OR 30AWG SOLID

C

B

A



REVISIONS	CHNG	CHK	APPR
	DATE	DATE	DATE
	REV	DATE	DATE
	DATE	DATE	DATE

P/N	PLATING
TCSD-0XX-I-20	Gold Flash
TCSD-0XX-I-1-20	5 μ " Gold
TCSD-0XX-I-2-20	10 μ " Gold
TCSD-0XX-I-3-20	15 μ " Gold
TCSD-0XX-I-4-20	30 μ " Gold

TOLERANCE UNLESS OTHERWISE SPECIFIED	
X	± 1
X.X	± 0.4
X.XX	± 0.20
DRAWN BY	PB
CHECK BY	TD
DATE:	12/12/01
DATE:	12/12/01
DATE:	

Power Dynamics, Inc.

Phone: 973 560-0019 Whippany, New Jersey Fax: 973 560-0076

PART: RECEPTACLE; 2.0mm PITCH; 10-68 PINS
DOUBLE ROW / IDC FLAT WIRE

PART #: TCSD-0XX-I-X-20		SHEET 1 of 1
SIZE: A	ALL DIMENSIONS FOR REFERENCE ONLY DIMENSIONS ARE IN MILLIMETERS	REV:
SCALE: NTS		

D

C

B

A