

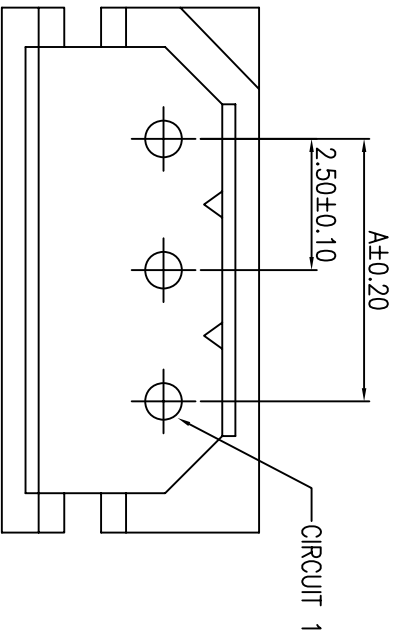
SYM		DISCRIPTION		DATE		APPROVED		DATE		APPROVED	
Δ											
Δ											

****CUSTOMER DRAWING FOR REFERENCE ONLY, SAMPLES APPROVAL ARE REQUIRED!!**

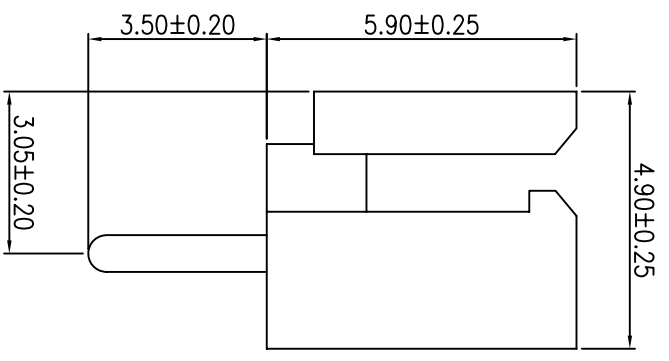
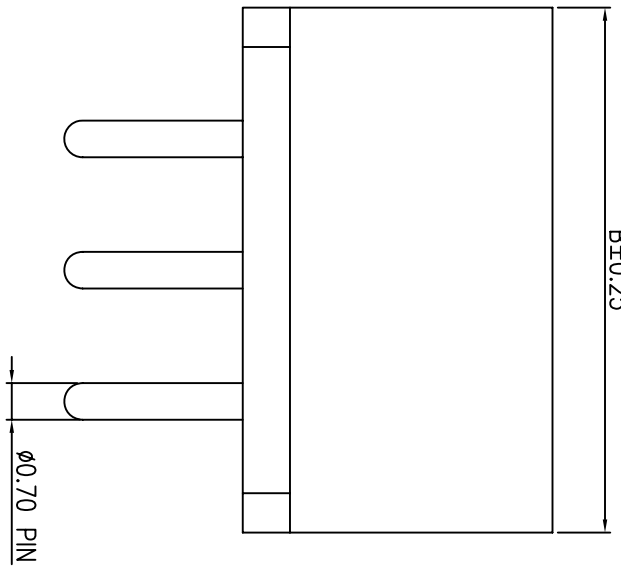
064

ORDER INFORMATION:

MCs006-PXXT
 MC: WAFER SERIES
 S: 2.50mm PITCH
 006: SERIES NO.
 P: PCB TYPE, STRAIGHT TYPE
 XX: NO. OF CONTACTS
 T: TERMINAL PLATING, TIN PLATING

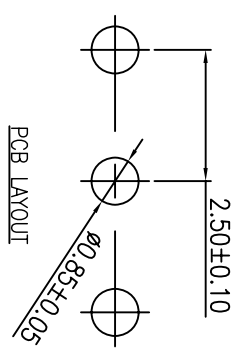


B±0.25



SPECIFICATIONS
 CURRENT RATING : 3A, AC, DC
 VOLTAGE RATING : 250V AC/DC
 TEMPERATURE RANGE : -25°C ~ +85°C
 CONTACT RESISTANCE : 20mΩ MAX.
 INSULATION RESISTANCE : 1000 MΩ MIN
 WITHSTANDING VOLTAGE : 1000V AC/MINUTE
 PIN MATERIAL: BRASS/TIN-PLATED
 MATERIAL : NYLON 66 UL 94V-0
 PANTONE COLOR: 7506C

PART NO.	CONTACTS	DIMENSION	
		A	B
MCs006-P02T	1X2	2.50	7.50
MCs006-P03T	1X3	5.00	10.00
MCs006-P04T	1X4	7.50	12.50
MCs006-P05T	1X5	10.00	15.00
MCs006-P06T	1X6	12.50	17.50
MCs006-P07T	1X7	15.00	20.00
MCs006-P08T	1X8	17.50	22.50
MCs006-P09T	1X9	20.00	25.00
MCs006-P10T	1X10	22.50	27.50
MCs006-P11T	1X11	25.00	30.00
MCs006-P12T	1X12	27.50	32.50
MCs006-P13T	1X13	30.00	35.00
MCs006-P14T	1X14	32.50	37.50
MCs006-P15T	1X15	35.00	40.00
MCs006-P16T	1X16	37.50	42.50



MATING		HOUSING		TERMINAL		MODEL	
TOLERANCES UNLESS OTHERWISE SPECIFIED ±0.25		MCs006-XX-H		MCs006-T		MCs006-P__T	
SYMBOL	UNIT	SCALE	CHECKED	APPROVALS	DRAWN	DATE	TITLE
Δ	mm	10/1	KEN		SNOW	14/MAR/07	WAFER
							NO.

MMT CORPORATION