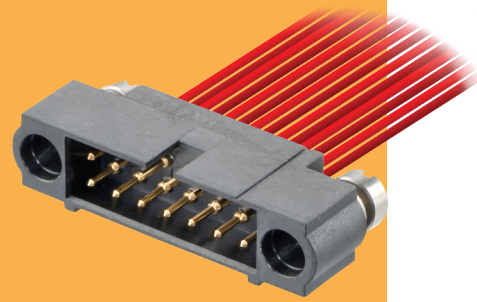


Datamate J-Tek Connectors

Male Crimp Kit Reverse Fix

- Allows for further flexibility in system design.
- Part numbers are for a complete kit of a housing and the applicable number of contacts.
- Crimp contacts are rear insertable and replaceable.
- Mates with female Datamate J-Tek connectors with compatible Reverse Fix jackscrews.



REVERSE FIX		CALCULATION													
		A	$B + 12$												
		B	Total no. of contacts - 2												
		C	$B + 7$												
TOOLS		WIRE STRIPPING DETAILS													
<p>Recommended Crimp Tool - M22520/2-01</p> <p>Positioner - Z80-193</p> <p>Contact Insertion/Removal Tool - Z80-280</p> <ul style="list-style-type: none"> Spare contacts shown on following pages. Instruction sheets available at www.harwin.com/instructions. 															
HOW TO ORDER															
M80 - 5XX XX 05															
<p>SERIES CODE</p> <table border="1"> <thead> <tr> <th colspan="2">TYPE</th> </tr> </thead> <tbody> <tr> <td>562</td> <td>Large Bore (22 AWG), Slotted Jackscrew</td> </tr> <tr> <td>563</td> <td>Small Bore (24-28 AWG), Slotted Jackscrew</td> </tr> <tr> <td>582</td> <td>Large Bore (22 AWG), Hex Socket Jackscrew</td> </tr> <tr> <td>583</td> <td>Small Bore (24-28 AWG), Hex Socket Jackscrew</td> </tr> </tbody> </table>		TYPE		562	Large Bore (22 AWG), Slotted Jackscrew	563	Small Bore (24-28 AWG), Slotted Jackscrew	582	Large Bore (22 AWG), Hex Socket Jackscrew	583	Small Bore (24-28 AWG), Hex Socket Jackscrew	<p>FINISH</p> <table border="1"> <tbody> <tr> <td>05</td> <td>Gold</td> </tr> </tbody> </table>		05	Gold
TYPE															
562	Large Bore (22 AWG), Slotted Jackscrew														
563	Small Bore (24-28 AWG), Slotted Jackscrew														
582	Large Bore (22 AWG), Hex Socket Jackscrew														
583	Small Bore (24-28 AWG), Hex Socket Jackscrew														
05	Gold														
		<p>TOTAL NO. OF CONTACTS</p> <p>04, 06, 08, 10, 12, 14, 20, 26, 34, 42, 50</p>													

All dimensions in mm.