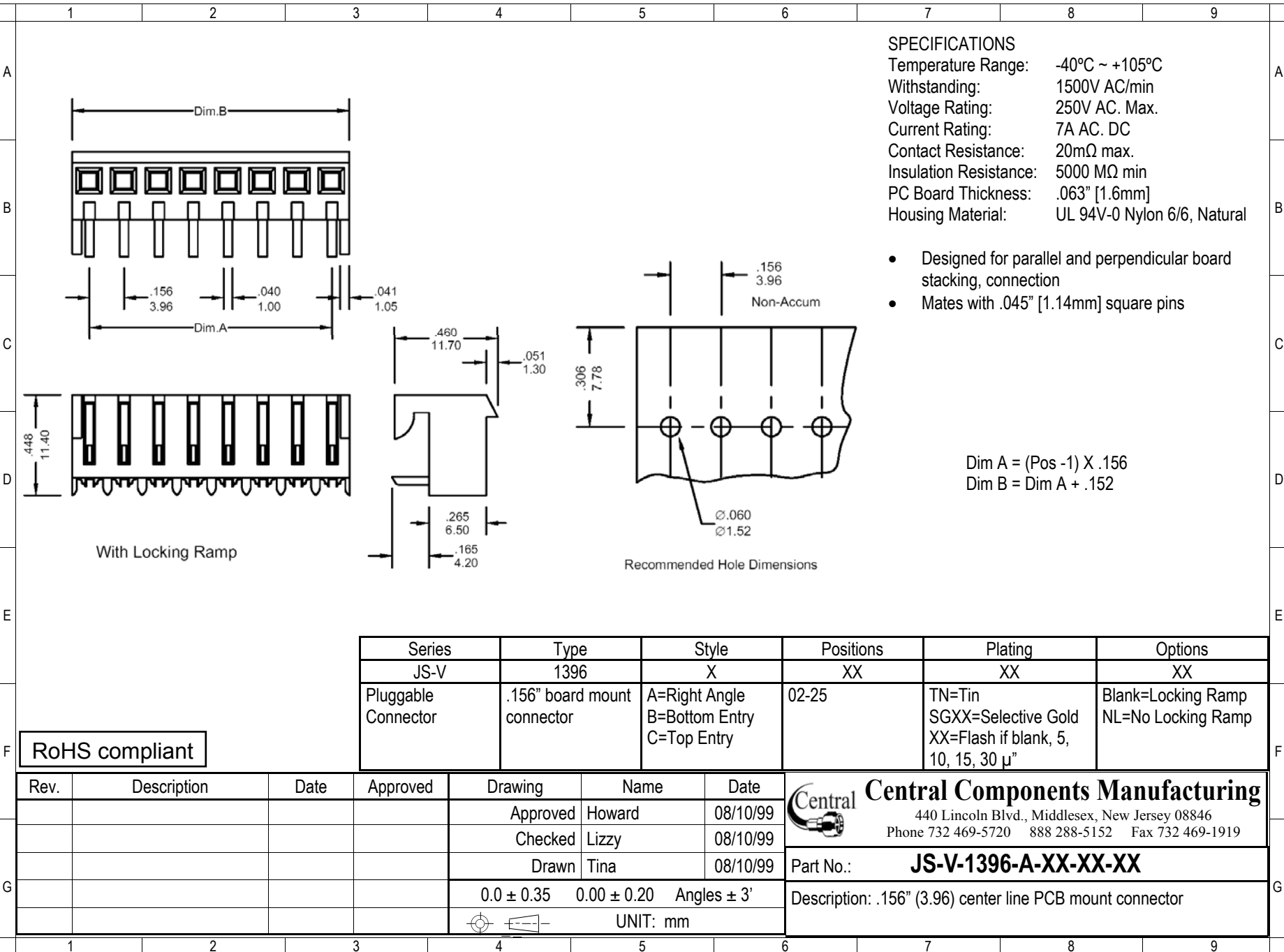


**SPECIFICATIONS**

Temperature Range: -40°C ~ +105°C  
 Withstanding: 1500V AC/min  
 Voltage Rating: 250V AC. Max.  
 Current Rating: 7A AC. DC  
 Contact Resistance: 20mΩ max.  
 Insulation Resistance: 5000 MΩ  
 PC Board Thickness: .063" [1.6mm]  
 Housing Material: UL 94V-0 Nylon 6/6, Natural

- Designed for parallel and perpendicular board stacking, connection
- Mates with .045" [1.14mm] square pins

Dim A = (Pos - 1) X .156  
 Dim B = Dim A + .152



Series	Type	Style	Positions	Plating	Options
JS-V	1396	X	XX	XX	XX
Pluggable Connector	.156" board mount connector	A=Right Angle B=Bottom Entry C=Top Entry	02-25	TN=Tin SGXX=Selective Gold XX=Flash if blank, 5, 10, 15, 30 μ"	Blank=Locking Ramp NL=No Locking Ramp

RoHS compliant

Rev.	Description	Date	Approved	Drawing	Name	Date
				Approved	Howard	08/10/99
				Checked	Lizzy	08/10/99
				Drawn	Tina	08/10/99
				0.0 ± 0.35	0.00 ± 0.20	Angles ± 3'
				UNIT: mm		

**Central Components Manufacturing**  
 440 Lincoln Blvd., Middlesex, New Jersey 08846  
 Phone 732 469-5720 888 288-5152 Fax 732 469-1919

Part No.: **JS-V-1396-A-XX-XX-XX**

Description: .156" (3.96) center line PCB mount connector