

REV: BW

TABLE 2				
LEAD STYLE	PIN A	PIN B	"C"	"D" REF
-01-SH	T-1S13-20-X-2	N/A	.126 [3.20]	.118 [3.00]
-01-DH	T-1S13-09-X-2	T-1S13-09-X-2	.126 [3.20]	.11 [2.8]
-01-MT	T-1S13-09-X-2	T-1S13-09-X-2	.126 [3.20]	NA
-02-MT	T-1S13-09-X-2	T-1S13-09-X-2	.175 [4.45]	NA
-02-SH	T-1S13-02-X-2	N/A	.175 [4.45]	.123 [3.12]
-02-DH	T-1S13-09-X-2	T-1S13-09-X-2	.175 [4.45]	.11 [2.8]

- NOTES:
- PUSH OUT FORCE SHALL BE 2 LB. MIN.
  - Ⓢ REPRESENTS A CRITICAL DIMENSION
  - ALL DIMENSIONS IN BRACKETS [ ] TO BE IN MILLIMETERS.
  - NOTE 4 DELETED.
  - NOTE 5 DELETED.
  - NOTE 6 DELETED.
  - FOR NON -LG & -A, USE 2TS-XX-D.
  - COPLANARITY TO INCLUDE INSULATOR.
  - .002 MAX BURR ALLOWED.
  - .015 MAX OUT FLASH ALLOWED. (NO FLASH TO BE ON BOTTOM OF BODY)
  - MT OPTION: PIN B TO BE FLUSH TO +/- .003" A LINE MADE BY THE BODY  
-DH OPTION: PIN A TO BE FLUSH TO .003 ABOVE A LINE MADE BY THE BODY  
PIN B TO BE FLUSH TO .001" BELOW/.003" ABOVE A LINE MADE BY THE BODY  
-SH OPTION: PIN A TO BE FLUSH TO +/- .003" A LINE MADE BY THE BODY

DIMENSIONS ARE IN INCHES		UNLESS OTHERWISE NOTED		TOLERANCES ARE:		ANGLES		TITLE:	DWG NO:
ONE PLACE DECIMALS: ± .1	THREE PLACE DECIMALS: ± .005	FOUR PLACE DECIMALS: ± .0020		± 5°				2mm HORIZONTAL TERMINAL SURFACE MOUNT STRIP ASSEM	MMT-1XX-XX-XX-XX-XXX-X-XX
TWO PLACE DECIMALS: ± .01									MMT-1XX-XX-XX-XX-XXX-X-XX

MMT-1XX-XX-XX-XX-XX-XXX-X-XX

- NO. OF POSITIONS PER ROW (-02 THRU -50)
- LEAD STYLE
- 01: .126 [3.20] POST
  - 02: .175 [4.45] POST (SEE TABLE 2)
- PLATING SPECIFICATION
- H: HEAVY GOLD
  - S: SELECTIVE
  - L: LIGHT SELECTIVE
  - F: FLASH SELECTIVE
  - T: TIN
  - SM: SELECTIVE GOLD, MATTE TIN TAIL
  - LM: LIGHT SELECTIVE GOLD, MATTE TIN TAIL
  - FM: FLASH SELECTIVE GOLD, MATTE TIN TAIL
  - TM: MATTE TIN
  - P: GOLD/PdNi SELECTIVE
- ROW OPTION
- SH: SINGLE (2TS-XX-SH-X-XX)
  - DH: DOUBLE (2TS-XX-DH-XX-XX) (SEE NOTE 7)
  - FOR 2 POSITION WITH -A OPTION, USE ASP-80676-01-S.
  - MT: MIXED TECHNOLOGY (2TS-XX-DH-XX-XX) (NOT AVAILABLE WITH -LC, OR -A OPTIONS)
- OPTION
- TR: TAPE AND REEL (SEE PAGE 3)
  - P: PICK & PLACE PAD (USE PPP-13) (3 POSITION MINIMUM)
  - XXX: POLARIZED POSITION -XXX SPECIFIES POSITION OMITTED (SEE POLARIZATION VIEW)
  - LC: LOCKING CLIP (FOR -DH USE 2TS-XX-DH-LC-XX) (SEE NOTE 7) (FOR -SH USE 2TS-XX-SH)
  - A: ALIGNMENT PIN (FOR -DH USE 2TS-XX-DH-A-XX) (SEE NOTE 7) (FOR -SH USE 2TS-XX-SH-A-XX)
  - K: POLYAMIDE FILM PAD (SEE SHT. 2) (3 POS. MIN)

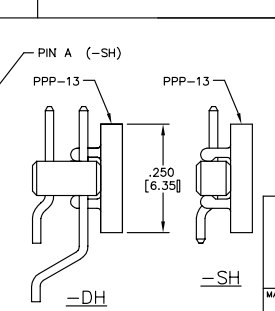
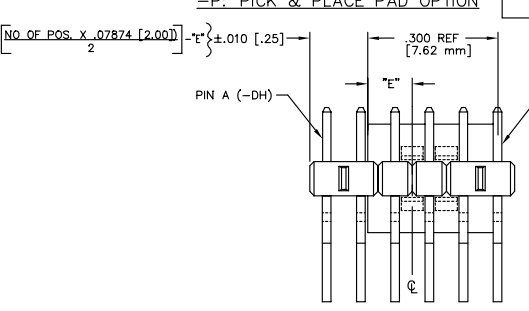
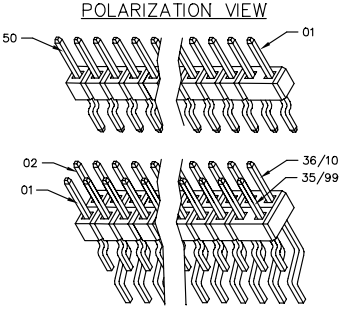
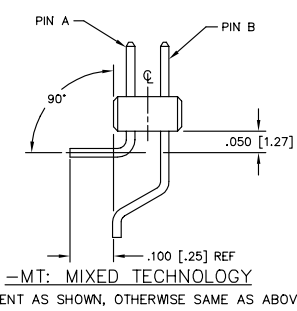
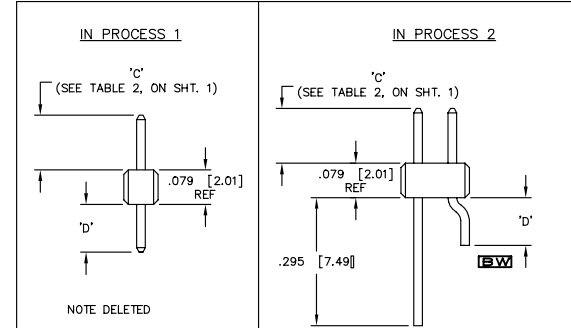
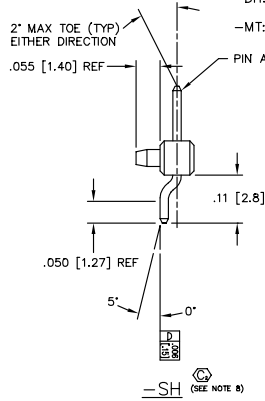
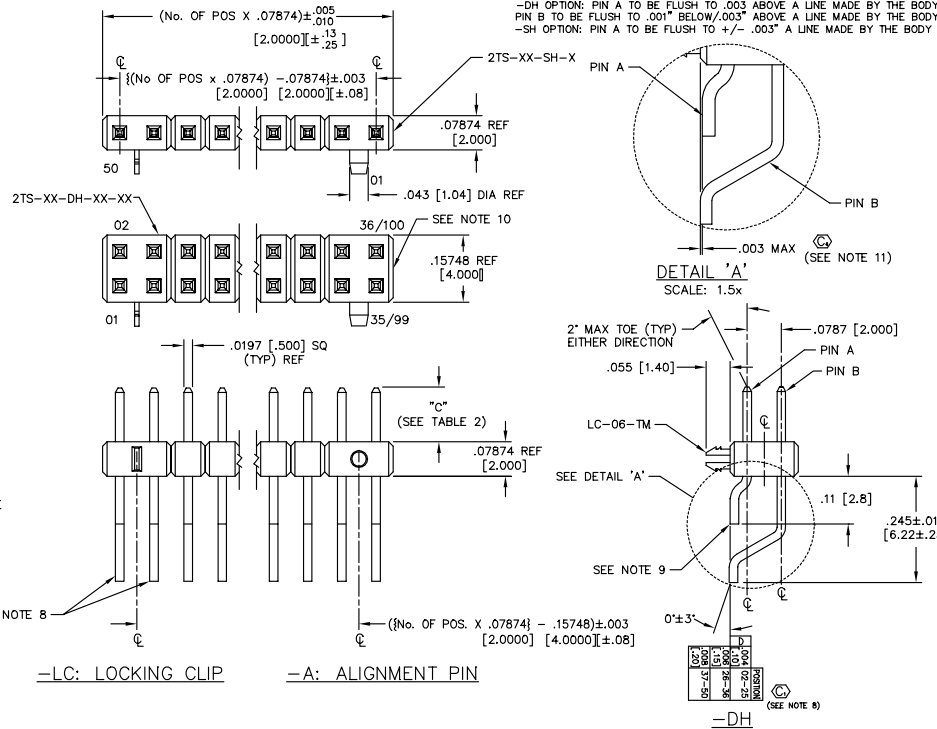


TABLE 1	
POS.	"E"
ODD	.150 [3.81]
EVEN	.111 [2.82]

PROPRIETARY NOTE  
THIS DOCUMENT CONTAINS INFORMATION OF A CONFIDENTIAL NATURE AND IS THE PROPERTY OF SAMTEC INC. IT IS TO BE KEPT CONFIDENTIAL AND NOT TO BE REPRODUCED OR TRANSMITTED IN ANY FORM OR BY ANY MEANS, ELECTRONIC OR MECHANICAL, INCLUDING PHOTOCOPYING, RECORDING, OR BY ANY INFORMATION STORAGE AND RETRIEVAL SYSTEM. WITHOUT THE WRITTEN PERMISSION OF SAMTEC INC.