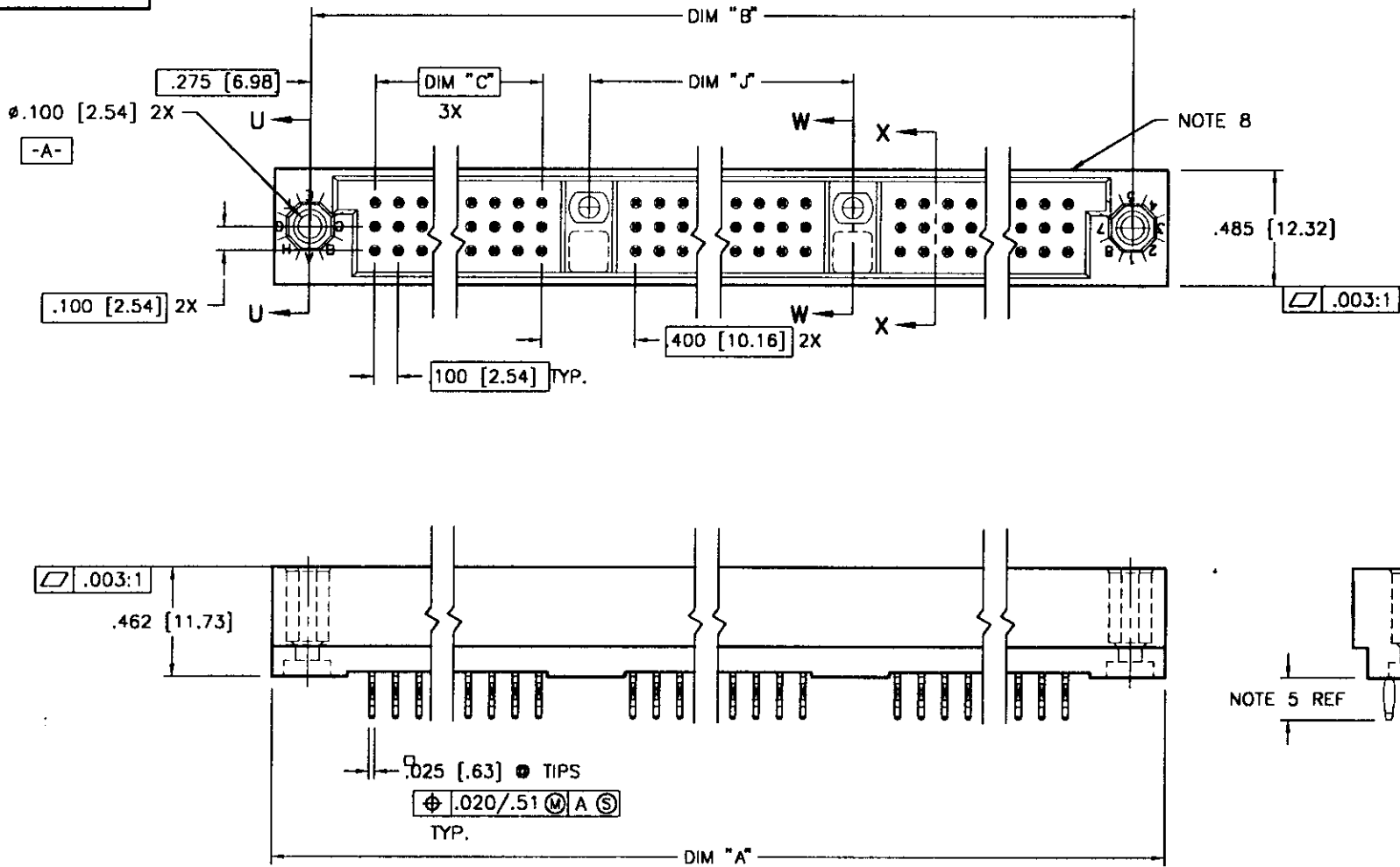


Tous droits strictement réservés. Reproduction ou communication à des tiers interdite sous quelque forme que ce soit sans autorisation écrite du propriétaire.
 Propriété de ©BERG ELECTRONICS. Droits de reproduction BERG ELECTRONICS INC.

All rights strictly reserved. Reproduction or issue to third parties in any form whatever is not permitted without written authority from the proprietor.
 Property of ©BERG ELECTRONICS Copyright BERG ELECTRONICS INC.

BERG
 ELECTRONICS

PRODUCT NO.
 51055-XXXXX



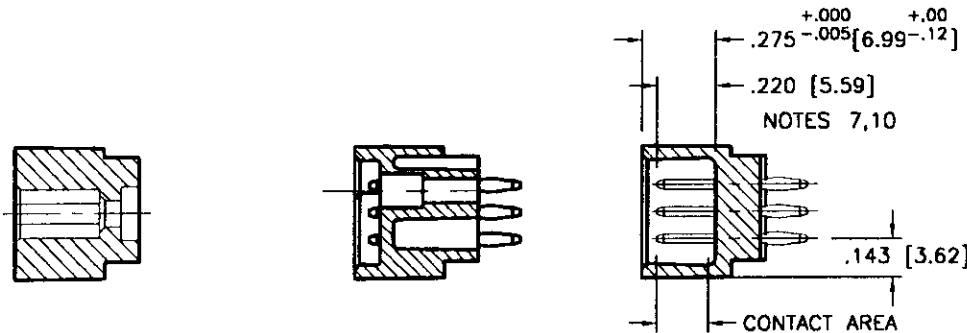
mat'l. code NOTE 3				tolerances unless otherwise specified		CUSTOMER COPY	BERG ELECTRONICS
l/r	ecn no	dr	date	linear	.XX ± .01 / X ± .3		
A	V61407	MSC	9/24/96		.XXX ± .005 / .XX ± .13	INCH/MM	3 ROW, 2 GUIDE BELLCORE HEADER
				angles	.XXXX ± .0020 / .XXX ± .051		
				dr	0° ± 2'	1.5:1	code
				enfr	M.CLOUSER 9/24/96		size
				chr	S.CLARK 9/24/96		51055
				appd	S.CLARK 9/24/96		sheet
sheet	revision	A	A				1 of 2
index	sheet	1	2				

Tous droits strictement réservés. Reproduction ou communication à des tiers interdite sous quelque forme que ce soit sans autorisation écrite du propriétaire. Propriété de ©BERG ELECTRONICS. Droits de reproduction BERG ELECTRONICS INC.

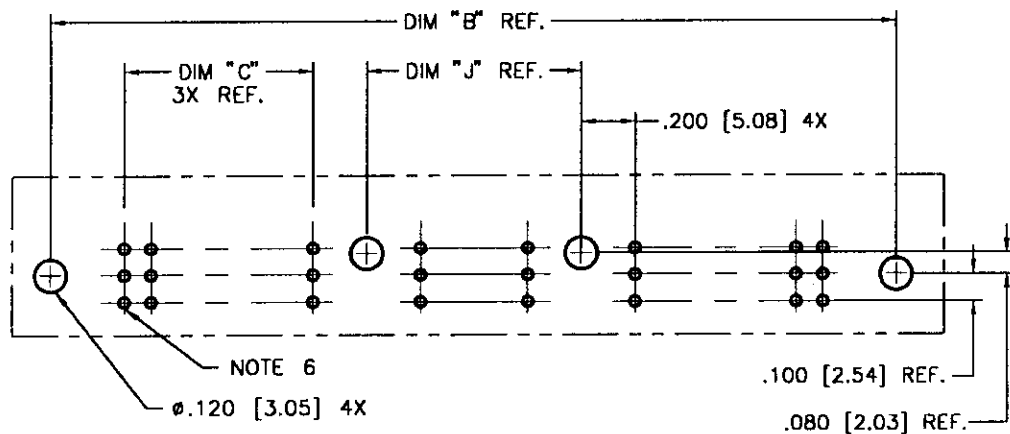
All rights strictly reserved. Reproduction or issue to third parties in any form whatever is not permitted without written authority from the proprietor. Property of ©BERG ELECTRONICS Copyright BERG ELECTRONICS INC.

BERG
ELECTRONICS

PRODUCT NUMBER	DIM.	LENGTH FORMULAS
51055-XXXXX	DIM "A"	.100/2.54 x NO. OF COLUMNS + 1.350/34.29
	DIM "B"	.100/2.54 x NO. OF COLUMNS + 1.050/26.67
	DIM "C"	.100/2.54 x NO. OF COLUMNS DIVIDED BY 3 - .100/2.54
	DIM "J"	.100/2.54 x NO. OF COLUMNS DIVIDED BY 3 + .300/7.62



SECTION U-U SECTION W-W SECTION X-X



RECOMMENDED PCB LAYOUT
(ALL HOLES LOCATED ON .100/2.54 GRID UNLESS OTHERWISE SPECIFIED)

NOTES:

- PRODUCT NUMBERING CODE:
51055 - A XXX X
TAIL LENGTH(NOTE 5)
NO. OF POSITIONS(NOTE 2)
PLATING(NOTE 4)
BASE NUMBER
- THIS PRODUCT IS CONFIGURED IN SIZES OF 30 thru 150 COLUMNS IN INCREMENTS OF ONE.
i.e.:30,33,36,39,.....147,150.
- HOUSING MATERIAL: GLASS FILLED PPS.
PIN MATERIAL: PHOS BRONZE
- PLATING:
A = 50u" Ni UNDER ALL WITH 30u" Au ON CONTACT AREAS, SnPb ON PCB INTERFACE AND Au FLASH ON ALL OTHER AREAS.
- TAIL LENGTH OPTIONS:
A = .177/4.5
G = .250/6.35
C = .533/13.54
D = .733/18.62
- Ø.0453/1.151 DRILLED HOLE PLATED WITH .0003/.007 MIN. SnPb OVER .001/.03 to .003/.08 Cu. PLATING TO ACHIEVE A Ø.040±.003/1.02±.08 HOLE.
- TO ASSURE PROPER INSTALLATION: BERG TOOLING, AS SPECIFIED IN INSTRUCTION MANUAL 155915-001 MUST BE USED. PIN MATING LENGTH WILL BE ±.002/.05 AFTER INSTALLATION.
- "BERG" NAME, PART NUMBER AND LOT CODE TO APPEAR ON THIS SURFACE PER BUS-12-108.
- FOR DOCUMENTATION MENU, SEE BERG BUS-01-057.
- REFERENCE 51061 FOR F.M.L.B. AVAILABLE OPTIONS AND WORKSHEET.

mat'l. code				tolerances unless otherwise specified			CUSTOMER COPY		BERG ELECTRONICS	
NOTE 3									title	
ltr	ecn no	dr	date	linear	.XX ±.01/X ±.3		projection		3 ROW, 2 GUIDE BELLCORE HEADER	
A					.XXX ±.005/XX ±.13		INCH/MM		product family HPC code -	
				angles	.XXXX ±.0020/XXX ±.051		scale		size dwg no	
				dr	M.CLOUSER	9/24/96	1.5:1		A 51055	
				engr	S.CLARK	9/24/96			sheet 2 of	
				chr	S.CLARK	9/24/96				
				appd	S.CLARK	9/24/96				
sheet index	revision sheet									