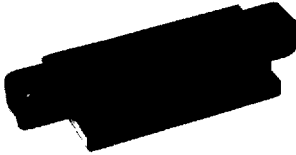


## .100 [2.54] Centerline Double Row Receptacle Housings

### Polarized Housings with Detents



**Material:**

Black thermoplastic, flame retardant, 94V-0 rated

**Related Product Data:**

**Performance Characteristics**—page 6

**FFC Cable**—page 32

**Receptacle Contacts:**

Strip—page 33

Round Wire—page 72

**Maleable Pin Housings**—

pages 57 & 58

**Maleable Headers**—page 61

**Accessories:**

Jackscrews—pages 74 & 75

Keying Plugs—page 73

**Application Tooling**—

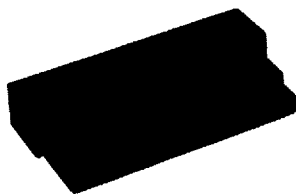
pages 76 & 77

**Technical Documents:**

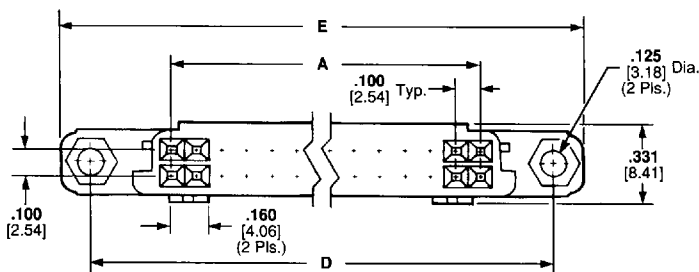
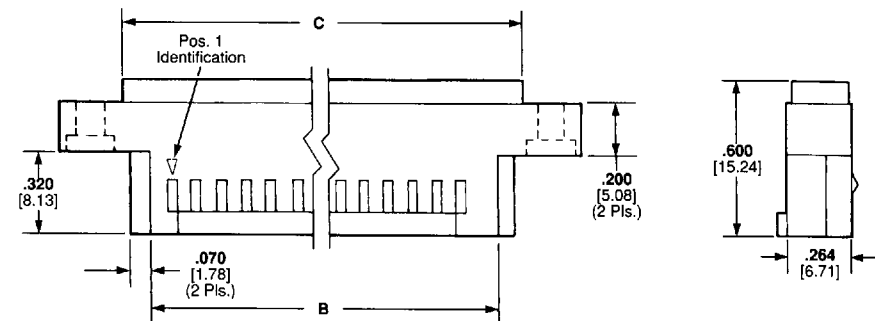
Page 85

**Product Specifications**—108-9024

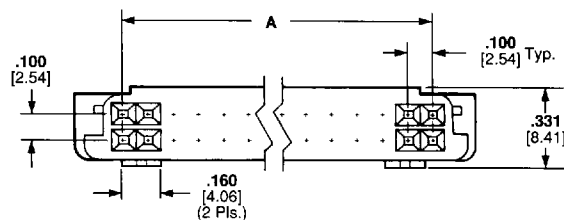
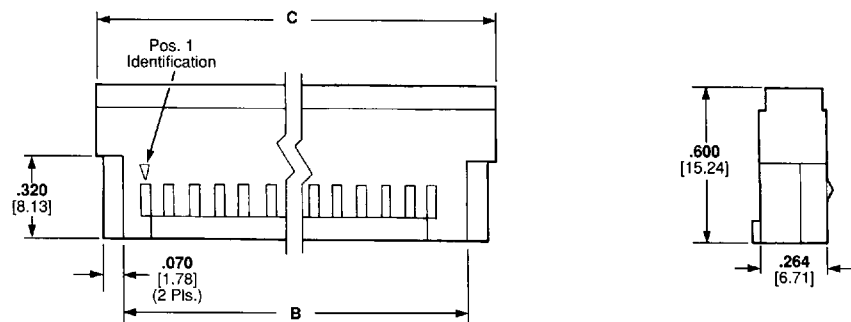
**Application Specifications**—114-16015



### With Mounting Ears



### Without Mounting Ears

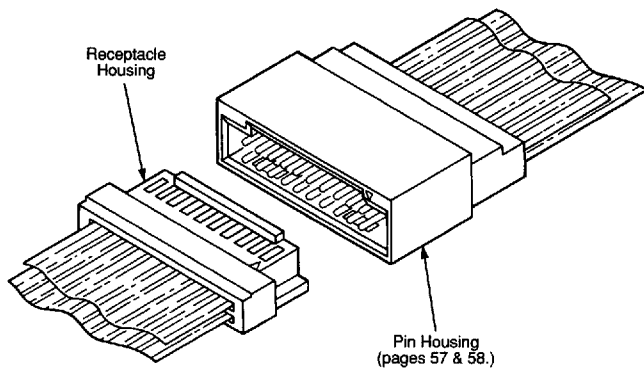


.100 [2.54] Centerline Products  
Double Row Receptacle Housings

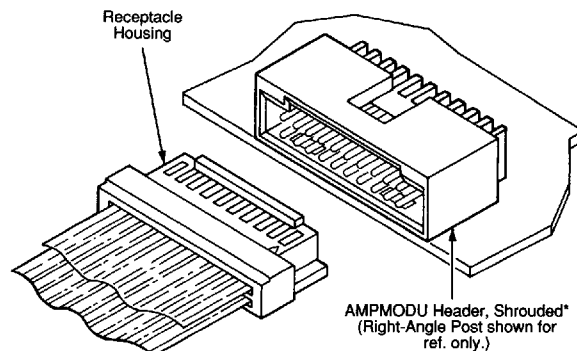
## .100 [2.54] Centerline Double Row Receptacle Housings (Continued)

No. of Positions	Dimensions					Receptacle Housing Part No.		Extraction Tool No.
	A	B	C	D	E	With Mounting Ears Dimensions A-E	Without Mounting Ears Dimensions A, B, C Only	
6	.200 5.08	.340 8.64	.550 13.97	.810 20.57	1.060 26.92	88637-5	3-88179-2	2-91200-1
8	.300 7.62	.440 11.18	.650 16.51	—	—	—	4-88179-0	2-91200-4
10	.400 10.16	.540 13.72	.750 19.05	1.010 25.65	1.260 32	88637-7	3-88179-0	1-91200-9
12	.500 12.7	.640 16.26	.850 21.59	1.110 28.19	1.360 34.54	88637-1	3-88179-4	2-91200-2
16	.700 17.78	.840 21.34	1.050 26.67	1.310 33.27	1.560 39.62	88637-3	—	—
18	.800 20.32	.940 23.88	1.150 29.21	1.410 35.81	1.660 42.16	88637-9	1-88179-0	91200-1
20	.900 22.86	1.040 26.42	1.250 31.75	1.510 38.35	1.760 44.7	1-88637-1	88179-5	91200-5
24	1.100 27.94	1.240 31.5	1.450 36.83	1.710 43.43	1.960 49.78	1-88637-3	1-88179-4	91200-8
26	1.200 30.48	1.340 34.04	1.550 39.37	1.810 45.97	2.060 52.32	1-88637-5	1-88179-6	91200-9
28	1.300 33.02	1.440 36.58	1.650 41.91	1.910 48.51	2.160 54.86	1-88637-7	1-88179-8	1-91200-0
34	1.600 40.64	1.740 44.2	1.950 49.53	2.210 56.13	2.460 62.48	3-88637-7	3-88179-6	1-91200-5
36	1.700 43.18	1.840 46.74	2.050 52.07	—	—	—	2-88179-0	1-91200-4
38	1.800 45.72	1.940 49.28	2.150 54.61	2.410 61.21	2.660 67.56	2-88637-1	88179-6	91200-2
40	1.900 48.26	2.040 51.82	2.250 57.15	2.510 63.75	2.760 70.1	2-88637-3	2-88179-2	91200-6
44	2.100 53.34	2.240 56.9	2.450 62.23	2.710 68.83	2.960 75.18	2-88637-5	2-88179-4	1-91200-1
50	2.400 60.96	2.540 64.52	2.750 69.85	3.010 76.45	3.260 82.8	2-88637-7	1-88179-2	2-91200-0
58	2.800 71.12	2.940 74.68	3.150 80.01	3.410 86.61	3.660 92.96	2-88637-9	2-88179-6	91200-3
60	2.900 73.66	3.040 77.22	3.250 82.55	3.510 89.15	3.760 95.5	3-88637-1	88179-4	1-91200-8
66	3.200 81.28	3.340 84.84	3.550 90.17	3.810 96.77	4.060 103.12	3-88637-3	88179-8	91200-4
70	3.400 86.36	3.540 89.92	3.750 95.25	4.010 101.85	4.260 108.2	3-88637-5	—	91200-7

- Notes:**
1. All housings listed above have no markings, except for AMP and Pos. 1 Identification, which are molded into the housing. Housings with special markings can be made available, consult AMP Incorporated.
  2. Housing sizes smaller than 20-position have only one detent.
  3. Use Extraction Tool No. **91093-1** for round wire contacts.



Typical Cable-to-Cable Application

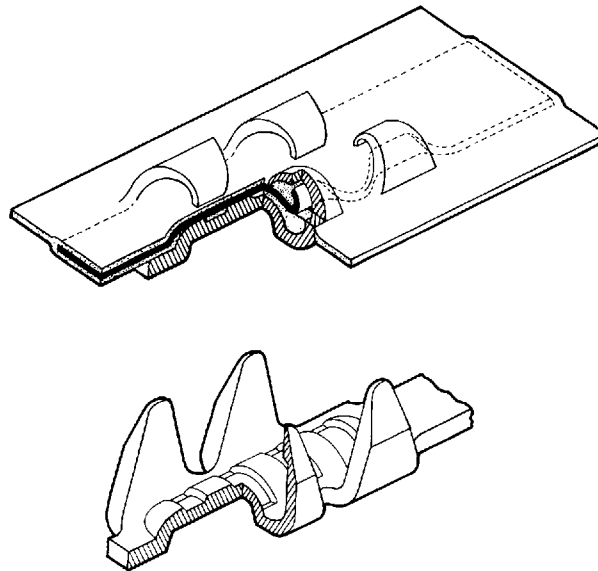


\*Mating AMPMODU shrouded headers have a .150 [3.81] end dimension (from inside shroud wall to centerline of first post).

Typical Cable-to-Board Application

## Flexible Film Products (Continued)

### Multiple-Crimp Contact Design (.100 [2.54] Centerline Shown)



The multiple-crimp design is featured on all .050 [1.27] and .100 [2.54] centerline flexible film contacts. Four crimping tines on each contact are used to penetrate the cable insulation and conductor, assuring optimum electrical and mechanical reliability. FFC contacts are supplied in strip form on reels for sequential termination.

#### **.050 [1.27] Centerline**

##### **Performance Characteristics:**

**Contact Current Rating**—  
1.5 amperes†

**Operating Temperature**—  
-55°C to +105°C

**Voltage Rating**—300 volts

**Insulation Resistance**—  
5000 megohms (min.)  
between contacts

†1.5 ampere rating is for single circuit.  
Multiple circuits, ambient temperature  
and conductor size affect current  
carrying capacity.

#### **.100 [2.54] Centerline**

##### **Performance Characteristics:**

**Contact Current Rating**—  
2 amperes†

**Operating Temperature**—  
-65°C to +105°C

**Voltage Rating**—300 volts

**Insulation Resistance**—  
5000 megohms (min.)  
between contacts

†2 ampere rating is for single circuit.  
Multiple circuits, ambient temperature  
and conductor size affect current  
carrying capacity.