

Tous droits strictement reserves. Reproduction ou communication a des tiers interdite sous quelque forme que ce soit sans autorisation ecrite du proprietaire. Propriete de c FCI. Droits de reproduction FCI.

FCI

All rights strictly reserved. Reproduction or issue to third parties in any form whatever is not permitted without written authority from the proprietor. Property of FCI. Copyright FCI.

PRODUCT NUMBER

5 2 6 0 X - X X X - X X X X

HOUSING COLOR
2= BLUE
3= BLACK

PLATING
S=15μ"[0.38μm]GOLD
ON CONTACT AREA
150μ"[3.81μm]TIN/LEAD ON TAIL

G=30μ"[0.76μm]GOLD
ON CONTACT AREA
150μ"[3.81μm]TIN/LEAD ON TAIL
ON TAIL

RETENTION
R= RETENTIVE LEG
NOTE 6

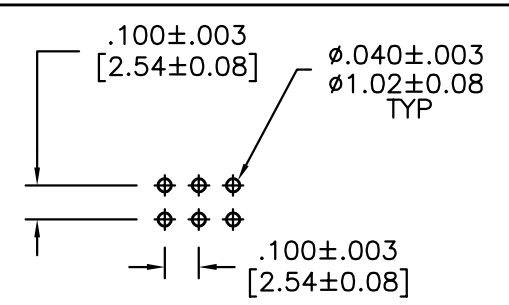
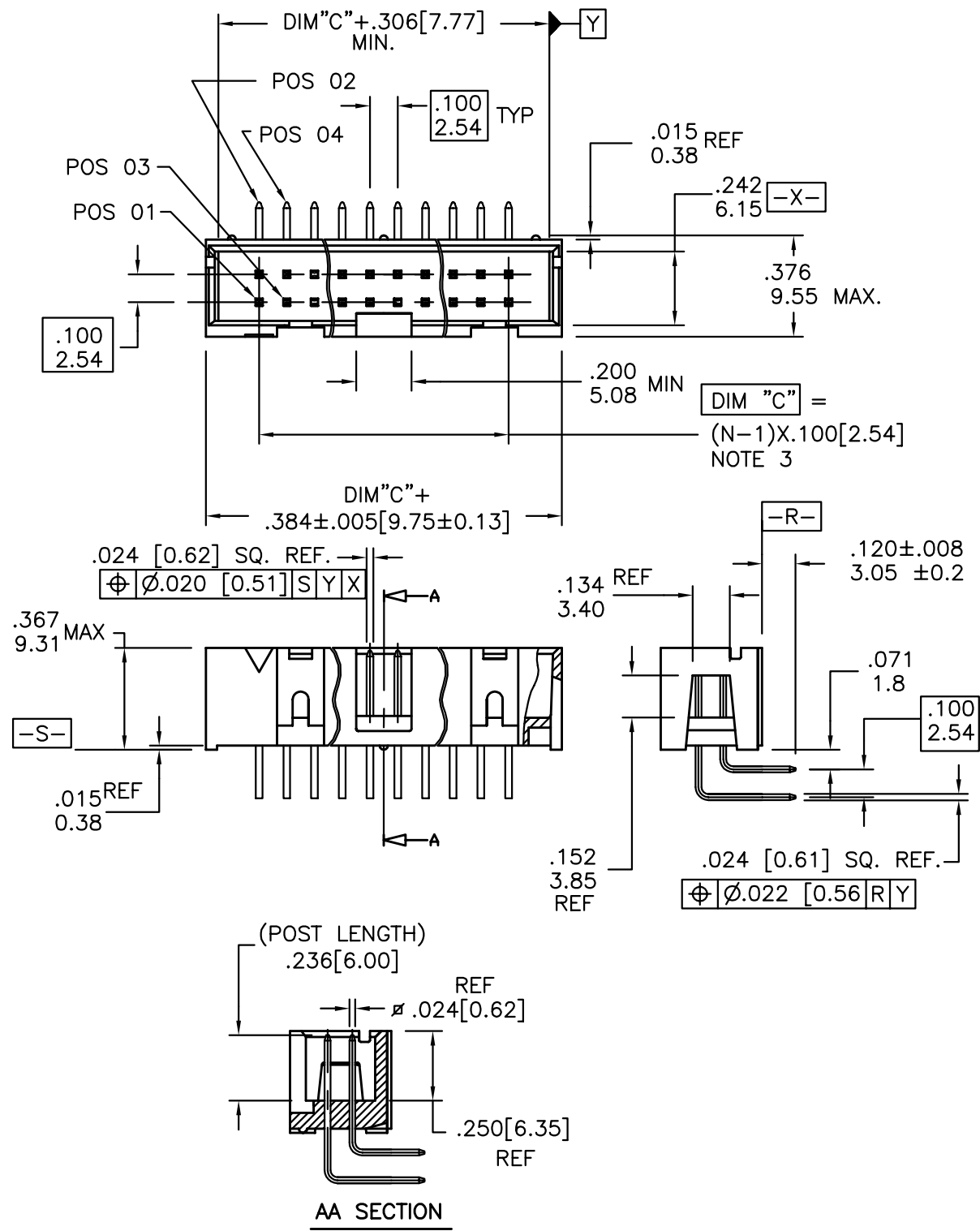
POLARIZATION
NOTE 8

TAIL
4= .120/3.05

TOTAL POSITIONS	
10	2 x 5
14	2 x 7
16	2 x 8
20	2 x 10
26	2 x 13
30	2 x 15
34	2 x 17
40	2 x 20
50	2 x 25
60	2 x 30

NOTES:

- HOUSING MAT'L: HIGH TEMPERATURE THERMOPLASTIC. UL94V-0
COLOR: BLUE or BLACK
- PIN MATERIAL: PHOSPHOR-BRONZE
- TO DETERMINE DIMENSIONS:
N = NUMBER OF POSITIONS
EXAMPLE: 10 POS., (N-1) x .100[2.54]=.900[22.87]
- 3 LBS./1.36 KG MIN. RETENTION
- PACKAGED IN TUBES.
- RETENTIVE LEG APPLICABLE TO TAIL LENGTH .120/3.05 ONLY.
RETENTION IS APPLIED TO TWO PINS PER PART, ADJACENT TO ONE ANOTHER.
5LB/2.3KG MAX INSERTION FORCE AND .25LB/1KG MIN RETENTION FORCE
PER RETENTIVE PIN USING .062/1.57 THICK CIRCUIT BOARD AND RECOMMENDED
HOLE PATTERN. RETENTIVE LOCATION AT THE DISCRETION OF THE MANUFACTURER.
OMIT FROM PRODUCT NUMBER IF THIS FEATURE IS NOT APPLICABLE.
- UNDER PLATING: 50μ"/1.27μm Ni.
- FOR POLARIZATION SPECIFY POSITION NUMBER (i.e.. A03=ROW A POS. 3)
TO OMIT PIN.
OMIT FROM PRODUCT NUMBER IF THIS FEATURE IS NOT APPLICABLE.



mat'l. code SEE NOTES 1 & 2				tolerances unless otherwise specified		CUSTOMER COPY	FCI www.fciconnect.com	
ltr	ecn no	dr	date	linear	angles			projection
A	V92809	DAI	08/24/99	.XX ± .01/0.3	0° ± 2°	INCH/MM	R/A LOW PROFILE HDR. .100/2.54mm SHROUDED	
B	V94314	DAI	11/03/99	.XXX ± .005/0.13				product family
C	V02361	AZ	09/27/00	.XXXX ± .0020/0.051		scale	QUICKIE	213
D	V21330	GIP	08/13/02	D.INGRAM 07/07/99		1:1	size	52602
				enr L.GREEN 07/07/99			dwg no	1 of 1
				chr L.GREEN 07/07/99				
				appd L.GREEN 07/07/99				
sheet index	revision	D					cage code	
	sheet	1					22526	

ACAD