

2.54mm (0.1") Female Header

(Double Row 8.5mm Base)

2235 Series

APPLICATION AND FEATURES

1. For standard profile application 8.5mm high.
2. Accept 0.64mm square pin with closed entry.
3. Different foot length for customer design choice.
4. Mate with pin header stick.

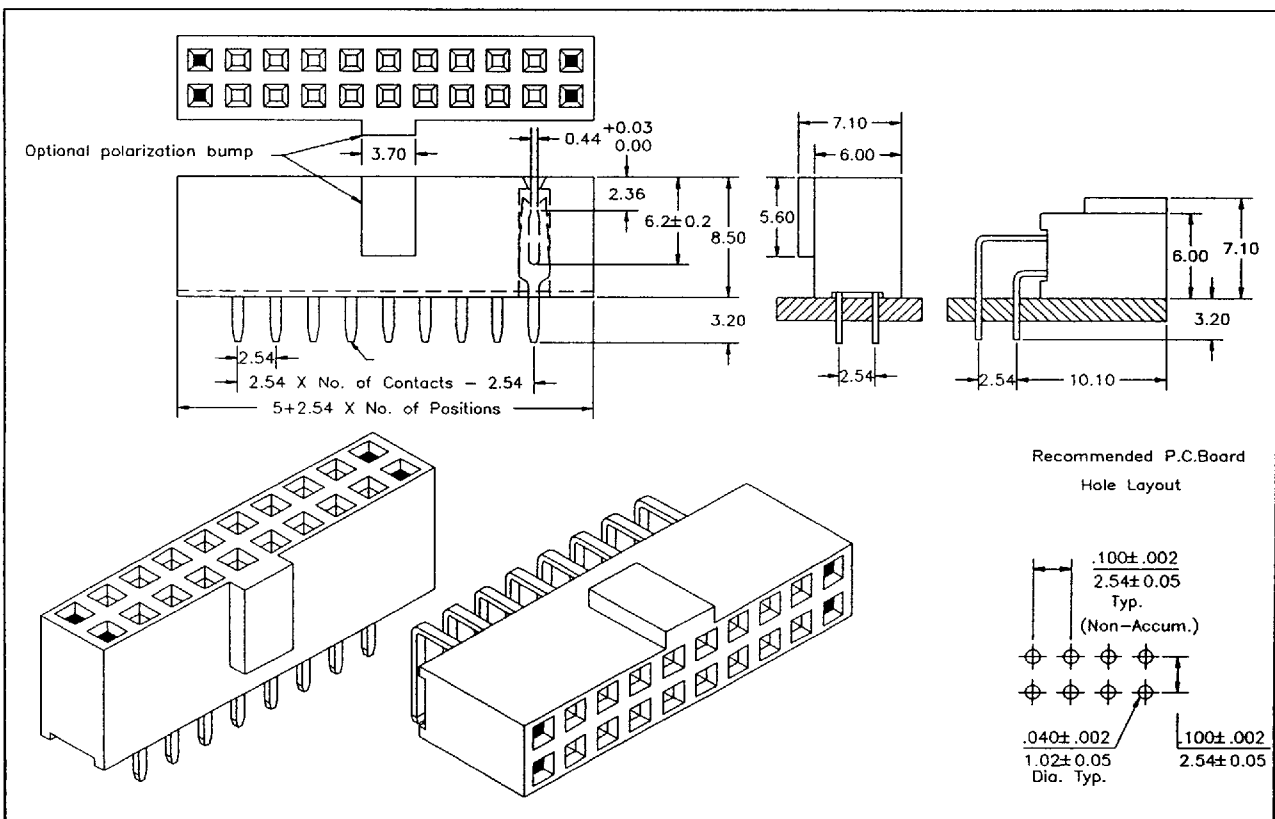
Finish: Tin, Gold or Selective gold.

© Note:

Selective gold: gold plated on contact area,
Tin on solder area

SPECIFICATIONS

Current Rating: 3 Amps
 Insulator resistance: 5000 Megohms Min.
 Contact resistance: 20 m ohm Max.
 Dielectric withstanding: AC 500 V
 Operating Temperature: -40° - +105°C
 Contact Material: Phosphor bronze
 Insulator Material: Polyester, UL 94V-0
 © Standard: P.B.T



Order Information 2235 Series

Example: 2235-20-R-02-3.2 X

0:W/O Polarization Bump
 1:W Polarization Bump

Series No.	Number of Contacts	Connector Type	Contact Plating	Pin Length mm
2235	06,08,10,14,16,20,24,26,30,34,40,44,48,50,60,64	Straight <input type="checkbox"/> S Right Angle <input type="checkbox"/> R	Tin Plated <input type="checkbox"/> 01 Gold Plated Flash <input type="checkbox"/> 02 10 μ" <input type="checkbox"/> 10 30 μ" <input type="checkbox"/> 30	S-L <input type="checkbox"/> 3.2 <input type="checkbox"/> 6.0 <input type="checkbox"/> 11.0 R-L <input type="checkbox"/> 3.2 <input type="checkbox"/> 8.0

SINGATRON ENT. CO., LTD. Tel.: (909) 464-1883 Fax.: (909) 464-1884

9011184 000090 0T2