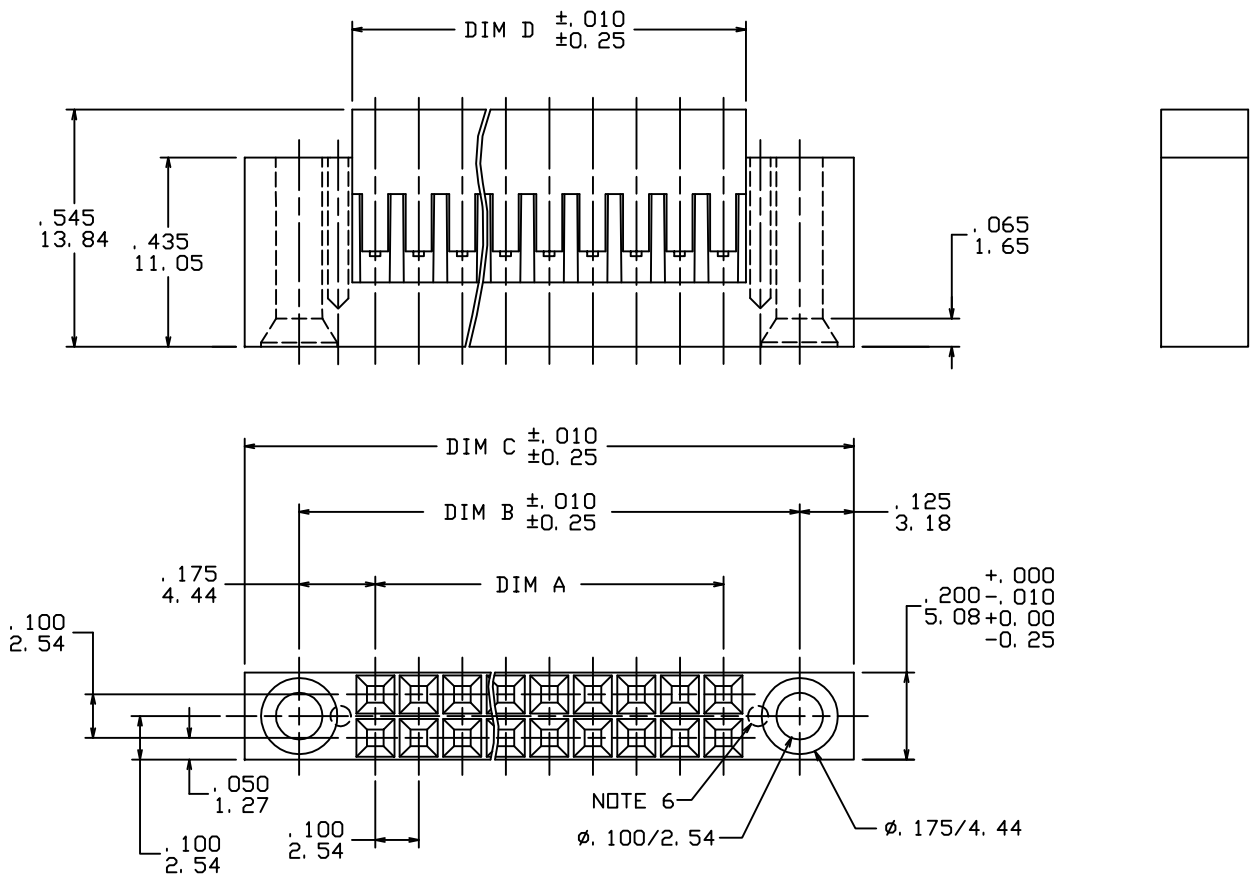


All rights strictly reserved. Reproduction or issue to third parties in any form whatever is not permitted without written authority from the proprietor. Property of FCI. Copyright FCI.

Tous droits strictement reserves. Reproduction ou communication a des tiers interdite sous quelque forme que ce soit sans autorisation ecrite du proprietaire. Propriete de c FCI. Droits de reproduction FCI.



PRODUCT NO.
 SEE TABLE



mat'l. code				tolerances unless otherwise specified		CUSTOMER COPY	 www.fciconnect.com
NOTE 1							
ltr	ecn no	dr	date	linear	.xx ±.01/.x±.3	projection	
A	V10874	MRC	04/10/91		.xxx ±.005/.xx±.13		
B	V50128	GAH	04/10/95		.xxxx ±.0020/.xxx±.051	INCH/MM	title MINI LATCH HOUSING .100/2.54 CC DBL. ROW BULKHEAD
C	V90989	RGD	07/28/99	angles	0° ±2°		
D	V03-1361	PJ	02/16/04	dr	M.CORNMAN 04/10/91	scale 2.5:1	product family MINI LATCH size dwg no A 78571
				enrg	C.TREXLER 04/10/91		
				chr	C.TREXLER 04/10/91		
				appd	C.TREXLER 04/10/91		
sheet index	revision sheet	D	D	D			code 22526
		1	2	3			sheet 213 1 of 3

ACAD

PDM: Rev:D

STATUS: Released

Printed: Apr 12, 2005

Tous droits strictement reserves. Reproduction ou communication a des tiers interdite sous quelque forme que ce soit sans autorisation écrite du propriétaire. Propriete de c FCI. Droits de reproduction FCI.



All rights strictly reserved. Reproduction or issue to third parties in any form whatever is not permitted without written authority from the proprietor. Property of FCI. Copyright FCI.

PRODUCT NO.	NO OF POS	DIM A	DIM B ± 0.10 ± 0.25	DIM C ± 0.10 ± 0.25	DIM D ± 0.10 ± 0.25
78571-004	2X2	.100/2.54	.450/11.43	.700/17.78	.205/5.21
-006	2X3	.200/5.08	.550/13.97	.800/20.32	.305/7.75
-008	2X4	.300/7.62	.650/16.51	.900/22.86	.405/10.29
-010	2X5	.400/10.16	.750/19.05	1.000/25.40	.505/12.83
-012	2X6	.500/12.70	.850/21.59	1.100/27.94	.605/15.37
-014	2X7	.600/15.24	.950/24.13	1.200/30.48	.705/17.91
-016	2X8	.700/17.78	1.050/26.67	1.300/33.02	.805/20.45
-018	2X9	.800/20.32	1.150/29.21	1.400/35.56	.905/22.99
-020	2X10	.900/22.86	1.250/31.75	1.500/38.10	1.005/25.53
-022	2X11	1.000/25.40	1.350/34.29	1.600/40.64	1.105/28.07
-024	2X12	1.100/27.94	1.450/36.83	1.700/43.18	1.205/30.61
-026	2X13	1.200/30.48	1.550/39.37	1.800/45.72	1.305/33.15
-028	2X14	1.300/33.02	1.650/41.91	1.900/48.26	1.405/35.69
-030	2X15	1.400/35.56	1.750/44.45	2.000/50.80	1.505/38.23
-032	2X16	1.500/38.10	1.850/46.99	2.100/53.34	1.605/40.77
-034	2X17	1.600/40.64	1.950/49.53	2.200/55.88	1.705/43.31
-036	2X18	1.700/43.18	2.050/52.07	2.300/58.42	1.805/45.85
-038	2X19	1.800/45.72	2.150/54.61	2.400/60.96	1.905/48.39
-040	2X20	1.900/48.26	2.250/57.15	2.500/63.50	2.005/50.93
-042	2X21	2.000/50.80	2.350/59.69	2.600/66.04	2.105/53.47
-044	2X22	2.100/53.34	2.450/62.23	2.700/68.58	2.205/56.01
-046	2X23	2.200/55.88	2.550/64.77	2.800/71.12	2.305/58.55
-048	2X24	2.300/58.42	2.650/67.31	2.900/73.66	2.405/61.09
-050	2X25	2.400/60.96	2.750/69.85	3.000/76.20	2.505/63.63
78571-052	2X26	2.500/63.50	2.850/72.39	3.100/78.74	2.605/66.17

NOTES

- ① MOLDING MATERIAL: MODIFIED POLYPHENYLENE ETHER
COLOR-BLACK; UL 94V-0.
- 2. TO BE MATED WITH PIN .225 \pm .015/5.72 \pm 0.38 LG.
- 3. THIS HOUSING IS INTENDED FOR USE WITH MINI PV™ TERMINAL WITH 22-36 AWG. WIRE AND C. T. W. MALE PIN WITH 22-36 AWG. WIRE.
- 4. FOR APPLICATION INFORMATION SEE TA-531.
- 5. SEE MINI PV™ TERMINAL TA-75 FOR CORRECT CRIMP HEIGHT FOR EACH DIFFERENT WIRE SIZE. IF THIS SPECIFICATION IS NOT MET LATCHING WILL NOT BE SATISFACTORY.
- ⑥ MOLD CORING HOLES (FOR MANUFACTURING PURPOSES ONLY).

mat'l. code —				tolerances unless otherwise specified				CUSTOMER COPY		www.fciconnect.com	
ltr	ecn no	dr	date	linear	.xx ± 0.1 / .x ± 3			projection		title	
D					.xxx ± 0.05 / .xx ± 13					MINI LATCH HOUSING	
					.xxxx ± 0.020 / .xxx ± 0.51					.100/2.54 CC DBL. ROW BULKHEAD	
				angles	0° ± 2 '				INCH/MM	product family	code
				dr	M.CORNMAN	04/10/91	MINI LATCH			213	
				enrg	C.TREXLER	04/10/91	size			dwg no	
				chr	C.TREXLER	04/10/91	78571			sheet	
				appd	C.TREXLER	04/10/91	scale	3:1	A	2 of 3	
sheet index	revision sheet										

cage code
22526

ACAD

PDM: Rev:D

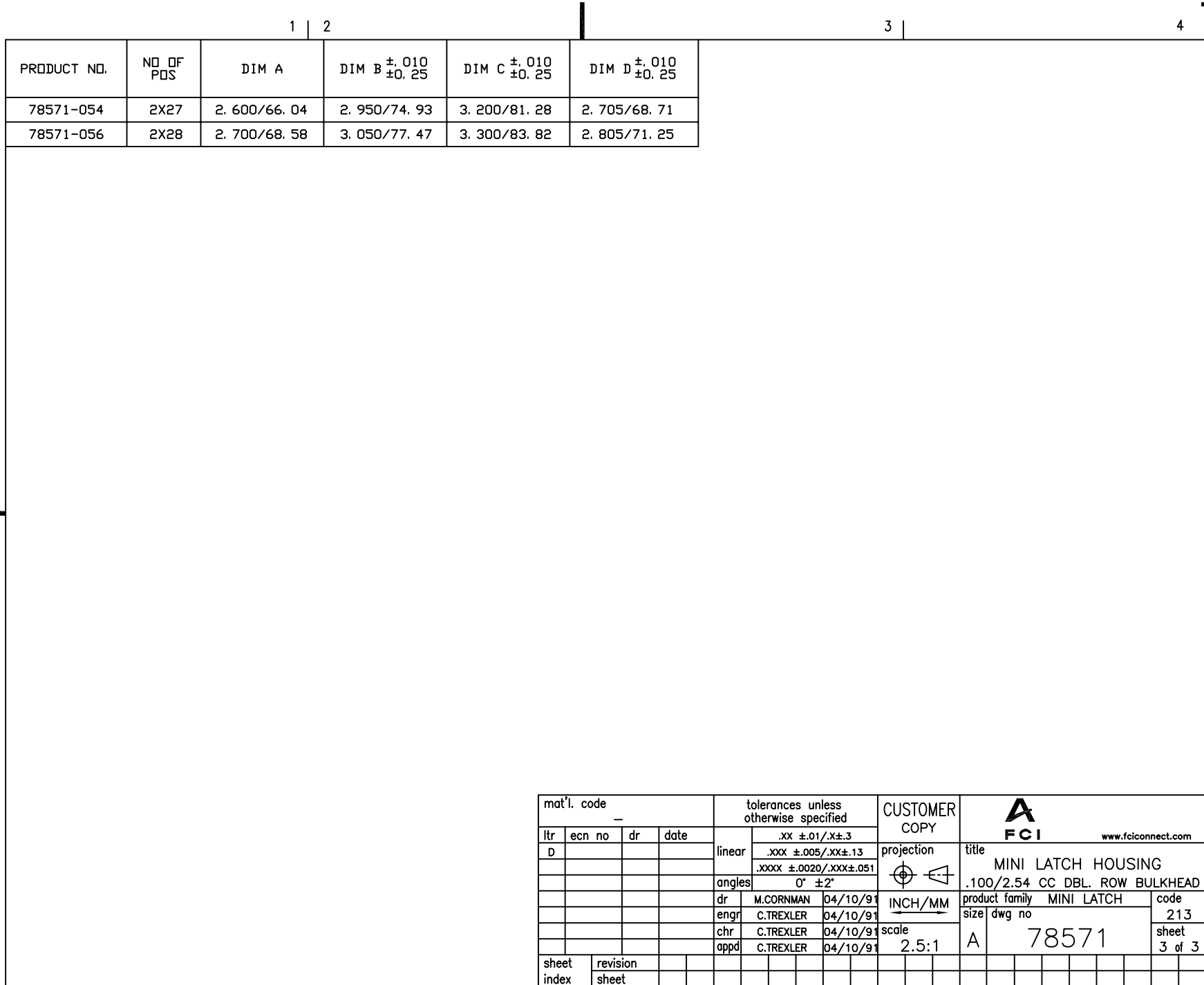
STATUS Released

Printed: Apr 12, 2005

Tous droits strictement reserves. Reproduction ou communication a des tiers interdite sous quelque forme que ce soit sans autorisation écrite du propriétaire. Propriete de c FCI. Droits de reproduction FCI.



All rights strictly reserved. Reproduction or issue to third parties in any form whatever is not permitted without written authority from the proprietor. Property of FCI. Copyright FCI.



PRODUCT NO.	NO OF POS	DIM A	DIM B ± 0.010 ± 0.25	DIM C ± 0.010 ± 0.25	DIM D ± 0.010 ± 0.25
78571-054	2X27	2.600/66.04	2.950/74.93	3.200/81.28	2.705/68.71
78571-056	2X28	2.700/68.58	3.050/77.47	3.300/83.82	2.805/71.25

mat'l. code				tolerances unless otherwise specified		CUSTOMER COPY		 www.fciconnect.com		
ltr	ecn no	dr	date	linear	.xx ± 0.1 /.x ± 3		projection	title		
D					.xxx ± 0.05 /.xx ± 1.3				MINI LATCH HOUSING	
					.xxxx ± 0.020 /.xxx ± 0.51				.100/2.54 CC DBL. ROW BULKHEAD	
				angles	0° ± 2 '		 INCH/MM	product family		
				dr	M.CORNMAN	04/10/91		MINI LATCH		code
				enr	C.TREXLER	04/10/91	scale	size		213
				chr	C.TREXLER	04/10/91		2.5:1	dwg no	
				appd	C.TREXLER	04/10/91	A		78571	3 of 3
sheet index		revision sheet								

cage code
22526

ACAD

PDM: Rev:D

STATUS: Released

Printed: Apr 12, 2005