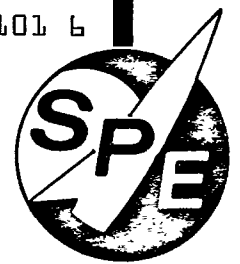


SPACE POWER ELECTRONICS

89 DE 8440355 0000101 6

**Hi-Rel PLANAR POWER — 5 AMP NPN**TO-5  
4W@T<sub>C</sub>=100°CTO-66  
30W@T<sub>C</sub>=100°C

TYPE	CASE	Breakdown Voltages				I <sub>C</sub> A	h <sub>FE</sub>		Cutoff Current	
		V <sub>CB</sub>	V <sub>CE</sub>	V <sub>EB</sub>	V <sub>CE</sub>		Min.	Max.	V <sub>CB</sub>	(uA)
2N2150	TO-111	125	80	8	5	1.0	20	60	100	5.0
2N2151	TO-111	125	80	8	5	1.0	40	120	100	5.0
2N2657	TO-5	80	60	8	2	1.0	40	120	60	0.1
2N2658	TO-5	100	80	8	2	1.0	40	120	60	0.1
2N2850-1	TO-5	100	80	5	1	1.0	40	120	80	0.1
2N2851-1	TO-5	100	80	5	1	1.0	40	120	80	0.1
2N2852-1	TO-5	100	80	5	1	1.0	20	60	80	0.1
2N2853-1	TO-5	60	40	5	1	1.0	40		40	0.1
2N2855-1	TO-5	60	40	5	1	1.0	40	120	40	0.1
2N2856-1	TO-5	60	40	5	1	1.0	20	60	40	0.1
2N2877	TO-111	80	60	8	2	1.0	20	60	60	0.1
2N2878	TO-111	80	60	8	2	1.0	40	120	60	0.1
2N2879	TO-111	100	80	8	2	1.0	20	60	60	0.1
2N2880	TO-111	100	80	8	2	1.0	40	120	60	0.1
2N2891	TO-5	100	80	5	2	1.0	50	150	60	0.1
2N2892	TO-111	100	80	5	2	1.0	30	90	60	0.1
2N2893	TO-111	100	80	5	2	1.0	50	150	60	0.1
2N2984	TO-5	185	120	8	5	1.0	20	60	150	10.0
2N2985	TO-5	155	80	8	5	1.0	40	120	120	10.0
2N2986	TO-5	185	120	8	5	1.0	40	120	150	10.0
2N3016	TO-5	100	50	4	5	1.0	60	150	30	0.1
2N3018	TO-61*	100	50	4	5	1.0	60	150	30	0.1
2N3418	TO-5	85	60	8	2	1.0	20	60	80	0.5
2N3419	TO-5	125	80	8	2	1.0	20	60	120	0.5
2N3420	TO-5	85	60	8	2	1.0	40	120	80	0.5
2N3421	TO-5	80	80	8	2	1.0	40	120	120	0.5
2N3506	TO-5	60	40	5	2	1.5	40	200	40	1.0
2N3507	TO-5	80	50	5	2	1.5	30	150	60	1.0
2N3619	TO-5	75	40	4	5	1.0	40		15	25.0
2N3623	TO-5	75	40	4	5	1.0	40		15	1.0
2N3627	TO-5	100	50	4	5	1.0	40		30	1.0
2N3675	TO-5	90	55	7	1	1.0	12	60	60	5.0mA
2N3676	TO-5	90	90	7	1	1.0	12	60	60	5.0mA
2N3744	TO-111*	60	40	7	5	1.0	20	60	60	0.1
2N3745	TO-111*	80	60	8	5	1.0	20	60	60	0.1
2N3746	TO-111*	100	80	8	5	1.0	20	60	60	0.1
2N3747	TO-111*	60	40	7	5	1.0	40	120	60	0.1
2N3748	TO-111*	80	60	8	5	1.0	40	120	60	0.1
2N3749	TO-111*	100	80	8	5	1.0	40	120	60	0.1
2N3750	TO-111*	60	40	7	5	1.0	100	300	60	0.1
2N3751	TO-111*	80	60	8	5	1.0	100	300	60	0.1
2N3752	TO-111*	100	80	8	5	1.0	100	300	60	0.1

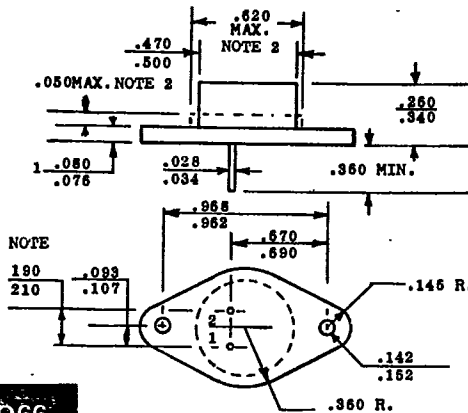
\*All leads electrically isolated from case FOR DETAILED SPECIFICATIONS CONTACT ENGINEERING

IPN= 8440355 0000102 169

SPPWE-SX



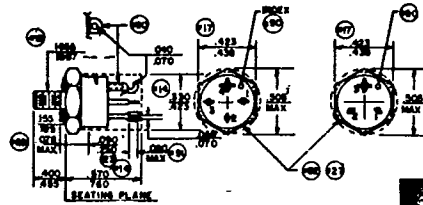
# Hi-Rel PLANAR POWER — 10 AMP PNP



**TO66**

NOTES FOR TO66:

1. Dimension does not include sealing flanges.
2. The outline contour is optional within zone defined by these dimensions.



**TO111**

- |                                    |                                     |                                    |
|------------------------------------|-------------------------------------|------------------------------------|
| TO-3<br>80W@T <sub>C</sub> =100°C  | TO-111<br>40W@T <sub>C</sub> =100°C | TO-5<br>5W@T <sub>C</sub> =100°C   |
| TO-61<br>50W@T <sub>C</sub> =100°C | TO-61*<br>50W@T <sub>C</sub> =100°C | TO-66<br>40W@T <sub>C</sub> =100°C |

TYPE	CASE	Breakdown Voltages		V <sub>EB</sub>	V <sub>CE</sub>	I <sub>C</sub> <sup>A</sup>	h <sub>FE</sub>		Cutoff Current	
		V <sub>CB</sub>	V <sub>CE</sub>				Min.	Max.	V <sub>CB</sub>	(uA)
2N3789	TO-3	-60	-60	-7.0	-2	-1.0	20	90	-60	5mA
2N3790	TO-3	-80	-80	-7.0	-2	-1.0	25	90	-80	5mA
2N3791	TO-3	-60	-60	-7.0	-2	-1.0	25	180	-60	5mA
2N3792	TO-3	-80	-80	-7.0	-2	-1.0	50	180	-80	5mA
2N5003	TO-111	-100	-80	-5.5	-5	-2.5	30	90	-80	1mA
2N5005	TO-111	-100	-80	-5.5	-5	-2.5	70	200	-80	1mA
2N5007	TO-61*	-100	-80	-5.5	-5	-5.0	30	90	-80	1mA
2N5009	TO-61*	-100	-80	-5.5	-5	-5.0	70	200	-80	1mA
2N5151	TO-5	-100	-80	-5.5	-5	-2.5	30	90	-80	1mA
2N5153	TO-5	-100	-80	-5.5	-5	-2.5	70	200	-80	1mA
2N5286	TO-111	-100	-100	-5.5	-5	-2.5	30	90	-80	1mA
2N5287	TO-111	-100	-100	-5.5	-5	-2.5	70	200	-80	1mA
2N5290	TO-61*	-100	-100	-5.5	-5	-5.0	30	90	-80	1mA
2N5291	TO-61*	-100	-100	-5.5	-5	-5.0	70	200	-80	1mA
2N5312	TO-61*	-80	-80	-6.0	-5	-10.0	30	90	-80	10
2N5314	TO-61*	-100	-100	-6.0	-5	-10.0	30	90	-100	10
2N5316	TO-61*	-80	-80	-6.0	-5	-5.0	30	90	-80	10
2N5318	TO-61*	-100	-100	-6.0	-5	-5.0	30	90	-100	10
2N5386	TO-61	-100	-80	-6.0	-4	-6.0	20	80	-100	10
2N5677	TO-61	-125	-100	-6.0	-5	-5.0	30	90	-125	1.0
2N5737	TO-3	-60	-60	-5.0	-5	-5.0	20	80	-40	500
2N5738	TO-3	-100	-100	-5.0	-5	-5.0	20	80	-80	500
2N5739	TO-66	-60	-60	-5.0	-5	-5.0	20	80	-40	500
2N5740	TO-66	-100	-100	-5.0	-5	-5.0	20	80	-80	500
2N5853	TO-61	-100	-80	-6.0	-5	-5.0	30	90	-60	500
2N5854	TO-61	-100	-80	-6.0	-5	-5.0	30	90	-60	500

\*All leads electrically isolated from case

FOR DETAILED SPECIFICATIONS CONTACT ENGINEERING