

FEATURES AND SPECIFICATIONS

Features and Benefits

- Sizes 6 to 72 circuits
- Robotically insertable and compatible
- Board retention pegs hold header in place until they are permanently secured by soldering
- Latch window retains modular connector assemblies after mating
- Standoffs minimize flux retention
- Round PC tails allow smaller PCB holes and aid robotic insertion
- Drawn .025" square wire provides 4-sided smooth surface for quality interface

Reference Information

Product Specification: PS-70567
 Packaging: Tube
 Mates With: C-Grid Vertical Receptacles, 70450A
 crimp housing
 Designed In: Inches

Electrical

Voltage: 250V
 Current: 3.0A
 Contact Resistance: 15mΩ max.
 Dielectric Withstanding Voltage: 1500V
 Insulation Resistance: 1000 MΩ min.

Mechanical

Contact Retention to Housing: 17.79N (4 lb)
 Durability: 25 cycles Tin/Lead and
 50 cycles Gold

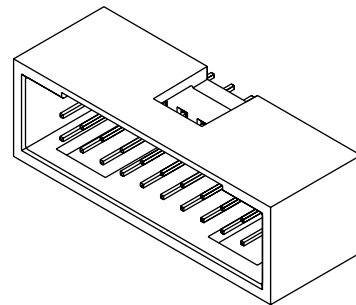
Physical

Housing: High-temperature thermoplastic, UL 94V-0
 Contact: Phosphor Bronze
 Plating: See Table
 Operating Temperature: -40 to +105°C

molex® 2.54mm (.100") Pitch C-Grid® Shrouded Header

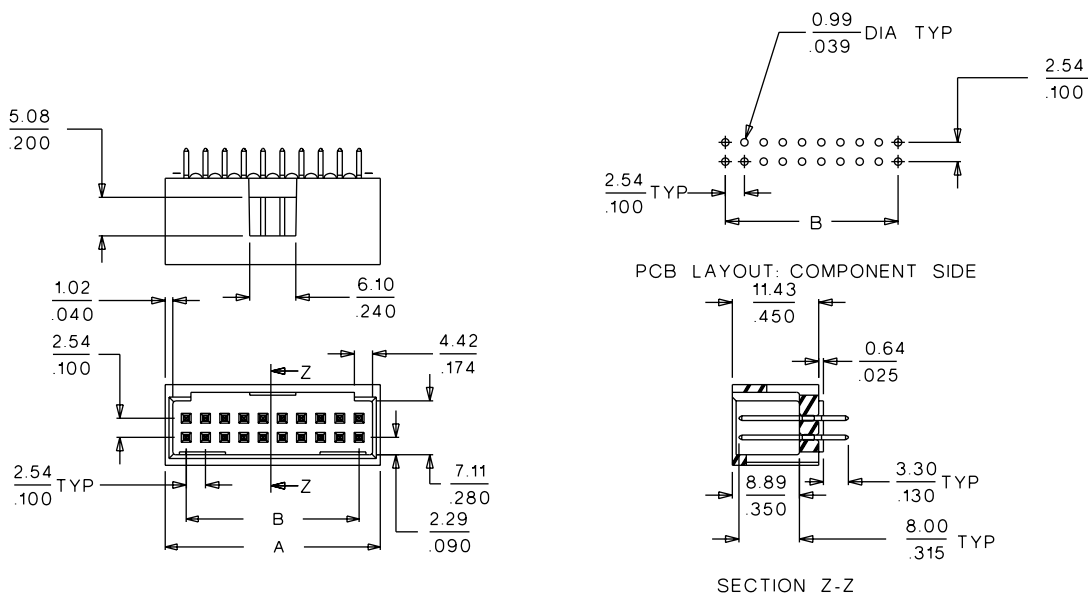
70567

Dual Row, High-Temperature Through Hole without Pegs Vertical



2.54mm (.100") Pitch

CATALOG DRAWING (FOR REFERENCE ONLY)



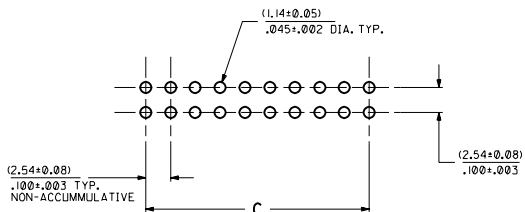
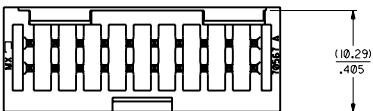
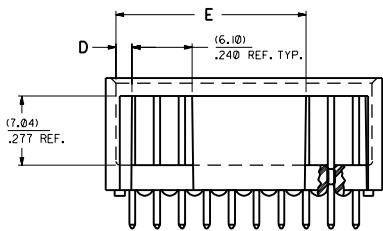
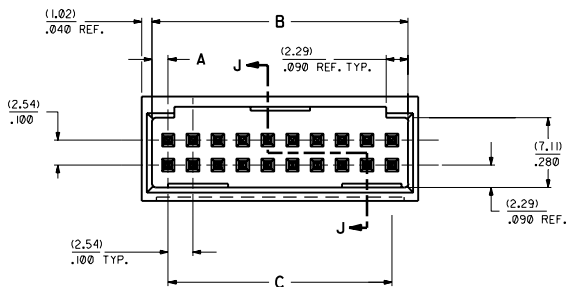
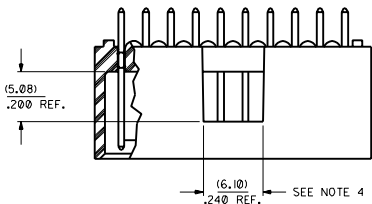
ORDERING INFORMATION AND DIMENSIONS

Circuits	Dimension		Circuits	Dimension		Circuits	Dimension		Circuits	Dimension	
	A	B		A	B		A	B		A	B
6	10.47 (.412)	5.08 (.200)	24	33.33 (1.312)	27.94 (1.100)	42	56.19 (2.212)	50.80 (2.000)	60	79.05 (3.112)	73.66 (2.900)
8	13.01 (.512)	7.62 (.300)	26	35.87 (1.412)	30.48 (1.200)	44	58.73 (2.312)	53.34 (2.100)	62	81.59 (3.212)	76.20 (3.000)
10	15.55 (.612)	10.16 (.400)	28	38.41 (1.512)	33.02 (1.300)	46	61.27 (2.412)	55.88 (2.200)	64	84.13 (3.312)	78.74 (3.100)
12	18.09 (.712)	12.70 (.500)	30	40.95 (1.612)	35.56 (1.400)	48	63.81 (2.512)	58.42 (2.300)	66	86.67 (3.412)	81.28 (3.200)
14	20.63 (.812)	15.24 (.600)	32	43.49 (1.712)	38.10 (1.500)	50	66.35 (2.612)	60.96 (2.400)	68	89.21 (3.512)	83.82 (3.300)
16	23.17 (.912)	17.78 (.700)	34	46.03 (1.812)	40.64 (1.600)	52	68.89 (2.712)	63.50 (2.500)	70	91.75 (3.612)	86.36 (3.400)
18	25.71 (1.012)	20.32 (.800)	36	48.57 (1.912)	43.18 (1.700)	54	71.43 (2.812)	66.04 (2.600)	72	94.29 (3.712)	88.90 (3.500)
20	28.25 (1.112)	22.86 (.900)	38	51.11 (2.012)	45.72 (1.800)	56	73.97 (2.912)	68.58 (2.700)			
22	30.79 (1.212)	25.40 (1.000)	40	53.65 (2.112)	48.26 (1.900)	58	76.51 (3.012)	71.12 (2.800)			

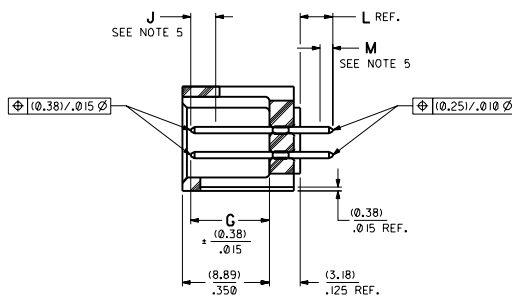
Plating Option	Order No.
	End Wall = 1.68mm (.066")
15μ" min. select Gold	15-80-0XX3
30μ" min. select Gold	15-80-0XX5
150μ" Tin/Lead	15-80-0XX1

Replace XX with no. of circuits, 06-72 (even only)

OPTION "A"



RECOMMENDED P.C. BOARD HOLE LAYOUT



SECTION J-J

NOTES:

- PIN PUSHOUT FORCE: 4 LBS. MIN.
- FOR ILLUSTRATION PURPOSES, 20 (DUAL 10) CIRCUIT SIZE HEADER SHOWN.
- PIN SOLDERABILITY PER MOLEX SPEC. ES-152.
- WINDOW NOT AVAILABLE ON 6 OR 8 CIRCUIT SIZE.
- MEASURE POINT FOR PLATING THICKNESS.
- THIS PRODUCT CONFORMS TO MOLEX PRODUCT SPEC. PS-70567.

MATERIAL:

SHROUDED WAFER: GLASS FILLED, LIQUID CRYSTAL POLYMER, COLOR: BLACK, 94V-0.

PINS: PHOSPHOR BRONZE ALLOY

PKT.	DIM. 'A'	DIM. 'B'	DIM. 'C'	DIM. 'D'	DIM. 'E'						
06	(1.68) .066	(8.43) .332	(5.08) .200	(1.68) .066							
08	(1.68) .066	(10.97) .432	(7.62) .300	(1.68) .066							
10	(1.68) .066	(13.51) .532	(10.16) .400	(4.22) .166							
12	(1.68) .066	(16.05) .632	(12.70) .500	(4.22) .166							
14	(1.68) .066	(18.59) .732	(15.24) .600	(6.76) .266							
16	(1.68) .066	(21.13) .832	(17.78) .700	(6.76) .266							
18	(1.68) .066	(23.67) .932	(20.32) .800	(9.30) .366							
20	(1.68) .066	(26.21) 1.032	(22.86) .900	(1.68) .066	(19.46) .766						
22	(1.68) .066	(28.75) 1.132	(25.40) 1.000	(1.68) .066	(22.00) .866						
24	(1.68) .066	(31.29) 1.232	(27.94) 1.100	(1.68) .066	(24.54) .966						
26	(1.68) .066	(33.83) 1.332	(30.48) 1.200	(1.68) .066	(27.08) 1.066						
28	(1.68) .066	(36.37) 1.432	(33.02) 1.300	(1.68) .066	(29.62) 1.166						
30	(1.68) .066	(38.91) 1.532	(35.56) 1.400	(1.68) .066	(32.16) 1.266						
32	(1.68) .066	(41.45) 1.632	(38.10) 1.500	(1.68) .066	(34.70) 1.366						
34	(1.68) .066	(43.99) 1.732	(40.64) 1.600	(1.68) .066	(37.24) 1.466						
36	(1.68) .066	(46.53) 1.832	(43.18) 1.700	(1.68) .066	(39.78) 1.566						
38	(1.68) .066	(49.07) 1.932	(45.72) 1.800	(1.68) .066	(42.32) 1.666						
40	(1.68) .066	(51.61) 2.032	(48.26) 1.900	(1.68) .066	(44.86) 1.766						
42	(1.68) .066	(54.15) 2.132	(50.80) 2.000	(1.68) .066	(47.40) 1.866						
44	(1.68) .066	(56.69) 2.232	(53.34) 2.100	(1.68) .066	(49.94) 1.966						
46	(1.68) .066	(59.23) 2.332	(55.88) 2.200	(1.68) .066	(52.48) 2.066						
48	(1.68) .066	(61.77) 2.432	(58.42) 2.300	(1.68) .066	(55.02) 2.166						
50	(1.68) .066	(64.31) 2.532	(60.96) 2.400	(1.68) .066	(57.56) 2.266						
52	(1.68) .066	(66.85) 2.632	(63.50) 2.500	(1.68) .066	(60.10) 2.366						
54	(1.68) .066	(69.39) 2.732	(66.04) 2.600	(1.68) .066	(62.64) 2.466						
56	(1.68) .066	(71.93) 2.832	(68.58) 2.700	(1.68) .066	(65.18) 2.566						
58	(1.68) .066	(74.47) 2.932	(71.12) 2.800	(1.68) .066	(67.72) 2.666						
60	(1.68) .066	(77.01) 3.032	(73.66) 2.900	(1.68) .066	(70.26) 2.766						
62	(1.68) .066	(79.55) 3.132	(76.20) 3.000	(1.68) .066	(72.80) 2.866						
64	(1.68) .066	(82.09) 3.232	(78.74) 3.100	(1.68) .066	(75.34) 2.966						
66	(1.68) .066	(84.63) 3.332	(81.28) 3.200	(1.68) .066	(77.88) 3.066						
68	(1.68) .066	(87.17) 3.432	(83.82) 3.300	(1.68) .066	(80.42) 3.166						
70	(1.68) .066	(89.71) 3.532	(86.36) 3.400	(1.68) .066	(82.96) 3.266						
72	(1.68) .066	(92.25) 3.632	(88.90) 3.500	(1.68) .066	(85.50) 3.366						

PLATING PER ES-88:

- (164) .000150 MIN. TIN/LEAD OVER .000050 MIN. NICKEL.
- (571) .000015 MIN. GOLD PLATE IN SELECTED AREA, .000075 MIN. TIN/LEAD IN SELECTED AREA, OVER .000050 MIN. NICKEL OVER-ALL.
- (574) .000030 MIN. GOLD PLATE IN SELECTED AREA, .000075 MIN. TIN/LEAD IN SELECTED AREA, OVER .000050 MIN. NICKEL OVER-ALL.

DIMENSIONS SHOWN UNLESS NOTED INCH		REVISE ONLY ON CAD SYSTEM	
SCALE: 1:1	DATE: 10/20/98	TITLE: WAFER ASSY - 4 SIDES SHROUDED HIGH TEMPERATURE, 100 GRID, USED WITH .025 SQ. PINS	
MFG. SH. REV. LTR. REVISIONS		PART NO. 1 OF 8	
MATERIAL: WAFER		DRAWN BY: SDA-70567-****	
CHECKED BY: EIK		DATE: 10/20/98	
APPROVED BY: EIK		SCALE: 4:1	

E1 ADD WINDOW NOTE ECN #1071999-0145 DMR/GORGAN 9/8/08/31

E CHANGE PLATING TYPE PER ECN 181028 MFM 9/7/07/21

C1 ADD PKG INFO PER ECN 180789 PER ECN 180789 BARKER 9/7/09/03

C CLARIFY OPTIONS PER ECN 180867 88-16-94 BJS

B 1 E1 #4 PLT WAS MAX PER EDN # 180561 04/20/98

B 2 E1 ADD EDN NUMBERS PER ECN 180867 88-16-94 BJS

2 E1 ** RELEASE PER ECN NO. 111859 03-10-88

1 E1 PER ECN NO. 26855 03-10-88

ENGINEERING NUMBER A-70567	MANUFACTURE RELEASE STATUS	L REF.	G .015 (0.38)	PLATE PER E.S. (88)	CONNECTOR END PLATING		P.C. BOARD END PLATING		PACKAGING INFORMATION PK-70873-
					TYPE	J MEAS.	TYPE	M MEAS.	
-001/-0034	R.F.M.	.130 (3.30)	.315 (8.00)	164	TIN/LEAD	.100 (2.54)	TIN/LEAD	.050 (1.27)	0018
-0035/-0068									0018
-0069/-0102	R.F.M.	.130 (3.30)	.315 (8.00)	571	GOLD	.100 (2.54)	TIN/LEAD	.050 (1.27)	0018
-0103/-0136									0018
-0137/-0170	R.F.M.	.130 (3.30)	.315 (8.00)	574	GOLD	.100 (2.54)	TIN/LEAD	.050 (1.27)	0018
-0171/-0204									

NO. OF CRTS	OPTION "A"		OPTION "A"		OPTION "A"														NO. OF CRTS
	EDP NUMBER	ENG NUMBER	EDP NUMBER	ENG NUMBER	EDP NUMBER	ENG NUMBER	EDP NUMBER	ENG NUMBER	EDP NUMBER	ENG NUMBER	EDP NUMBER	ENG NUMBER	EDP NUMBER	ENG NUMBER	EDP NUMBER	ENG NUMBER	EDP NUMBER	ENG NUMBER	
06	15-80-0061	A-70567-0001	AX-70567-0035	15-80-0063	A-70567-0069	AX-70567-0103	15-80-0065	A-70567-0137	AX-70567-0171									06	
08	15-80-0081	A-70567-0002	AX-70567-0036	15-80-0083	A-70567-0070	AX-70567-0104	15-80-0085	A-70567-0138	AX-70567-0172									08	
10	15-80-0101	A-70567-0003	AX-70567-0037	15-80-0103	A-70567-0071	AX-70567-0105	15-80-0105	A-70567-0139	AX-70567-0173									10	
12	15-80-0121	A-70567-0004	AX-70567-0038	15-80-0123	A-70567-0072	AX-70567-0106	15-80-0125	A-70567-0140	AX-70567-0174									12	
14	15-80-0141	A-70567-0005	AX-70567-0039	15-80-0143	A-70567-0073	AX-70567-0107	15-80-0145	A-70567-0141	AX-70567-0175									14	
16	15-80-0161	A-70567-0006	AX-70567-0040	15-80-0163	A-70567-0074	AX-70567-0108	15-80-0165	A-70567-0142	AX-70567-0176									16	
18	15-80-0181	A-70567-0007	AX-70567-0041	15-80-0183	A-70567-0075	AX-70567-0109	15-80-0185	A-70567-0143	AX-70567-0177									18	
20	15-80-0201	A-70567-0008	AX-70567-0042	15-80-0203	A-70567-0076	AX-70567-0110	15-80-0205	A-70567-0144	AX-70567-0178									20	
22	15-80-0221	A-70567-0009	AX-70567-0043	15-80-0223	A-70567-0077	AX-70567-0111	15-80-0225	A-70567-0145	AX-70567-0179									22	
24	15-80-0241	A-70567-0010	AX-70567-0044	15-80-0243	A-70567-0078	AX-70567-0112	15-80-0245	A-70567-0146	AX-70567-0180									24	
26	15-80-0261	A-70567-0011	AX-70567-0045	15-80-0263	A-70567-0079	AX-70567-0113	15-80-0265	A-70567-0147	AX-70567-0181									26	
28	15-80-0281	A-70567-0012	AX-70567-0046	15-80-0283	A-70567-0080	AX-70567-0114	15-80-0285	A-70567-0148	AX-70567-0182									28	
30	15-80-0301	A-70567-0013	AX-70567-0047	15-80-0303	A-70567-0081	AX-70567-0115	15-80-0305	A-70567-0149	AX-70567-0183									30	
32	15-80-0321	A-70567-0014	AX-70567-0048	15-80-0323	A-70567-0082	AX-70567-0116	15-80-0325	A-70567-0150	AX-70567-0184									32	
34	15-80-0341	A-70567-0015	AX-70567-0049	15-80-0343	A-70567-0083	AX-70567-0117	15-80-0345	A-70567-0151	AX-70567-0185									34	
36	15-80-0361	A-70567-0016	AX-70567-0050	15-80-0363	A-70567-0084	AX-70567-0118	15-80-0365	A-70567-0152	AX-70567-0186									36	
38	15-80-0381	A-70567-0017	AX-70567-0051	15-80-0383	A-70567-0085	AX-70567-0119	15-80-0385	A-70567-0153	AX-70567-0187									38	
40	15-80-0401	A-70567-0018	AX-70567-0052	15-80-0403	A-70567-0086	AX-70567-0120	15-80-0405	A-70567-0154	AX-70567-0188									40	
42	15-80-0421	A-70567-0019	AX-70567-0053	15-80-0423	A-70567-0087	AX-70567-0121	15-80-0425	A-70567-0155	AX-70567-0189									42	
44	15-80-0441	A-70567-0020	AX-70567-0054	15-80-0443	A-70567-0088	AX-70567-0122	15-80-0445	A-70567-0156	AX-70567-0190									44	
46	15-80-0461	A-70567-0021	AX-70567-0055	15-80-0463	A-70567-0089	AX-70567-0123	15-80-0465	A-70567-0157	AX-70567-0191									46	
48	15-80-0481	A-70567-0022	AX-70567-0056	15-80-0483	A-70567-0090	AX-70567-0124	15-80-0485	A-70567-0158	AX-70567-0192									48	
50	15-80-0501	A-70567-0023	AX-70567-0057	15-80-0503	A-70567-0091	AX-70567-0125	15-80-0505	A-70567-0159	AX-70567-0193									50	
52	15-80-0521	A-70567-0024	AX-70567-0058	15-80-0523	A-70567-0092	AX-70567-0126	15-80-0525	A-70567-0160	AX-70567-0194									52	
54	15-80-0541	A-70567-0025	AX-70567-0059	15-80-0543	A-70567-0093	AX-70567-0127	15-80-0545	A-70567-0161	AX-70567-0195									54	
56	15-80-0561	A-70567-0026	AX-70567-0060	15-80-0563	A-70567-0094	AX-70567-0128	15-80-0565	A-70567-0162	AX-70567-0196									56	
58	15-80-0581	A-70567-0027	AX-70567-0061	15-80-0583	A-70567-0095	AX-70567-0129	15-80-0585	A-70567-0163	AX-70567-0197									58	
60	15-80-0601	A-70567-0028	AX-70567-0062	15-80-0603	A-70567-0096	AX-70567-0130	15-80-0605	A-70567-0164	AX-70567-0198									60	
62	15-80-0621	A-70567-0029	AX-70567-0063	15-80-0623	A-70567-0097	AX-70567-0131	15-80-0625	A-70567-0165	AX-70567-0199									62	
64	15-80-0641	A-70567-0030	AX-70567-0064	15-80-0643	A-70567-0098	AX-70567-0132	15-80-0645	A-70567-0166	AX-70567-0200									64	
66	15-80-0661	A-70567-0031	AX-70567-0065	15-80-0663	A-70567-0099	AX-70567-0133	15-80-0665	A-70567-0167	AX-70567-0201									66	
68	15-80-0681	A-70567-0032	AX-70567-0066	15-80-0683	A-70567-0100	AX-70567-0134	15-80-0685	A-70567-0168	AX-70567-0202									68	
70	15-80-0701	A-70567-0033	AX-70567-0067	15-80-0703	A-70567-0101	AX-70567-0135	15-80-0705	A-70567-0169	AX-70567-0203									70	
72	15-80-0721	A-70567-0034	AX-70567-0068	15-80-0723	A-70567-0102	AX-70567-0136	15-80-0725	A-70567-0170	AX-70567-0204									72	

D	SEE SHEET 1	DIMENSIONS SHOWN UNLESS NOTED INCH UNLESS OTHERWISE SPECIFIED TO FINISHED DIMENSION UNLESS NOTED OTHERWISE	<input checked="" type="checkbox"/> INCH <input type="checkbox"/> METRIC	REVISIONS ONLY ON CAD SYSTEM WAFER ASSY - 4 SIDES SHROUDED HIGH TEMPERATURE, 100 GRID, USED WITH .025 SQ. PINS	SHEET NO. 5 OF 10	DATE 03/10/88
C	SEE SHEET 1					
B	SEE SHEET 1					
A	SEE SHEET 1					
2	SEE SHEET 1					
1	SEE SHEET 1					
DRWG. NAME, APPLICABLE MOST PREVIOUS EDITION OBSOLETE		DRWG. NO. 510567X3 SCALE 1:1		MOLEX INCORPORATED 6803 JOLLA, CALIF.		SHEET NO. 5 OF 10
LTR. REVISIONS		LTR. REVISIONS		SEE CHART SDA-70567-****		DATE 03/10/88