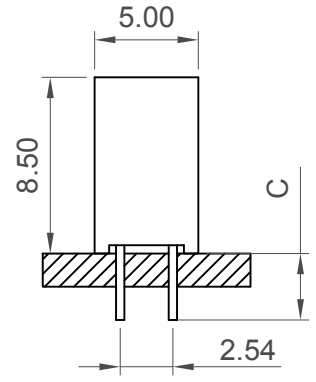
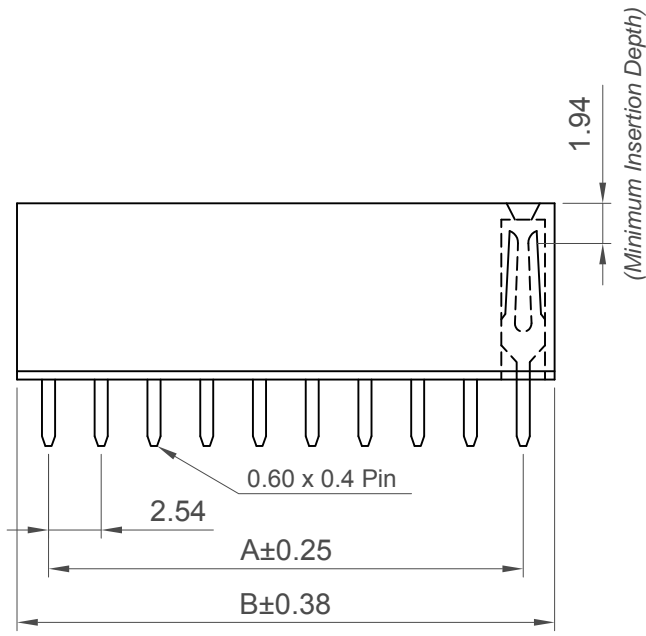
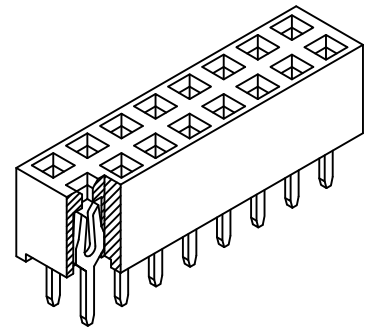


Recommended PCB Layout



Specifications 规格

**Material 物料**  
 Contact端子: Copper Alloy  
 Insulator Material 绝缘体:  
 Standard 标准: Polyamide, Nylon 6T, UL 94V-0  
 Options 可选: Polymer, LCP, UL 94V-0  
 Polyester, PBT, UL 94V-0

**Plating 电镀**  
 Contact 接触: See Ordering Grid

**Electrical 电气**  
 Current Rating 电流额定值: 3 Amp per pin  
 Insulator Resistance 绝缘电阻值: 1000 MΩ min.  
 Contact Resistance 接触电阻值: 20 mΩ max.  
 Dielectric Withstanding 耐电压: AC 600 V

**Environmental & Mechanical 机械 & 环境**  
 Operating Temperature 工作温度: -40° to +105°C  
 Soldering Process 可焊性:

**Nylon 6T (Standard 标准物料) -**  
 IR Reflow 回流焊: 260°C for 10 sec.  
 Wave 波峰焊: 230°C for 5-10 sec.  
 Manual Solder 人工焊接: 350°C for 3-5 sec

**LCP (Option 可选物料) -**  
 IR Reflow 回流焊: 260°C for 10 sec.  
 Wave 波峰焊: 250°C for 5-10 sec.  
 Manual Solder 人工焊接: 350°C for 3-5 sec

**PBT (Option 可选物料)**  
 Manual solder 人工焊接: 330°C for 3-5 sec.  
 (Not suitable for hi-temp process 不适合高温制程)

**Mates with 配套之公头**  
 (subject to pin length 在端子长度适合的条件下)  
 BG025 BG040 BG041 BG045  
 BG050 BG065 BG066 BG070  
 BG085

Number of Contacts	Dimensions	
	A	B
4	2.54	5.58
6	5.08	8.12
8	7.62	10.66
10	10.16	13.20
12	12.70	15.74
14	15.24	18.28
16	17.78	20.82
18	20.32	23.36
20	22.86	25.90
22	25.40	28.44
24	27.94	30.98
26	30.48	33.52
28	33.02	36.06
30	35.56	38.60
32	38.10	41.14
34	40.64	43.68
36	43.18	46.22
38	45.72	48.76
40	48.26	51.30
42	50.80	53.84
44	53.34	56.38
46	55.88	58.92
48	58.42	61.46
50	60.96	64.00
52	63.50	66.54
54	66.04	69.08
56	68.58	71.62
58	71.12	74.16
60	73.66	76.70
62	76.20	79.24
64	78.74	81.78
66	81.28	84.32
68	83.82	86.86
70	86.36	89.40
72	88.90	91.94
74	91.44	94.48
76	93.98	97.02
78	96.52	99.56
80	99.06	102.10



**Ordering Grid**  
 BG150-XX-X-XXXX-X-X  
 No. of Contacts: 04 to 80  
 Contact Plating:  
 A = Gold Flash All Over (Standard)  
 B = Selective Gold Flash Contact Area/Tin On Tail  
 C = Tin All Over  
 G = 10μ" Gold Contact Area/Tin On Tail  
 I = 30μ" Gold Contact Area/Tin On Tail

**Packing Options**  
 D = Tube (Standard)  
 E = Tube with Cap  
 F = Tube with Film  
 G = Plastic Box

**Insulator Material**  
 N = Nylon 6T (Standard)  
 P = PBT  
 L = LCP

**Dimension C (1/100mm) (Tail Length)**  
 0320 = 3.20mm (Standard)  
 0300 = 3.00mm

Part Number		Product Description	
BG150		2.54mm Pitch Socket	
Drawing Date		Dual Row, Through Hole, Vertical	
30th October 2006			
By	CC	Tolerances (Except as Noted)	Units:
Detail	BG150 1 PCN	Length X ± 0.30 Angle X° ± 5° XX ± 0.20 XXX ± 0.15 X.XXX ± 0.10	Metric (mm)
Revision	I1	X.X° ± 2° X.XX° ± 1° X.XXX° ± 0.5°	3rd Angle Projection
Date	27/06/17		



This drawing is confidential and copyright of Global Connector Technology Ltd (GCT). This drawing must not be copied or disclosed without written consent. E & OE



Not to Scale	Drawn By AJO	Sheet No. 1/1
--------------	--------------	---------------