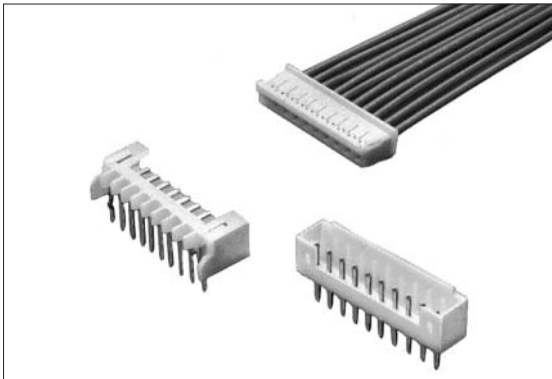


UP Series 2.0mm Pitch



■ Features

1. Only 6.8mm height and 4.5mm width when mated.
2. Two types of plugs are available (straight or right-angle) and ranging from 2P to 15P.
3. The terminal features a tapered dimple design which is highly resistant against fretting.
4. A locking structure is utilized for the socket and plug housing to ensure the connection and prevent improper plug insertion.

■ Specification

1. Rating : 1A, 125V AC/DC
2. Contact Resistance : 20mΩ max., initially
3. Insulation Resistance : 1000MΩ min. at 500V DC
4. Withstanding Voltage : 500V AC (for one minute)
5. Operating Temperature Range : -25°C to +85°C

■ 特 長

1. ソケットとプラグの結合高さ6.8mm、厚さ4.5mmの小型タイプです。
2. 極数は2～15、プラグはストレートタイプとライトアングルタイプがあります。
3. ターミナルはディンプル構造で微摺動に対して高い信頼性が得られます。
4. プラグとソケットはロック機構付きで、確実なロックと誤挿入を防止します。

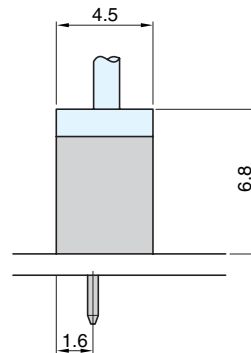
■ 仕 様

1. 定格電圧電流 : AC/DC 125V 1A
2. 接 触 抵 抗 : 初期20mΩ以下
3. 絶 縁 抵 抗 : DC 500V 1000MΩ 以上
4. 耐 電 圧 : AC 500V (1分間)
5. 使用温度範囲 : -25°C～+85°C

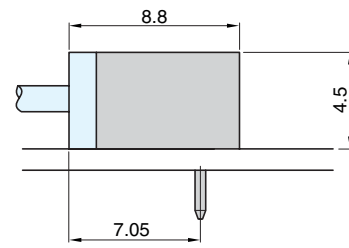
■ Mating Diagram

嵌合図

Straight Type

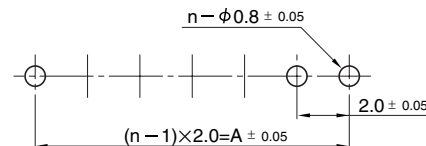


Right-Angle Type



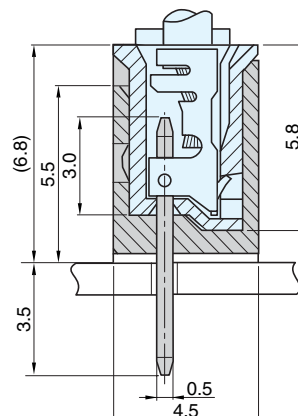
■ P.C. Board Dimension (t=1.0~1.6)

取付基板参考図



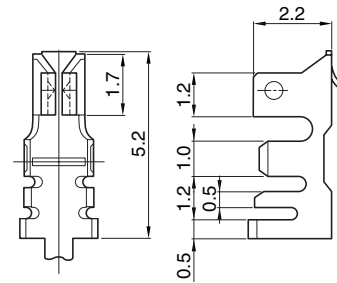
■ Structural Configuration Diagram

構造図



- Socket
- Terminal

Part No. 図番	Applicable Electrical Wire Size 適合電線範囲 (AWG)	Electrical Wire Sheath Dia. 電線被覆外径 (mm)	Material 材質	Plating 表面処理	No. of Terminal/ Reel 個数/ リール
W-T0843-11#01F	22~28	φ 1.5~0.8	Cu Alloy 銅合金	Sn (Reflow Treatment) すずめっき (リフロー処理)	15,000
W-T0844-11#01F	26~32	φ 1.3~0.5			

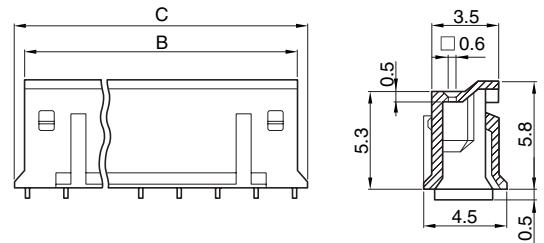
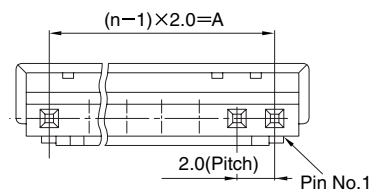


- Housing

□□ No. of Pins	Part No.	A	B	C
2	W-A2402-1N#01	2.0	4.5	5.6
3	W-A2403-1N#01	4.0	6.5	7.6
4	W-A2404-1N#01	6.0	8.5	9.6
5	W-A2405-1N#01	8.0	10.5	11.6
6	W-A2406-1N#01	10.0	12.5	13.6
7	W-A2407-1N#01	12.0	14.5	15.6
8	W-A2408-1N#01	14.0	16.5	17.6
9	W-A2409-1N#01	16.0	18.5	19.6
10	W-A2410-1N#01	18.0	20.5	21.6
11	W-A2411-1N#01	20.0	22.5	23.6
12	W-A2412-1N#01	22.0	24.5	25.6
13	W-A2413-1N#01	24.0	26.5	27.6
14	W-A2414-1N#01	26.0	28.5	29.6
15	W-A2415-1N#01	28.0	30.5	31.6

W-A 24□□-1N#01

↑ No. of Pins



■ Material and Plating

● Housing : Thermoplastic Resin, Natural Color, 94V-0

■ 材質・表面処理

●ハウジング：熱可塑性樹脂 原色 94V-0

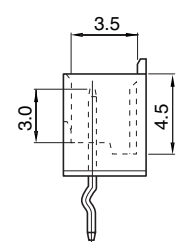
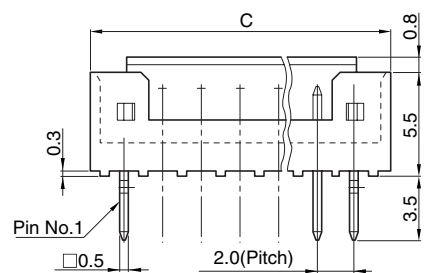
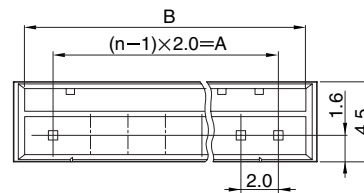
- Plug

□□ No. of Pins	Straight Type	Right-Angle Type	A	B	C
2	W-P7502#11F	W-P7902#11F	2.0	4.6	5.6
3	W-P7503#11F	W-P7903#11F	4.0	6.6	7.6
4	W-P7504#11F	W-P7904#11F	6.0	8.6	9.6
5	W-P7505#11F	W-P7905#11F	8.0	10.6	11.6
6	W-P7506#11F	W-P7906#11F	10.0	12.6	13.6
7	W-P7507#11F	W-P7907#11F	12.0	14.6	15.6
8	W-P7508#11F	W-P7908#11F	14.0	16.6	17.6
9	W-P7509#11F	W-P7909#11F	16.0	18.6	19.6
10	W-P7510#11F	W-P7910#11F	18.0	20.6	21.6
11	W-P7511#11F	W-P7911#11F	20.0	22.6	23.6
12	W-P7512#11F	W-P7912#11F	22.0	24.6	25.6
13	W-P7513#11F	W-P7913#11F	24.0	26.6	27.6
14	W-P7514#11F	W-P7914#11F	26.0	28.6	29.6
15	W-P7515#11F	W-P7915#11F	28.0	30.6	31.6

Straight Type

W-P 75□□#11F

↑ No. of Pins



■ Material and Plating

● Housing : Thermoplastic Resin, Natural Color, 94V-0

● Plug Pin : Cu Alloy, Sn Plating (Reflow Treatment)

■ 材質・表面処理

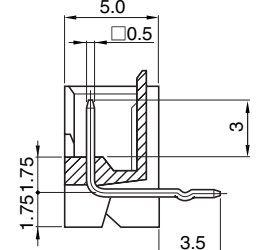
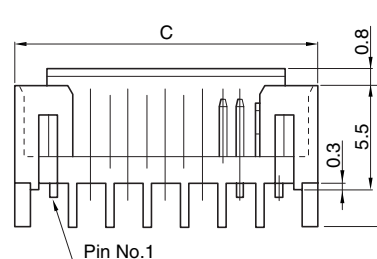
●ハウジング：熱可塑性樹脂 原色 94V-0

●プラグピン：銅合金 すずめっき（リフロー処理）

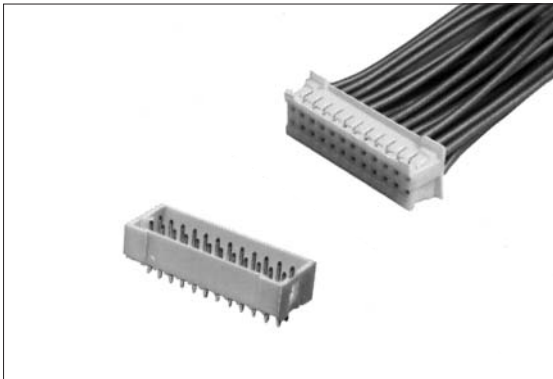
Right-Angle Type

W-P 79□□#11F

↑ No. of Pins



UP Series, Grid Type 2.0mm Pitch



■ Features

1. Available in 16 to 24 straight pin configuration.
2. This connector has a box type plug with walls on four sides and is completely resistant to high insertion due to a push-plate.
3. A locking structure and keyway, provided in the housing for receptacle and plug, prevent improper insertion.

■ Specification

1. Rating : 1A, 125V AC/DC
2. Contact Resistance : 20mΩ max., initially
3. Insulation Resistance : 1000MΩ min. at 500V DC
4. Withstanding Voltage : 500V AC (for one minute)
5. Operating Temperature Range : -25°C to +85°C

■ 特 長

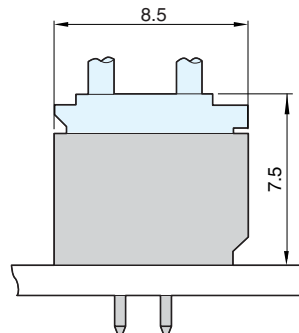
1. 極数は16P～24Pの5種類、プラグはストレートタイプです。
2. プラグは4面に壁を持つボックスタイプですので、挿抜によるこじりに対して万全です。
3. ソケットとプラグのハウジングは、ロック機構とキー機構を備えており、誤挿入を防止します。

■ 仕 様

1. 定格電圧電流 : AC/DC 125V 1A
2. 接 触 抵 抗 : 初期20mΩ以下
3. 絶 縁 抵 抗 : DC 500V 1000MΩ 以上
4. 耐 電 圧 : AC 500V (1分間)
5. 使用温度範囲 : -25°C～+85°C

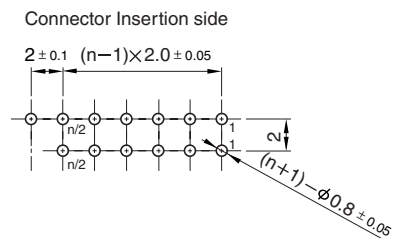
■ Mating Diagram

嵌合図



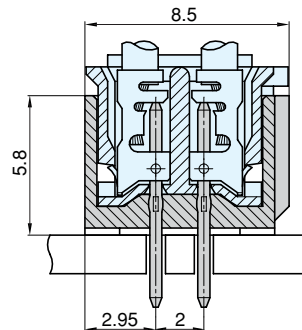
■ P.C. Board Dimension (t = 1.6)

取付基板参考図



■ Structural Configuration Diagram

構造図

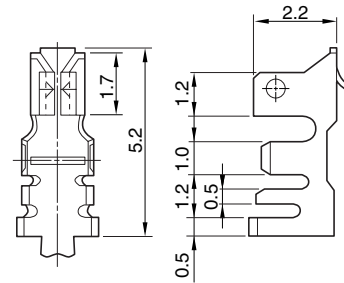


UP Series (Grid Type)

2.0mm Pitch

- Socket
- Terminal

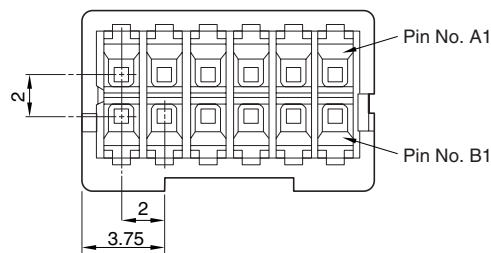
Part No. 図番	Applicable Electrical Wire Size 適合電線範囲 (AWG)	Electrical Wire Sheath Dia. 電線被覆外径 (mm)	Material 材質	Plating 表面処理	No. of Terminal/ Reel 個数/ リール
W-T0843-11#01F	22~28	φ 1.5~1.0	Cu Alloy 銅合金	Sn (Reflow Treatment) すずめっき (リフロー処理)	15,000
W-T0844-11#01F	26~30	φ 1.2~0.7			



● Housing CMP41□□-0101

↑ No. of Pins

□□ No. of Pins	Part No.	A	B	C
16	CMP4116-0101	14.0	17.1	17.5
18	CMP4118-0101	16.0	19.1	19.5
20	CMP4120-0101	18.0	21.1	21.5
22	CMP4122-0101	20.0	23.1	23.5
24	CMP4124-0101	22.0	25.1	25.5

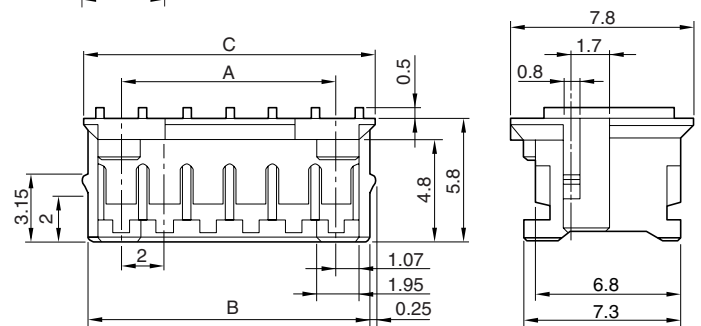


■ Material and Plating

- Housing : Thermoplastic Resin, Natural Color, 94V-0

■ 材質・表面処理

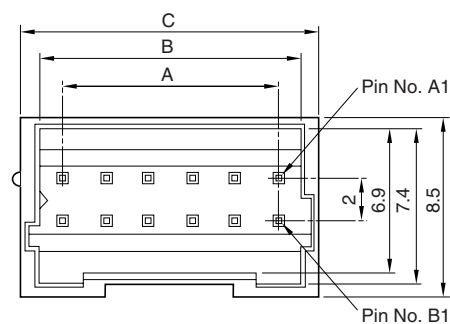
- ハウジング：熱可塑性樹脂 原色 94V-0



● Plug CMP45□□-0101F

↑ No. of Pins

□□ No. of Pins	Part No.	A	B	C
16	CMP4516-0101F	14.0	16.25	17.9
18	CMP4518-0101F	16.0	18.25	19.9
20	CMP4520-0101F	18.0	20.25	21.9
22	CMP4522-0101F	20.0	22.25	23.9
24	CMP4524-0101F	22.0	24.25	25.9

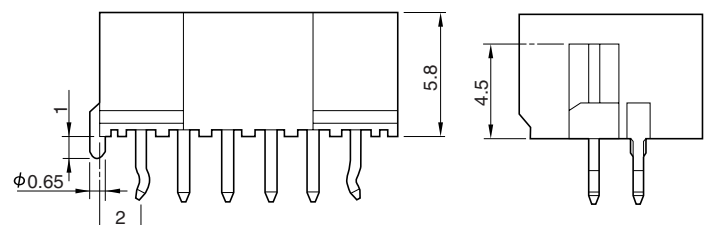


■ Material and Plating

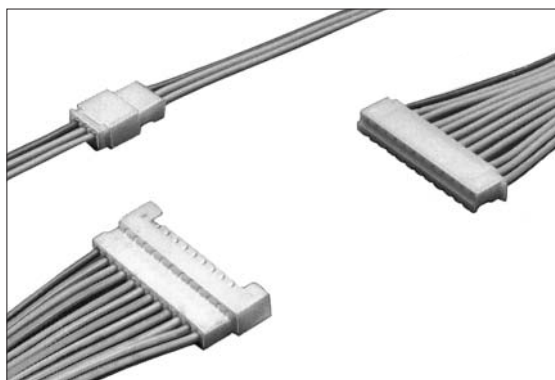
- Housing : Thermoplastic Resin, Natural Color, 94V-0
- Plug Pin : Cu Alloy, Sn Plating (Reflow Treatment)

■ 材質・表面処理

- ハウジング：熱可塑性樹脂 原色 94V-0
- プラグピン：銅合金 すずめっき(リフロー処理)



UP Series, In-Line Type 2.0mm Pitch



Features

1. An overall length is only 11.8mm. when mated.
2. Available range from 2P to 15P; the sockets apply to the UP connector (W-A24□□Series).
3. A locking structure is utilized for the socket and plug housing to ensure connection and to prevent improper plug insertion.

Specification

1. Rating : 1A, 125V AC/DC
2. Contact Resistance : 20mΩ max., initially
3. Insulation Resistance : 1000MΩ min. at 500V DC
4. Withstanding Voltage : 500V AC (for one minute)
5. Operating Temperature Range : -25°C to +85°C

Material and Plating

- Housing : Thermoplastic Resin, Natural Color, 94V-0
- Terminal : Cu Alloy, Sn Plating (Reflow Treatment)

特長

1. プラグとソケットの結合全長は11.8mmです。
2. 極数は2~15P、ソケットはUPコネクタ (W-A24□□シリーズ) に適合します。
3. プラグとソケットはロック機構付きで、確実なロックと誤挿入を防止します。

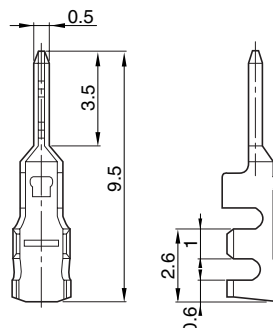
仕様

1. 定格電圧電流 : AC/DC 125V 1A
2. 接触抵抗 : 初期20mΩ以下
3. 絶縁抵抗 : DC 500V 1000MΩ以上
4. 耐電圧 : AC 500V (1分間)
5. 使用温度範囲 : -25°C ~ +85°C

材質・表面処理

- ハウジング：熱可塑性樹脂 原色 94V-0
- ターミナル：銅合金 すずめっき(リフロー処理)

- Plug
- Terminal

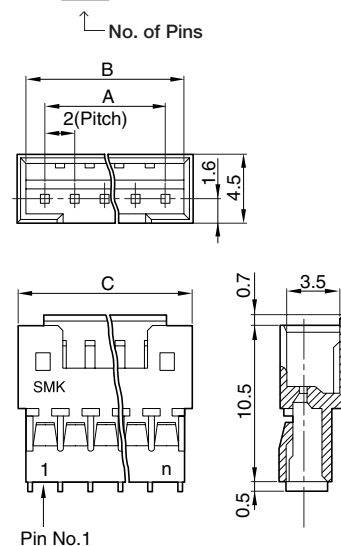


Part No. 図番	Applicable Electrical Wire Size 適合電線範囲 (AWG)	Electrical Wire Sheath Dia. 電線被覆外径 (mm)	Material 材質	Plating 表面処理	No. of Terminal/ Reel 個数/ リール
CTA5122-0401F	22~30	φ 1.5~0.7	Cu Alloy 銅合金	Sn (Reflow Treatment) すずめっき (リフロー処理)	15,000

● Housing

CMP 13□□-0180

□□ No. of Pins	Part No.	A	B	C
2	CMP1302-0180	2.0	4.6	5.6
3	CMP1303-0180	4.0	6.6	7.6
4	CMP1304-0180	6.0	8.6	9.6
5	CMP1305-0180	8.0	10.6	11.6
6	CMP1306-0180	10.0	12.6	13.6
7	CMP1307-0180	12.0	14.6	15.6
8	CMP1308-0180	14.0	16.6	17.6
9	CMP1309-0180	16.0	18.6	19.6
10	CMP1310-0180	18.0	20.6	21.6
11	CMP1311-0180	20.0	22.6	23.6
12	CMP1312-0180	22.0	24.6	25.6
13	CMP1313-0180	24.0	26.6	27.6
14	CMP1314-0180	26.0	28.6	29.6
15	CMP1315-0180	28.0	30.6	31.6



■ Mating Diagram 嵌合図

