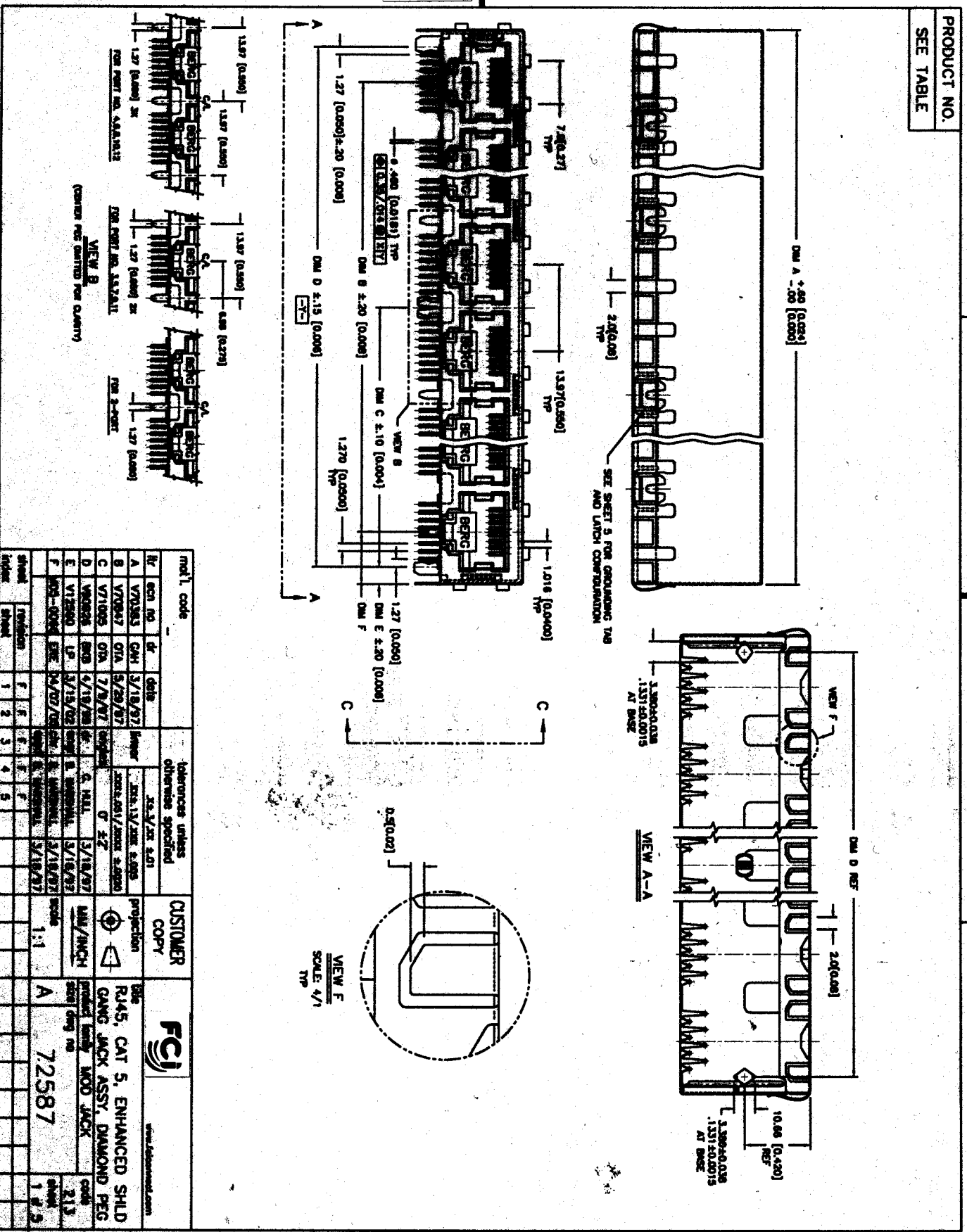




PRODUCT NO.  
SEE TABLE



VIEW B  
(CONTROL PEG CONTROL FOR QUALITY)

SEE SHEET 3 FOR DIMENSIONS AND LATCH COMPARISON

VIEW F  
SCALE 4/1

REV	ECO NO	DATE	DESCRIPTION	TOLERANCES UNLESS OTHERWISE SPECIFIED	CUSTOMER COPY	FCI	DATE	BY	CHKD	APP'D
A	W70385	3/18/97	ISSUE	25.4/31.75/30.48/30.48						
B	W70647	5/20/97	REVISION	25.4/31.75/30.48/30.48						
C	W71005	7/9/97	REVISION	25.4/31.75/30.48/30.48						
D	W70905	4/18/98	REVISION	25.4/31.75/30.48/30.48						
E	W12540	3/18/02	REVISION	25.4/31.75/30.48/30.48						
F	W05-0004	04/07/08	REVISION	25.4/31.75/30.48/30.48						

ACAD

PDM: Rev:F

STATUS:Released

Printed: Mar 10, 2007

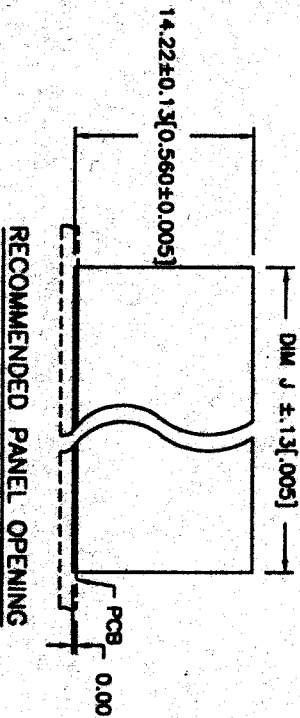




PRODUCT NO.	NO. OF PORTS	DIM A ±0.60/-0	DIM B	DIM C ±0.10	DIM D ±0.15	DIM E ±0.20	DIM F	DIM J	REMARKS
72587-101Y	1	15.74 [0.620]	-----	-----	11.43 [0.450]	2.16 [0.085]	7.87 [0.310]	16.87 [0.664]	TOOLED
72587-102Y	2	30.98 [1.220]	13.97 [0.550]	12.70 [0.500]	23.40 [1.000]	2.70 [0.110]	8.51 [0.335]	32.11 [1.264]	NOT TOOLED
72587-103Y	3	44.95 [1.770]	27.94 [1.010]	19.69 [0.775]	39.57 [1.550]	2.70 [0.110]	8.51 [0.335]	46.08 [1.814]	NOT TOOLED
72587-104Y	4	58.92 [2.300]	41.91 [1.650]	26.67 [1.050]	53.34 [2.100]	2.70 [0.110]	8.51 [0.335]	60.05 [2.364]	TOOLED
72587-105Y	5	72.89 [2.870]	55.88 [2.200]	33.66 [1.325]	67.31 [2.650]	2.70 [0.110]	8.51 [0.335]	74.09 [2.917]	NOT TOOLED
72587-106Y	6	86.86 [3.420]	69.85 [2.750]	40.64 [1.600]	81.28 [3.200]	2.70 [0.110]	8.51 [0.335]	87.99 [3.464]	TOOLED
72587-107Y	7	100.83 [3.970]	83.82 [3.300]	47.63 [1.875]	95.25 [3.750]	2.70 [0.110]	8.51 [0.335]	101.96 [4.014]	NOT TOOLED
72587-108Y	8	114.80 [4.520]	97.79 [3.850]	54.61 [2.150]	109.22 [4.300]	2.70 [0.110]	8.51 [0.335]	115.93 [4.564]	TOOLED
72587-109Y	9	128.77 [5.070]	111.76 [4.400]	61.60 [2.425]	123.19 [4.850]	2.70 [0.110]	8.51 [0.335]	129.89 [5.114]	NOT TOOLED
72587-110Y	10	142.74 [5.620]	125.73 [4.950]	68.59 [2.700]	137.16 [5.400]	2.70 [0.110]	8.51 [0.335]	143.86 [5.664]	NOT TOOLED
72587-111Y	11	156.71 [6.170]	139.70 [5.500]	75.57 [2.975]	151.13 [5.950]	2.70 [0.110]	8.51 [0.335]	157.84 [6.214]	NOT TOOLED
72587-112Y	12	170.68 [6.720]	153.67 [6.050]	82.55 [3.250]	165.10 [6.500]	2.70 [0.110]	8.51 [0.335]	171.81 [6.764]	NOT TOOLED

DASH NO. CODE Y	DESCRIPTION
0	WITH SIDE TABS
1	WITHOUT SIDE TABS

PLATING CODE X	PLATING (3)
1	25µm/250µ" BRASS
2	25µm/150µ" GOLD
3	75µm/250µ" GOLD
5	1.27µm/50µ" GOLD



NOTES:

1. RECOMMENDED P.C.B. THICKNESS 1.60 [0.063]
2. HOUSING MATERIAL: HIGH TEMPERATURE NYLON, 94-V-0.
3. CONTACTS: PHOS BRONZE ALLOY UNS-C51000, ø 0.460 [0.0181] ROUND WIRE. PLATING SEE TABLE.
4. REAR SHIELD MATL: .25 [0.010] THICK BRASS ALLOY, 2.54µm/100µ" BRIGHT TIN-LEAD PLATED, OVER 1.02µm/40µ" MIN NICKEL UNDERPLATING PER BUS-15-002/M LEAD FREE OPTION.
5. FRONT SHIELD MATL: .178 [0.0070] THICK BRASS ALLOY, 2.54µm/100µ" BRIGHT TIN PLATED, OVER 1.02µm/40µ" MIN NICKEL UNDERPLATING PER BUS-15-002/M LEAD FREE OPTION.
6. ALL DIMENSIONS IN MILLIMETERS/INCHES.
7. CENTER PEG FOR 8-PORTS AND ABOVE.
8. ADD LF SUFFIX AT THE END OF PART NUMBER FOR LEAD FREE OPTION.
9. THE HOUSING WILL WITHSTAND EXPOSURE TO 280°C PEAK TEMPERATURE MINIMUM THICK CIRCUIT BOARD. SEE APPLICATION NOTES/PROCEDURES IF THEY ARE AVAILABLE.
10. THIS PRODUCT MEETS EUROPEAN UNION DIRECTIVES AND OTHER COUNTRY REGULATION AS DESCRIBED IN GS-22-006.
11. PLATING OPTIONS MAY BE EITHER GOLD OR GILT PLATED AT MANUFACTURER'S OPTION.

part code	customer copy	customer copy	customer copy	customer copy	customer copy	customer copy	customer copy	customer copy	customer copy
72587									

ACAD

PDM: Rev:F

STATUS: Released

22526

Printed: Mar 10, 2007



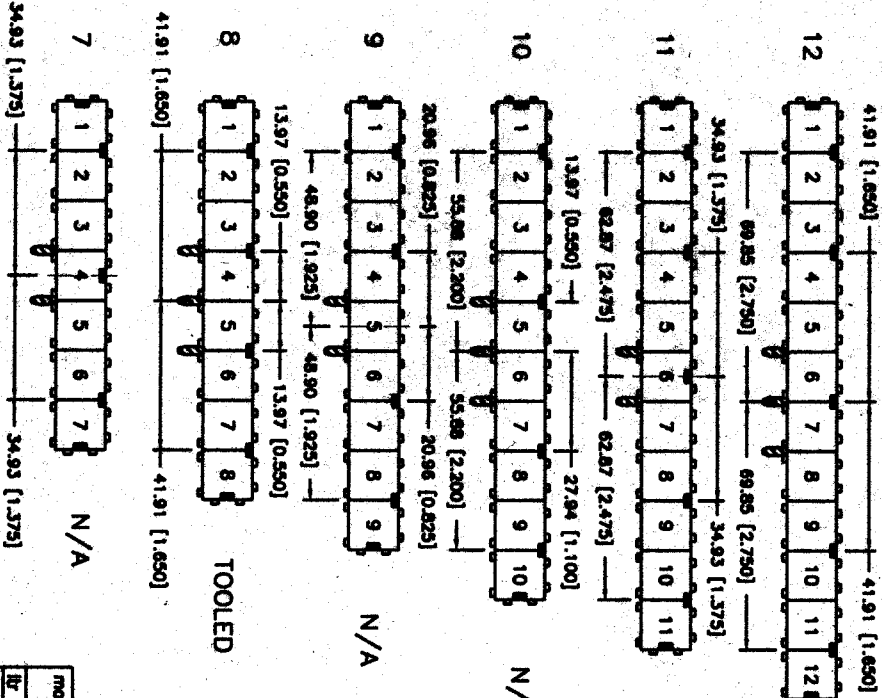


PRODUCT NO.  
SEE TABLE

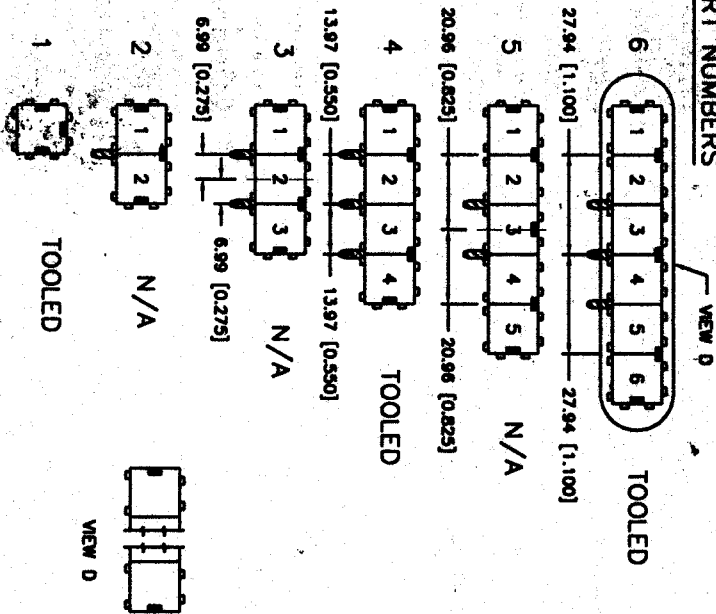
### LATCHING AND GROUNDING TAB LOCATING CONFIGURATION

#### PORT NUMBERS

- INDICATES LATCHING TAB (SEE SHEET 1)
- INDICATES GROUNDING TAB ON THE FRONT OF PRODUCT (SEE SHEET 1)
- ▣ INDICATES GROUNDING LEG ON THE BACK OF PRODUCT (VIEW B)
- NOTE: SEE VIEW D FOR TYPICAL END CONFIGURATION OF ALL -XYT1 PRODUCT



#### PORT NUMBERS



mod l code	tbl eqn no	dr	date	revision	sheet	total sheets
	F					

author	date	revision	description
205.11/202 2.00	25.3/28 2.01		
205.09/1/2002 2.0000			
dr	0.57		
dr	0.58		
dr	0.59		
dr	0.60		
dr	0.61		
dr	0.62		
dr	0.63		
dr	0.64		
dr	0.65		
dr	0.66		
dr	0.67		
dr	0.68		
dr	0.69		
dr	0.70		
dr	0.71		
dr	0.72		
dr	0.73		
dr	0.74		
dr	0.75		
dr	0.76		
dr	0.77		
dr	0.78		
dr	0.79		
dr	0.80		
dr	0.81		
dr	0.82		
dr	0.83		
dr	0.84		
dr	0.85		
dr	0.86		
dr	0.87		
dr	0.88		
dr	0.89		
dr	0.90		
dr	0.91		
dr	0.92		
dr	0.93		
dr	0.94		
dr	0.95		
dr	0.96		
dr	0.97		
dr	0.98		
dr	0.99		
dr	1.00		

customer copy	projection	scale	sheet no	total sheets
		1:1	72587	54

customer copy	projection	scale	sheet no	total sheets
		1:1	72587	54

ACAD

PDM: Rev:F

STATUS:Released

22526

Printed: Mar 10, 2007