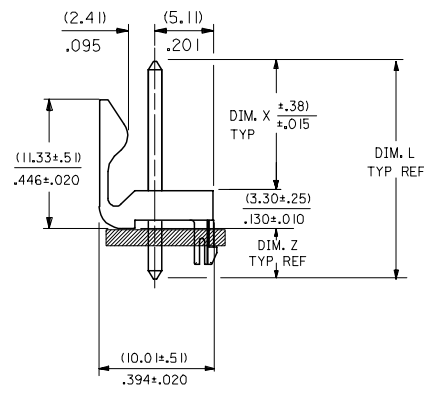
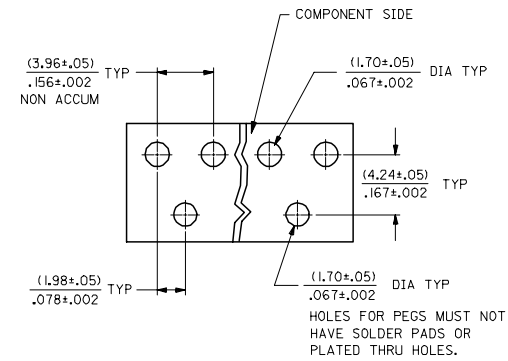
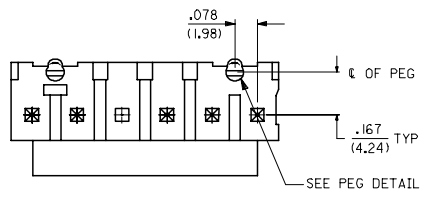
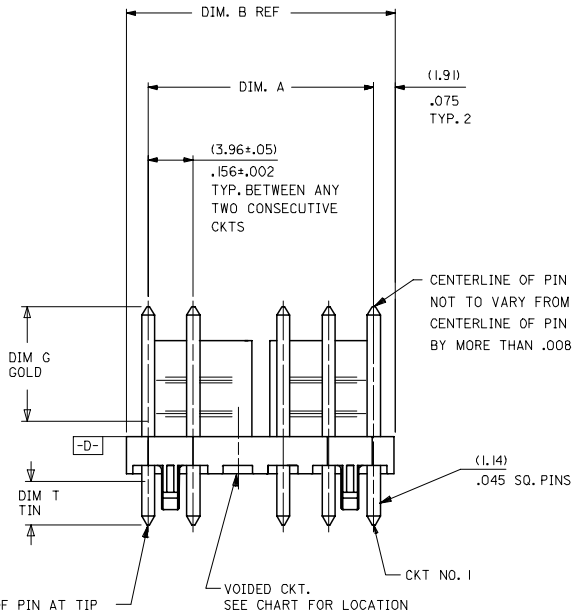


PEG DETAIL



CENTERLINE OF PIN AT TIP
NOT TO VARY FROM
CENTERLINE OF PIN AT DATUM -D-
BY MORE THAN .005 IN ANY DIRECTION



RECOMMENDED PC BOARD HOLE LAYOUT
FOR .062 THK PCB

HOLES FOR PEGS MUST NOT
HAVE SOLDER PADS OR
PLATED THRU HOLES.

NO. OF CKT'S.	DIM. A	DIM. B	NO. OF PEGS
2	(3.96±.05) / .156±.002	(7.77) / .306	1
3	(7.92±.08) / .312±.003	(11.73) / .462	2
4	(11.89±.08) / .468±.003	(15.70) / .618	2
5	(15.85±.10) / .624±.004	(19.66) / .774	2
6	(19.81±.10) / .780±.004	(23.62) / .930	2
7	(23.77±.10) / .936±.004	(27.58) / 1.086	2
8	(27.74±.13) / 1.092±.005	(31.55) / 1.242	2
9	(31.70±.13) / 1.248±.005	(35.51) / 1.398	2
10	(35.66±.13) / 1.404±.005	(39.47) / 1.554	2
11	(39.62±.15) / 1.560±.006	(43.43) / 1.710	2
12	(43.59±.15) / 1.716±.006	(47.40) / 1.866	2
13	(47.55±.15) / 1.872±.006	(51.36) / 2.022	2
14	(51.51±.18) / 2.028±.007	(55.32) / 2.178	2
15	(55.47±.18) / 2.184±.007	(59.28) / 2.334	2
16	(59.44±.18) / 2.340±.007	(63.25) / 2.490	2
17	(63.40±.20) / 2.496±.008	(67.21) / 2.646	2
18	(67.36±.20) / 2.652±.008	(71.17) / 2.802	2

NOTES:

- SOLDERABILITY: WHEN PARTS ARE SOLDERED AT A TEMPERATURE OF 230°C (446°F) FOR 5 SECONDS, EACH SOLDERED SURFACE SHALL BE A MINIMUM OF 95% COVERED WITH A SMOOTH CONTINUOUS ADHERENT COATING. FOR OTHER INFORMATION SEE ES-152.
- PIN PUSH OUT FORCE: PRIOR TO SOLDERING, A 3 POUND MINIMUM FORCE (IN EITHER DIRECTION) SHALL BE REQUIRED TO PUSH THE PIN OUT OF THE HEADER.
- FOR ADDITIONAL INFORMATION AND TESTING PROCEDURES SEE PS-08-50.
- PARTS ARE STACKABLE END TO END ON (3.96) / .156 CENTERS.
- FOR PART WITHOUT PEG SEE DWG. NO. SDA-41791

MATERIAL: HEADER: GLASS FILLED POLYESTER, 94V-0, MOLDED NATURAL (WHITE).

FINISH: PER ES-88

- (102) OVERALL TIN: 5.08 MICROMETERS MIN OVER 2.54 MIN COPPER.
- (154) OVERALL TIN: 2.54 MICROMETERS MIN OVER 1.27 MIN NICKEL.
- (208) SELECT GOLD: 0.38 MICROMETERS MIN,
 - SELECT TIN: 2.54 MICROMETERS MIN,
 - OVERALL NICKEL UNDERPLATE: 1.27 MICROMETERS MIN.
- (228) SELECT GOLD: 0.76 MICROMETERS MIN,
 - SELECT TIN: 2.54 MICROMETERS MIN,
 - OVERALL NICKEL UNDERPLATE: 1.27 MICROMETERS MIN.

*THE PRIMARY SHIPPING CARTON WILL BE LABELED "COMPLIANT TO ROHS DIRECTIVE 2002/95/EC AND ELV ANNEX II OF DIRECTIVE 2000/53/EC". CARTONS WITHOUT THIS LABEL MAY CONTAIN PRODUCT WITH TIN-LEAD PLATING.

ME10 & ADD PARTS EC NO: UCP2005-1109 DRWN:ADRA1NOL 2004/12/23 CHKD:SAMIEC 2008/05/04/05 APPR:YMAR/GJULIUS 2008/05/07/02	QUALITY SYMBOLS 	GENERAL TOLERANCES (UNLESS SPECIFIED) mm INCH 4 PLACES ± --- ± --- 3 PLACES ± --- ± --- 2 PLACES ± --- ± --- 1 PLACE ± --- ± --- ANGULAR ±1/2°	DIMENSION STYLE MM/IN DRAWN BY: SAMIEC DATE: 01/16/91 CHECKED BY: DATE: PATEL 01/16/91 APPROVED BY: DATE: LENZ 01/16/91	SCALE --- DESIGN UNITS METRIC THIRD ANGLE PROJECTION	
	DRAFT WHERE APPLICABLE MUST REMAIN WITHIN DIMENSIONS			MATERIAL NO. SEE CHART	DOCUMENT NO. SDA-42891
	SIZE C THIS DRAWING CONTAINS INFORMATION THAT IS PROPRIETARY TO MOLEX INCORPORATED AND SHOULD NOT BE USED WITHOUT WRITTEN PERMISSION			SHEET NO. 1 OF 4	MOLEX MOLEX INCORPORATED
	FRICITION LOCK HEAD ASSY .156 CENTERS STR SQ PINS W/PEGS				

