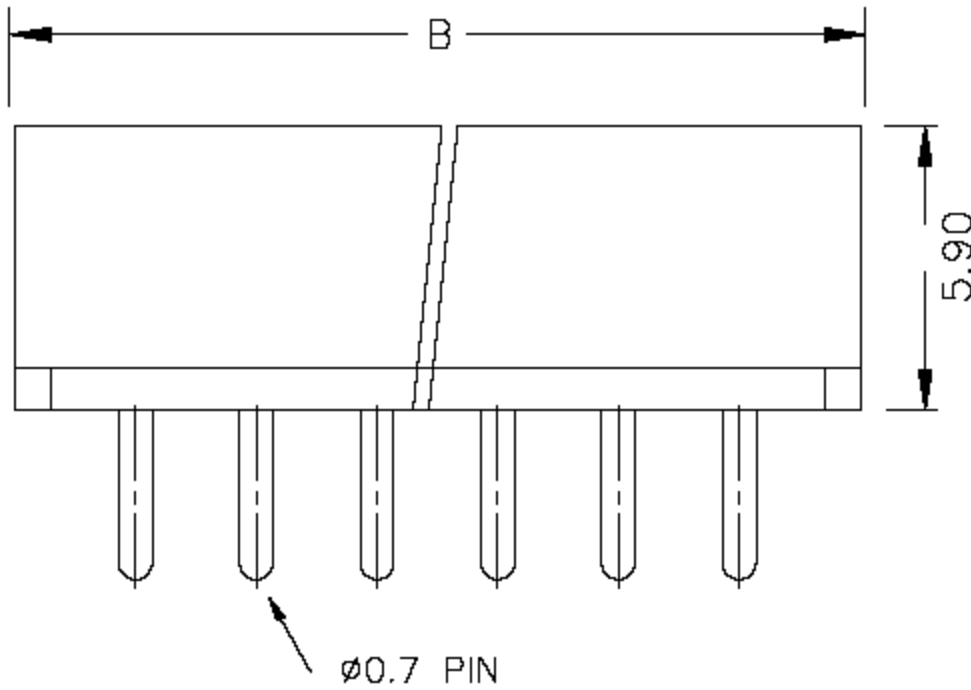
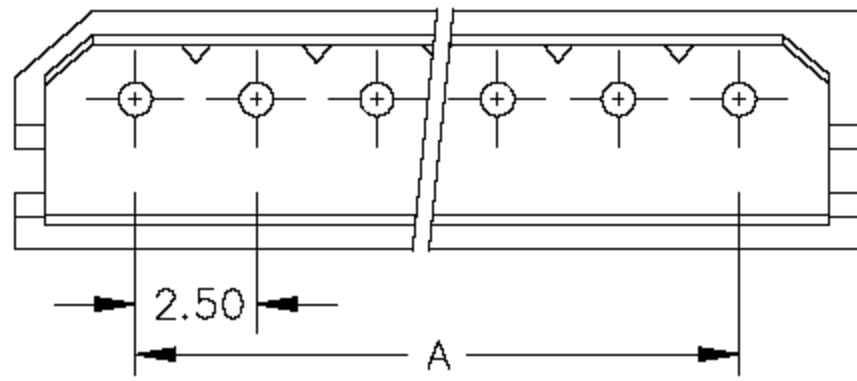


CUSTOMER COPY



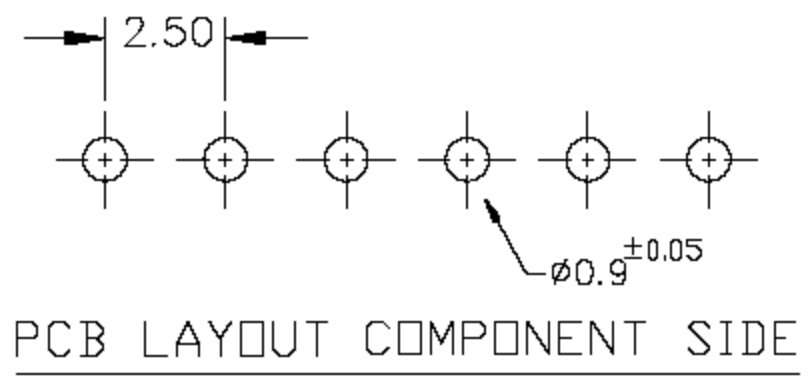
ORDER INFORMATION
 1221 3 0 1 XX 1


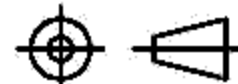
- Plating: 1: Tin
- No. Of Contact (02 ~ 15)
- Style 1: Without Kink
0: Straight
- Type 3: MH Type

Specifications

Current Rating: 3A AC, DC
 Voltage Rating: 250 AC Maximum
 Operating Temp: -25°C ~ + 85°C
 Contact Resistance: 20MΩ Max
 Insulation Resistance: 1000MΩ Min
 Terminal Material: Brass/ Tin-plated/ Gold-plated
 Material: Nylon 66, UL94V-0

Poles	Dimension mm (in.)		Note.
	A	B	
2	2.50	7.50	
3	5.00	10.00	
4	7.50	12.5	
5	10.00	15.00	
6	12.50	17.50	
7	15.00	20.00	
8	17.50	22.50	
9	20.00	25.00	
10	22.50	27.50	
11	25.00	30.00	
12	27.50	32.50	
13	30.00	35.00	
14	32.50	37.50	
15	35.50	40.00	



 ACMELUX CO., LTD. TEL:886-85124595 FAX:886-85124322		TITLE:		PART NO:
		2.5mm Wire-to-Board Header DIP 180° Type		APP BY: HUNG
0.0± 0.30 0.00± 0.20 0.000±		SCALE: UNIT: MM	MATL:	CHK BY: CHERYL
		DWG. NO. C1221301XX1	DR BY: ADER	A140

REV	ECN NO.	APP.	DATE
A	NEW DESIGN		