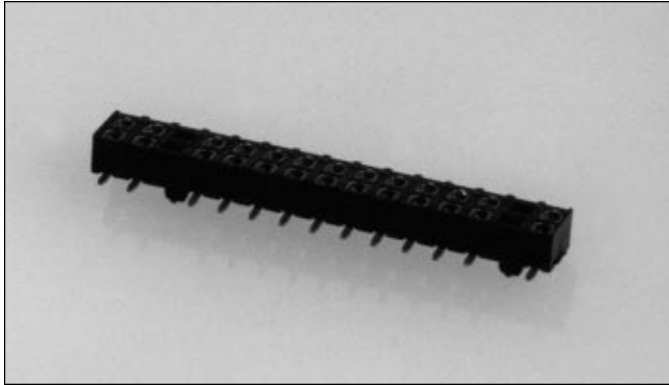


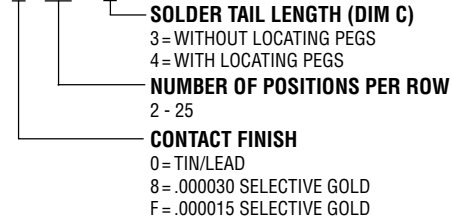
.079" (2mm) Low Profile Surface Mount Dual Row Bottom Entry Connectors



8000 SERIES "POST/BOXE"

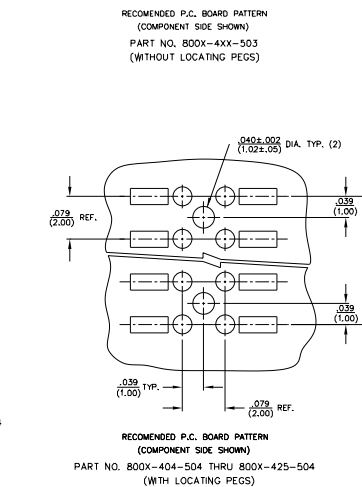
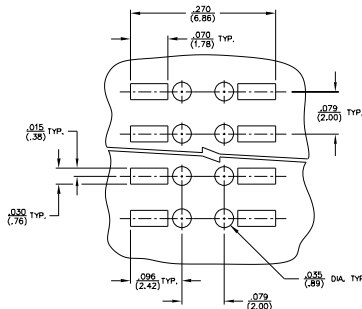
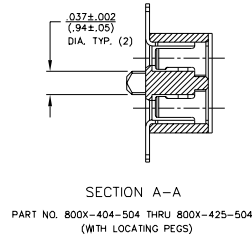
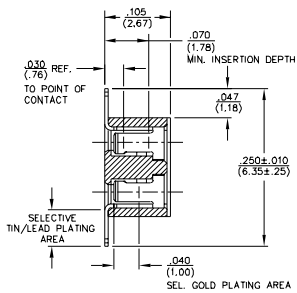
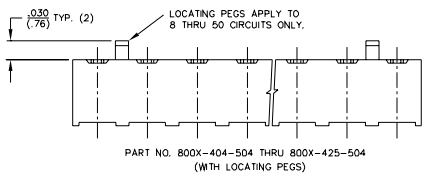
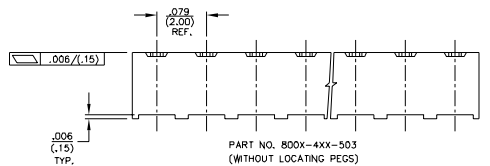
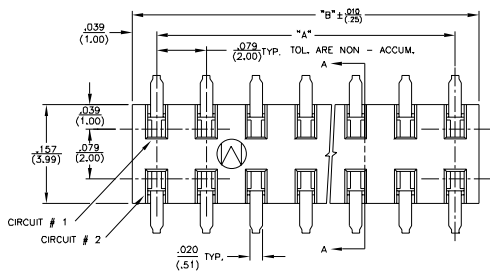
PART NUMBER LEGEND

800X-4XX-50X



MATING HEADERS: 8100 SERIES

ADDITIONAL SPECIFICATIONS



NOTES :

- INSULATOR MATERIAL :
800X-4XX-50X - GLASS-FILLED, POLYESTER (PCT), UL 94V-0
COLOR : BLACK
- CONTACT MATERIAL : PHOSPHOR BRONZE.
- CONTACT FINISH :
800G-4XX-50X : .0001-.0002 90/10 TIN/LEAD OVER NICKEL PLATE.
800B-4XX-50X : .000050 NICKEL PLATE ALL OVER; .000030 SEL. GOLD PLATING IN CONTACT AREA; .0001-.0002 90/10 TIN/LEAD PLATING ON SOLDER TAIL.
800E-4XX-50X : .000050 NICKEL PLATE ALL OVER; .000015 SEL. GOLD PLATING IN CONTACT AREA; .0001-.0002 90/10 TIN/LEAD PLATING ON SOLDER TAIL.
800P-4XX-50X : (POST-SHEAR PLATING) .000050 NICKEL PLATE ALL OVER; .000030 SEL. GOLD PLATING IN CONTACT AREA; .0001-.0002 90/10 TIN/LEAD PLATING ON SOLDER TAIL.
800S-4XX-50X : (POST-SHEAR PLATING) .000050 NICKEL PLATE ALL OVER; .000015 SEL. GOLD PLATING IN CONTACT AREA; .0001-.0002 90/10 TIN/LEAD PLATING ON SOLDER TAIL.
- ALL DIMENSIONS ARE IN IN./ (MM)

PART NUMBER	NO. OF CIRCUITS	DIM. "A"	DIM. "B"
800X-402-50X	4	.079 (2.00)	.158 (4.00)
-403-	6	.158 (4.00)	.236 (6.00)
-404-	8	.236 (6.00)	.315 (8.00)
-405-	10	.315 (8.00)	.394 (10.00)
-406-	12	.394 (10.00)	.472 (12.00)
-407-	14	.472 (12.00)	.551 (14.00)
-408-	16	.551 (14.00)	.630 (16.00)
-409-	18	.630 (16.00)	.709 (18.00)
-410-	20	.709 (18.00)	.787 (20.00)
-411-	22	.787 (20.00)	.866 (22.00)
-412-	24	.866 (22.00)	.945 (24.00)
-413-	26	.945 (24.00)	1.024 (26.00)
-414-	28	1.024 (26.00)	1.102 (28.00)
-415-	30	1.102 (28.00)	1.181 (30.00)
-416-	32	1.181 (30.00)	1.260 (32.00)
-417-	34	1.260 (32.00)	1.339 (34.00)
-418-	36	1.339 (34.00)	1.417 (36.00)
-419-	38	1.417 (36.00)	1.496 (38.00)
-420-	40	1.496 (38.00)	1.575 (40.00)
-421-	42	1.575 (40.00)	1.654 (42.00)
-422-	44	1.654 (42.00)	1.732 (44.00)
-423-	46	1.732 (44.00)	1.811 (46.00)
-424-	48	1.811 (46.00)	1.890 (48.00)
800X-425-50X	50	1.890 (48.00)	1.968 (50.00)