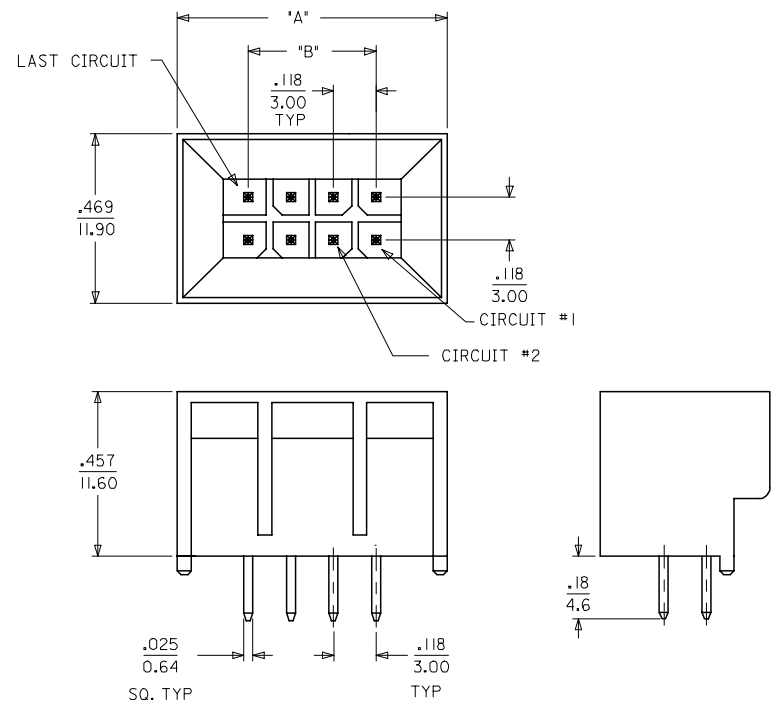


13 12 11 10 9 8 7 6 5 4 3 2 1

J  
I  
H  
G  
F  
E  
D  
C  
B  
A

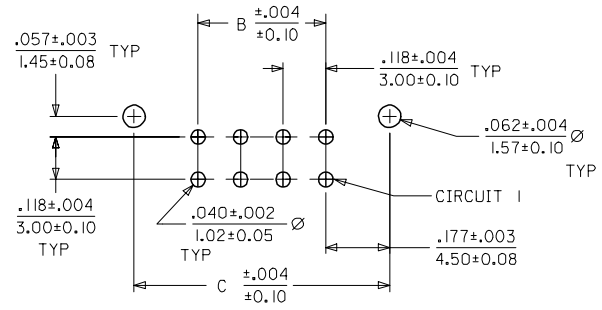


CIRCUIT SIZE	"A"	"B"	"C"
04	.512 13.00	.118 3.00	.472 12.00
06	.630 16.00	.236 6.00	.590 15.00
08	.748 19.00	.354 9.00	.709 18.00
10	.866 22.00	.472 12.00	.827 21.00
12	.984 25.00	.590 15.00	.945 24.00
14	1.102 28.00	.709 18.00	1.063 27.00
16	1.220 31.00	.827 21.00	1.181 30.00
18	1.338 34.00	.945 24.00	1.299 33.00
20	1.457 37.00	1.063 27.00	1.417 36.00
22	1.575 40.00	1.181 30.00	1.535 39.00
24	1.693 43.00	1.299 33.00	1.653 42.00

MATERIAL NUMBER	NUMBER OF POSITIONS	PLATING OPTION
45265-0401	04	A
45265-0402	04	B
45265-0403	04	C
45265-0601	06	A
45265-0602	06	B
45265-0603	06	C
45265-0801	08	A
45265-0802	08	B
45265-0803	08	C
45265-1001	10	A
45265-1002	10	B
45265-1003	10	C
45265-1201	12	A
45265-1202	12	B
45265-1203	12	C
45265-1401	14	A
45265-1402	14	B
45265-1403	14	C
45265-1601	16	A
45265-1602	16	B
45265-1603	16	C
45265-1801	18	A
45265-1802	18	B
45265-1803	18	C
45265-2001	20	A
45265-2002	20	B
45265-2003	20	C
45265-2201	22	A
45265-2202	22	B
45265-2203	22	C
45265-2401	24	A
45265-2402	24	B
45265-2403	24	C

NOTES:

- MATERIALS:  
HOUSING : HIGH TEMP NYLON ,GLASS-FILLED, UL94V-0, COLOR - BLACK  
TERMINAL : BRASS ALLOY
- FINISH:  
A= .000200/(0.00051) TIN OVER .000050/(0.0013) NICKEL.  
B= .000015/(0.00038) MIN GOLD IN SELECTIVE AREA;  
.000050/(0.0013) MIN TIN ON SOLDER TAILS BOTH OVER .000050/(0.0013) NICKEL.  
C= .000030/(0.00076) MIN GOLD IN SELECTIVE AREA;  
.000050/(0.0013) MIN TIN ON SOLDER TAILS BOTH OVER .000050/(0.0013) NICKEL.  
\*THE PRIMARY SHIPPING CARTON WILL BE LABELED 'COMPLIANT TO RoHS DIRECTIVE 2002/95/EC AND ELV ANNEX II OF DIRECTIVE 2000/53/EC'. CARTONS WITHOUT THIS LABEL MAY CONTAIN PRODUCT WITH TIN-LEAD PLATING.
- PRODUCT SPECIFICATION: PS-44300-001
- PACKAGING SPECIFICATION: PK-45265-001
- THIS ASSEMBLY MATES WITH MOLEX MICRO-FIT BMI RECEPTACLE'S (SEE DRAWNGS SD-44133-001, SD-44764-00, SD-44769-001, AND TERMINAL DRAWING SD-43030-\*\*\*)



PCB LAYOUT: COMPONENT SIDE  
RECOMMENDED PCB THICKNESS .125/3.18

TRANSLATE TO ME10 EC NO: UCP2005-1038 DRAWN BY: DRWNRHOLTS CHECKED BY: CHKD:SSOUSEK APPR:FSM:TH 2004/11/29 2004/12/01 2004/12/02	QUALITY SYMBOLS 	GENERAL TOLERANCES (UNLESS SPECIFIED)		DIMENSION STYLE IN/MM		SCALE 4:1	DESIGN UNITS INCH	THIRD ANGLE PROJECTION	
		4 PLACES ± --- ± --- 3 PLACES ± --- ± .010 2 PLACES ± 0.25 ± .015 1 PLACE ± 0.38 ± --- ANGULAR ± 1 °	mm INCH	DRAWN BY BURLERSON	DATE 2001/10/09	CHECKED BY MUELLER	DATE 2001/10/09	TITLE MICRO FIT (3.0) DUAL ROW VERTICAL BMI HEADER FOR .125 PCB	
DRAFT WHERE APPLICABLE MUST REMAIN WITHIN DIMENSIONS		APPROVED BY MARGULIS		DATE 2001/10/09		MOLEX INCORPORATED			
MATERIAL NO.		SEE CHART		DOCUMENT NO. SD-45265-001		SHEET NO. 1 OF 1		THIS DRAWING CONTAINS INFORMATION THAT IS PROPRIETARY TO MOLEX INCORPORATED AND SHOULD NOT BE USED WITHOUT WRITTEN PERMISSION	

12 11 10 9 8 7 6 5 4 3 2 1