

### C-Series Fast Single Diode Modules

$I_T(AV)$ @ $T_C$ (Amps)      (°C)	$V_{RRM}$ (Volts)	$I_{FSM}$ (Amps)	$t_{rr}$ (typical) ( $\mu$ sec)	$V_{ISOL}$ ( $V_{RMS}$ )	Package	Type No.	
20	121	600	200	.5	2500	CS3	CS340602
20	121	1000	200	.5	2500	CS3	CS341002
20	121	1200	200	.5	2500	CS3	CS341202
50	105	600	500	.5	2500	CS2	CS240650
50	105	1000	500	.5	2500	CS2	CS241050
50	105	1200	500	.5	2500	CS2	CS241250
100	60	600	1000	.5	2500	CS2	CS240610
100	60	1000	1000	.5	2500	CS2	CS241010
100	60	1200	1000	.5	2500	CS2	CS241210
200	60	1000	—	.5	2500	CS2	CS241020**
300	60	1000	6000	.5	2500	CS6	CS641230**



\*\*New product or under development

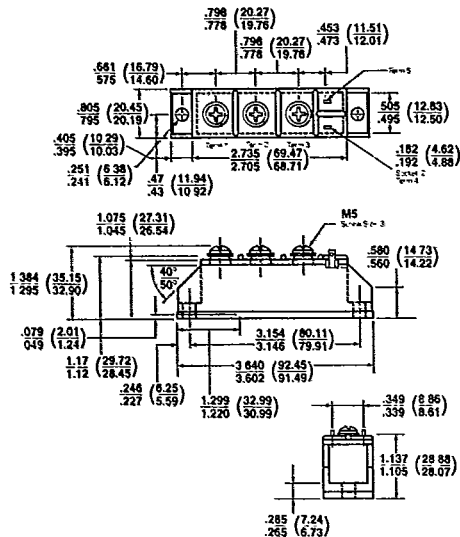
### C-Series Single Diode Modules

$I_T(AV)$ @ $T_C$ (Amps)      (°C)	$V_{RRM}$ (Volts)	$I_{FSM}$ (Amps)	$t_{rr}$ (typical) ( $\mu$ sec)	$V_{ISOL}$ ( $V_{RMS}$ )	Package	Type No.	
100	113	400	2400	7	2500	CS4	CS410499
100	113	600	2400	7	2400	CS4	CS410699
100	113	800	2400	7	2500	CS4	CS410899
100	113	1200	2400	7	2500	CS4	CS411299
100	113	1400	2400	7	2500	CS4	CS411499
100	113	1600	2400	7	2500	CS4	CS411699
100	113	2000	2400	7	2500	CS4	CS412099
100	113	2400	2400	7	2500	CS4	CS412499

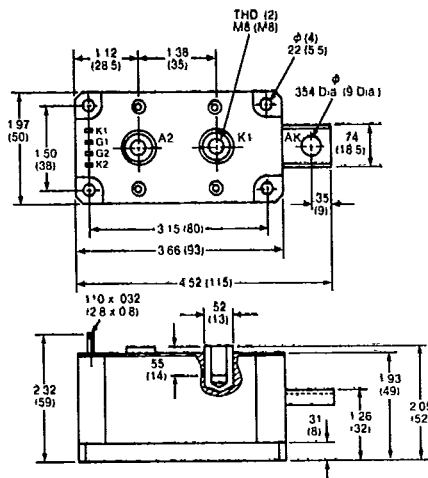


# Thyristor and Diode Modules Outline Drawings

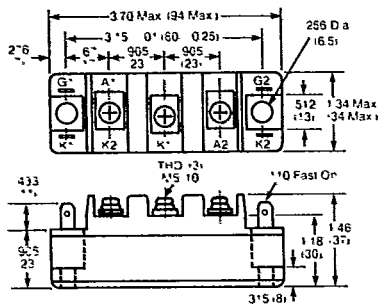
CD



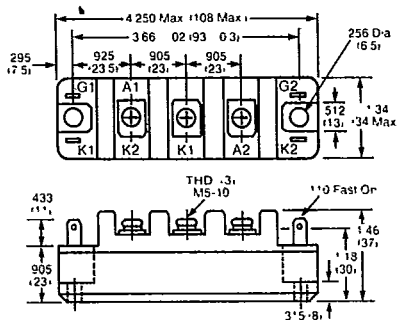
ED



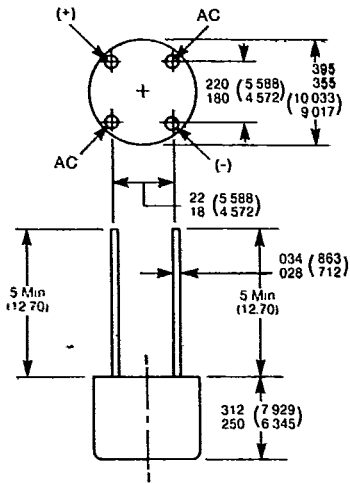
GDM-1210



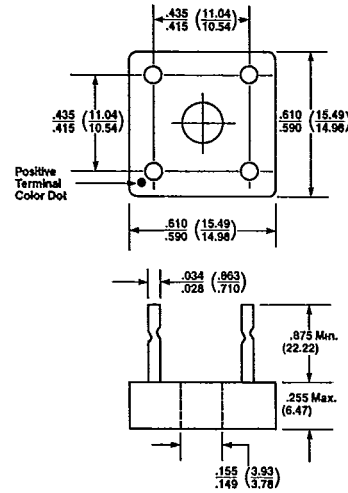
GDM-1220



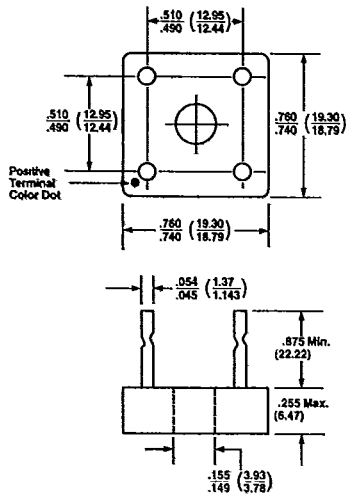
MB11A01



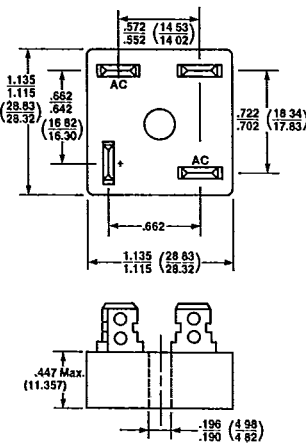
MB11A02



MB11A06



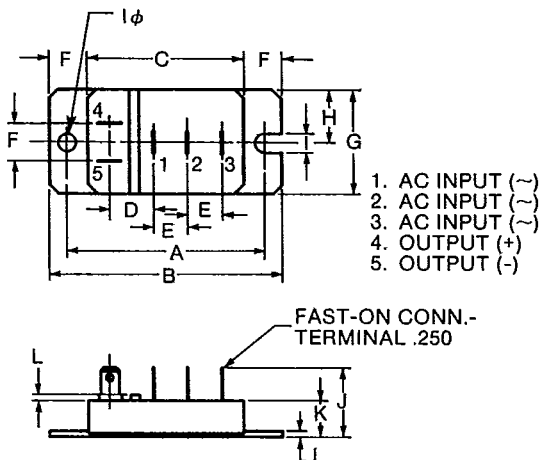
MB12



# Thyristor and Diode Modules Outline Drawings

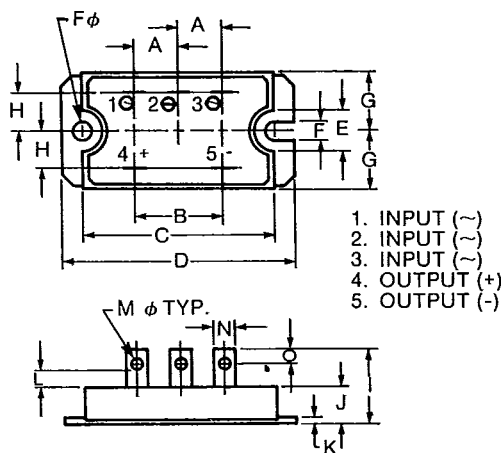
**ME10**

Dim	Inches	Metric
A	2.68±.020	68.0±0.5
B	3.15±.020	80.0±0.5
C	2.126	54.0
D	.591	15.0
E	.472	12.0
F	.512±.020	13.0±0.5
G	1.42±.020	29.0±0.5
H	.571	14.5
I	.256	6.5
J	1.102 MAX.	28.0 MAX.
K	.512	13.0
L	.079	2.0



**ME20**

Dim	Inches	Metric
A	.591±.020	15±0.5
B	1.181±.020	30±0.5
C	2.60±.008	66±0.2
D	3.15	80 Max.
E	.551	14.0
F	.256	6.5
G	.787	20.0
H	.512	13.0
I	1.004±.020	25.5±0.5
J	.492±.020	12.5±0.5
K	.079±.012	2.0±0.3
L	.197	5 Min.
M	.165	4.2
N	.295	7.5
O	.177	4.5



**ME30**

Dim	Inches	Metric
A	.709±.012	18±0.3
B	1.417±.020	36±0.5
C	2.60±.008	66±0.2
D	.670	16.0
E	.551	14.0
F	.256	6.5
G	.787	20.0
H	1.063	27 Max.
I	1.102	28 Max.
J	.906	23 Max.
K	3.15	80 Max.
M	.374	9.5
N	.315	8.0 Min.

