

Zero Crossing Triac Couplers

Single Channel DIP, Zero Voltage Crossing Triac

Part Number	Features	Input Trigger Current VTM = 3V MAX (mA)	Isolation Breakdown Voltage V (Peak)	Continuous Forward Current MAX (mA)	Peak Blocking Voltage MIN (V)	Peak Off-State Reverse Current VDRM = Rated MAX (nA)	Zero Crossing Inhibit Voltage IFT = Rated MAX (V)	Package
MOC3030	Optically Coupled pair with Infrared LED and Monolithic Silicon Detector Performing the Functions of Zero Voltage Crossing Bilateral Triac Drivers	30	7500	50	250	100	25	1
MOC3031		15						
MOC3032		10						
MOC3040		30			400			
MOC3041		15						
MOC3042		10						
IS620		30			600			
IS621		15						
IS622		10						
IS623		5						

Triac Couplers

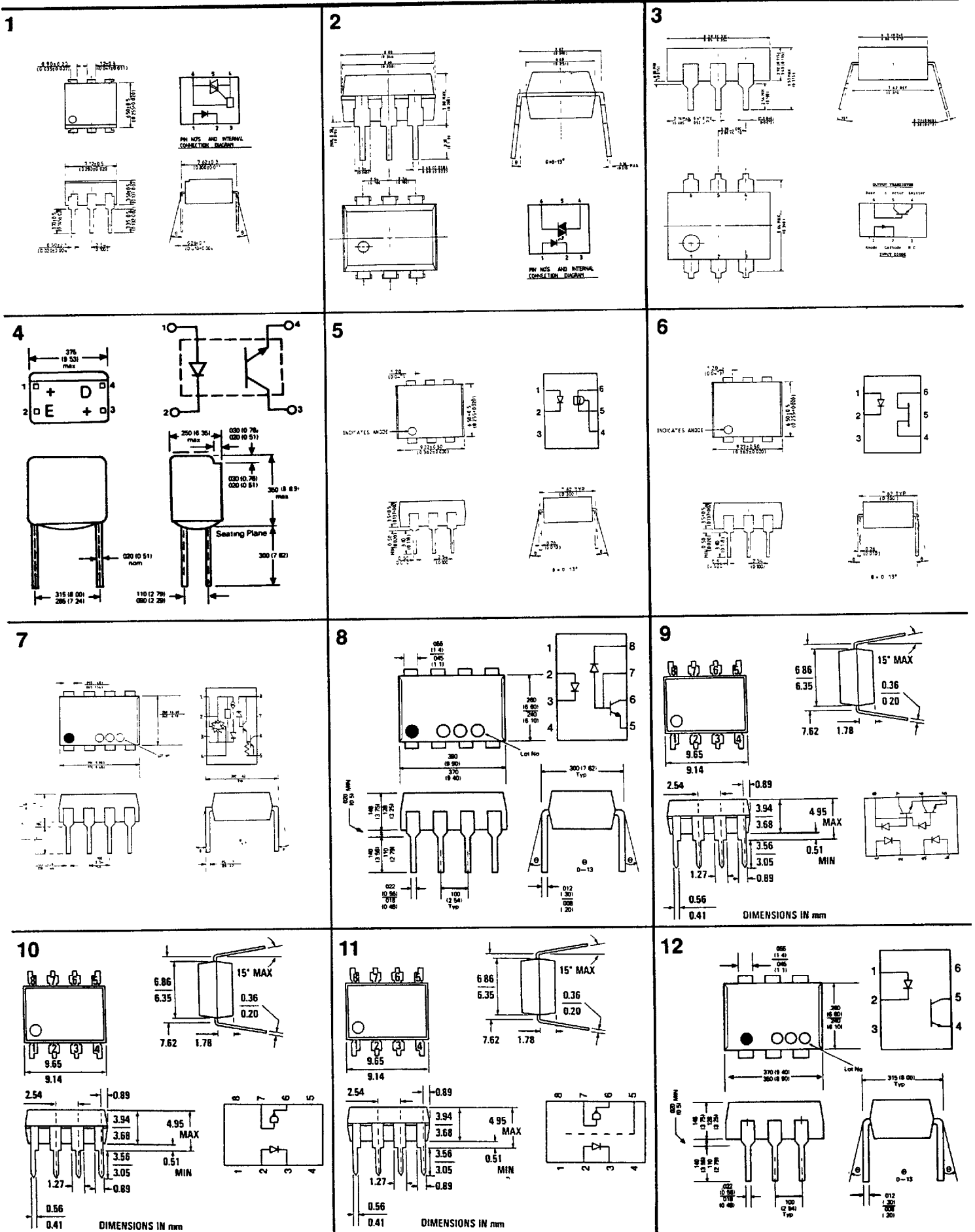
Single Channel DIP, Light Activated Triac

Part Number	Features	Input Trigger Current VTM = 3V RL = 150 Ω MAX (mA)	Isolation B'kdown Voltage V(RMS)	Continuous Forward Current MAX (mA)	PIV LED @ 10 uA MIN (V)	Peak Off-State Reverse Current VDRM = Rated MAX (nA)	Peak Blocking Voltage MIN (V)	Package
H11J1	Optically Coupled Pair with Infrared LED Emitter and Light Activated Silicon Bilateral Switch	10	3600	60	3	100	250	2
H11J2		15	3600					
H11J3		10	2250					
H11J4		15	2250					
H11J5		25	1350					
IS3020		30	2500				400	
IS3021		15	2500				400	
IS607		10	4000				450	
IS608		7	4000				450	
MOC 3009		30	7500 (Peak)				250	
MOC 3010		15						
MOC 3011		10						

High Isolation Opto-Couplers

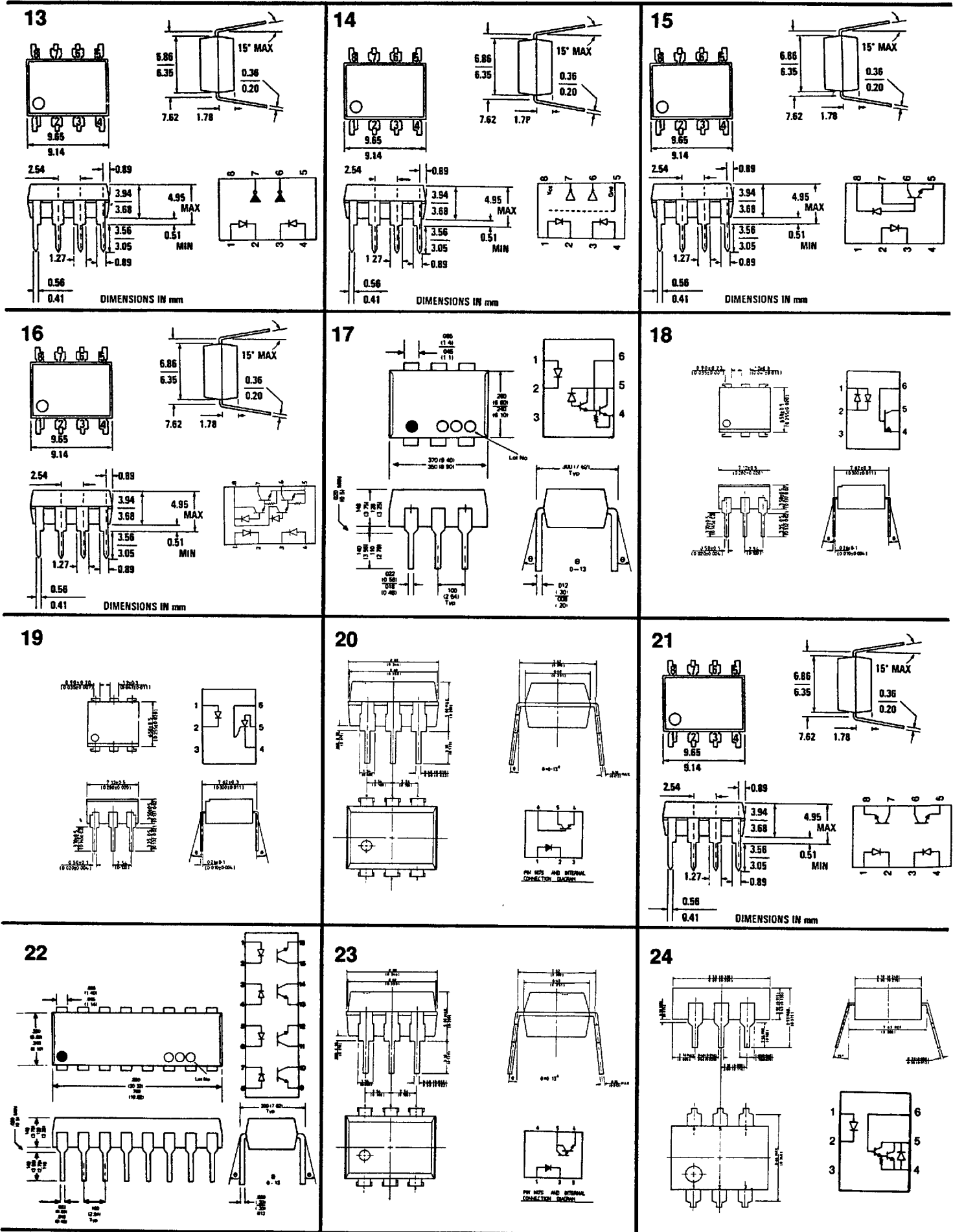
Part Number	Features	Current Transfer Ratio I _F =10mA Min (%)	Isolation Breakdown Voltage (V)	Continuous Forward Current Max (mA)	V _{CEO} @ 1mA Min (V)	I _{CEO} (Dark) V _{CE} =10V Max (nA)	V _{CE} Sat Max (V)	Package
H11AV1	Optically Coupled Pair with internal Distance between emitter and detector of 2mm min. and creepage distance of 8mm min. suitable for VDE and Brit. Std. Applications	100-300	4000 (RMS)	60	70	50	0.4 I _F = 20mA I _C = 2mA	3
H11AV2		50						
H11AV3		20						
H24A1	Optically Coupled Pair Housed in a 4 Pin Plastic Package	100	5300 (PEAK)	60	30	100	0.4 I _F = 10mA I _C = 0.5mA	4
H24A2		20						
IS1100	Optically Coupled Pair with Internal Distance between emitter and detector of 4mm min. Housed in a 4 Pin Plastic Package "G" denotes leads spread to 10mm	100	11000 (PEAK)	60	30	100	0.4 I _F = 10mA I _C = 0.5mA	30
IS1050		50						
IS1020		20						
IS1100G		100						
IS1050G		50						
IS1020G		20						

Package Dimensions in inches (mm)

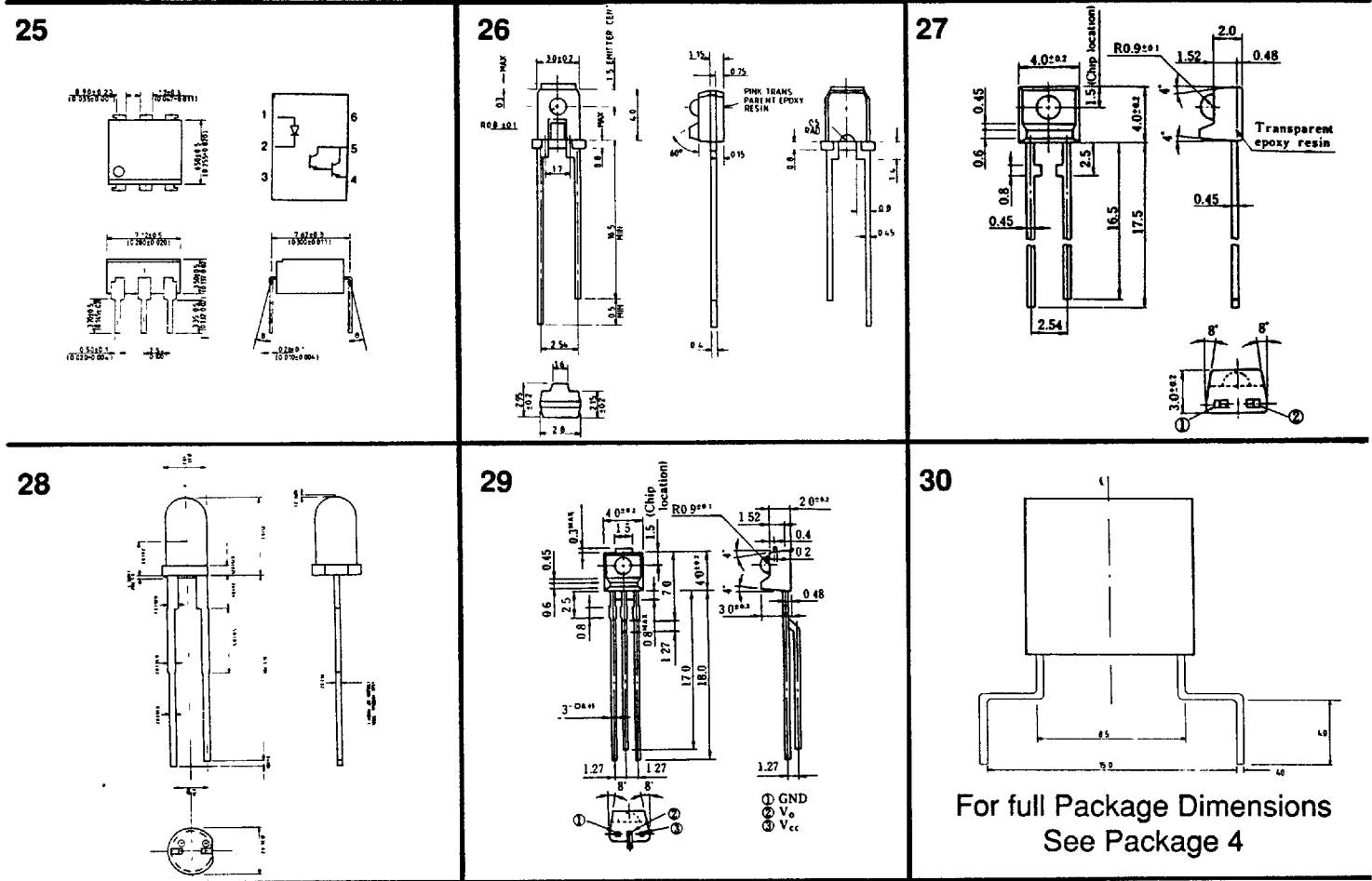


PLEASE NOTE - THESE PACKAGE DIMENSIONS ARE INTENDED ONLY AS A GUIDE, FOR ADDITIONAL INFORMATION PLEASE CONTACT ISOCOM COMPONENTS

Package Dimensions in inches (mm)

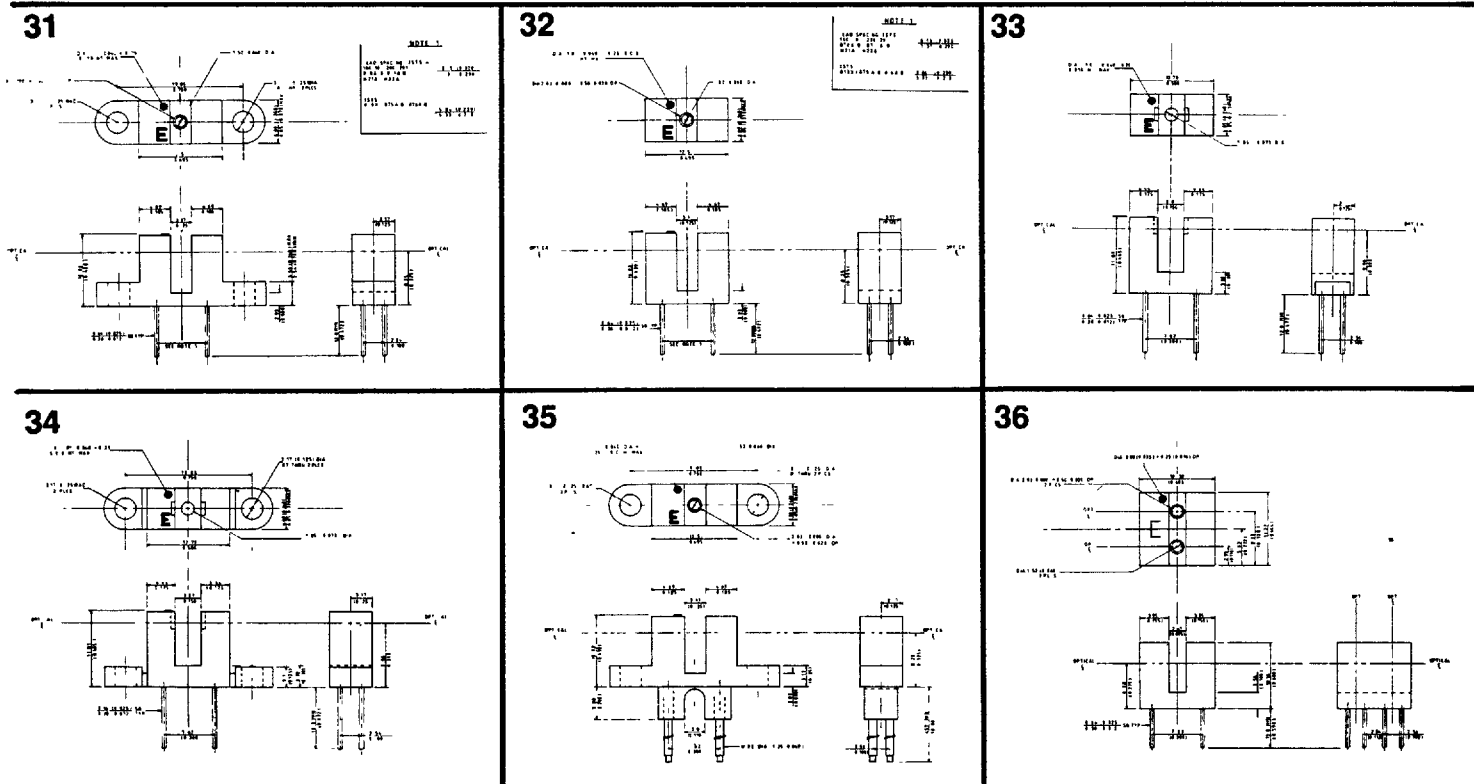


Package Dimensions in inches (mm)



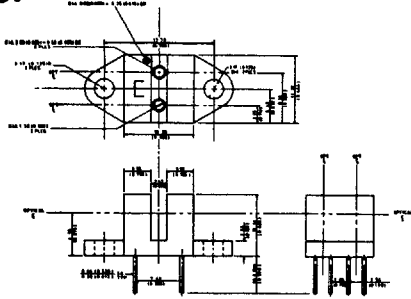
Switch Packages

NOTES: 1. Lead Spacing-1STS 100/101/200/201/ .320(8.13) 1STS 813X//875A-B/876A-B .230(5.84) NOTE These dimensions apply to standard products only
 /870A-B/871A-B/H21A/H22A .290(7.37) .210(5.33)

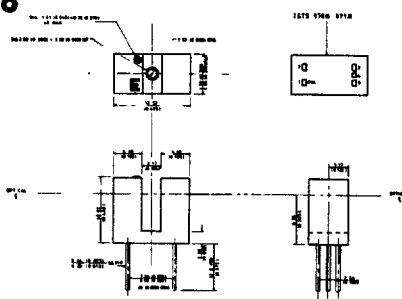


PLEASE NOTE - THESE PACKAGE DIMENSIONS ARE INTENDED ONLY AS A GUIDE, FOR ADDITIONAL INFORMATION PLEASE CONTACT ISOCOM COMPONENTS

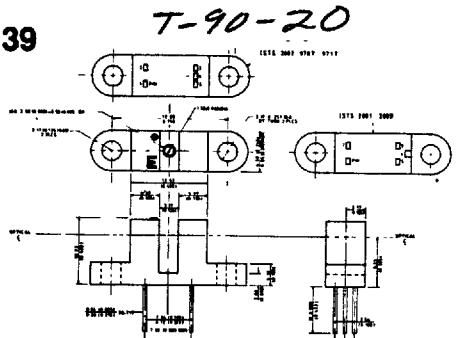
37



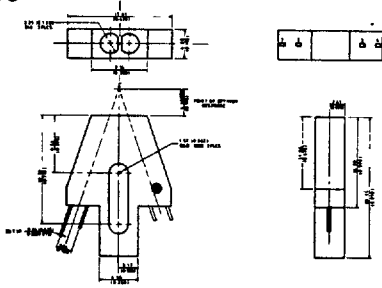
38



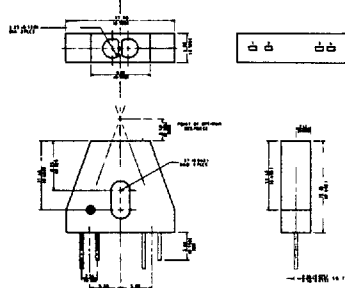
39



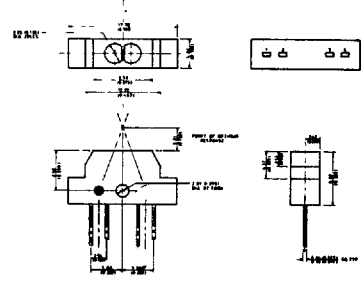
40



41



42



SCHEMATICS

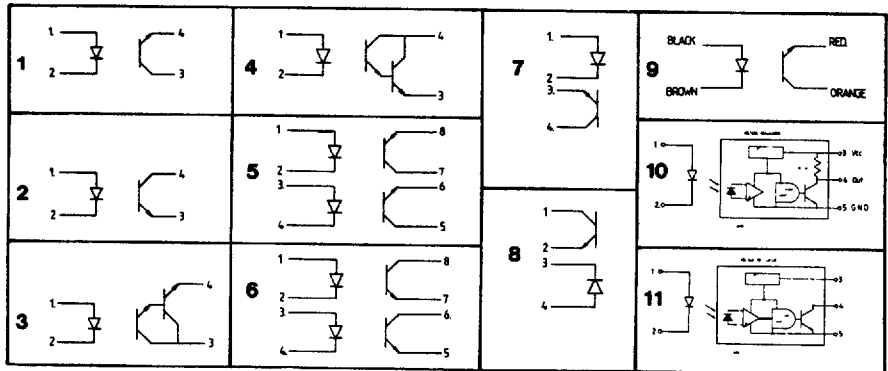
NOTES COVERING SWITCHES

Lead Spacing – the standard interruptor switches are available with two standard lead spacings:

- 1. 0.320 (8.13)
- 0.290 (7.37)

- 2. 0.230 (5.84)
- 0.210 (5.33)

Housing material – Polycarbonate



ALPHANUMERIC INDEX

Part	Page	Part	Page	Part	Page	Part	Page	Part	Page
4N25	5	H11D4	5	IS1050G	2	ISD-5	6	ISTS823A	9
4N26	5	H11F1	3	IS1020	2	ISD-74	6	ISTS824A	9
4N27	5	H11F2	3	IS1020G	2	ISD201	6	ISTS832S	9
4N28	5	H11G1	7	IS1100	2	ISD202	6	ISTS832SD	9
4N29	6	H11G2	7	IS1100G	2	ISD203	6	ISTS870A/B	8
4N30	6	H11G3	7	IS201	5	ISPD60	7	ISTS871A/B	8
4N31	6	H11J1	2	IS202	5	ISPD61	7	ISTS875A/B	8
4N32	6	H11J2	2	IS203	5	ISPD62	7	ISTS876A/B	8
4N33	6	H11J3	2	IS204	5	ISPD63	7	ISTS904	8
4N35	5	H11J4	2	IS205	3	ISPD64	7	ISTS970TN	10
4N36	5	H11J5	2	IS206	3	ISPD65	7	ISTS971TN	10
4N37	5	H11L1	3	IS2040	6	ISQ1	6	MCA2-55	6
4N38	5	H11L2	3	IS2040G	6	ISQ201	6	MCS2400	4
4N38A	5	H21A1	8	IS2060	6	ISQ202	6	MCT 2	4
4N39	4	H21A2	8	IS2060G	6	ISQ203	6	MCT 2E	4
4N40	4	H21B1	10	IS2100	6	ISQ5	6	MCT 6	6
4N45	4	H21B2	10	IS2100G	6	ISQ74	6	MOC3009	2
4N46	4	H21B3	10	IS3020	2	ISTS100	8	MOC3010	2
6N135	3	H22A1	8	IS3021	2	ISTS101	8	MOC3011	2
6N136	3	H22A2	8	IS604	4	ISTS149	10	MOC3030	2
6N137	3	H22B1	10	IS605	4	ISTS150	9	MOC3031	2
6N138	4	H22B2	10	IS606	4	ISTS151	9	MOC3032	2
6N139	4	H22B3	10	IS607	2	ISTS200	8	MOC3040	2
CNY17-1	5	H24A1	2	IS608	2	ISTS2001	10	MOC3041	2
CNY17-2	5	H24A2	2	IS609	3	ISTS2002	10	MOC3042	2
CNY17-3	5	H24B1	6	IS610	3	ISTS2003	10	MOC8050	7
CNY17-4	5	H24B2	6	IS611	3	ISTS201	8	SFH600-0	5
CNY17-5	5	ICPL2502	3	IS620	2	ISTS250	9	SFH600-1	5
CNY30	4	ICPL2503	3	IS621	2	ISTS251	9	SFH600-2	5
CNY34	4	ICPL2530	3	IS622	2	ISTS300	9	SFH600-3	5
CNY35	4	ICPL2531	3	IS623	2	ISTS301	9	SFH600-4	5
H11AA1	4	ICPL2533	3	IS654A	7	ISTS400	9	SFH601-1	5
H11AV1	2	ICPL2601	3	IS655A	7	ISTS401	9	SFH601-2	5
H11AV2	2	ICPL2630	3	IS656A	7	ISTS703A	10	SFH601-3	5
H11AV3	2	ICPL2631	3	IS657A	7	ISTS708	10	SFH601-4	5
H11B1	6	ICPL2730	4	IS657B	7	ISTS804	8	SFH601-5	5
H11C4	4	ICPL2731	4	IS658A	7	ISTS805	8	SFH609-1	5
H11C5	4	ICPL3700	3	IS659	7	ISTS813S3	9	SFH609-2	5
H11C6	4	IS-1	4	IS660	7	ISTS813S5	9	SFH609-3	5
H11D1	5	IS-5	4	IS661	7	ISTS813S7	9	TIL 111	4
H11D2	5	IS-74	4	IS662	7	ISTS822S	9	TIL119	7
H11D3	5	IS1050	2	ISD-1	6	ISTS822SD	9		

All information contained within this catalogue is believed to be accurate and reliable. However, Isocom Components Ltd. and its affiliates can accept no liability for any errors or omissions, and reserve the right to change specifications without notice.

45E D 4886510 000244 J ISO

ISOCOM COMPONENTS LTD