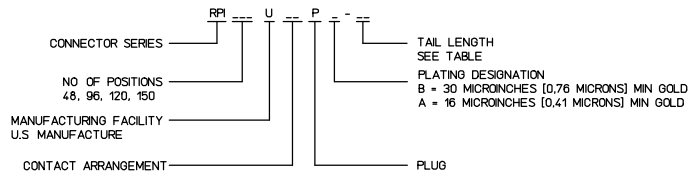


CATALOG NUMBER	NO OF POS.	A MAX	B	C ± .004 (±0.10)	D ± .004 (±0.10)	F
RP148U30P_--	48	2.140 54.36	1.943 49.35	1.758 44.65	1.861 47.27	1.500 38.10
RP196U30P_--	96	3.740 95.00	3.543 89.99	3.358 85.29	3.461 87.91	3.100 78.74
RP120U30P_--	120	4.540 115.32	4.343 110.31	4.158 105.61	4.261 108.23	3.900 99.06
RP150U30P_--	150	5.540 140.72	5.343 135.71	5.158 131.01	5.261 133.63	4.900 124.46



DESIGNATION	CONTACT POSITIONS LOADED
30	ROWS A, B AND C
31	ROWS A AND B
32	ROWS A AND C

NOTES: UNLESS OTHERWISE SPECIFIED,

MATERIAL:

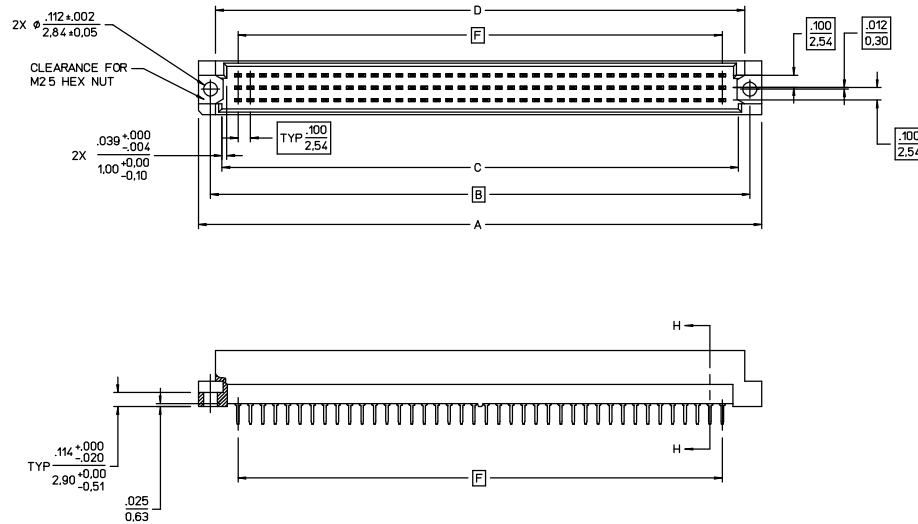
BODY: - GLASS REINFORCED POLYESTER UL 94V-0  
CONTACTS: - COPPER ALLOY

CONTACT PLATING:

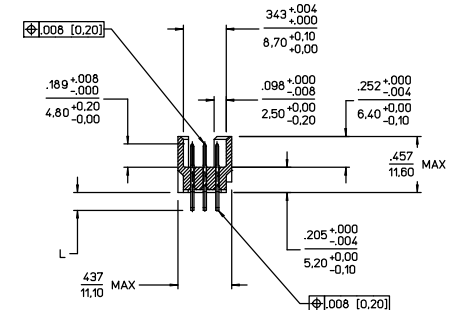
A = 16 MICRONS [0.41 MICRONS] MIN GOLD IN CONTACT AREA AND 200 MICRONS [5.08 MICRONS] MIN TIN LEAD ALLOY ON CONTACT TAILS, 50 MICRONS [1.27 MICRONS] MIN NICKEL UNDERPLATE ALL OVER

B = 30 MICRONS [0.76 MICRONS] MIN GOLD IN CONTACT AREA AND 200 MICRONS [5.08 MICRONS] MIN TIN LEAD ALLOY ON CONTACT TAILS, 50 MICRONS [1.27 MICRONS] MIN NICKEL UNDERPLATE ALL OVER

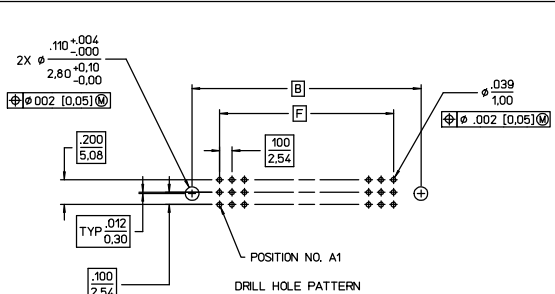
TAIL LENGTH	L ±.020(0.51)
RP1__U30P_-12	-.138 3.51
RP1__U30P_-14	-.177 4.50
RP1__U30P_-15	-.114 2.90



CATALOG NUMBER RP120U30PB\_ SHOWN



SECTION H-H



DRILL HOLE PATTERN

REFERENCE: SE88684, RP1\_\_U30R\_--

REV	REVISION DESCRIPTION	BY	CHKD	DATE
9	ADDED PLATING 'A' AND PLATING NOTE 'A' IN TABLE P_-- WAS FB_-- FOR ALL CAT NOS (ECN3149)	DHR	RPS	11-18-94
8	REVISED AND REDRAWN ON CAD SEE REV REF PRINT (ECN1986)	KFD	VCE	05-08-92
7	ADDED '31' ROWS A & B FULLY LOADED' & '32 ROWS A & C FULLY LOADED' (ECN1428)	MRF	RPS	03-16-90

ECN1986

LINEAR MEASURE:		INCH		INCH (mm)		REVERSED PI P.C.B. CONNECTOR - PLUG	
THIRD ANGLE PROJECTION		CAT NO	RP1__U30P_--	(SEE)	TABLE	SCALE	2:1
DRAWN	BC 01-07-84	DESIGN	GH 12-08-84				
CHECKED	GH 12-11-84	P MKT	RPR 12-11-84				
UNLESS OTHERWISE SPECIFIED		DRAWING NO		REV			
NO OF DECIMAL PLACES IN INCHES	INCH (mm)	SE88685		L			
ONE PLACE	±.1 (±2.5)						
TWO PLACES	±.02 (±0.5)						
THREE PLACES	±.005 (±0.13)						
ANGLES ±°							



DWG RELEASED TO CENTRAL FILE 05-12-92 CAD APPROVAL XXX XX-XX-XX