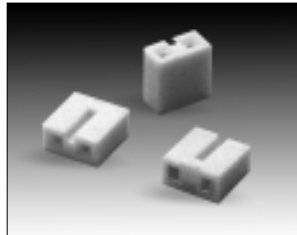


Specifications

Voltage Rating: 150 V AC
 Current Rating: 1.5A
 Operating Temperature Range: -40°C to +105°C
 Withstanding Voltage: 500 V for 1 minute

Materials and Finish

Housing: High temp plastic, UL 94V-0 listed
 Terminals: Phosphor Bronze
 Contact Plating: Tin or Gold plated



Part Number (Details)

ZJ1 - * - ** - * 1

Series No.

O = Open Top
 C = Closed Top

Height of Insulator:

35 = 3.5 mm
 50 = 5.0 mm

Plating:

G = Gold
 T = Tin

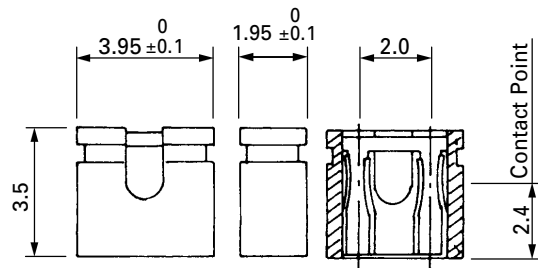
Color:

1 = Black (Standard)
 2 = Red 3 = Yellow 4 = Green
 5 = Blue 6 = Grey 7 = White

Applicable Dimensions (Reference Only)

Open Top

Height of insulator: 3.5 mm



Closed Top

Height of insulator: 5.0 mm

