

**SPECIFICATIONS**

Current Rating: 3A AC, DC  
 Voltage Rating: 350V AC, DC  
 Pin Material: Brass/Tin-Plated  
 Contact Resistance: 20mΩ Max.  
 Insulation Material: Nylon 6T, UL94V-0  
 Insulation Resistance: 1000MΩ Min.  
 Withstanding: 500V AC/min  
 Operating Temp: -25°C ~ +85°C

Dimensions		
Pins	A	B
02	1.50	4.30
03	3.00	5.80
04	4.50	7.30
05	6.00	8.80
06	7.50	10.30
07	9.00	11.80
08	10.50	13.30
09	12.00	14.80
10	13.50	16.30
11	15.00	17.80
12	16.50	19.30
13	18.00	20.80
14	19.50	22.30
15	21.00	23.80

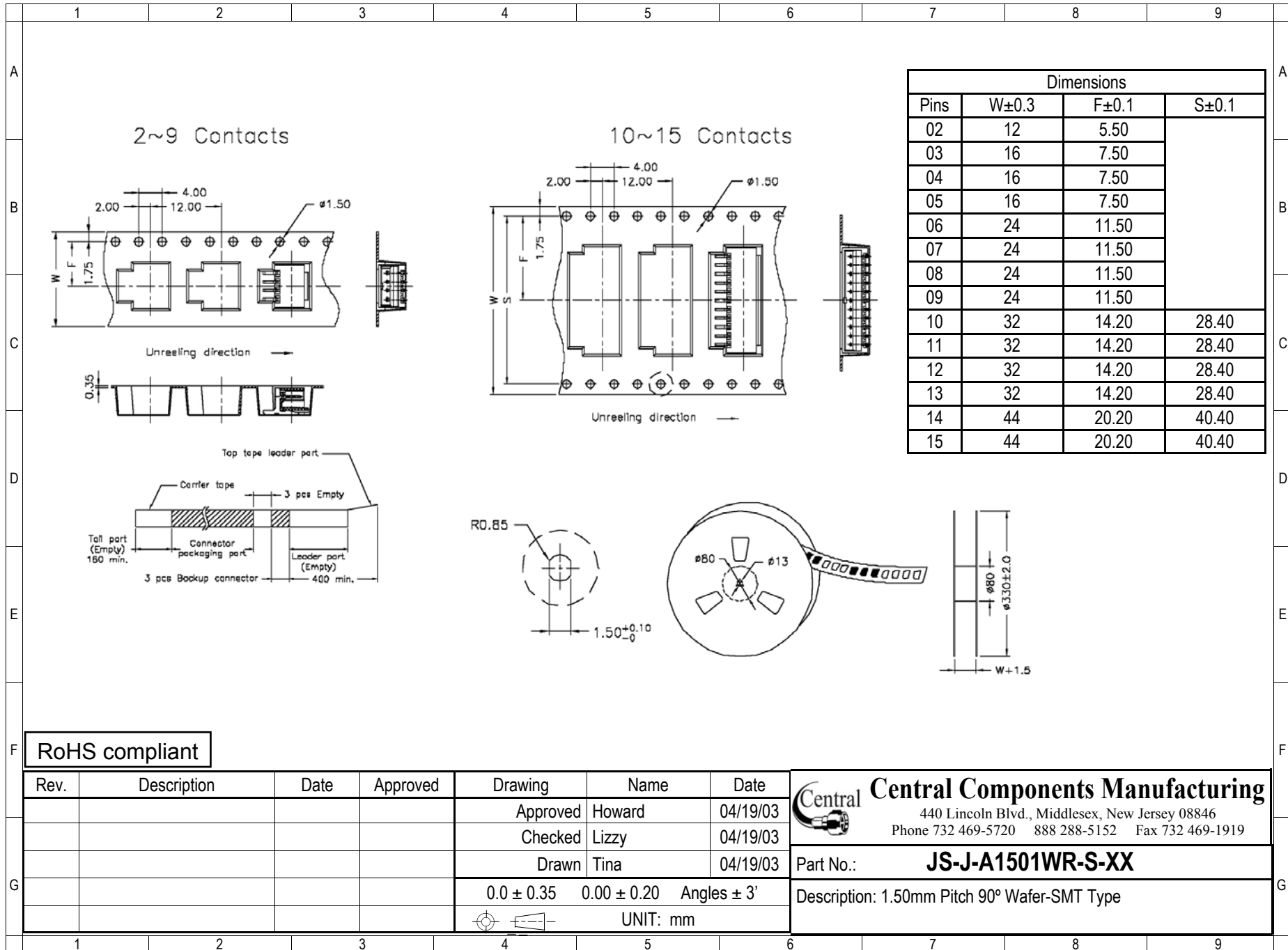
RoHS compliant

Rev.	Description	Date	Approved	Drawing	Name	Date
				Approved	Howard	04/19/03
				Checked	Lizzy	04/19/03
				Drawn	Tina	04/19/03
				0.0 ± 0.35	0.00 ± 0.20	Angles ± 3'
				UNIT: mm		

**Central Components Manufacturing**  
 440 Lincoln Blvd., Middlesex, New Jersey 08846  
 Phone 732 469-5720 888 288-5152 Fax 732 469-1919

Part No.: **JS-J-A1501WR-S-XX**

Description: 1.50mm Pitch 90° Wafer-SMT Type



Dimensions			
Pins	W±0.3	F±0.1	S±0.1
02	12	5.50	
03	16	7.50	
04	16	7.50	
05	16	7.50	
06	24	11.50	
07	24	11.50	
08	24	11.50	
09	24	11.50	
10	32	14.20	28.40
11	32	14.20	28.40
12	32	14.20	28.40
13	32	14.20	28.40
14	44	20.20	40.40
15	44	20.20	40.40

RoHS compliant

Rev.	Description	Date	Approved	Drawing	Name	Date
				Approved	Howard	04/19/03
				Checked	Lizzy	04/19/03
				Drawn	Tina	04/19/03
				0.0 ± 0.35	0.00 ± 0.20	Angles ± 3'
				UNIT: mm		


**Central Components Manufacturing**  
 440 Lincoln Blvd., Middlesex, New Jersey 08846  
 Phone 732 469-5720 888 288-5152 Fax 732 469-1919

Part No.: **JS-J-A1501WR-S-XX**  
 Description: 1.50mm Pitch 90° Wafer-SMT Type