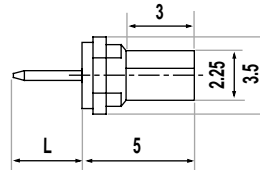
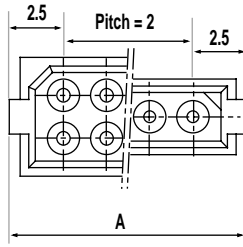
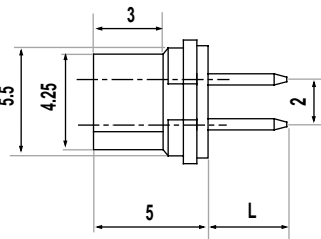
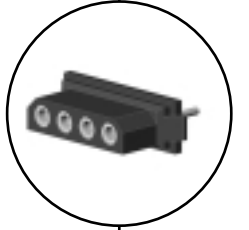
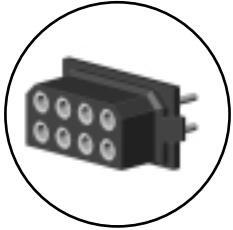


# Micro-connector CMM 100/200 series

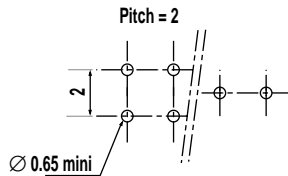
## FEMALE STRAIGHT PCB

202◆ XX

102◆ XX



L	Type ◆
3 mm	Y
4.5 mm	YL
0,5 mm	YC
6,7 mm	YM



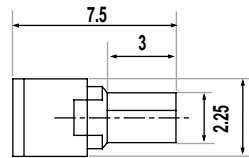
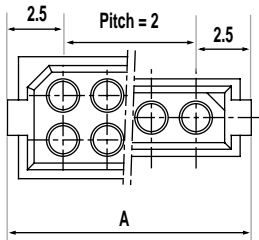
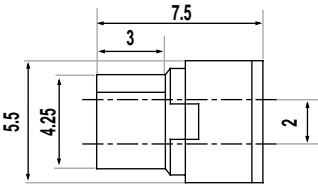
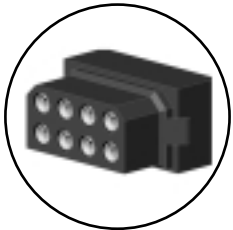
XX : Number of contacts  
◆ : Contact type (Y, YL, YC)

Dimensions in mm

## FEMALE CRIMP

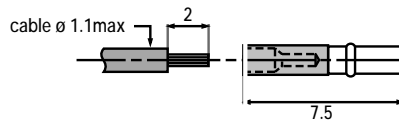
202◆ XX

102◆ XX



Wire size (AWG)	Type ◆
22	C
24 - 28	S

Contact can be ordered separately  
Ref : C12468 AWG 24-28  
Ref : C13064 AWG 22



Crimp contacts refer to page 20.

Dimensions in mm  
For availability  
please consult us.

Nber of contacts Single row	02	03	04	05	06	07	08	09	10	11	12	13	14	15	16	17	18	19	20	21	22	23	24	25
Nber of contacts Two rows	04	06	08	10	12	14	16	18	20	22	24	26	28	30	32	34	36	38	40	42	44	46	48	50
A	7,3	9,3	11,3	13,3	15,3	17,3	19,3	21,3	23,3	25,3	27,3	29,3	31,3	33,3	35,3	37,3	39,3	41,3	43,3	45,3	47,3	49,3	51,3	53,3