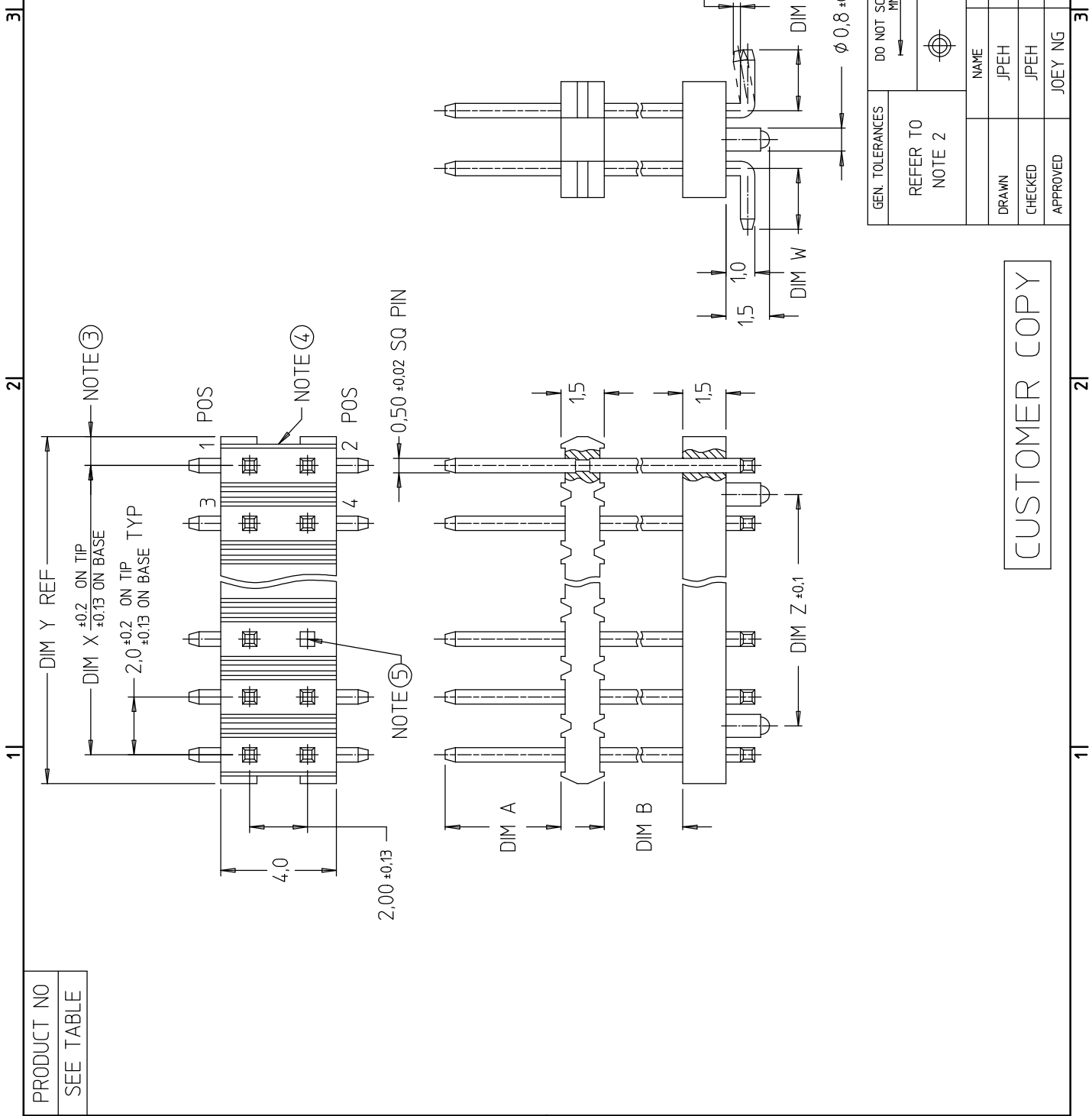


REV	DESCRIPTION	REVD BY	DATE
AA	ECR S80212	BS LOW	19AUG98
AB	ECR S80266	BS LOW	24NOV98
AC	ECR S90029	BS LOW	15MAR99
AD	ECR S00052	JPEH	27MAR00
AE	ECR S10078	JPEH	01JUN01



PRODUCT NO  
SEE TABLE


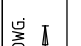
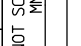
CUSTOMER COPY

GEN. TOLERANCES		DO NOT SCALE DWG.	
REFER TO	PM		
NOTE 2			
DESCRIPTION		MINITEK II R/R	
DRAWN		SMT STR HDR WITH LOCATOR	
CHECKED	DATE	PRODUCT NO.	92813
APPROVED	NAME	SCALE	SHT 1 OF 3
	JPEH		
	JPEH		
	JOEY NG		

PRODUCT NO	POS	DIM X	DIM Y	DIM Z	DIM A	DIM B	DIM W	POL. POS	PLATING	MAT'L	11		21		31		REV
											11	21	31	AA	AB	AC	
-001	2X19	36	38	34	3,4	5,4	2,1	-	0,38 um MIN GXT	NOTE 1							
-002	2X8	14	16	12	3,4	5,4	2,1	-	0,38 um MIN GXT	NOTE 1							
-003	2X15	28	30	26	3,5	6,5	2,4	-	0,38 um MIN GXT	NOTE 1							
-004	2X7	12	14	10	3,4	2,0	2,0	-	0,38 um MIN Au	NOTE 1							
-005	2X8	14	16	12	3,4	2,0	2,0	-	0,38 um MIN Au	NOTE 1							
-006	2X12	22	24	20	3,6	5,5	2,1	-	0,38 um MIN GXT	NOTE 1							
-007	2X20	38	40	36	4,0	9,5	2,1	-	0,38 um MIN GXT	NOTE 1							
-008	2X4	6	8	4	5,5	2,0	2,1	-	0,38 um MIN Au	NOTE 1							
-009	2X8	14	16	12	4,7	2,0	2,0	-	0,38 um MIN GXT	NOTE 1							
-010	2X12	22	24	20	4,0	5,5	2,0	-	0,38 um MIN GXT	NOTE 1							
-011	2X10	18	20	16	4,0	5,5	2,0	-	0,38 um MIN GXT	NOTE 1							
-012	2X16	30	32	28	4,0	2,0	2,0	-	0,38 um MIN GXT	NOTE 1							
-013	2X5	8	10	6	3,5	0	2,0	-	0,76 um MIN GXT	NOTE 1							
-014	2X4	6	8	4	4,0	5,5	2,0	-	0,38 um MIN GXT	NOTE 1							
-015	2X15	28	30	26	4,0	5,5	2,0	-	0,38 um MIN GXT	NOTE 1							
-016	2X13	24	26	22	4,0	4,0	2,0	-	0,38 um MIN GXT	NOTE 1							
-017	2X18	34	36	32	4,0	4,0	2,0	-	0,38 um MIN GXT	NOTE 1							
-018	2X6	10	12	8	2,8	1,0	2,0	-	0,38 um MIN GXT	NOTE 1							
-019	2X15	28	30	26	6,0	4,0	2,0	-	0,38 um MIN GXT	NOTE 1							
-020	2X15	28	30	26	4,0	6,0	1,8	-	0,38 um MIN GXT	NOTE 1							
-021	2X13	24	26	22	4,0	2,0	1,8	-	0,38 um MIN GXT	NOTE 1							
-022	2X14	26	28	24	2,0	6,5	2,4	-	0,38 um MIN GXT	NOTE 1							
-023	2X25	48	50	46	4,0	5,4	2,1	-	0,38 um MIN GXT	NOTE 1							
-024	2X15	28	30	26	3,4	2,0	2,0	-	0,38 um MIN Au	NOTE 1							
-025	2X3	4	6	2	4,0	2,0	2,0	-	0,76 um MIN Au	NOTE 1							
-026	2X13	24	26	22	4,0	4,0	2,1	-	0,76 um MIN GXT	NOTE 1							
-027	2X4	6	8	4	4,65	8,7	2,0	-	0,38 um MIN Au	NOTE 1							
-028	2X5	8	10	6	4,0	2,0	2,0	-	0,76 um MIN GXT	NOTE 1							

11 21 31 4

AA AB AC AD AE

 DESCRIPTION MINITEK II R/R SMT STR HDR WITH LOCATOR PRODUCT NO. 92813 SCALE SHT 2 OF 3												DO NOT SCALE DWG.	
												 	
REFER TO NOTE 2												NAME DATE	
DRAWN JPEH 01JUN01												JPEH 06JUN01	
APPROVED JOEY NG 06JUN01												06JUN01	

CUSTOMER COPY

1|

2|

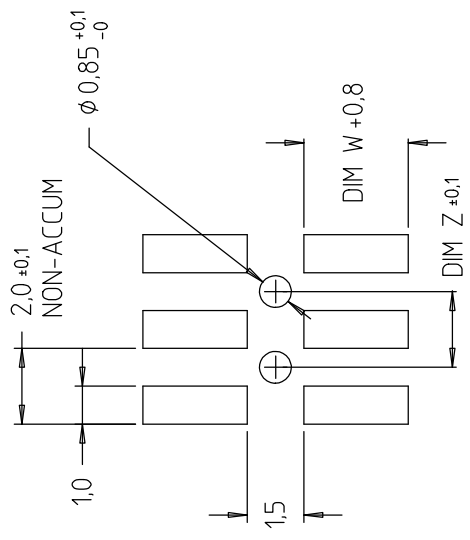
3|

4

PRODUCT NO  
SEE TABLE

NOTES

- ① MATERIAL  
BODY : GLASS FILLED PCT UL 94V-0 NATURAL (BEIGE)  
PIN : PHOSPHOR BRONZE
- 2 TOLERANCE UNLESS OTHERWISE NOTED ±0,25
- ③ DIM 1,0 ±0,15 FOR MOLDED SIDE(S) ONLY  
IF SIDE(S) ARE BROKEN DIM 1,5 MAX APPLIES
- ④ RECESS APPLIES TO MOLDED SIDE(S) ONLY
- ⑤ POLARISATION BY OMISSION OF PIN. POSITION REFER TO TABLE.
- 6 P/N 92813-XXXT TO BE PACKED IN TUBE.
- 7 P/N 92813-011TC, 014TC, 023TC & 024TC TO BE PACKED IN TUBE WITH PICK-UP CAP INSTALLED IN THE CENTRE OF THE PRODUCT. SEE FIG 1.
- 8 P/N 92813-024TR TO BE PACKED IN TAPE & REEL WITH PICK-UP CAP INSTALLED IN THE CENTRE OF THE PRODUCT. SEE FIG 1.



RECOMMENDED PAD LAYOUT

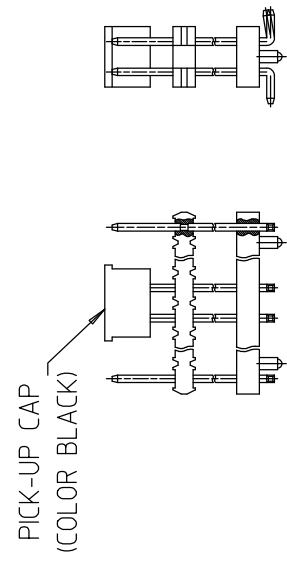


FIG. 1

A

A

B

B

CUSTOMER COPY

GEN. TOLERANCES		DO NOT SCALE DWG.			
REFER TO NOTE 2					
DRAWN	JPEH	NAME	DATE	DESCRIPTION	
CHECKED	JPEH	JPEH	01JUN01	MINITEK II R/R	
APPROVED	JOEY NG	JPEH	06JUN01	SMT STR HDR WITH LOCATOR	
			PRODUCT NO.	92813	
			SCALE	SHT 3 OF 3	



1|

2|

3|

4